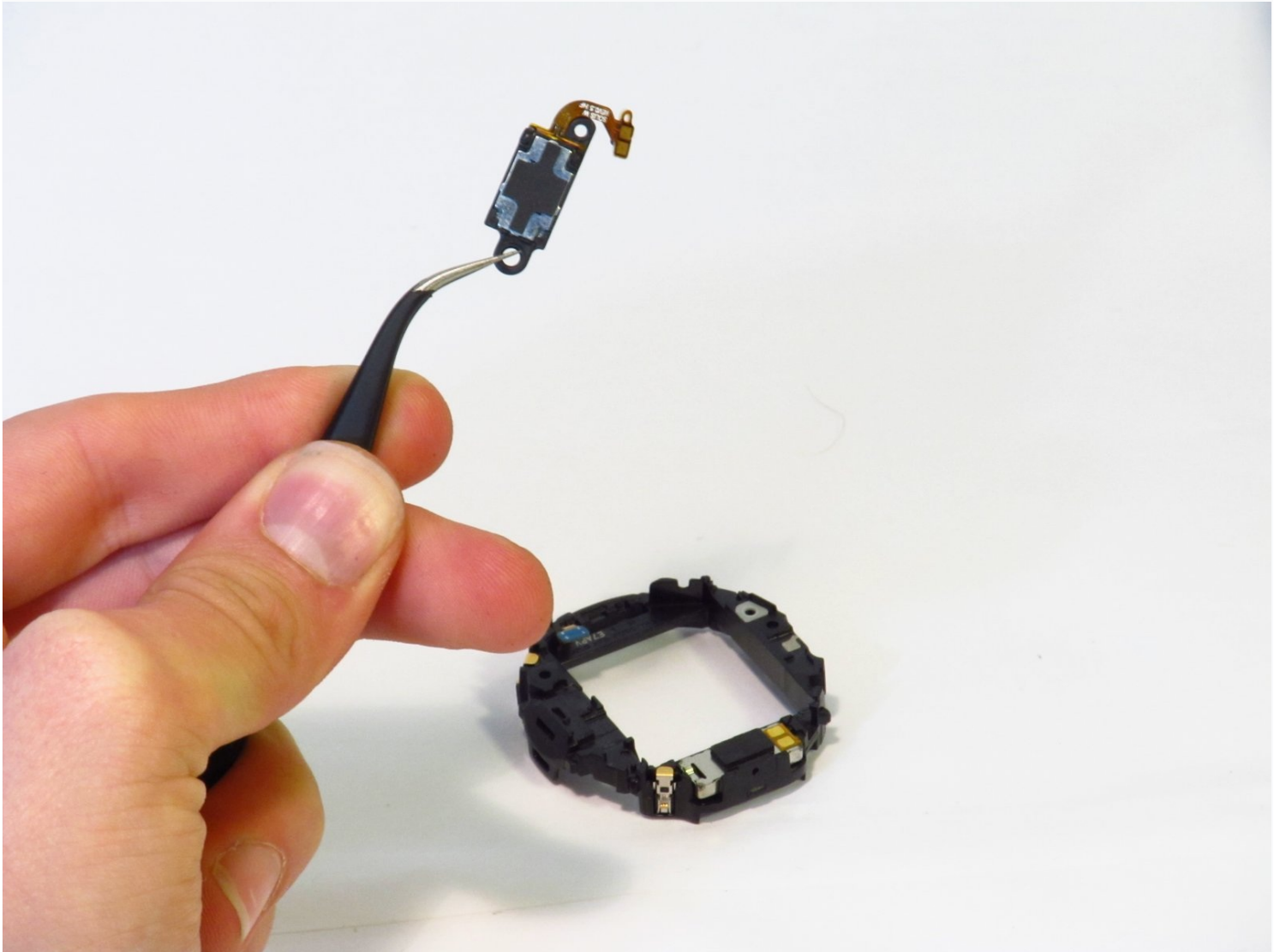




Samsung Gear S3 Frontier Speaker Replacement

If sound from your speaker is muffled or not...

Written By: Jimmy Algeo



INTRODUCTION

If sound from your speaker is muffled or not working at all, use this guide to replace it.

TOOLS:

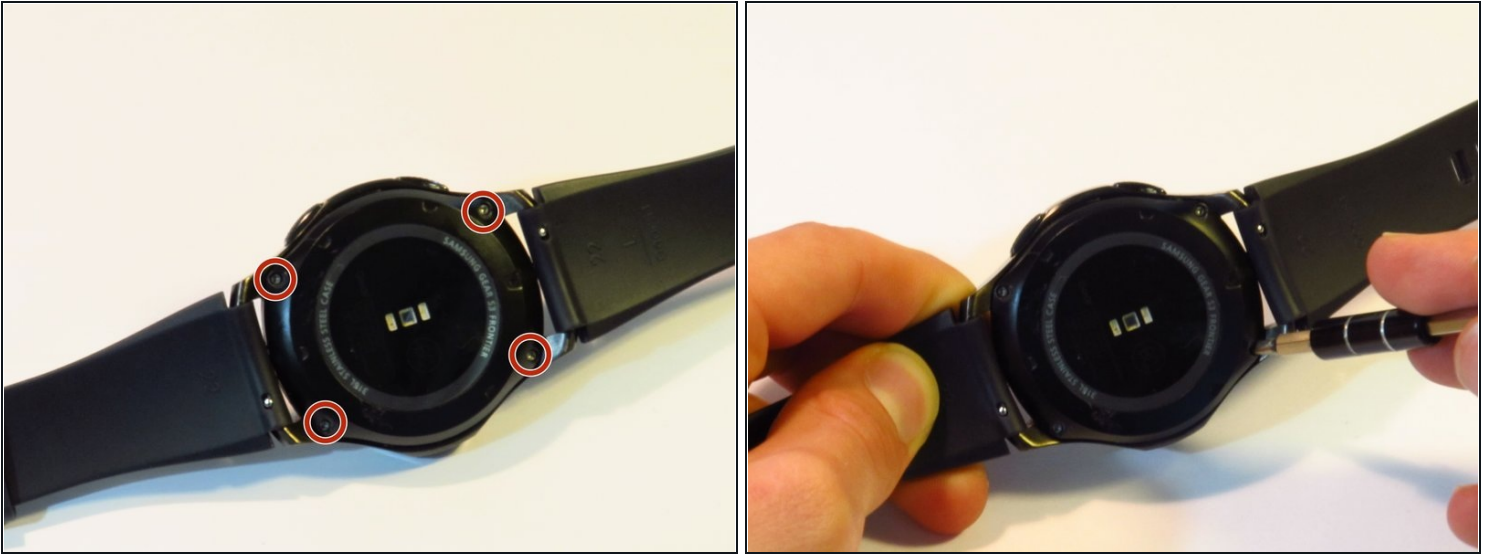
JIS #00 Screwdriver (1)
Spudger (1)
Metal Spudger (1)
Tri-point Y00 Screwdriver (1)
Tweezers (1)
JIS #000 Screwdriver (1)

Step 1 — Back Cover



- Place the watch screen-down so that its back cover is showing.

Step 2



- Remove the four 4.2mm screws with a Y00 screwdriver.

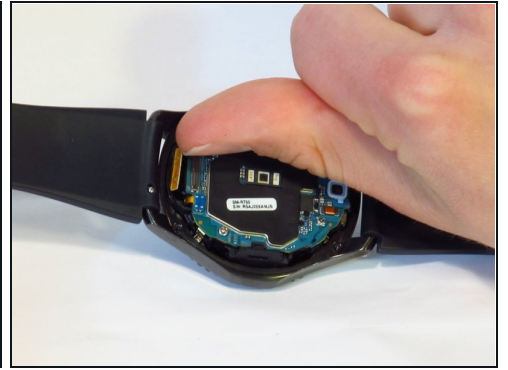
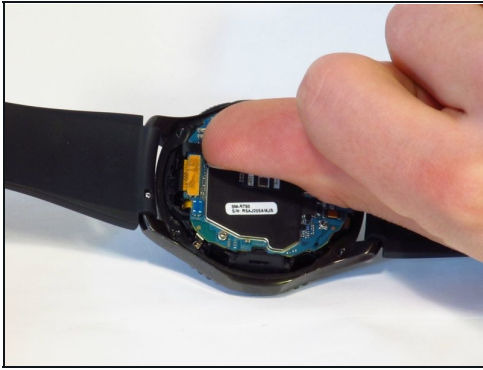
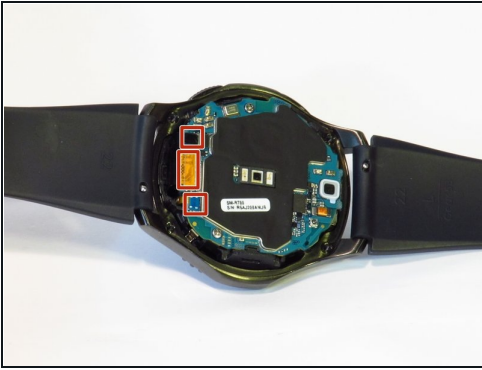
Step 3



⚠ This step will ruin the water-proof seal.

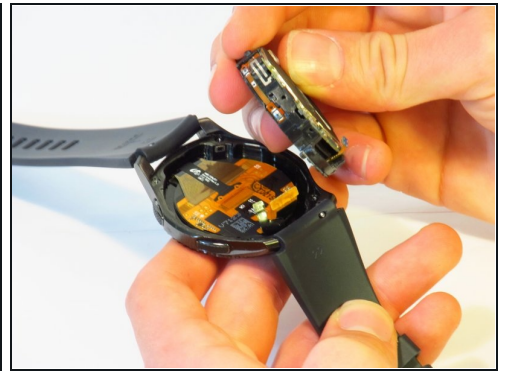
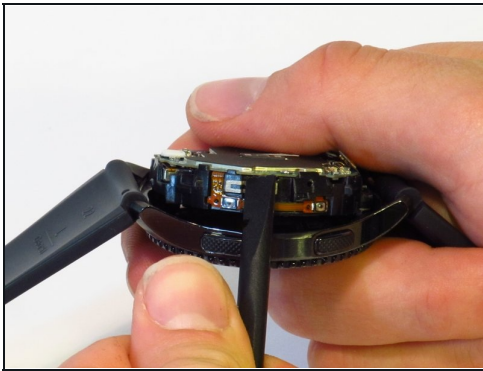
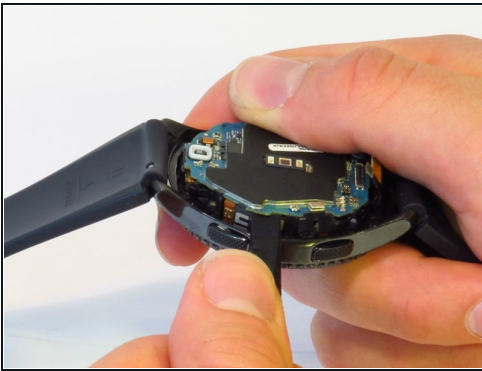
- Wedge the metal spudger in between the back cover and the frame along the seam.
 - Use force to pry the back cover away from the main watch frame.
- ⓘ This step requires a lot of force. You can use a Jimmy in place of a metal spudger to make the process easier.

Step 4 — Front Screen Assembly



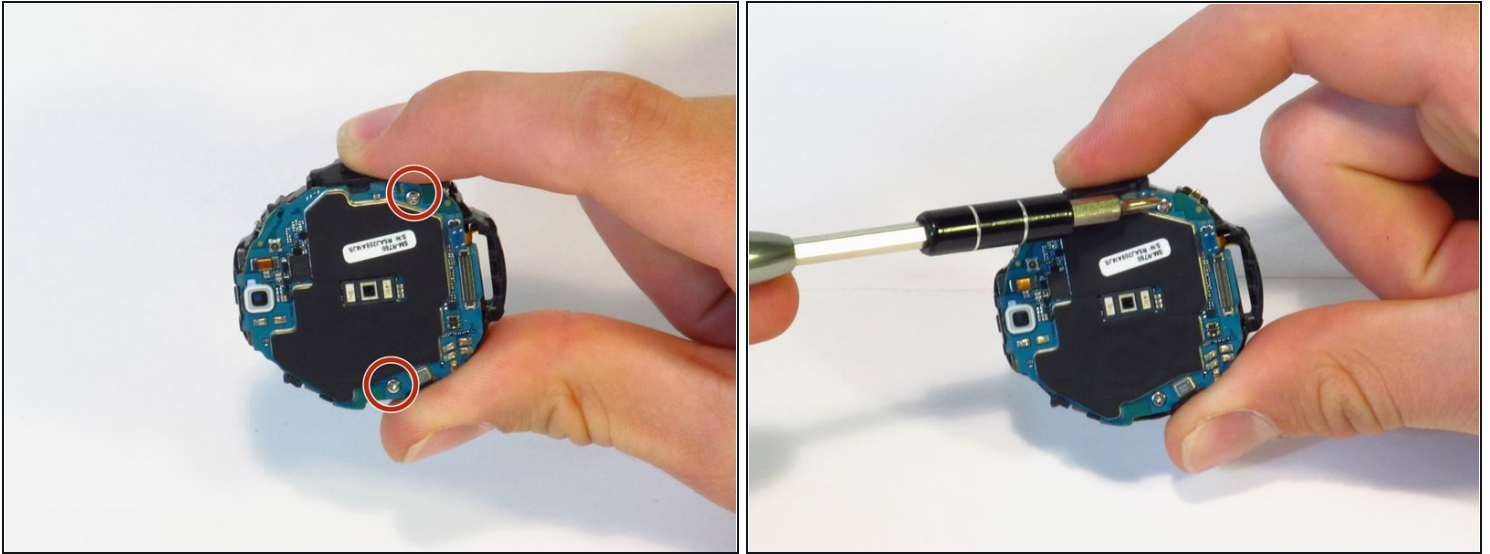
- Detach the three connectors on the motherboard using your fingernail.
- ① The connectors are easy to pop off. Minimal force is necessary.

Step 5



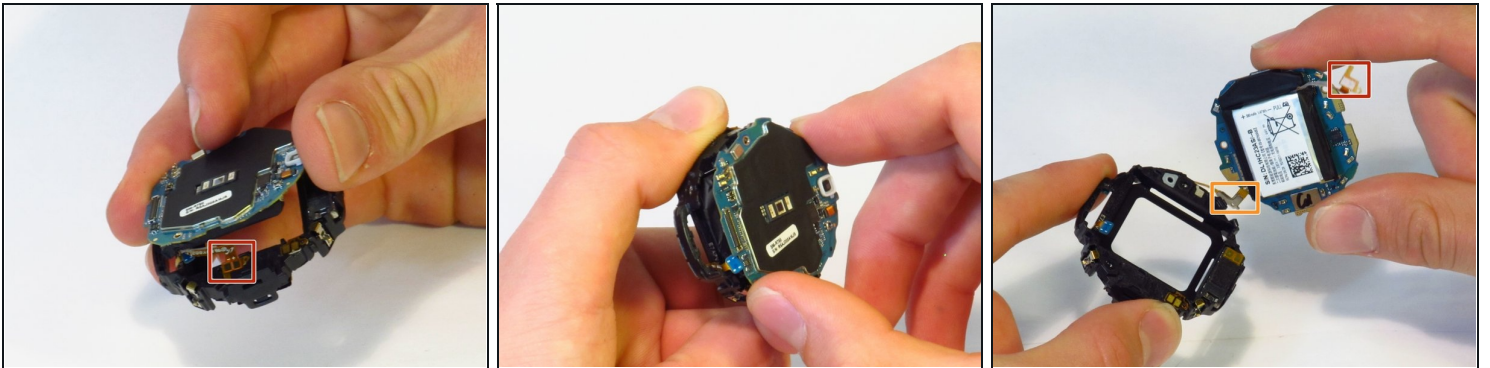
- Separate the motherboard and front screen assembly using a spudger.

Step 6 — Battery



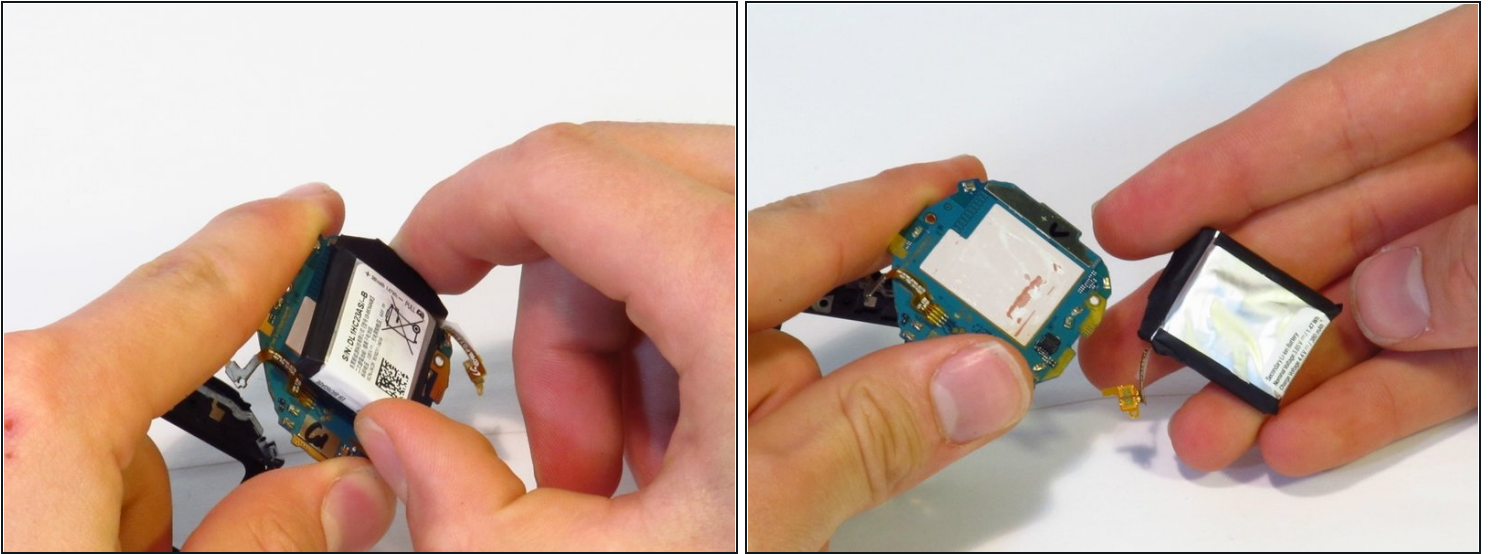
- Using a JIS #00 screwdriver, remove the two 4.5 mm screws.

Step 7



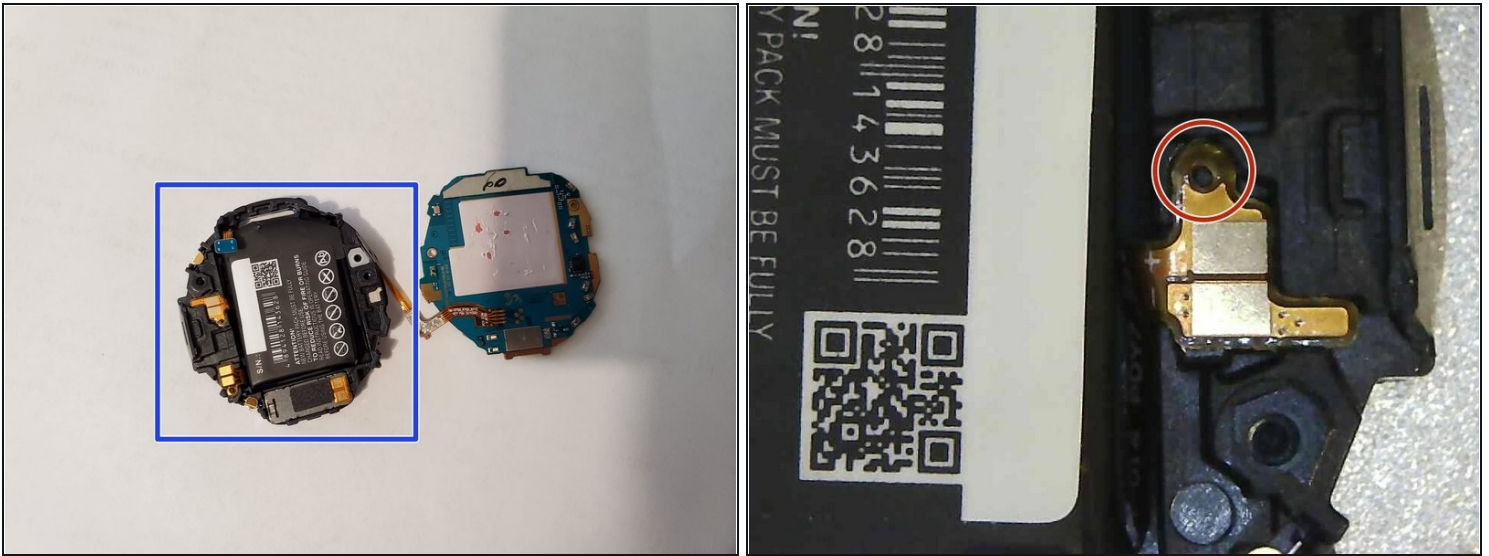
- Disconnect the battery ribbon cable from bracket.
 - ⚠ Be careful with the battery ribbon cable and motherboard cable (located on the side opposite the battery cable, highlighted with the orange box), as they are very easy to break (ours did when disassembling).
- ⓘ Note how the end of the ribbon cable seats in the plastic chassis. Look for the plastic pin on the chassis when re-seating during re-assembly.
- Separate the chassis from the motherboard.

Step 8



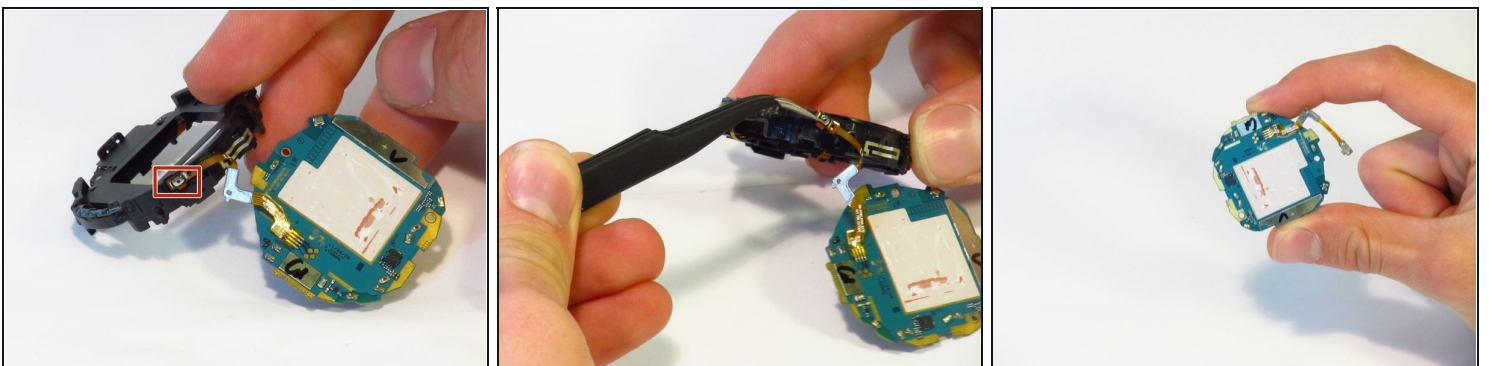
- Separate the battery from the motherboard.
 - ① The battery and the motherboard are secured with adhesive; some force is needed.
- ⚠ Lithium-ion batteries are potentially dangerous. Handle with extreme care and do not puncture the battery.

Step 9



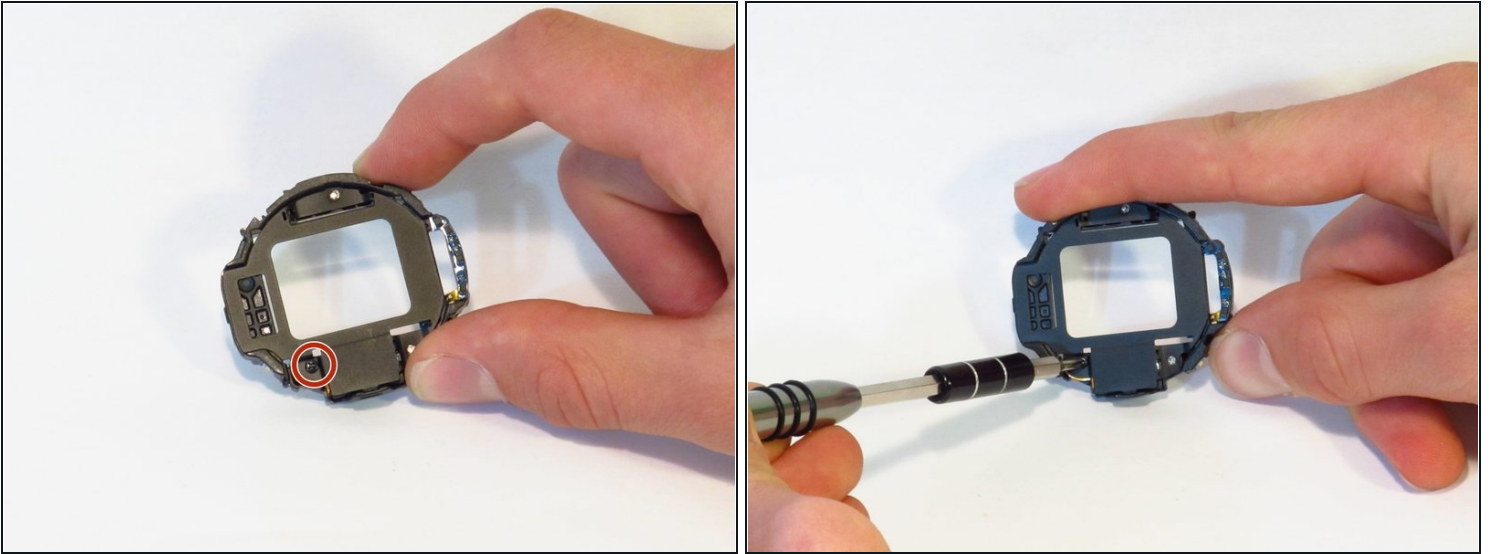
- When reassembling, place the battery into the plastic assembly first. Don't stick it to the adhesive first. This way, it's easy to position the battery cable.
- When securing the battery cable, make sure the hole that the peg goes through is round. The hole on your replacement battery's cable could be malformed. You may want to widen the hole before securing the cable.
- To widen the hole, use the Pro Tech Toolkit's SIM tool, a small paperclip or similar fine-tipped tool. The tool can also be used to gently press the battery cable into the correct position. Do this carefully to avoid damage.
- Follow steps 8-1 in reverse order to reassemble.

Step 10 — Motherboard



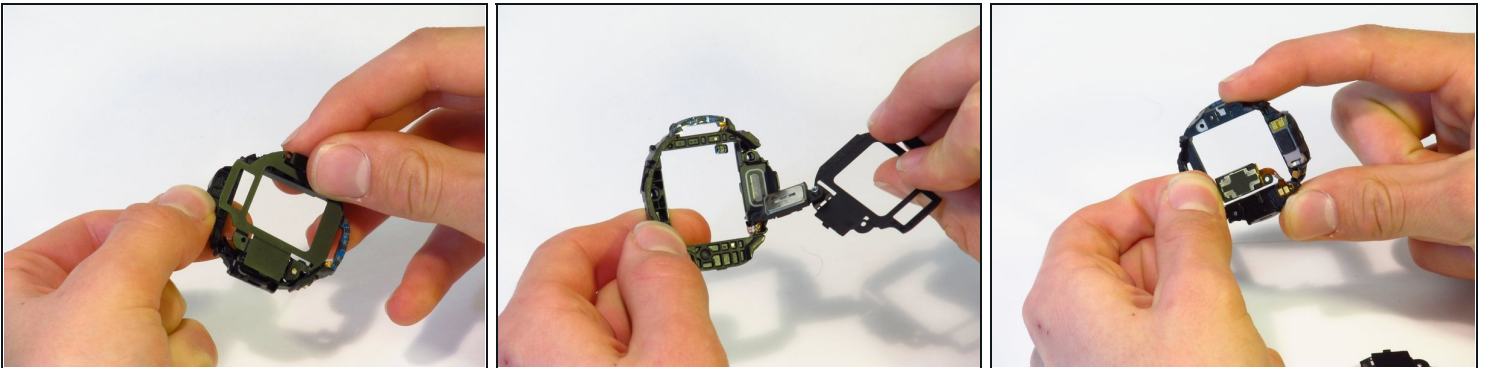
- Remove the battery's cable from the chassis using [tweezers](#).

Step 11 — Speaker



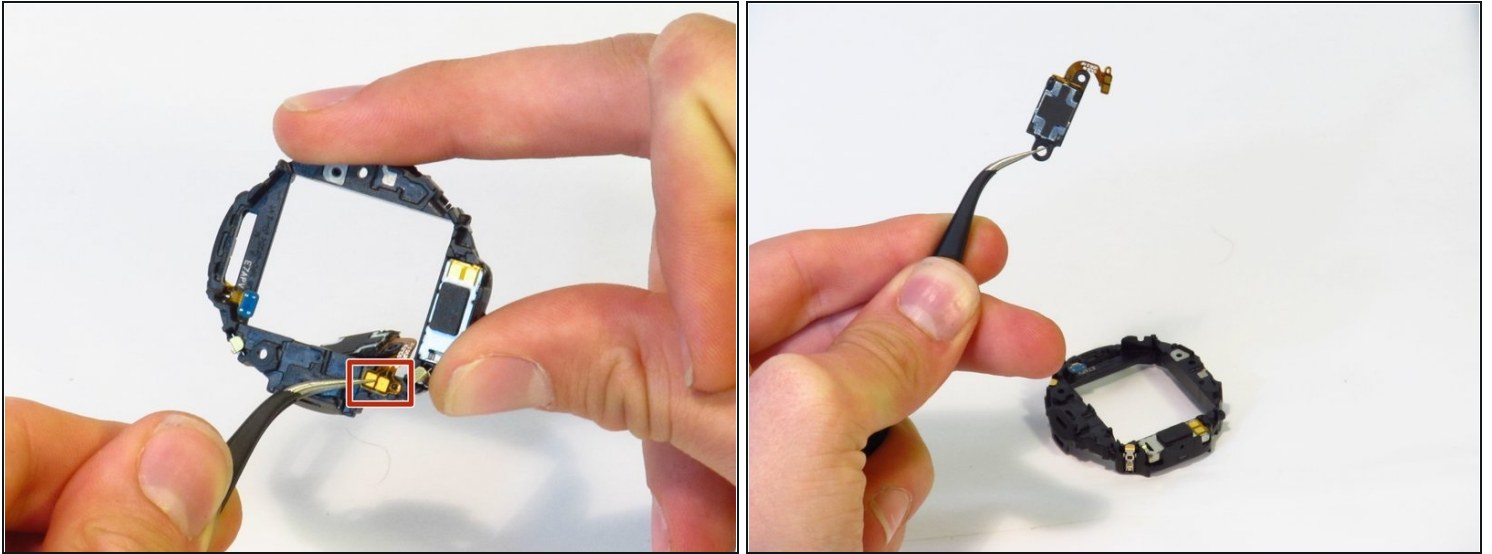
- Remove the single 3.9mm screw with a JIS #000 screwdriver.

Step 12



- Separate the two parts of the chassis.
 - ① The speaker is located on the bulkier half of the chassis (see third image).

Step 13



- Remove the connection from the chassis with [tweezers](#).

⚠ Attempting to remove the connection by grabbing the speaker itself may result in damage to the speaker and its connection.

- Separate the speaker from the chassis.

To reassemble your device, follow these instructions in reverse order.