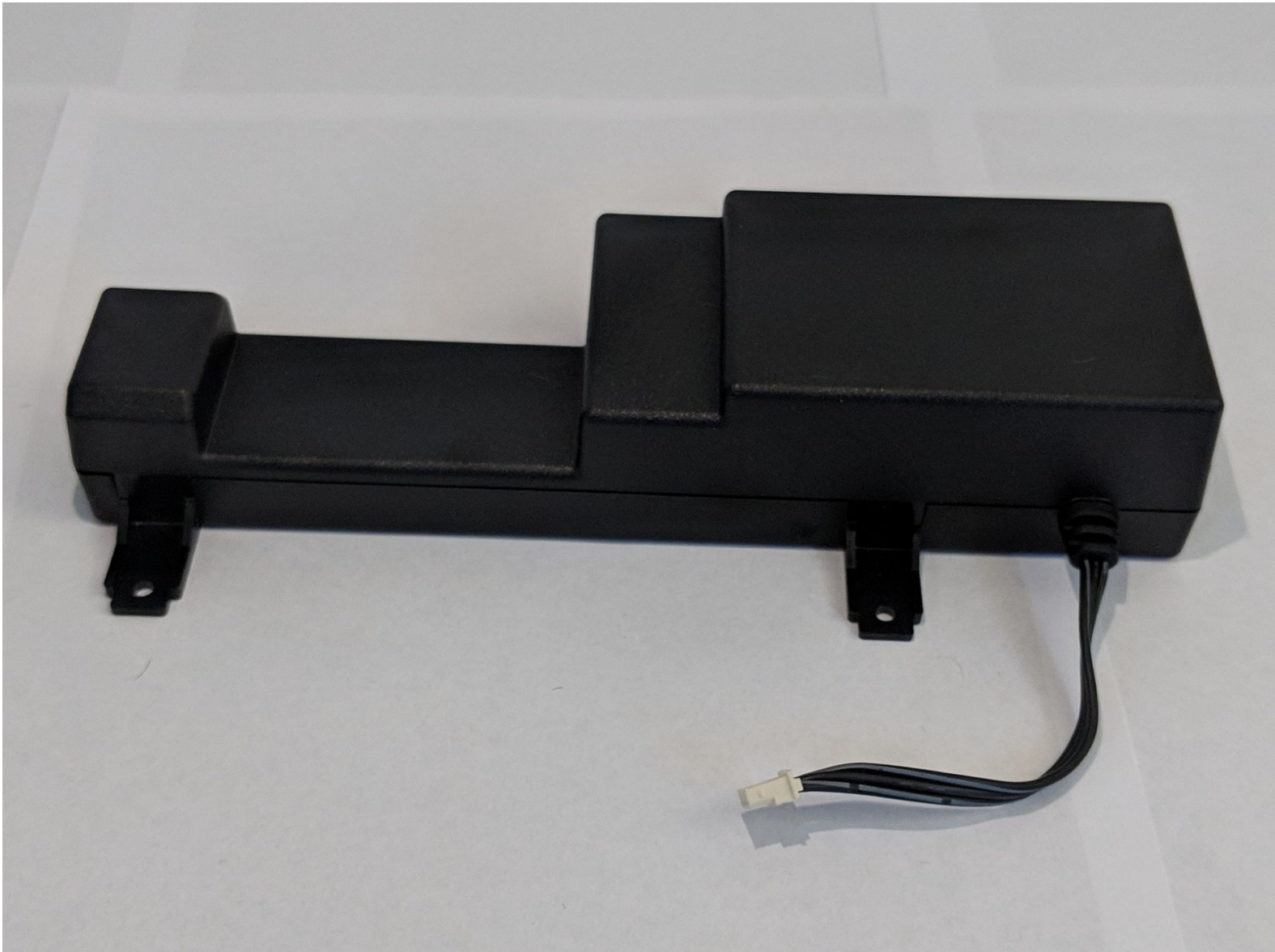




HP Officejet Pro 8625 Power Supply Replacement

Replacing the power supply on your HP Officejet Pro 8625 printer if it won't power on.

Written By: Cole Andrews



INTRODUCTION

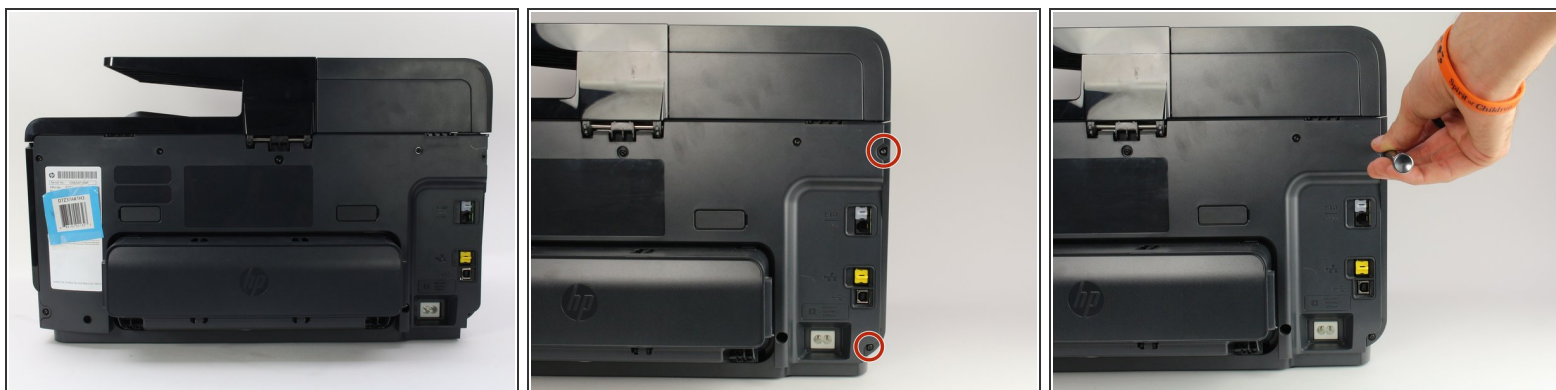
If your printer will no longer power on and you have determined the power supply is the problem, use this guide to replace it. For this step you will need the T9 Torx screwdriver to remove the two 9.6 mm screws in the replacement.



TOOLS:

- [T9 Torx Screwdriver](#) (1)
-

Step 1 — Left Side Panel



- Remove the two 11.6 mm T9 screws from the right side of the back of the printer.

Step 2



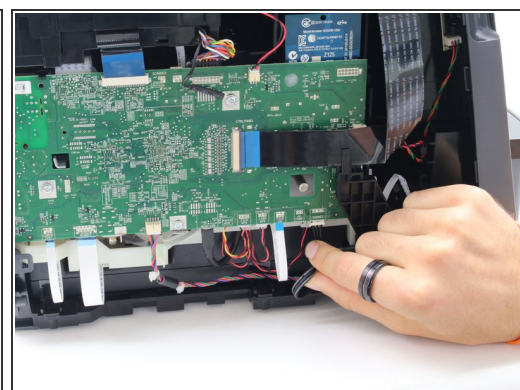
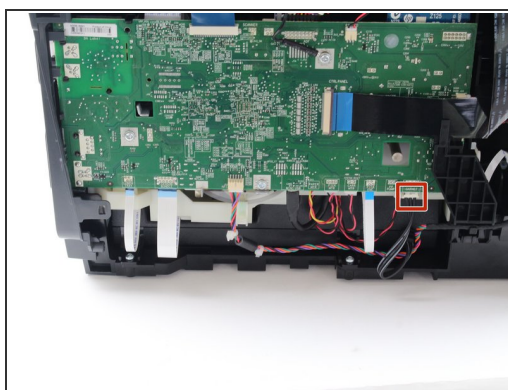
- Pull down the front panel to expose the screws on the front.
- Remove the one 11.6 mm T9 screw on the left side of the front face.

Step 3



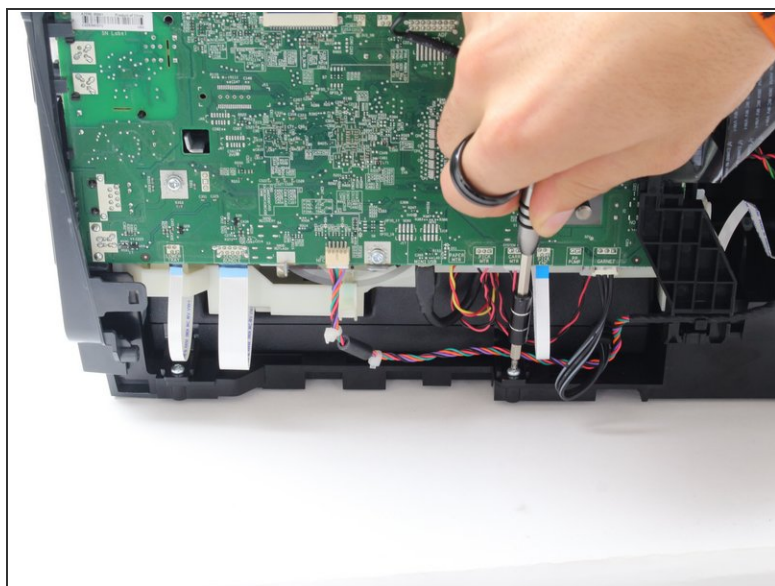
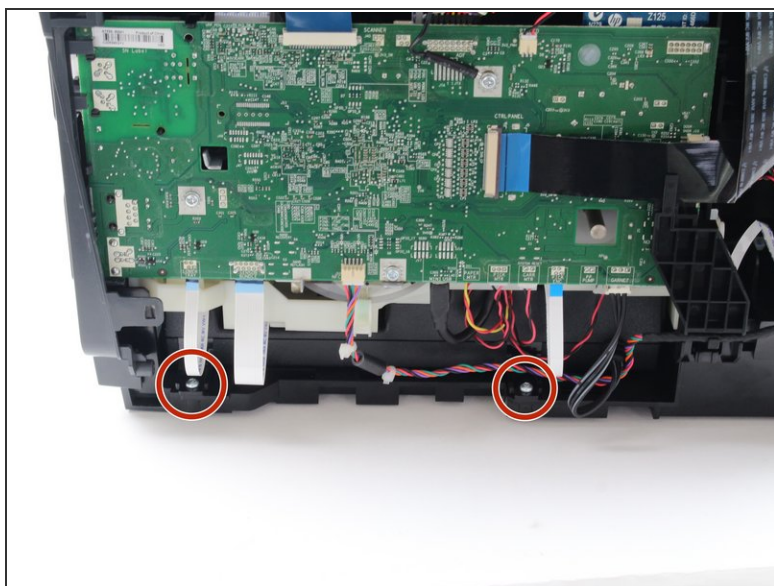
- Remove the side panel by pushing down and towards the back.
- ⓘ This step may be easier if the printer is laid on its side with the left side panel facing up.

Step 4 — Power Supply



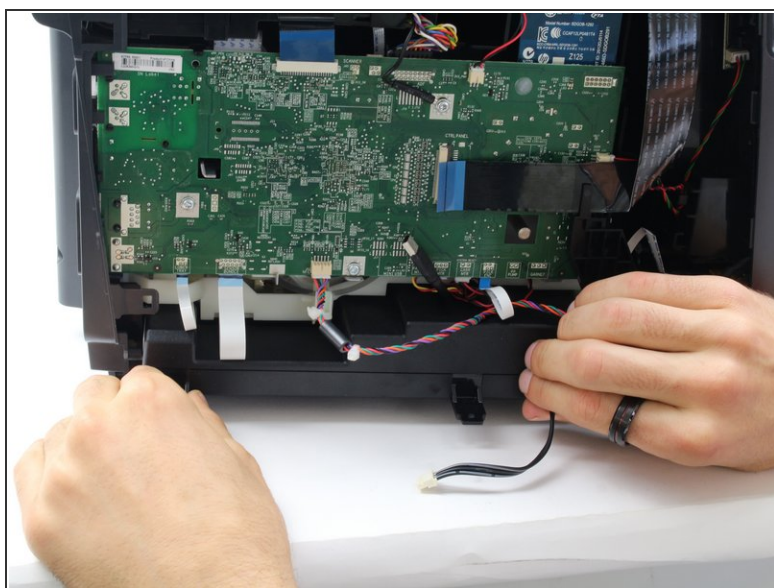
- Remove the the black cable from the bottom of the motherboard by carefully pulling down on the connection.

Step 5



- Remove the two 9.3 mm T9 screws that attach the power supply to the bottom of the printer.

Step 6



- Slide the power supply out of the printer by pulling towards you.

i Be careful of the wires coming from the motherboard.

To reassemble your device, follow these instructions in reverse order.