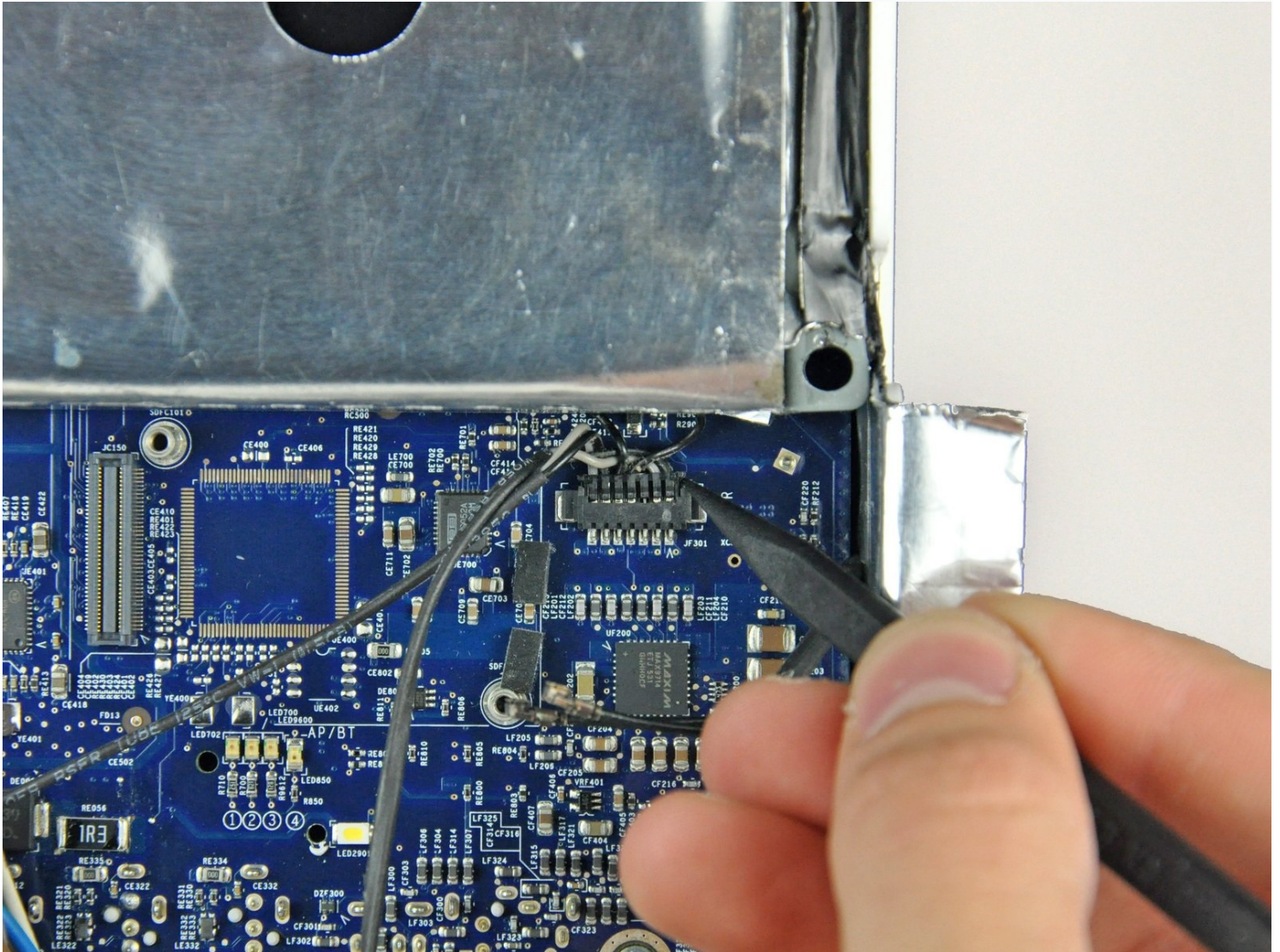




# iMac G5 20" Model A1145 Speakers Replacement

Is your iMac always mute? Replace the speakers.

Written By: Andrew Bookholt



# INTRODUCTION

Is your iMac always mute? Replace the speakers.

## TOOLS:

Phillips #00 Screwdriver (1)

Phillips #1 Screwdriver (1)

Plastic Cards (1)

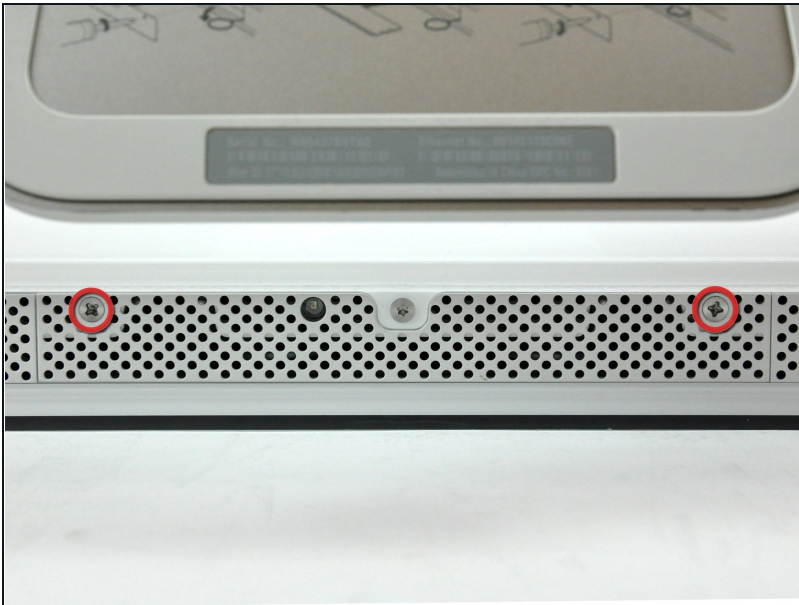
Spudger (1)

TR10 Torx Security Screwdriver (1)

T6 Torx Screwdriver (1)

TR8 Torx Security Screwdriver (1)

## Step 1 — Access Door

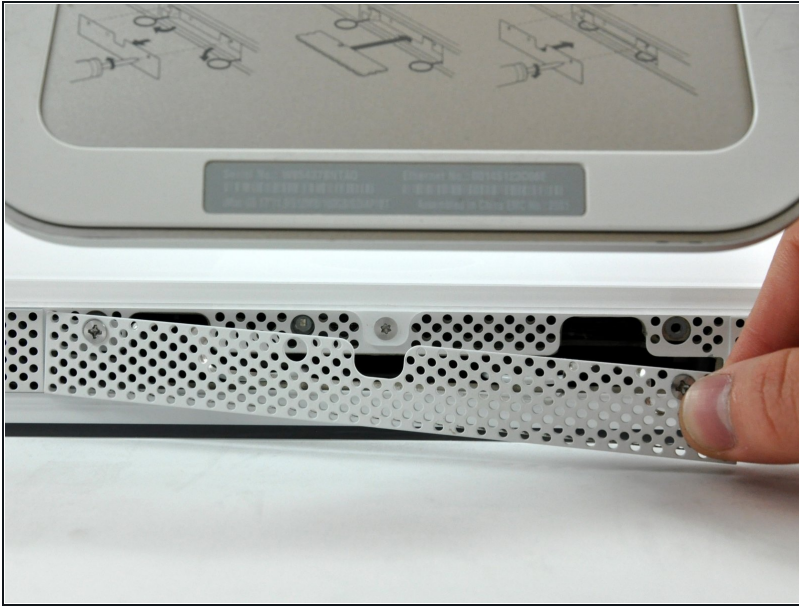


- Orient the iMac face-side down on a table with the bottom edge facing yourself.
- Remove the two Phillips screws securing the access door to the bottom grille of your iMac.
- ⓘ The screws are captive in the access door.

**⚠ Before beginning the repair, unplug the computer and press and hold the power switch for 20-30 seconds, to discharge internal capacitors.**



## Step 2



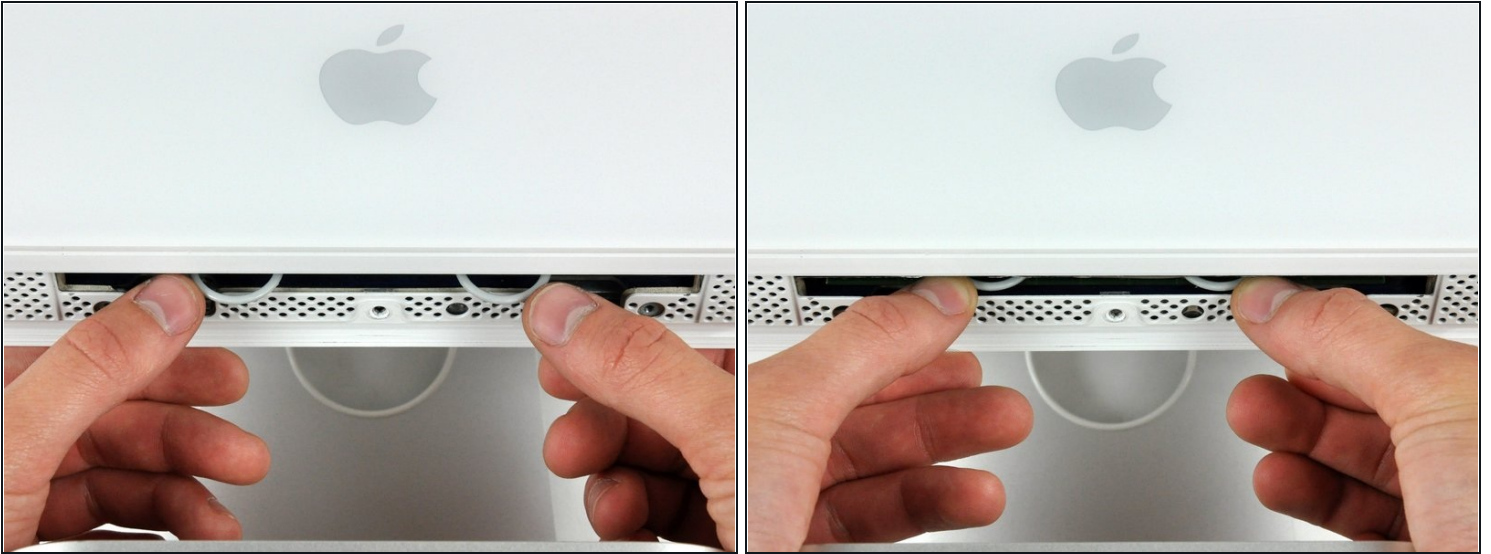
- Remove the access door.

## Step 3 — Front Bezel



- Remove the three T8 Torx screws securing the front bezel to the rear case along the lower edge of the iMac.

## Step 4



- Turn the computer over.
- Use your thumbs to press both RAM arms in past the front bezel for enough clearance to lift it off the rear case.

## Step 5



- While holding the RAM arms in with your thumbs, lift the lower edge of the front bezel enough to clear the rear case.

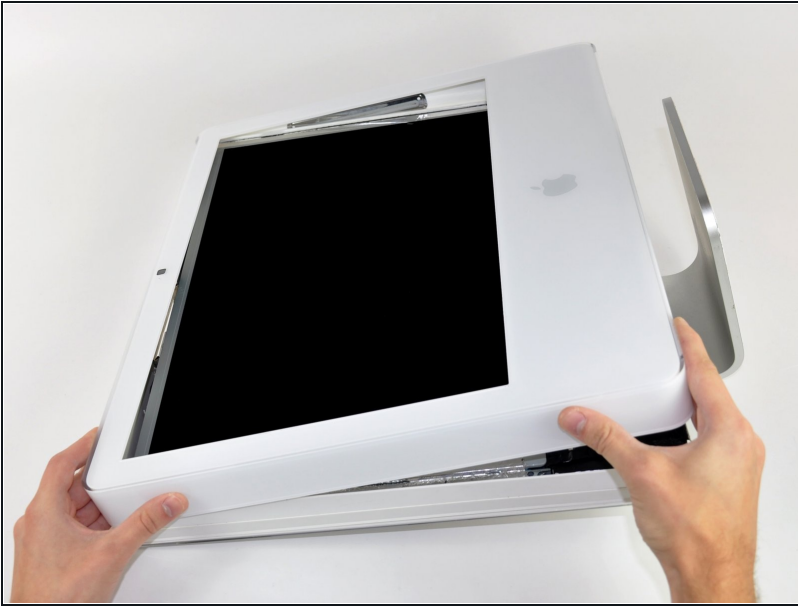


## Step 6



- ① Re-orient your iMac so it sits upright on the stand.
- Insert a [plastic card](#) up into the corner of the air vent slot near the top of the rear case.
- Push the card toward the top of the iMac to release the front bezel latch.
- Pull the front bezel away from the rear case.
- Repeat this process for the other side of the front bezel.
- ① It may be necessary to apply several layers of duct tape to the top of the access card to aid in releasing the latches.
- If the bezel refuses to release, try pressing the lower edge back onto the rear case and repeat this opening process.
- ① Alternatively, you can use a strong magnet by holding it to the front top left/right corner of the display. You will hear a snapping sound when the hatch is released.

## Step 7



- Lay your iMac stand-side down on a table.
- Lift the front bezel from its lower edge and rotate it away from the rest of your iMac, minding the RAM arms that may get caught.
- Lay the front bezel above the rest of the iMac.

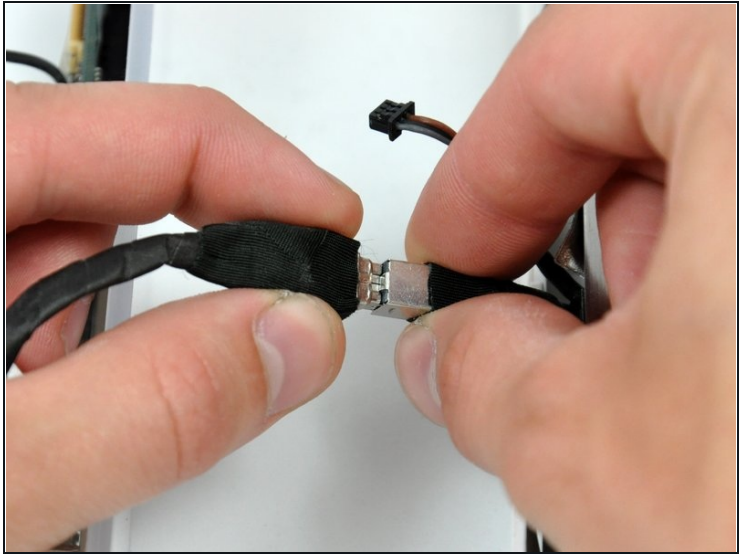
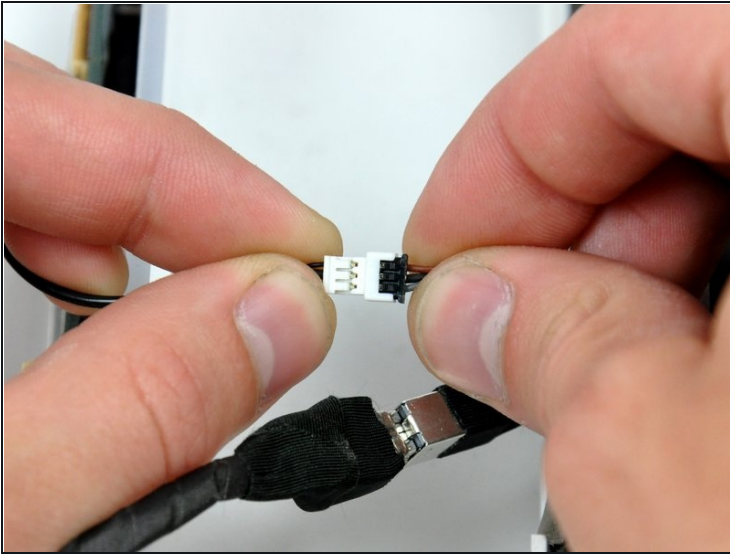
## Step 8



- If necessary, remove the piece of kapton tape wrapped around the microphone and camera connectors.

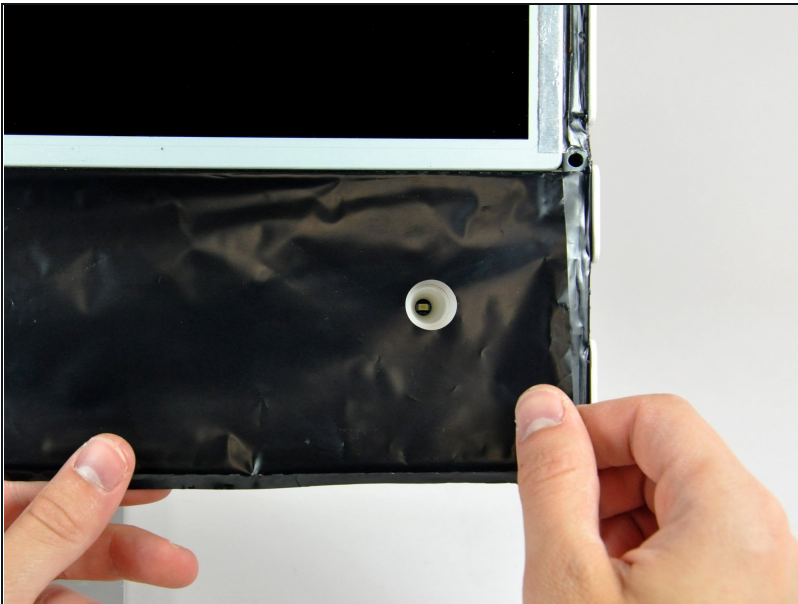


## Step 9



- Disconnect both the camera and microphone cables.

## Step 10 — Lower EMI Shield



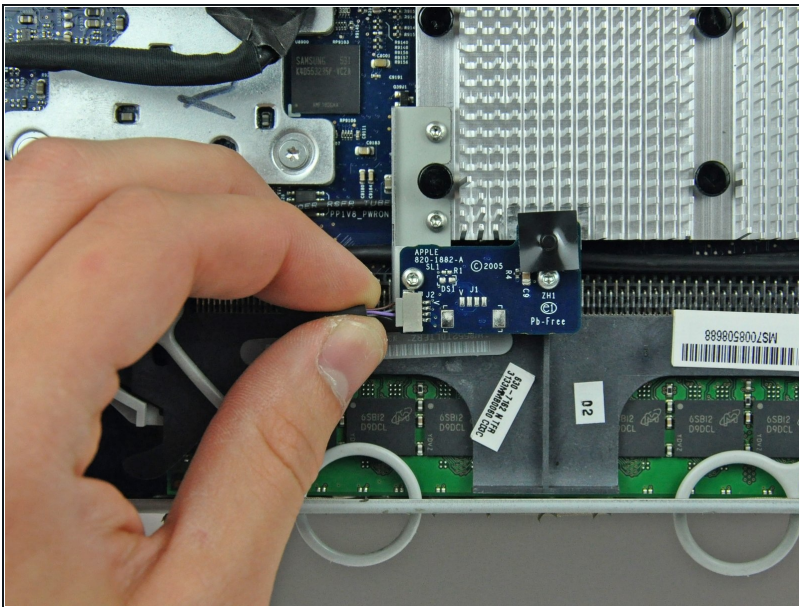
- Peel the lower EMI shield off the lower edge of the iMac and off the two vertical 4" sections on either side of the iMac.
- ⓘ It is not necessary to peel the lower EMI shield off the display.

## Step 11



- Tape the lower EMI shield up against the face of the display to keep it out of the way while you work.

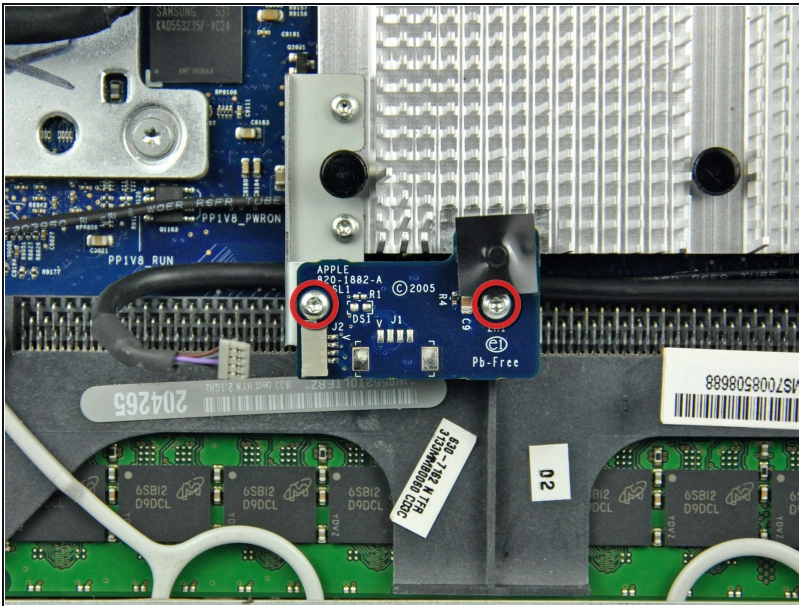
## Step 12 — IR Board



- Disconnect the IR board cable by pulling its connector toward the left edge of your iMac.



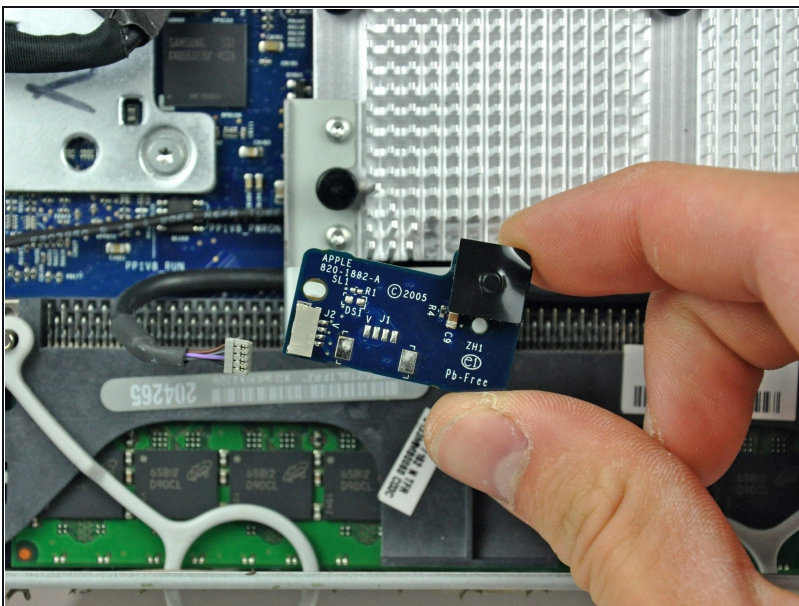
## Step 13



- Remove the two T6 Torx screws securing the IR board to its metal bracket.

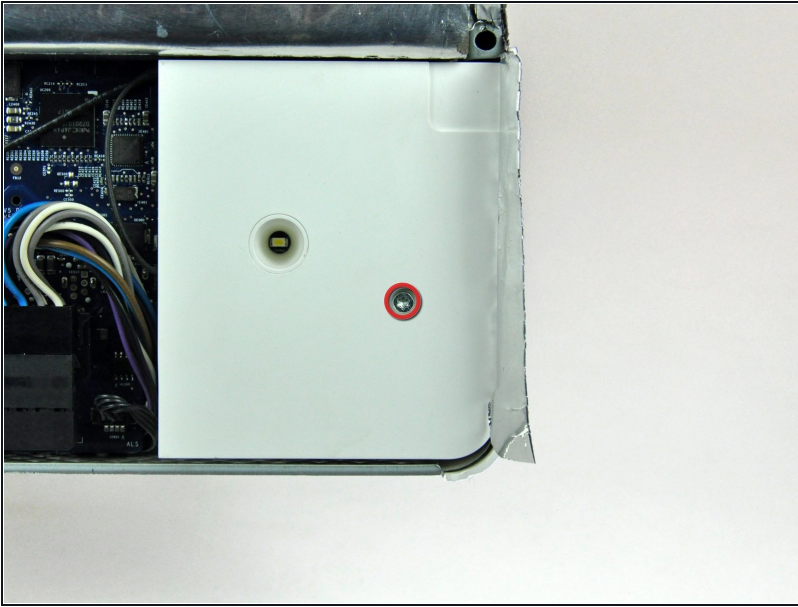
⚠ Hold the IR board as you remove the last screw, as it may fall.

## Step 14



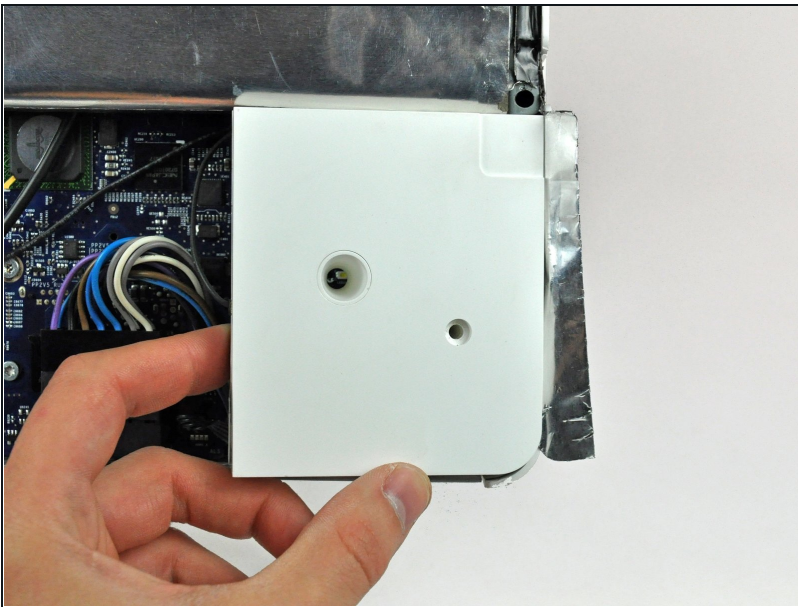
- Remove the IR board from your iMac.

## Step 15 — AirPort/Bluetooth Board



- Remove the single T10 Torx screw securing the right speaker to the rear case.

## Step 16



- Lift the right speaker out of the rear case.
- ⓘ The cable between the speaker and its connector is short, so either hold the speaker or allow it to hang from the iMac for the next few steps.

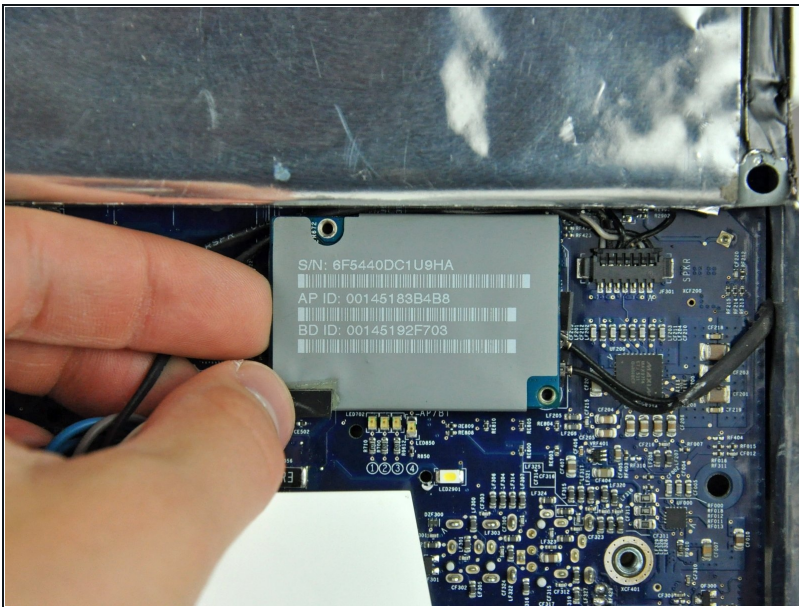


## Step 17



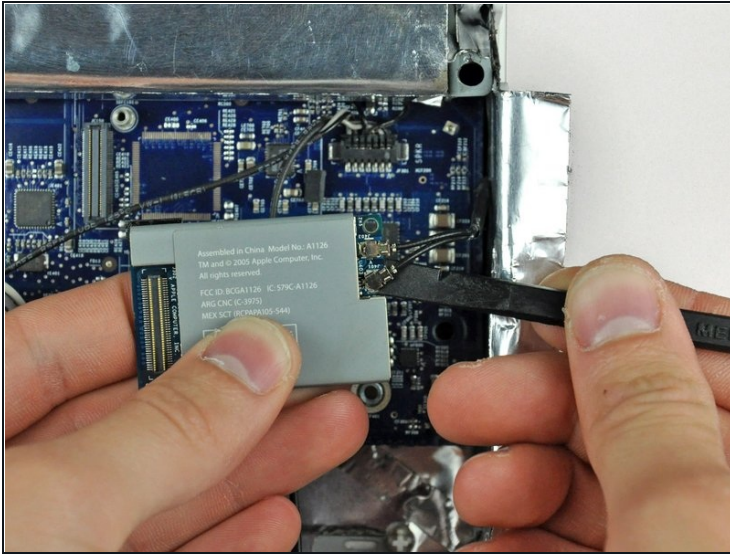
- Remove the two Phillips screws securing the AirPort/Bluetooth board to the logic board.
- ⓘ On some models, these may be T6 Torx screws.

## Step 18



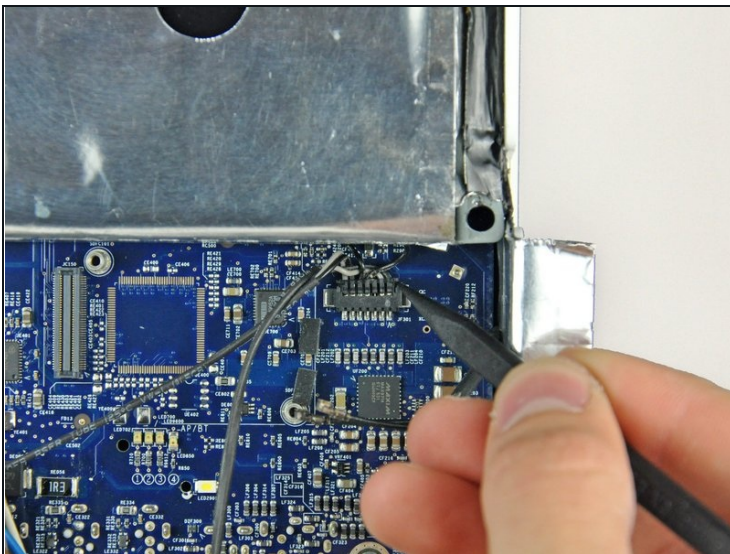
- Use your finger to lift the AirPort/Bluetooth board from its left edge, disconnecting it from the logic board.
- ⚠ Lift the board from its left edge **only**.

## Step 19



- Use the flat end of a spudger to pry both antenna connectors up off the AirPort/Bluetooth board.

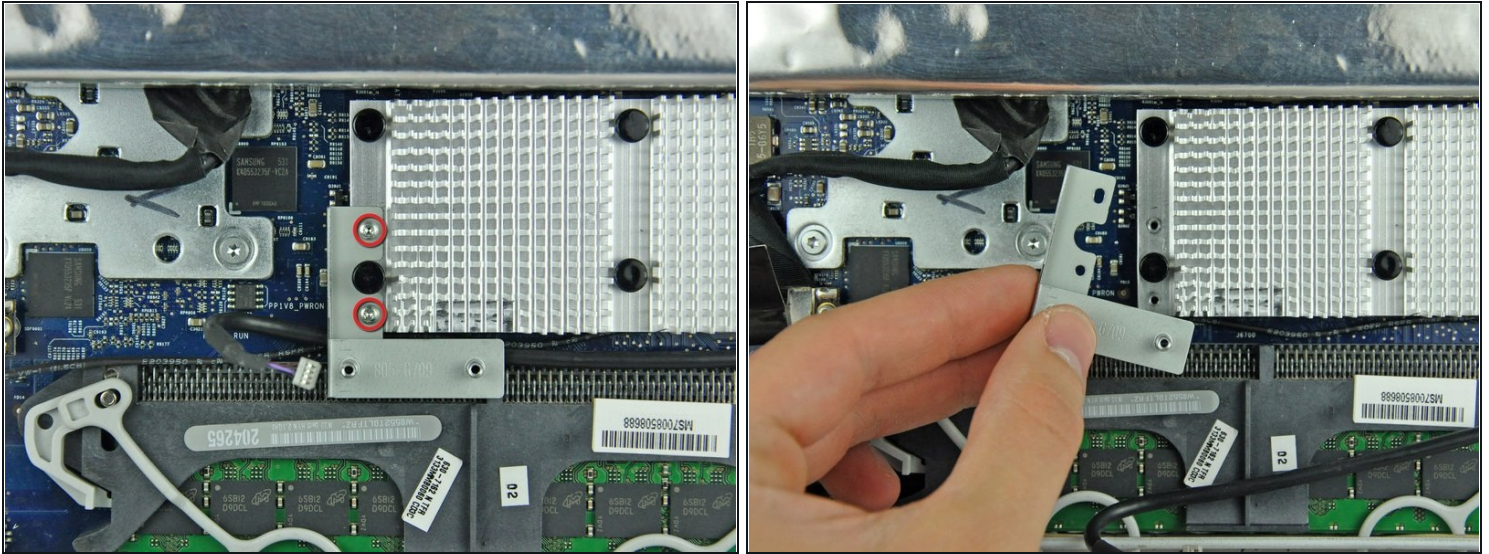
## Step 20 — Speakers



- Use the tip of a spudger to push the ears on either side of the speaker connector toward the top edge of the iMac.
- ⓘ It will be necessary to work from alternating sides to "walk" the connector out of its socket.

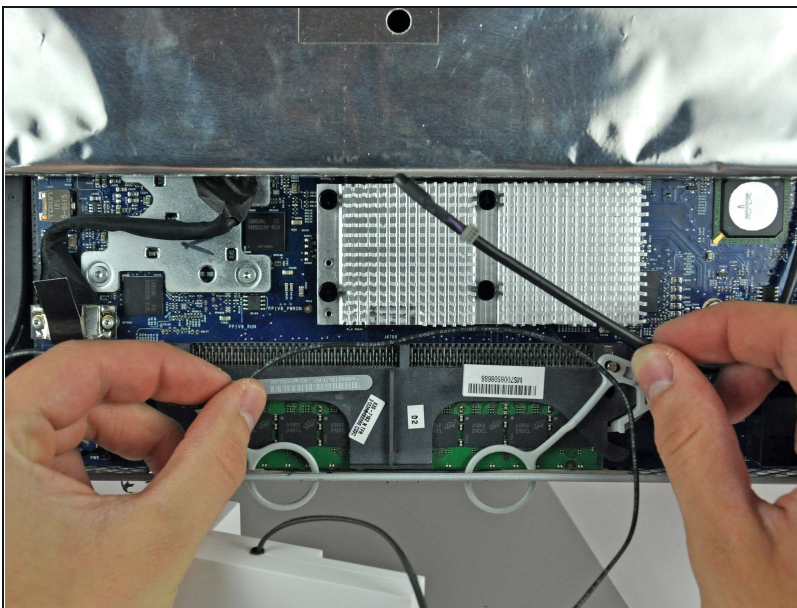


## Step 21



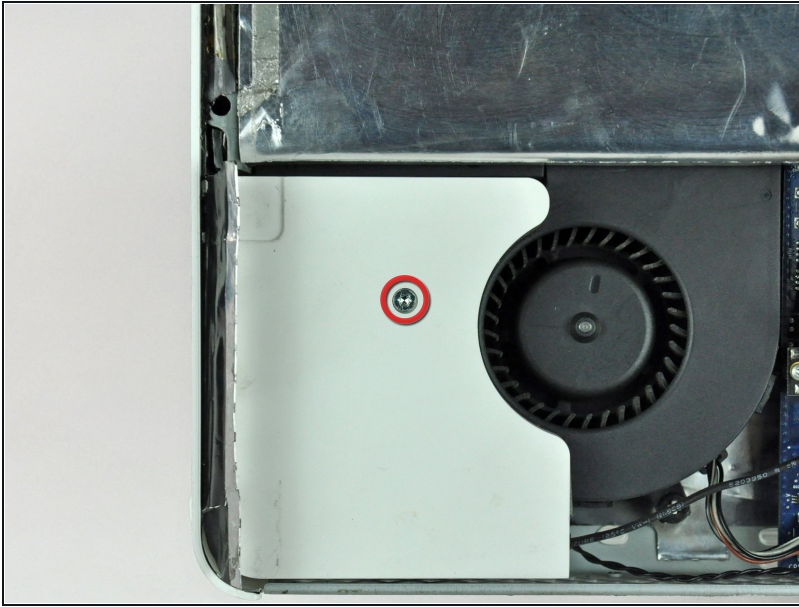
- Remove the two T6 Torx screws securing the IR board bracket to the aluminum heat sink on the logic board.
- Remove the IR board bracket.

## Step 22



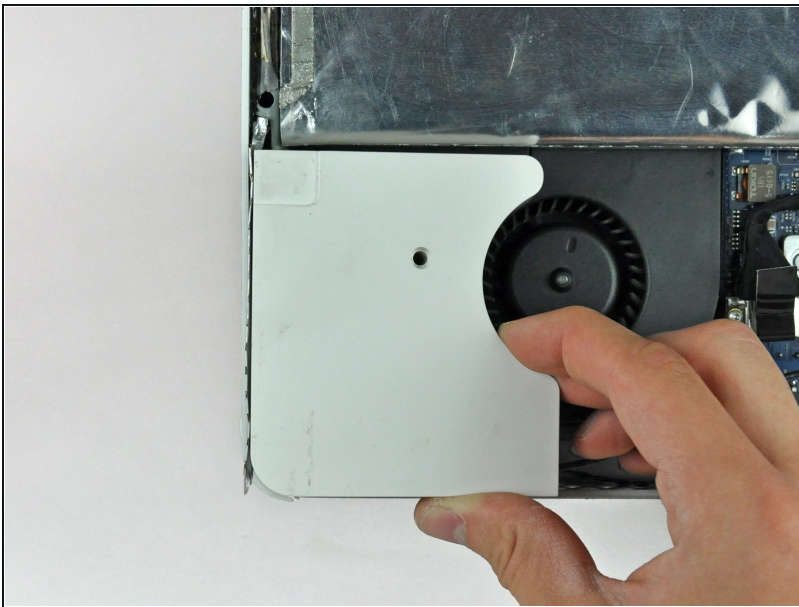
- De-route the speaker cable along the face of the logic board.

## Step 23



- Remove the single T10 Torx screw securing the left speaker to the rear case.
- ⓘ The screw for the left speaker is coarse-threaded.

## Step 24



- Lift the left speaker out of the rear case.
- ⓘ the left speaker cable may be routed under the hard drive fan cable and the power button cable. If so, disconnect both cables by pulling their connectors away from the face of the logic board.

To reassemble your device, follow these instructions in reverse order.