



# Saeco XSmall disassembly

Disassembly of a Saeco XSmall

Written By: VauWeh



---

## INTRODUCTION

To repair internal components of the Saeco XSmall, the top cover must be removed. It is a large molded plastic piece which includes the top and the front. This guide will show you how to remove this.



### TOOLS:

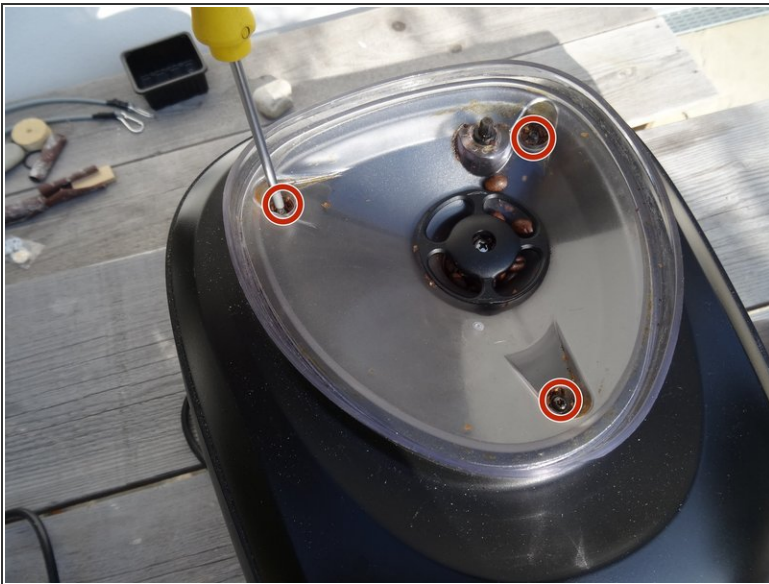
- [T10 Torx Screwdriver](#) (1)
  - [iFixit Opening Tools](#) (1)
-

## Step 1 — Saeco XSmall disassembly



- ⚠ Disconnect the power plug!
- i Remove pomace containers, water tank and brew unit

## Step 2



- Remove the lid of the bean container and remove all coffee beans.
- Remove the three Torx T10 screws securing the bean container.
- The finger guard made of black plastic for the grinder is attached with a Phillips screw. Remove it to remove the finger guard.
- Pull the bean container vertically up and remove it.



### Step 3



☑ Take a photo of the grinder or note the position of the adjuster.

- Pull the grinder adjuster upwards.

### Step 4



- Place the machine on its side. At the bottom of the top cover, to the left and right of the coffee spout, are two Torx T10 screws. Remove those.

## Step 5



- The cover over the coffee spout is held by detents. To release those insert a plastic opening tool. Start at the bottom, release the cover and set it aside.

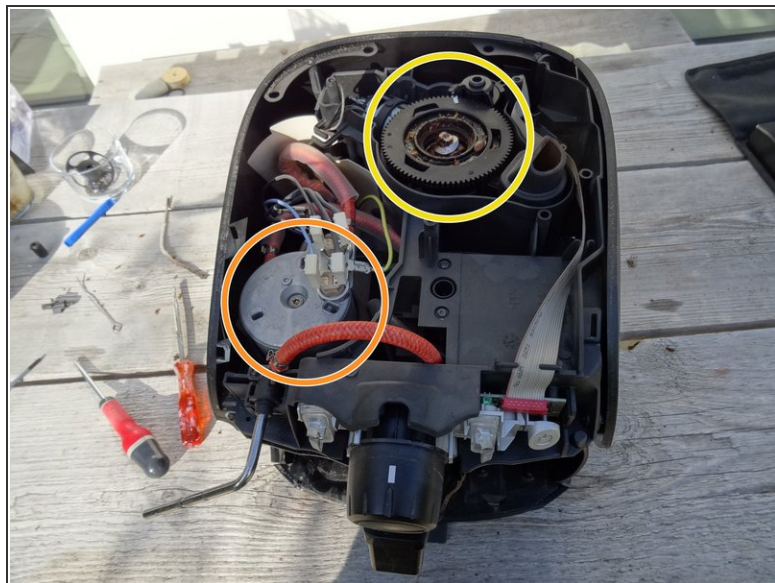
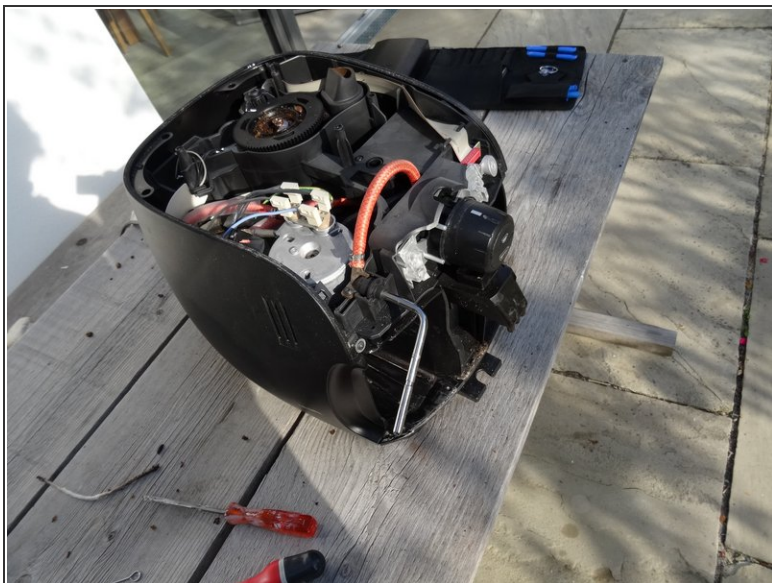
## Step 6



- The top cover is now only held by detents. At the front side of bottom are two tabs that go into the bottom plate, which you have to consider when removing it.
- Pay attention to the steam pipe.
- Start at the back seam with opening. Gently pry with a plastic opening tool to split it.
- When the detents are released, carefully lift the cover upwards with your hand and tilt it diagonally forward. Watch for the tabs that are in the bottom plate.
- The steam pipe is still in the front cover. You must push the cover over the steam pipe when lifting it.



## Step 7



- The coffeemaker is now open
- The water heater
- The coffee grinder

To reassemble your device, follow these instructions in reverse order.