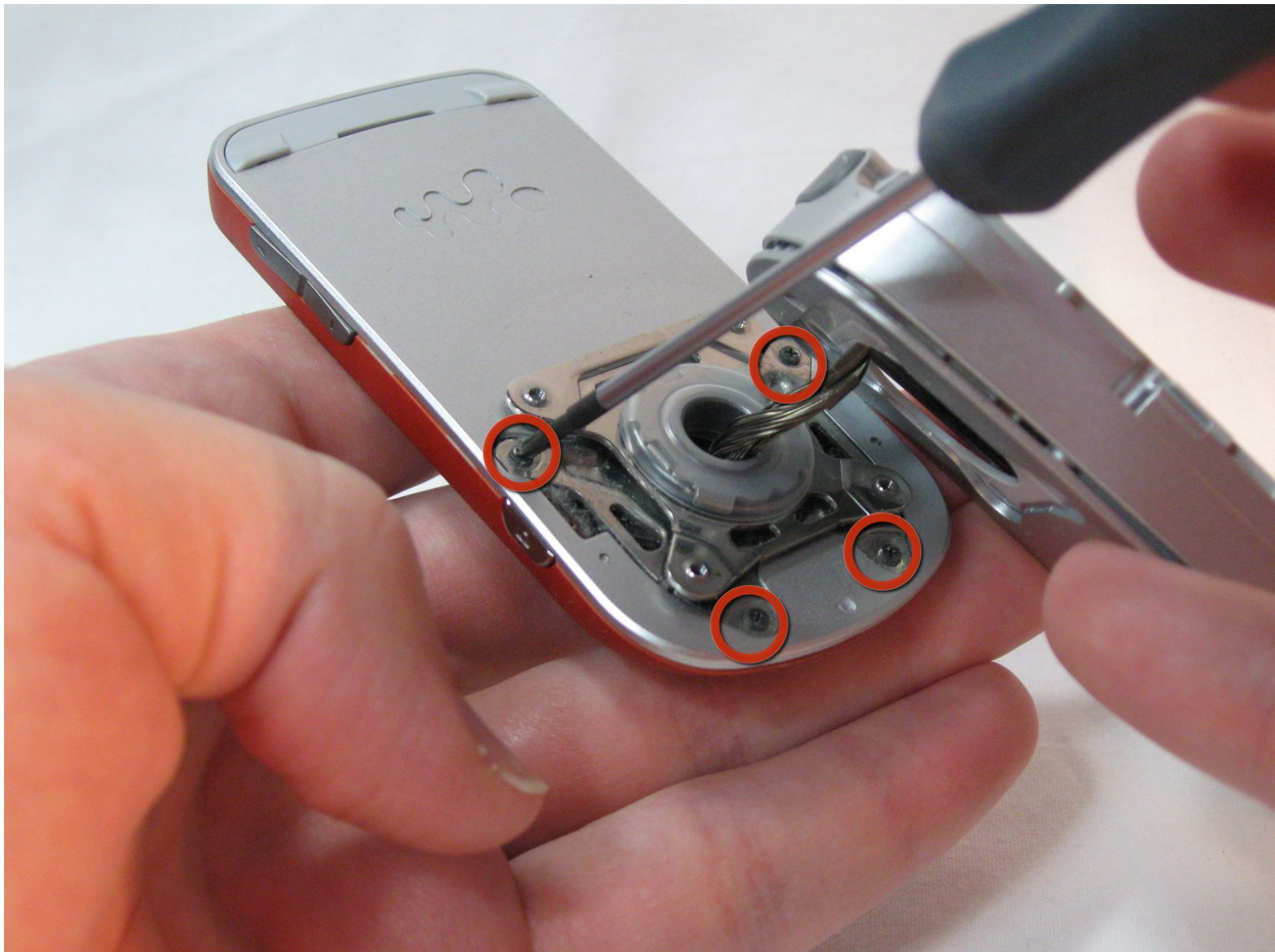




# Disassembling Sony Ericsson w600i LCD Section

Disassembling the LCD section allows access to the LCD Buttons and LCD Screen.

Written By: Beau Blanchard





## TOOLS:

- [precision screw drivers](#) (1)
- [Spudger](#) (1)
- [T5 Torx Screwdriver](#) (1)
- [Tweezers](#) (1)



## PARTS:

- [Replacement w600i LCD Display](#) (1)

## Step 1 — Disassembling Sony Ericsson w600i Battery Cover



- Grip the lower portion of the back of the phone and slide downwards.

## Step 2 — Battery



- Lift battery at the rounded notch near the bottom of the phone.



## Step 3 — Back housing



- Unscrew the four Torx screws from the backplate.
- The backplate may begin to separate from the keypad face. Do not try to remove it yet.
- The screws are T5 Torx screws, 5.6mm.

## Step 4



- Swivel the phone open.

## Step 5



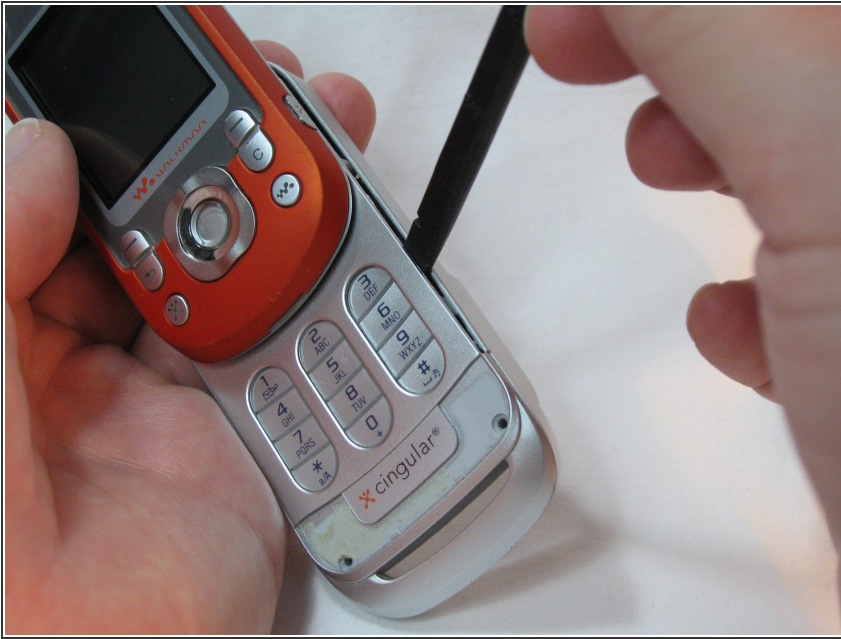
- Using the Spudger, gently pry up the U-shaped grey cover below the keypad.
- ☑ The cover is secured with adhesive tape. The gentler this is removed, the easier it will be to reassemble.

## Step 6



- Remove the two Torx screws from below the cover.
- These are T5 Torx screws, 8.6mm.

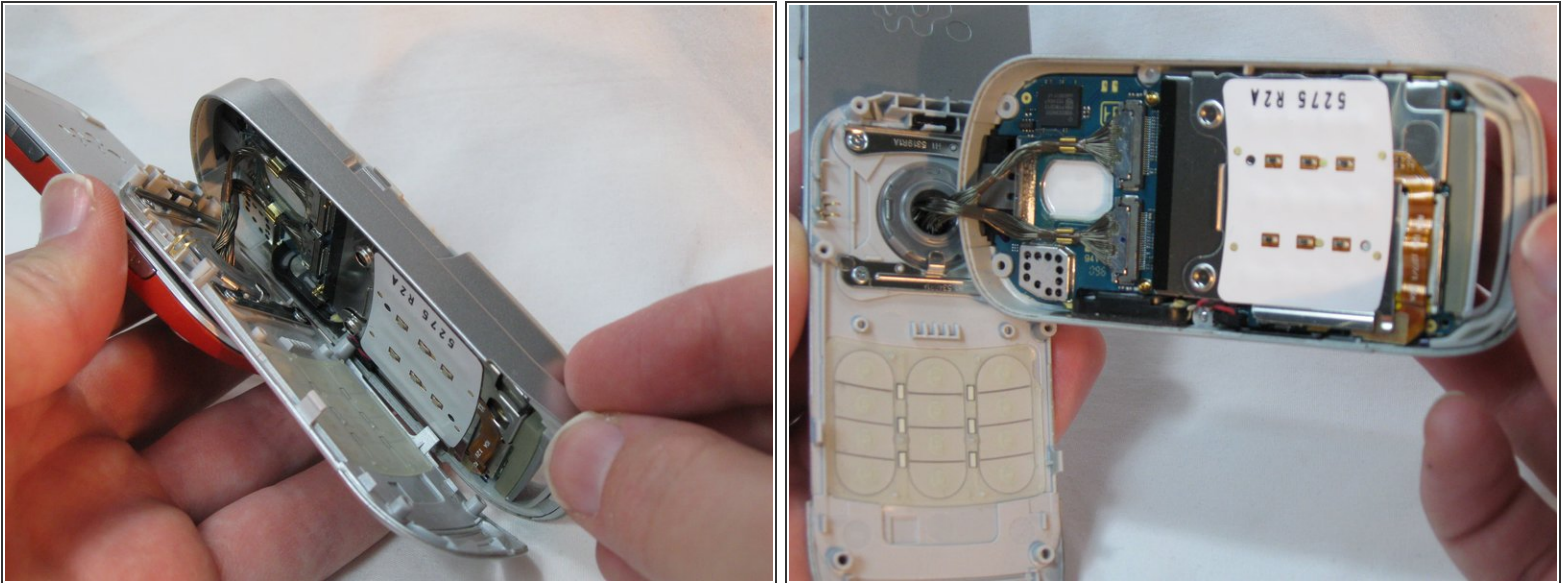
## Step 7



- Gently work a spudger or a fingernail between the keypad face and the backplate.
- ⓘ The pieces are clipped together most tightly at the bottom loop section.



## Step 8



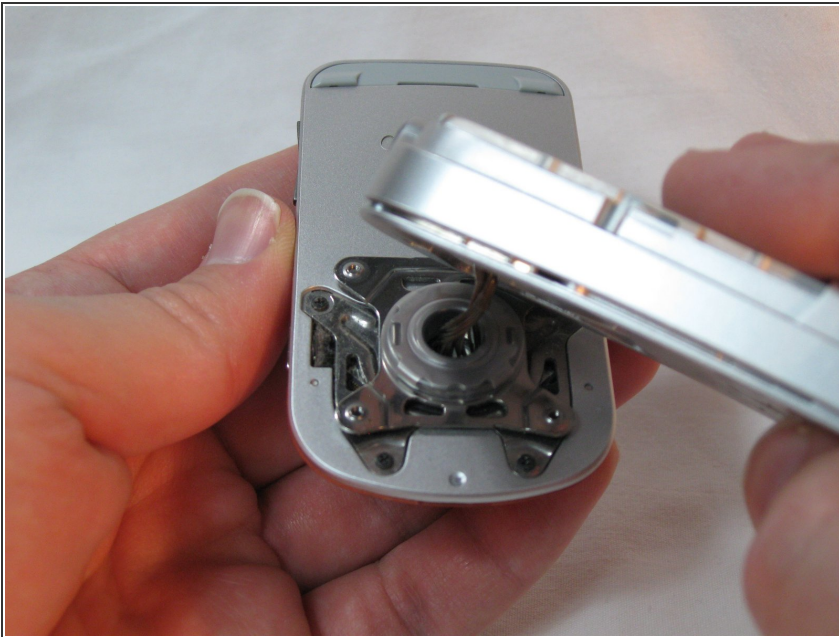
- Separate the keypad face from the backplate.
- ⓘ The keypad keys and the button component are both loose inside the phone, so take note of their orientation in case they become dislodged.
- ✦ Take note of the braided cord's state. Upon reassembly it should be returned to the same orientation.

## Step 9



- Holding the backplate away from the swivel, remove the 4 small Phillips screws and both stamped struts from the swivel assembly.
- Note that only the bottom strut has a tab.
- The screws are Phillips, 2.9mm

## Step 10



- The back housing is now disassembled, and the swivel assembly is revealed.



## Step 11 — LCD Section



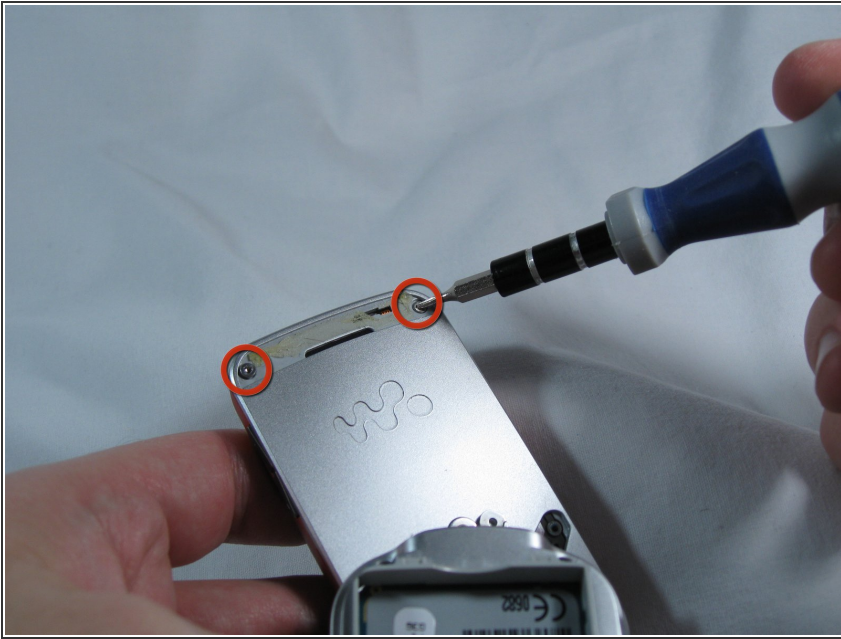
- Remove the four black Phillips screws holding the swivel assembly to the LCD section of the phone.
- ⓘ Be mindful of the screws, as they are very small.
- The screws are Phillips, 2.4mm

## Step 12



- Gently remove the grey plastic cover at the top-rear of the LCD section with a spudger.
- ★ It is secured with adhesive tape, the more gently you remove this piece, the easier reassembly will be later.

## Step 13



- Remove the two Torx screws revealed under the grey cover.
- The screws are Torx T5, 5.6mm

## Step 14



- Gently pry off the front face, starting at the bottom slot.



## Step 15



- Remove the Torx screws near the buttons.
- The screws are Torx T5, 5.6mm

## Step 16



- Remove the black front plate.
- Remove the button overlay, taking note of its position for reassembly. There are small grey nubs that correspond to holes in the overlay.



## Step 17



- Gently release the small grey retaining clips around the outside of the display assembly.
- Separate the display assembly from its backplate.
- ⓘ Take care; some of the side buttons may dislodge as the backplate is separated.
- The LCD section is now disassembled.

To reassemble your device, follow these instructions in reverse order.