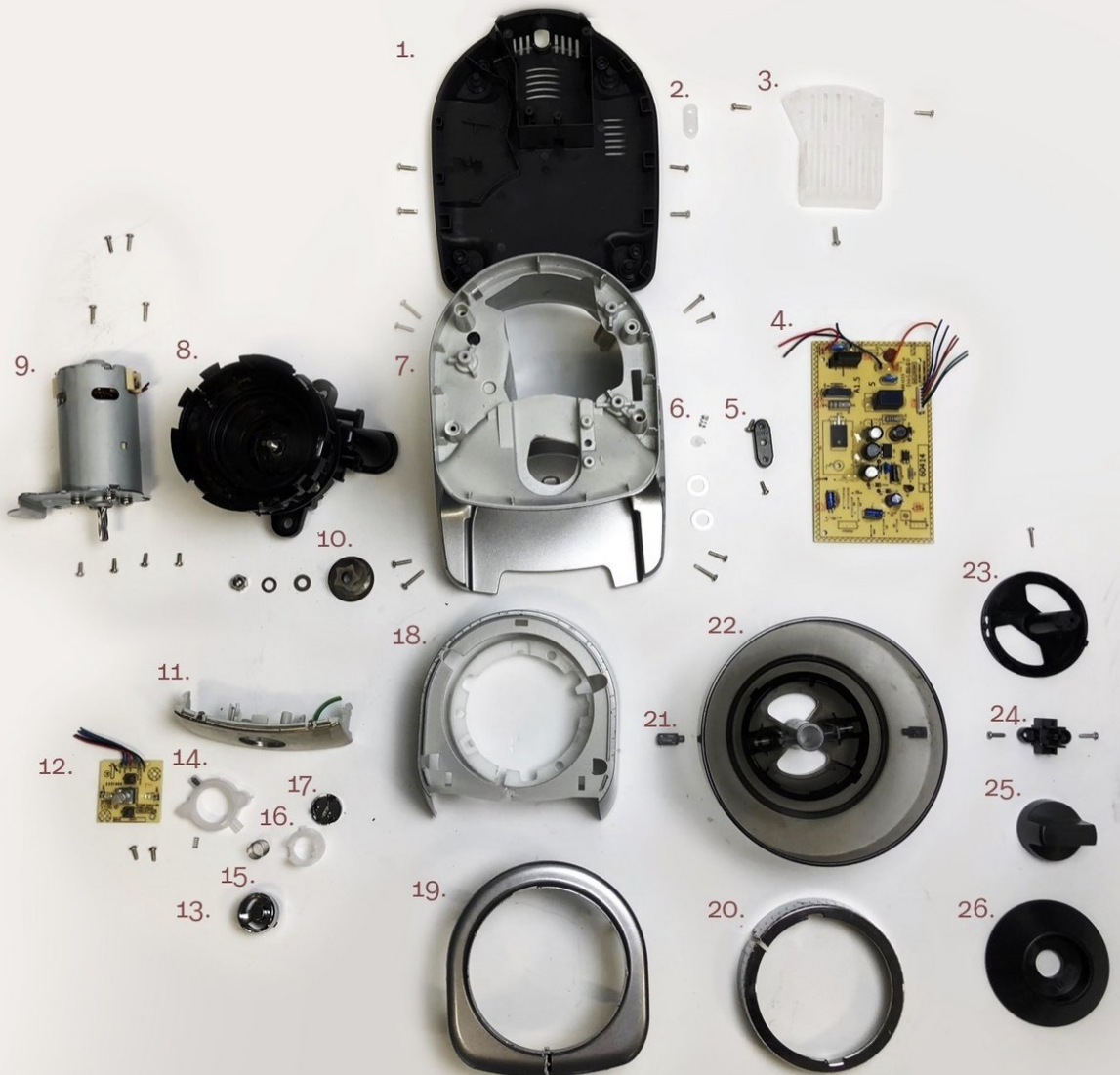




BCG600SIL Teardown

Written By: Alexandra Sigfusdottir

1. Base
2. Cord Bracket
3. Cord Compartment
4. Circuit Board
5. Wire Bracket
6. PCB Spring
7. Body
8. Grinder Dish
9. Motor
10. Burr Grinder
11. Plate
12. Timer Circuit Board
13. Timer Knob
14. Plastic Ring Insert
15. Knob Spring
16. Grind Control Knob
17. Knob Lid
18. Middle Section
19. Top Plate
20. Chrome Rim
21. Funnel Clip
22. Funnel
23. Knob Gamp
24. Knob Connector
25. Funnel Knob
26. Funnel Knob Skirt



INTRODUCTION

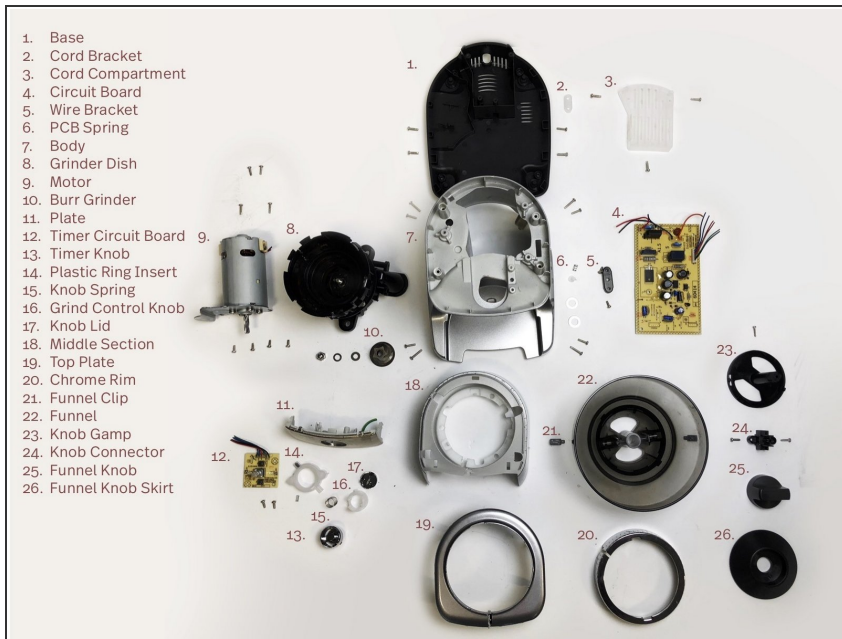
This is step by step tutorial on how to teardown the Breville Dose Control Pro, coffee grinder.



TOOLS:

- [Phillips #1 Screwdriver](#) (1)
 - [Flathead Screwdriver](#) (1)
 - [Hose Pliers](#) (1)
-

Step 1 — Product Overview



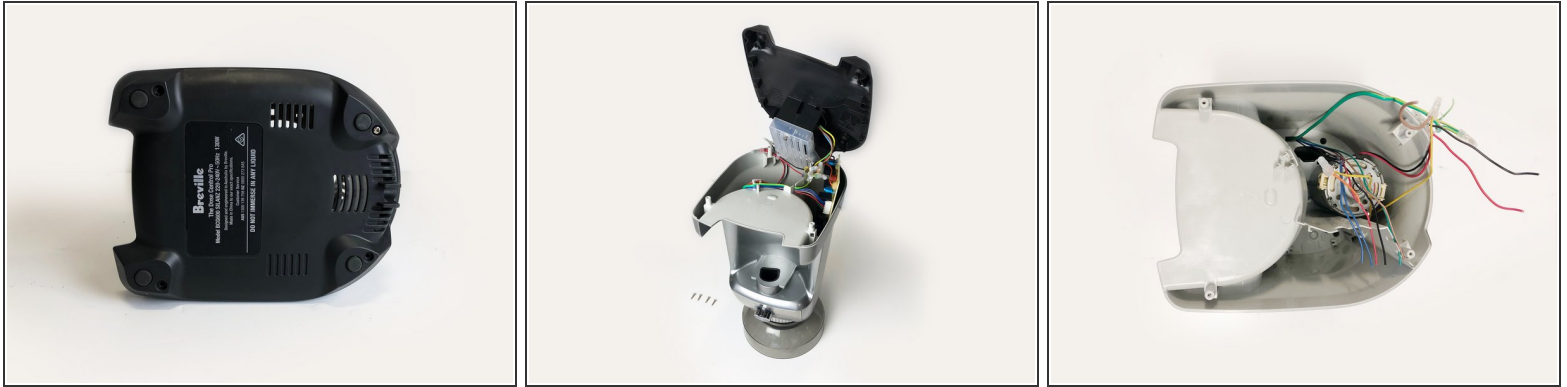
- This is the labelled exploded view of the product. If you are unsure of the names of the part, look at the corresponding numbers.

Step 2 — Remove the Funnel



- Start by removing the funnel by turning the knob from the lock position to the unlock position.
- Remove the knob skirt by pulling it up from the knob gamp, then remove the two screws connecting the knob connector with a Phillips screwdriver.
- Then extract the knob gamp from the bottom of the funnel by pulling it out.
- Then pull out the two funnel clips, that connect the funnel to rest of the coffee grinder in lock mode, from the bottom of the funnel.

Step 3 — Remove the Bottom Part



- Remove the four screws on the base of the coffee grinder with a Philips screwdriver.
- To access the electricals and the main lead, unscrew the three screws on the cord compartment attached to the internal of the base.
- The circuit board can be reached once the base has been removed, hanging loosely inside the machine.

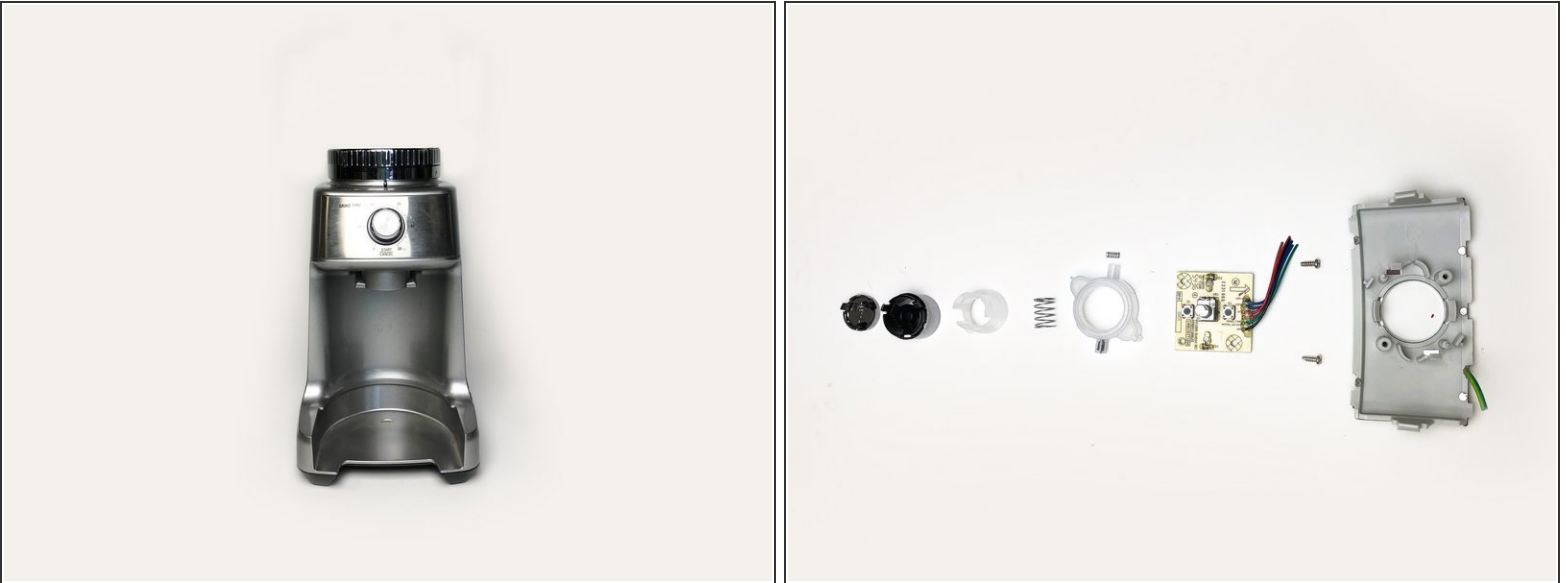
Step 4 — Removing the Motor



- A long Phillips screwdriver is needed to reach into the machine.
- Start by unscrewing the four screws that attach the metal plate, located on the end of the motor, to the plastic casing and the black plastic grinder mechanism.
- Once the motor has been removed, further unfasten the four screws and remove the corresponding washers on the base plate of the motor.
- Then, you will be able to see the mechanism.

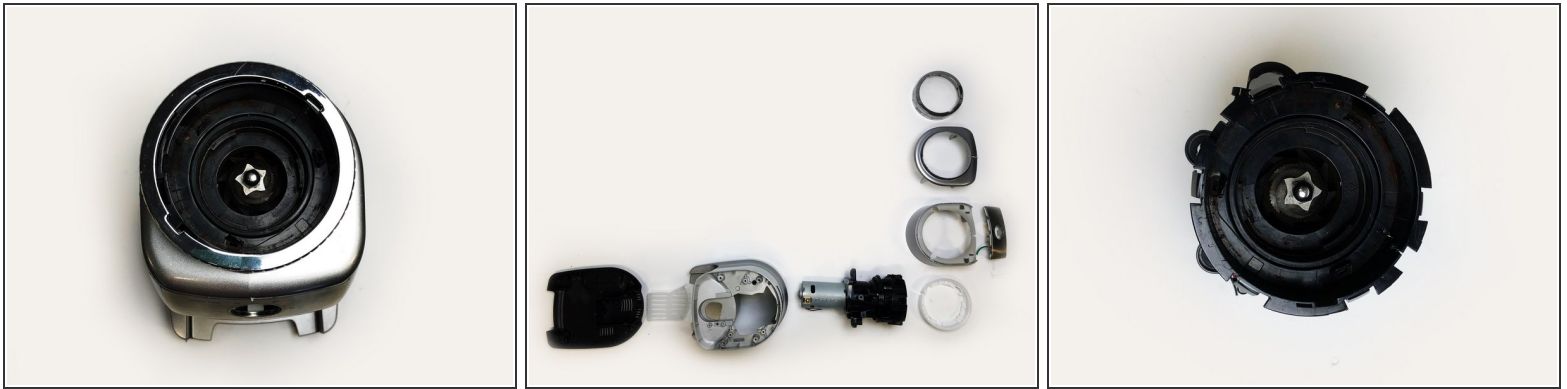
This document was generated on 2021-03-20 08:38:48 PM (MST).

Step 5 — Removing the Timer Knob



- The plate around the timer knob is attached together with clips.
- To remove the plate from the coffee grinder, put a flathead screwdriver between the connections and use force to lever it out.
- Next, unscrew the two screws connecting the timer circuit board to the plate with a Phillips screwdriver.
- Use pliers and pull the grind control knob apart from the timer knob, as it is connected with clips.
- Remove the plastic ring insert which is attached via a pin and a spring, by pulling it apart.
- Remove the knob lid with pliers, then extract the spring inside the timer knob.

Step 6 — Accessing the Burr Grinder



- The chrome rim around the grinder will need to be alleviated with a flathead screwdriver to unhook the clips attaching it together.
- Once the chrome rim is off, it will reveal a second white plastic rim that is secured to the grinder mechanism with three screws, unfasten these screws with a Phillips screwdriver.
- The top and middle outer casings surrounding the grinder mechanism will need to be split apart so that the mechanism can be removed. This is done with a flathead screwdriver, accompanied by a levering motion to unhook another set of clips attaching the parts together.
- When all of the parts have been separated the grinder mechanism can be accessed.
- To remove the metal burr grinder, use pliers and a steady grip to twist the hex nut off the top of the grinder in an anti-clockwise movement.
- Then, remove the two accompanying washers and the part will slide off its axle.