



LG GSA-T20N Optical Drive Teardown

Written By: Bryan





TOOLS:

- [Paper Clip](#) (1)
- [Phillips #0 Screwdriver](#) (1)

Step 1 — LG GSA-T20N Optical Drive Teardown



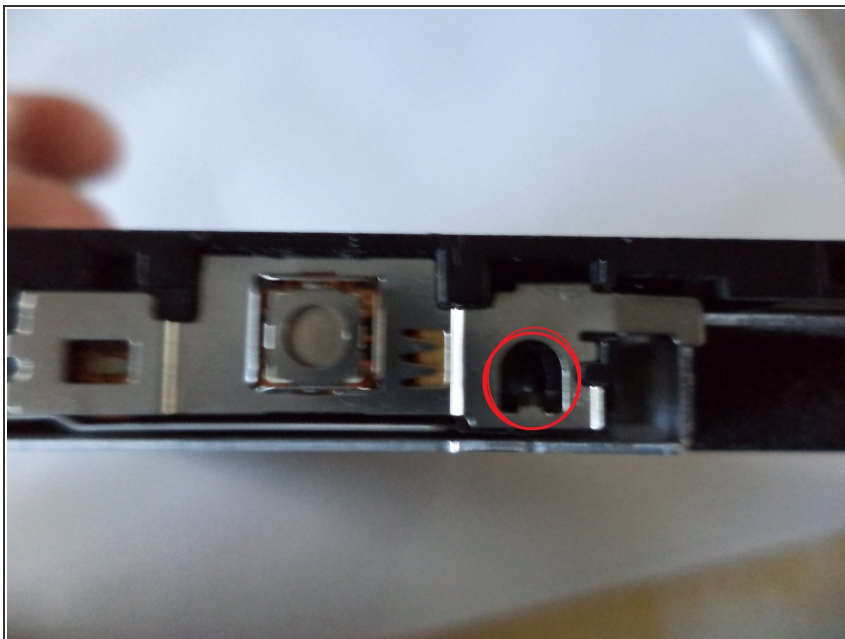
- Remove the three screws

Step 2



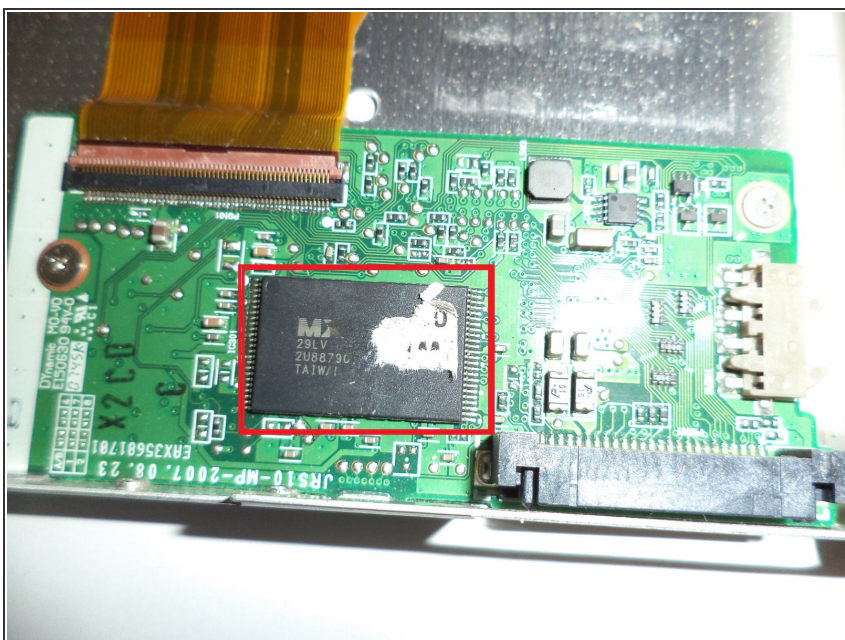
- Now you can take the hood of the burner.

Step 3



- Take a paperclip and push it in the hole to open the drive.

Step 4



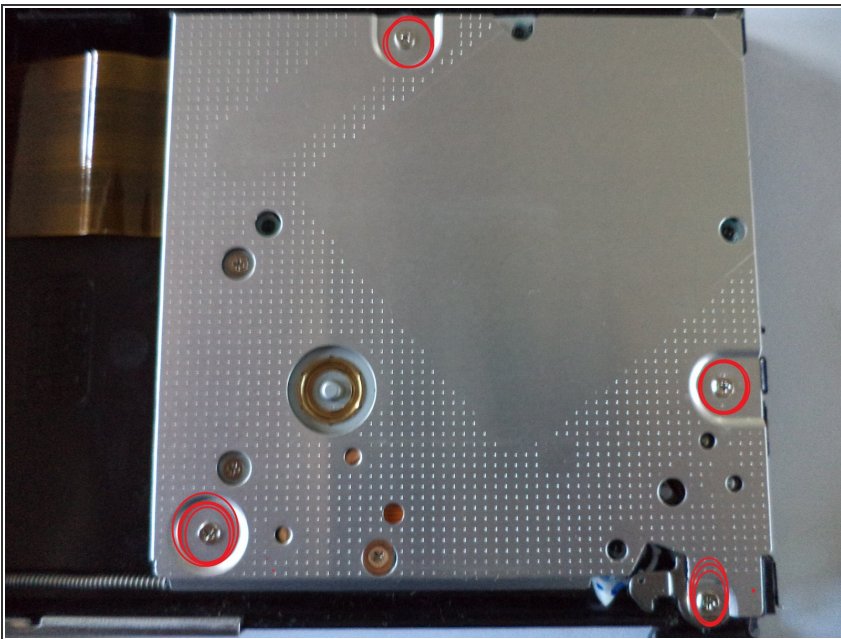
- Now you can see the PCB.
- Macronix Flash Memory for the Firmware of the optical drive.

Step 5



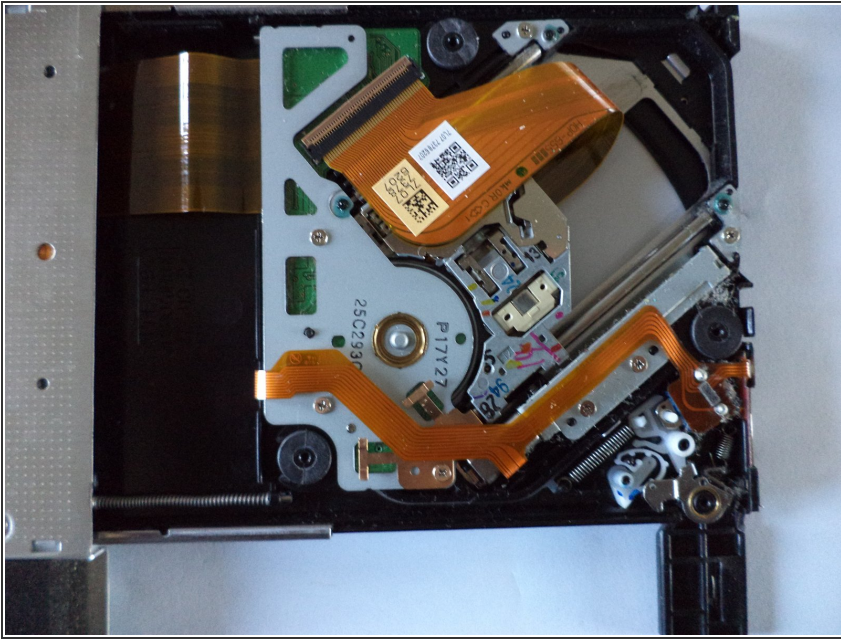
- Remove these screws.

Step 6



- And these screws.

Step 7



- Now you can see the drive motor and the laser unit.

To reassemble your device, follow these instructions in reverse order.