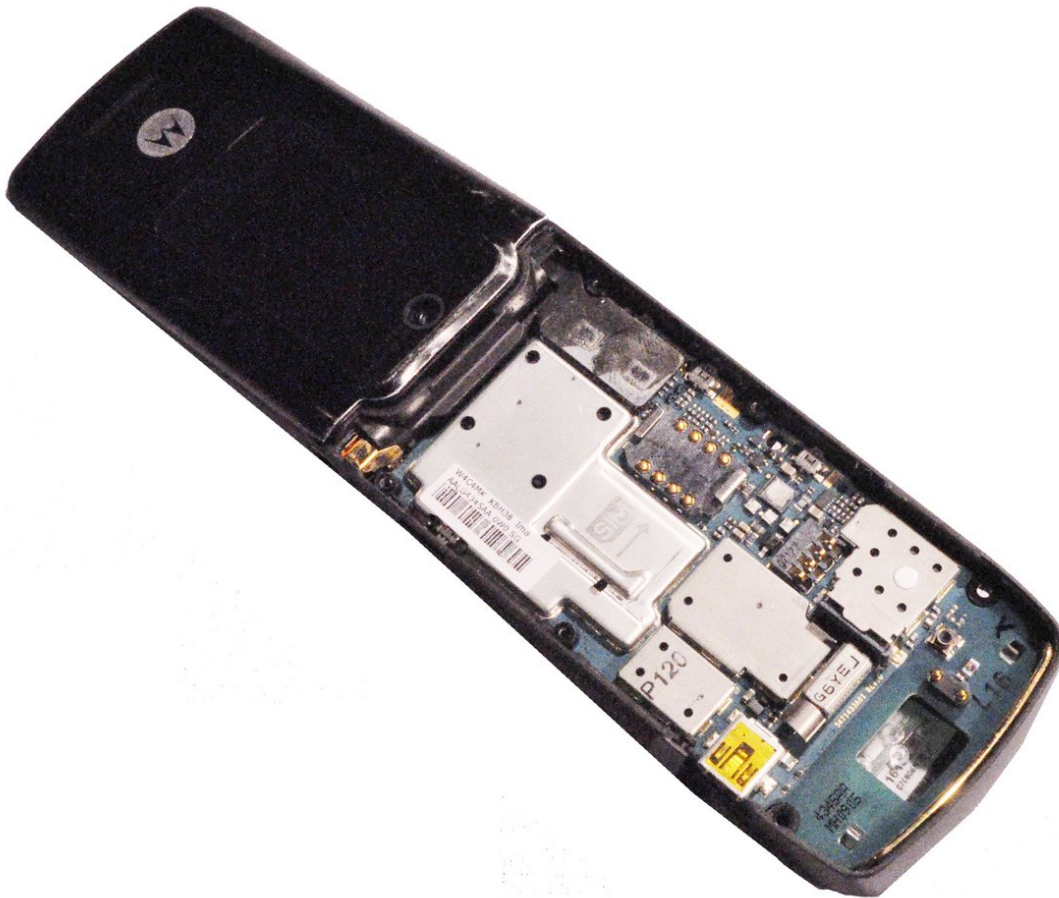




Motorola W490 Lower Metal Frame Replacement

This guide will give the user assistance to install or replace the lower metal frame.

Written By: Will Edwards

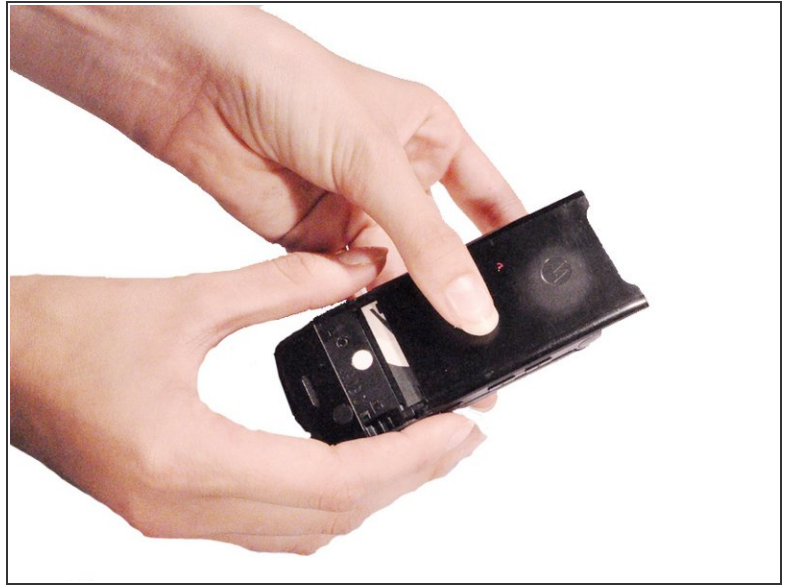




TOOLS:

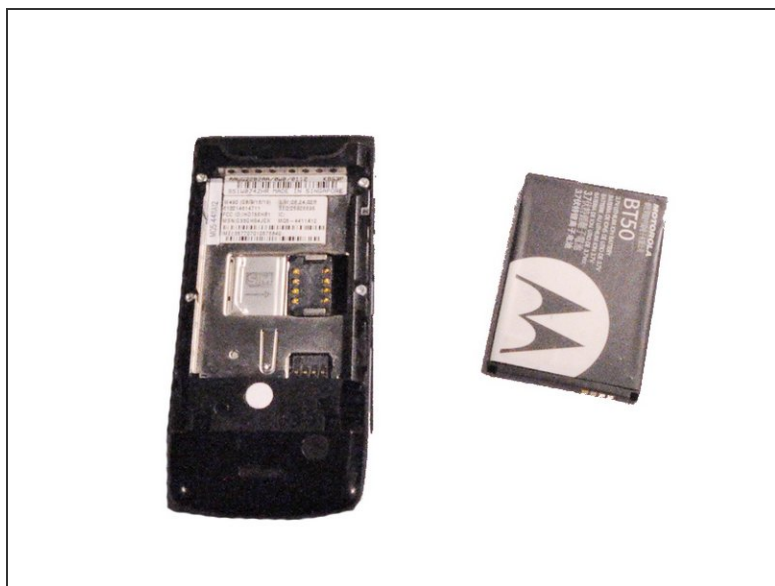
- [T5 Torx Screwdriver](#) (1)
-

Step 1 — Phone Casing



- Pick up the cell phone with the back facing towards you.
- Push down on the silver tab located at the top center of the back of the Motorola W490 cellphone.
- While pushing down on the silver tab, slide the back cover towards the silver tab. Remove the back cover.

Step 2 — Battery



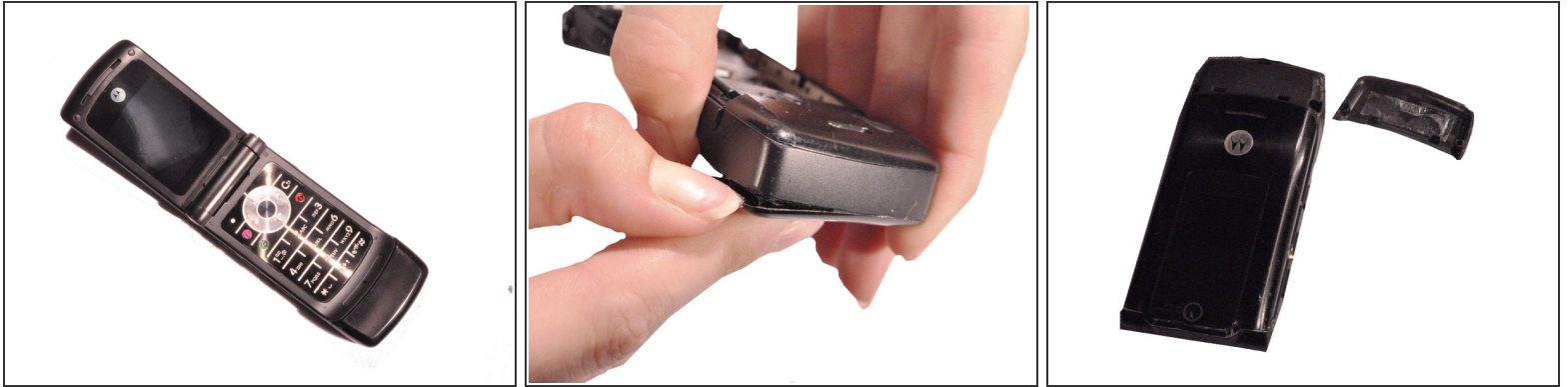
- Remove the battery by pulling the battery from the top corners labeled "Pull Here" located on either side of the top of the battery.
- Set the battery aside.

Step 3 — Lower Metal Frame




- After taking out the battery, locate four star-shaped 5.4 mm T6 screws on top and middle of the rear of the phone. Indicated by the red circles.
- Remove all the screws using the Torx T6 Screwdriver.

Step 4



- Turn over the phone to the front side and open up the phone, displaying the keypad.
- Use a plastic opening tool or your fingernail to make a gap between the front bottom cover and the phone.
- Pull and set the glued plastic cover aside.

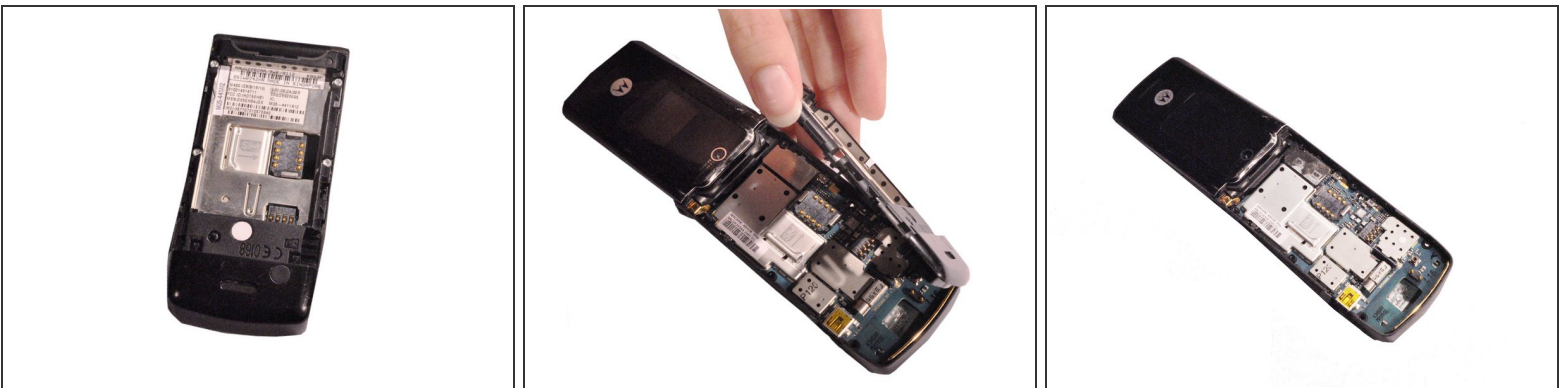
 Be careful not to break the plastic cover when making a gap or pulling. The plastic cover is superglued to the phone.

Step 5



- Under the plastic cover, locate two star-shaped T5 screws.
- Use the Torx T5 Screwdriver to remove the two screws.

Step 6



- Turn over the phone to the back side of phone where the battery was removed.
- Use hands to remove the unscrewed rear frame of the phone.
- Set aside the rear metal frame.

To reassemble your device, follow these instructions in reverse order.

This document was generated on 2020-11-28 02:41:56 AM (MST).

