

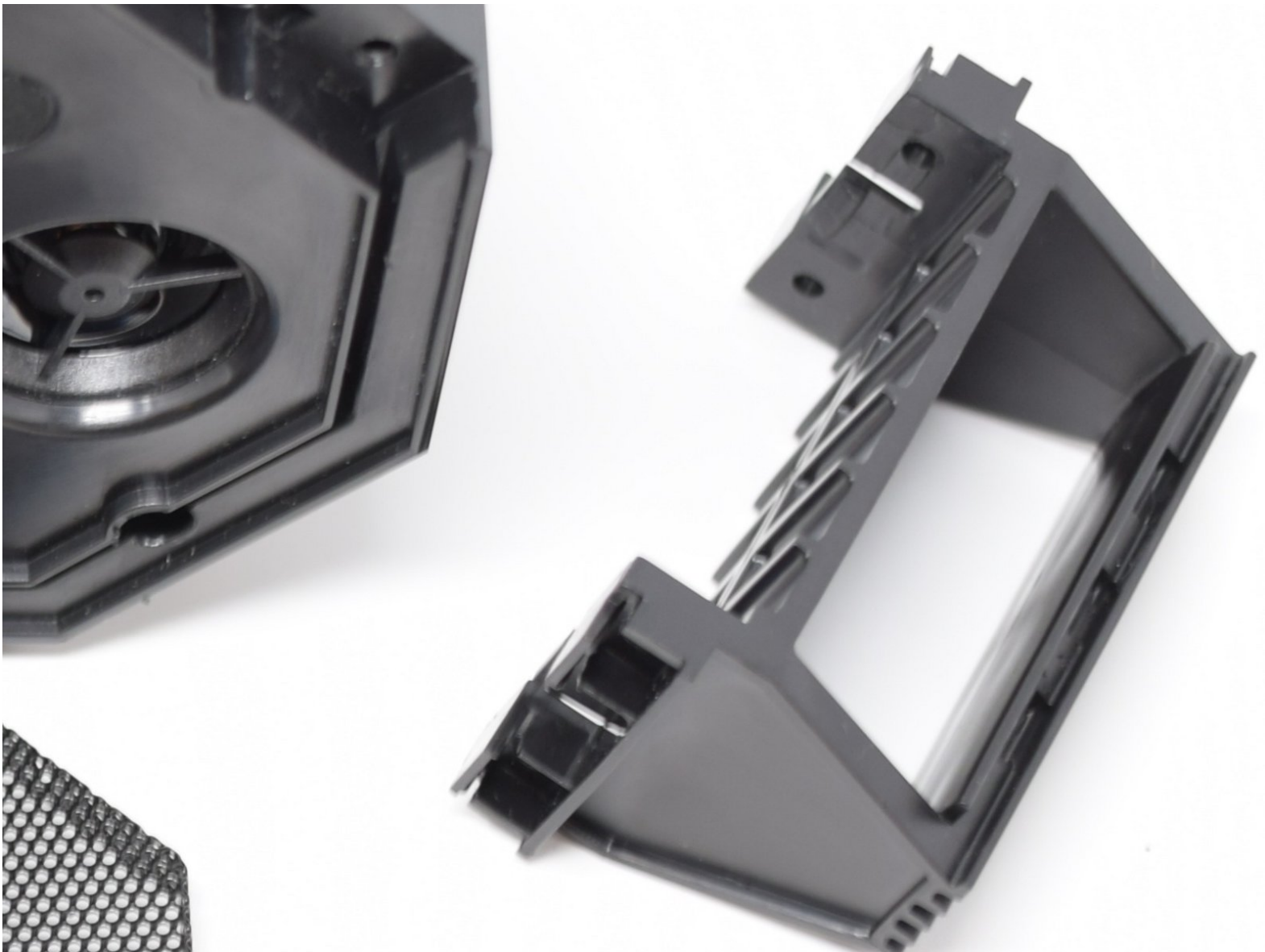


Altec Lansing Super Life Jacket Speaker

Handle Replacement

If your Altec Lansing Super Life Jacket speaker handle damaged, faculty, or loose, use the following step-by-step guide to replace it.

Written By: Tien Nguyen



INTRODUCTION

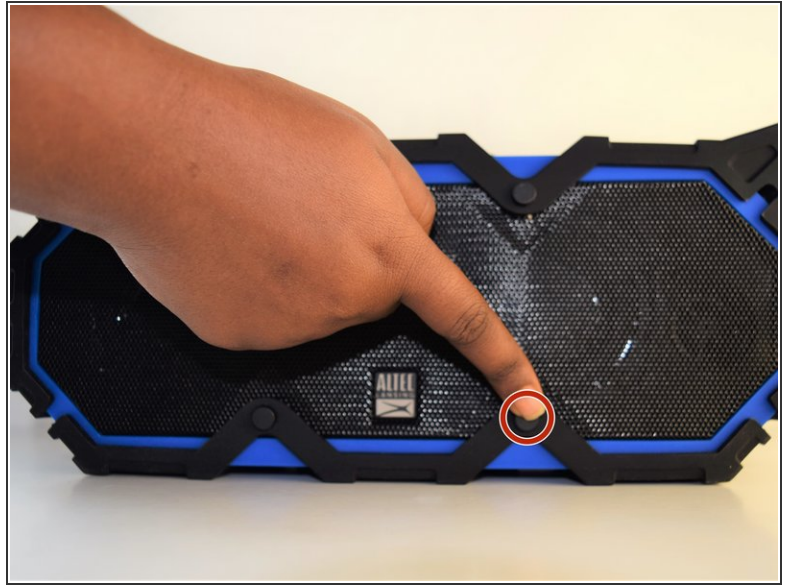
If your Altec Lansing Super Life Jacket speaker handle damaged, faculty, or loose, use the following step-by-step guide to replace it.



TOOLS:

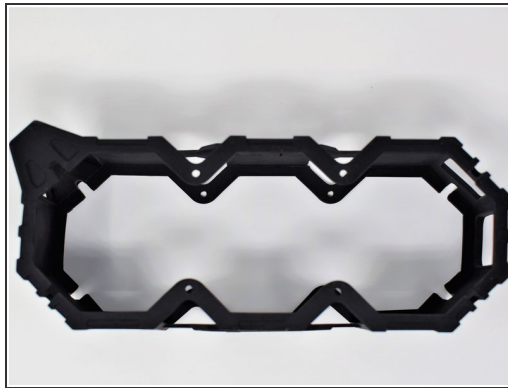
- [Phillips #0 Screwdriver](#) (1)
-

Step 1 — Speaker Handle



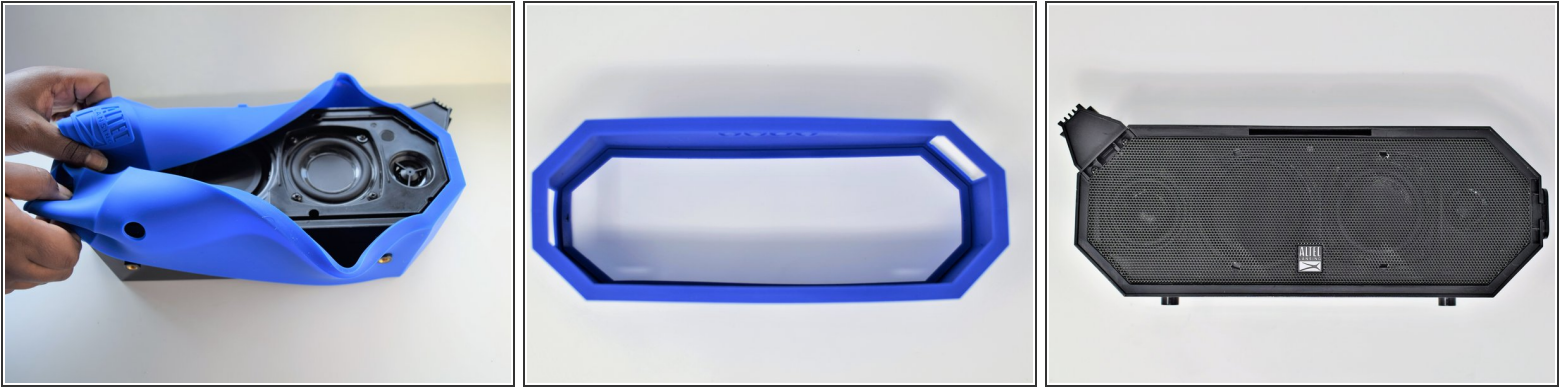
- Use your hands to remove the pegs (4) located on both sides of the speaker.

Step 2



- Remove the outer black rubber housing of the speaker.

Step 3



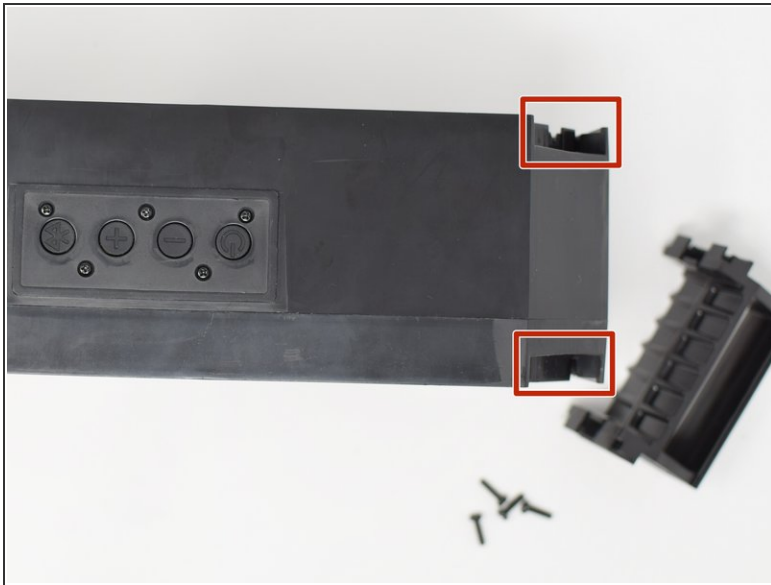
- Remove the inner blue rubber housing from the speaker.

Step 4



- Remove the 4 7.8mm Phillips screws on the speaker cover using the PH0 screwdriver.

Step 5



- Carefully slide the handle off the speaker but pushing upwards to the direction the handle is facing.

To reassemble your device, follow these instructions in reverse order.