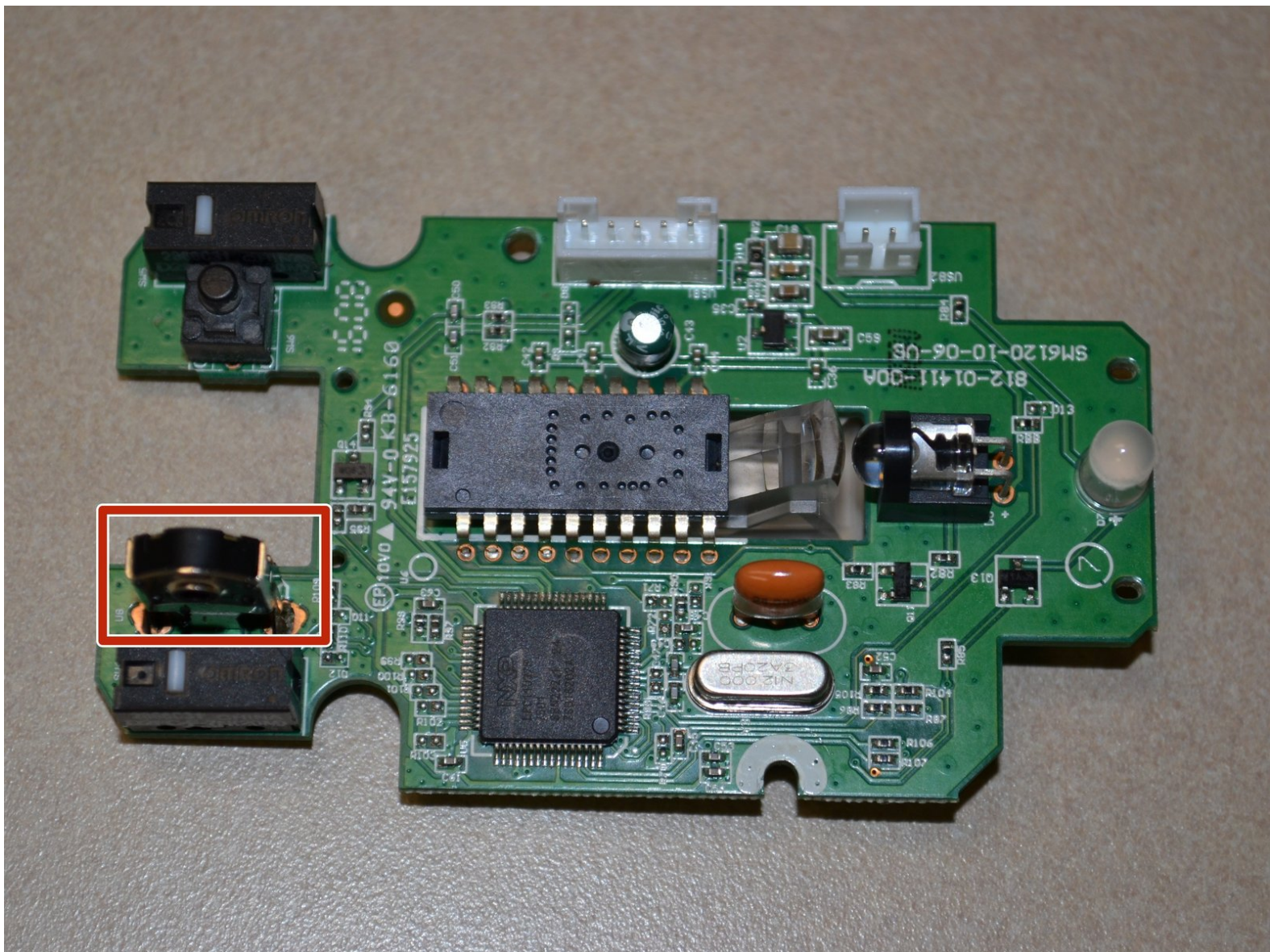




# Corsair Katar Scroll Wheel Sensor

This guide will show how to replace the scroll wheel sensor on a Corsair Katar mouse.

Written By: Margaret Loughren



---

## INTRODUCTION

If the scroll wheel sensor on your Corsair Katar mouse is broken, this guide will show you how to replace it.

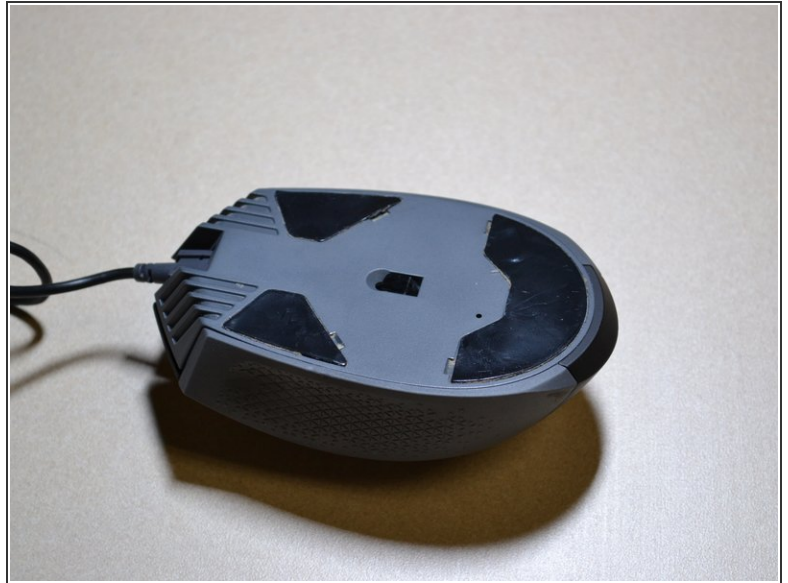
---



### TOOLS:

- [JIS #0 Screwdriver](#) (1)
  - [iFixit Opening Tools](#) (1)
  - [Soldering Iron](#) (1)
-

## Step 1 — Corsair Katar Disassembly



⚠ Unplug your mouse before starting.

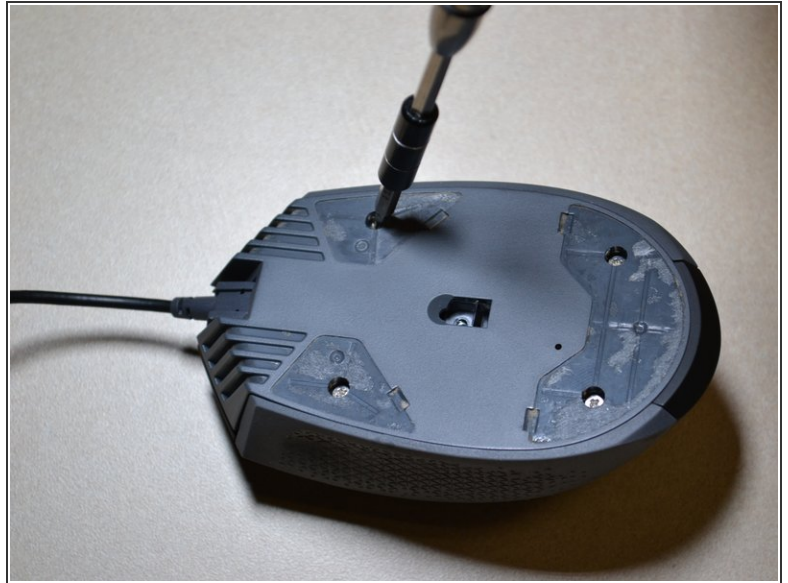
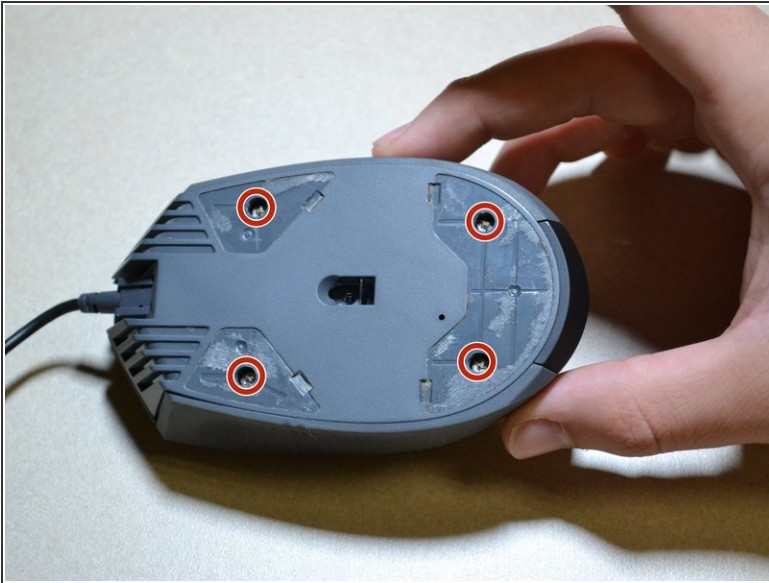
- Flip the mouse over so the bottom is facing up.

## Step 2



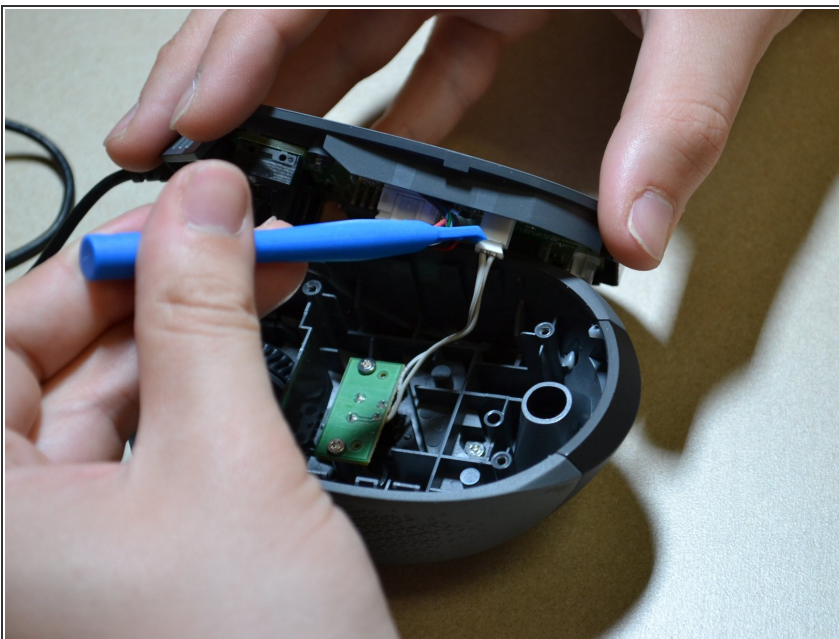
- Remove the three skates on the bottom of the mouse using the plastic opening tools.
- ⓘ Skates will be very sticky.

### Step 3



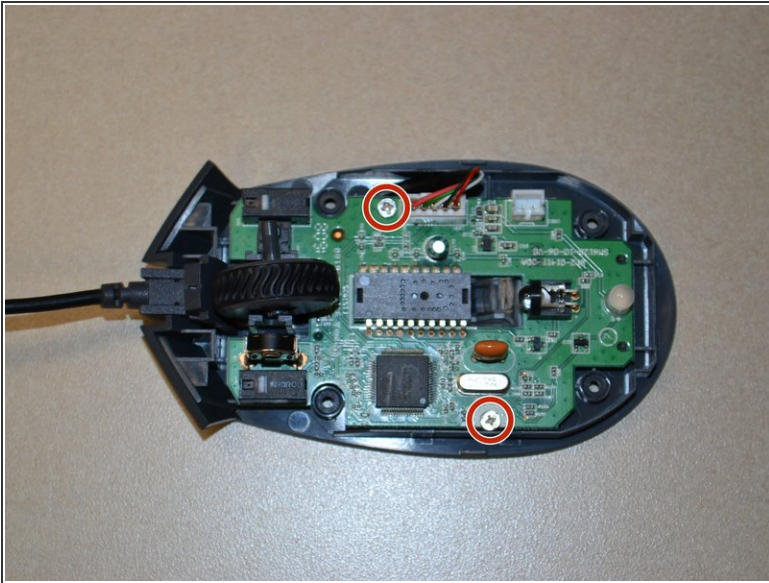
- Use the JIS 0 screwdriver to remove the four 5 mm screws on the bottom of the mouse.

### Step 4



- Detach the bottom of the mouse from the upper shell.
- ⚠ Remove the shell slowly so as not to damage the white DPI cable inside the mouse.
- Use the plastic opening tool to detach the white DPI sensor cable from its port.
- ⓘ Alternatively, you can use your hand to remove the DPI sensor cable by wiggling it out of the port.

## Step 5 — Scroll Wheel



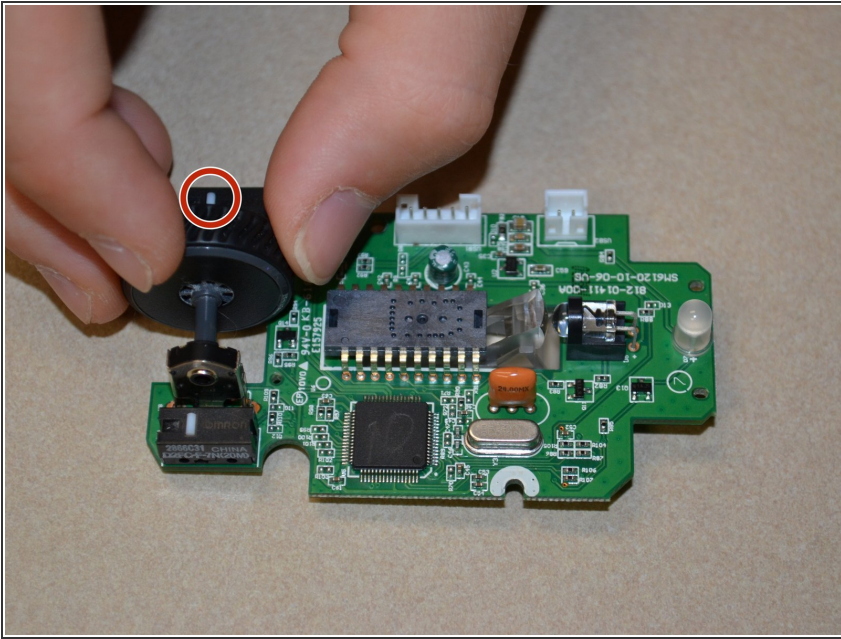
- Use the JIS 0 screwdriver to remove the two 5mm screws on the motherboard.

## Step 6



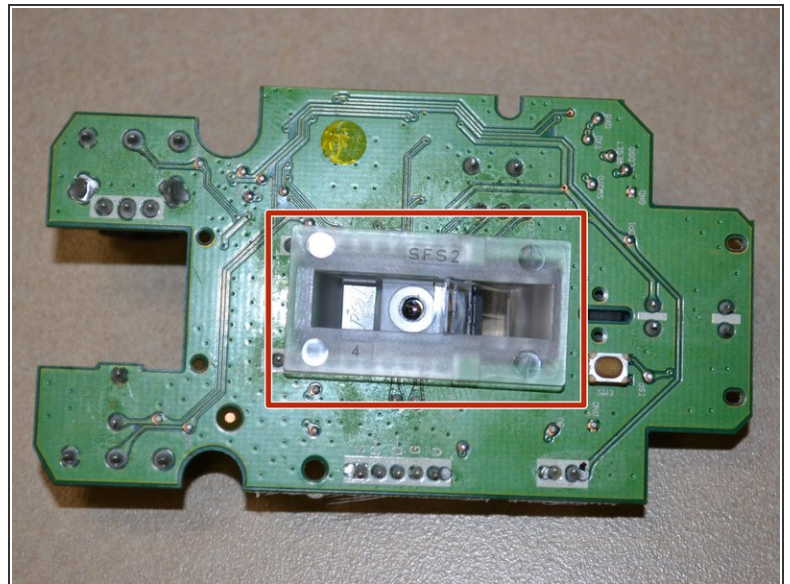
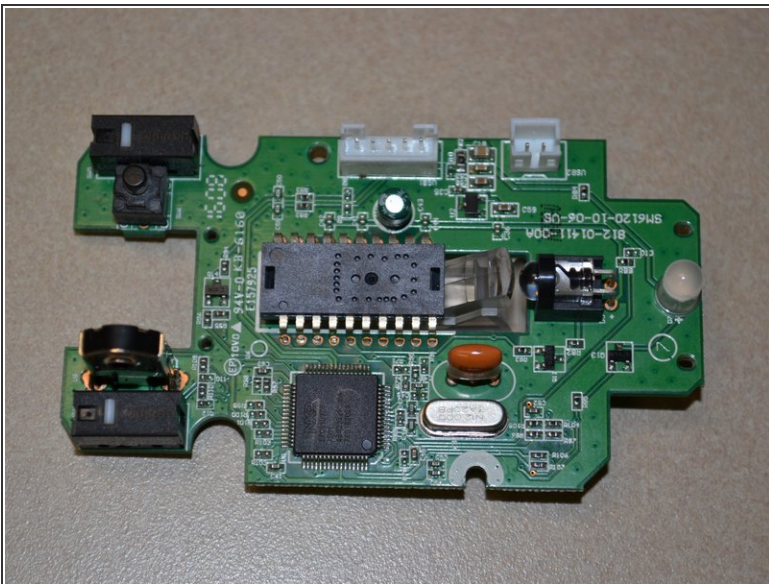
- Use the plastic opening tool to pry the white cable jack away from the motherboard.
- Lift the motherboard away from the bottom of the mouse.

## Step 7



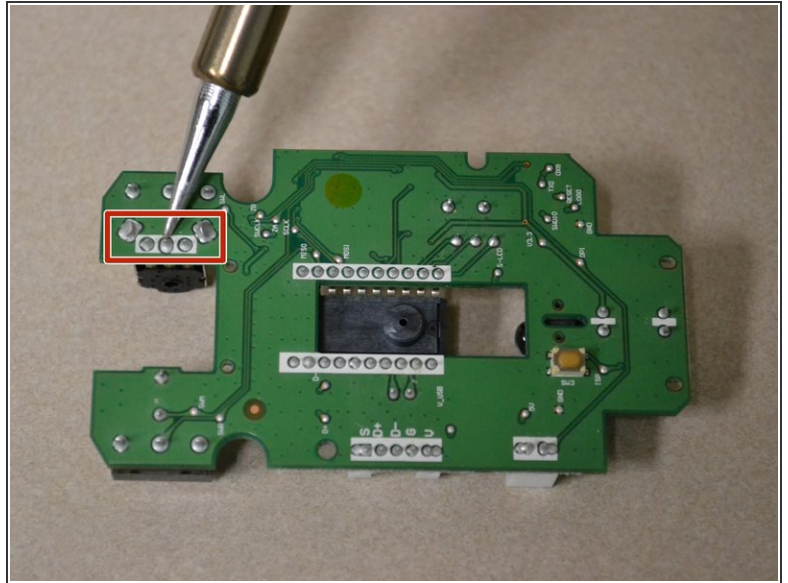
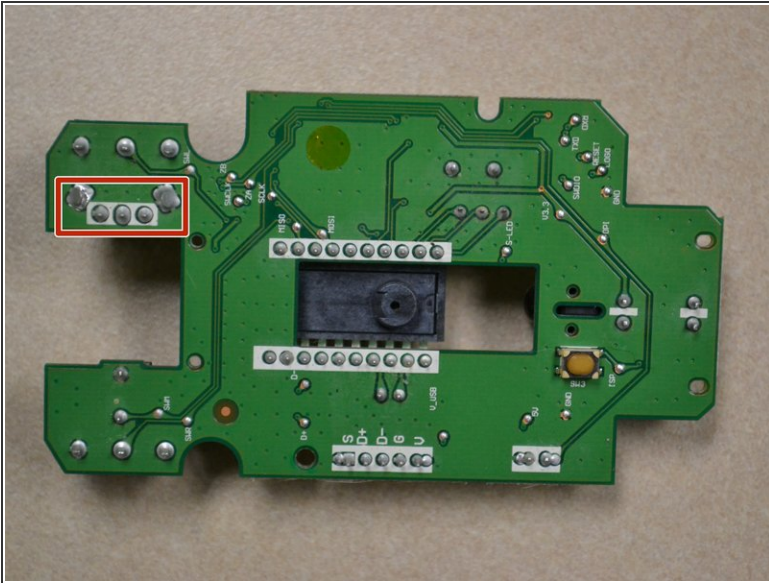
- Push the scroll wheel to the right side of the motherboard as shown, then pull it away from the board to remove.

## Step 8 — Scroll Wheel Sensor



- Flip the motherboard over and remove the clear plastic cover from the bottom of the board.

## Step 9



- Desolder the 5 connecting pins to remove the scroll wheel sensor from the motherboard.

To reassemble your device, follow these instructions in reverse order.