



Mitsubishi WD57734 Input/Output Board Replacement

Use this guide to install a new input/output board for your Mitsubishi DLP TV if it is not transmitting and receiving signals properly.

Written By: Kylin



INTRODUCTION

The following entails a detailed list of instructions to properly and safely remove and replace a defective input/output board for a Mitsubishi WD57734 television.



TOOLS:

- [Anti-Static Wrist Strap](#) (1)
- [Large Needle Nose Pliers](#) (1)
- [Phillips #0 Screwdriver](#) (1)
- [Phillips #1 Screwdriver](#) (1)
- [Phillips #2 Screwdriver](#) (1)



PARTS:

- [Mitsubishi WD57734 I O Board](#) (1)

Step 1 — Lamp



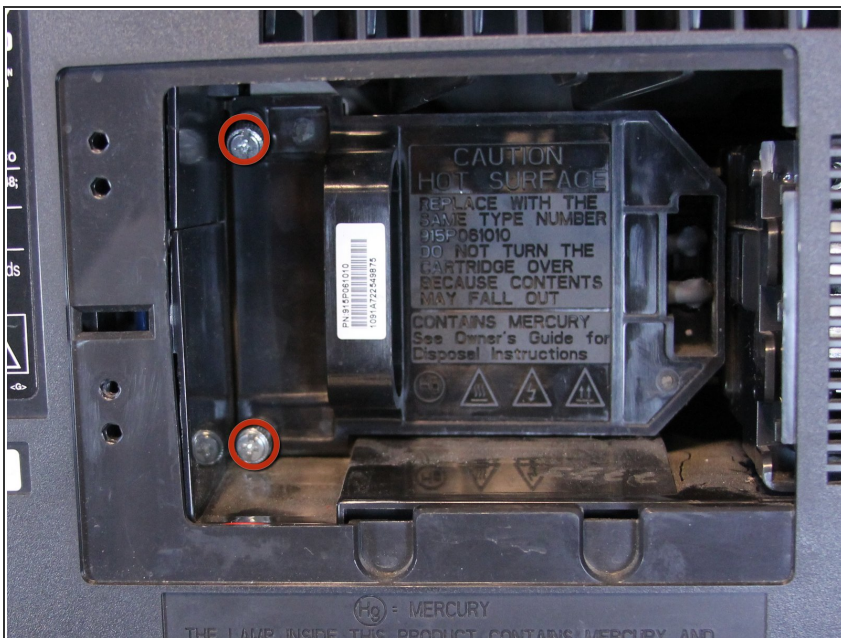
- ❗ Before disassembling your television, be sure it is powered off and unplugged.
- Remove the single 18 mm Phillips #1 screw on the lamp access panel.

Step 2



- Pull the lamp access panel off of the back panel of the television by pulling straight back on the left side of the panel near the screw then pulling to the left.

Step 3



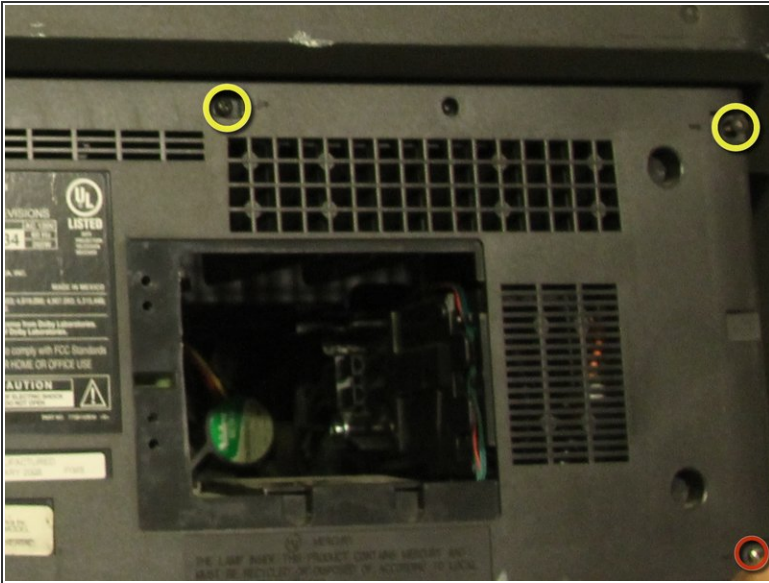
- Loosen the two Phillips #2 screws securing the lamp housing to the television until the screws will swivel vertically.
- ⓘ These two screws are permanently attached to the lamp housing and cannot be removed completely.

Step 4



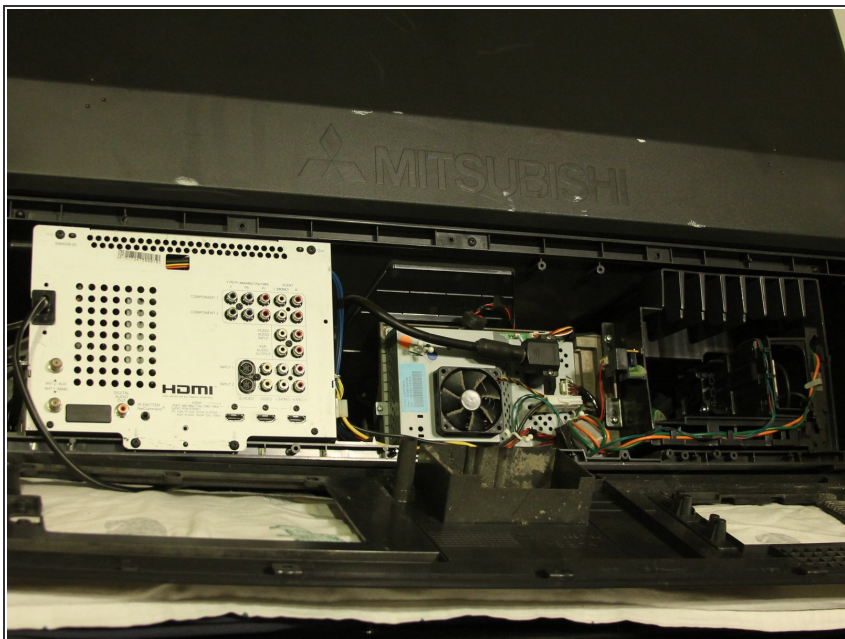
- Using the handle, pull the lamp housing straight back out of the television.
- ⚠ Do not touch the glass of the lamp with your bare hands. The oil from your fingers can distort the TV image and lead to other issues.

Step 5 — Back Panel



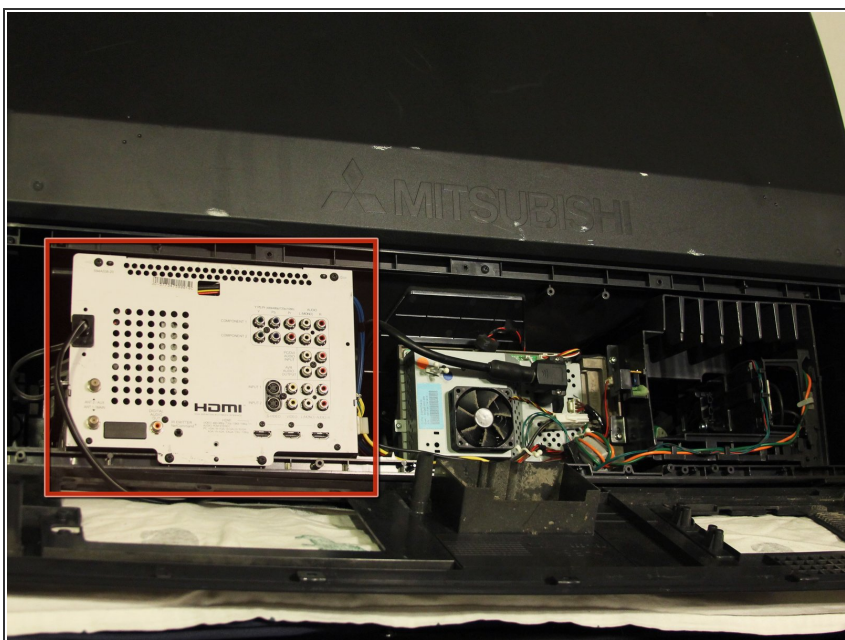
- Remove the following 8 Phillips #1 screws:
 - One 22 mm Phillips #1 in the bottom right corner of the back panel.
 - One 18 mm Phillips #1 in the top middle of the back panel.
 - Six 18 mm Phillips #1 in the rest of the back panel.

Step 6



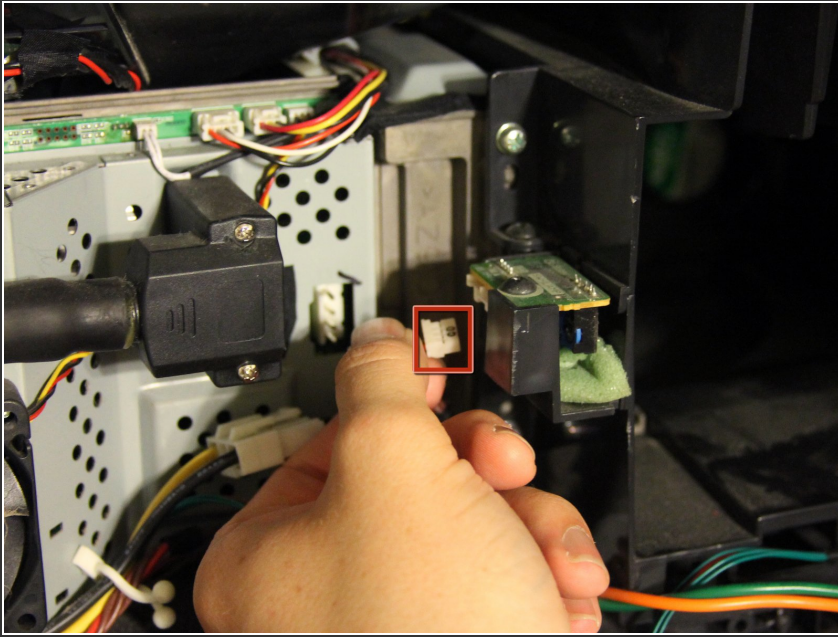
- Pull the back panel off of the television by gripping the sides and rotating it down.

Step 7 — Input/Output Board



- Removing the back panel exposes the input/output board cover plate.

Step 8



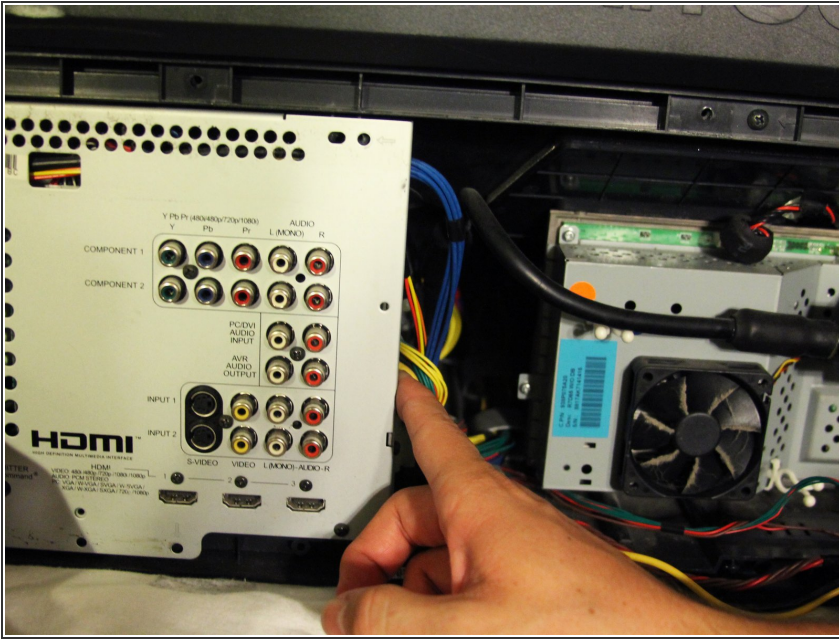
- Disconnect the back panel detection sensor by pressing down the white tab and pulling out the connection.

Step 9



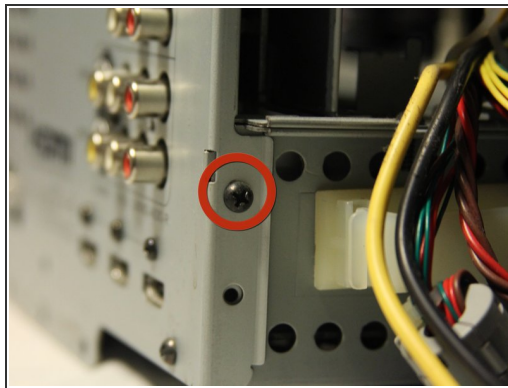
- Remove the four 10 mm black Phillips #1 screws with fine thread that attach the protective case to the TV.

Step 10



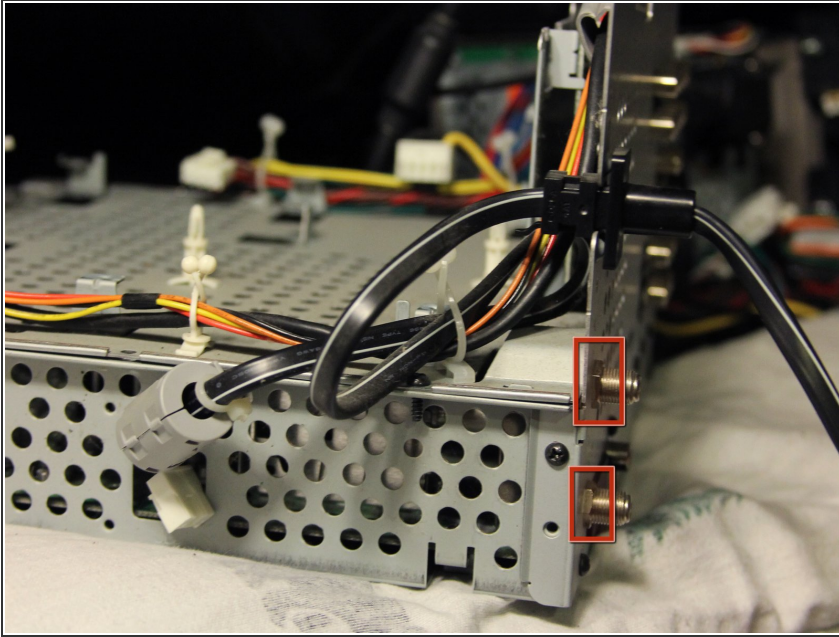
- Undo the white cable clasp holding the wires together.
- Remove the wires from the cable organizer by carefully twisting the white loops and removing the wires from the clasp.

Step 11



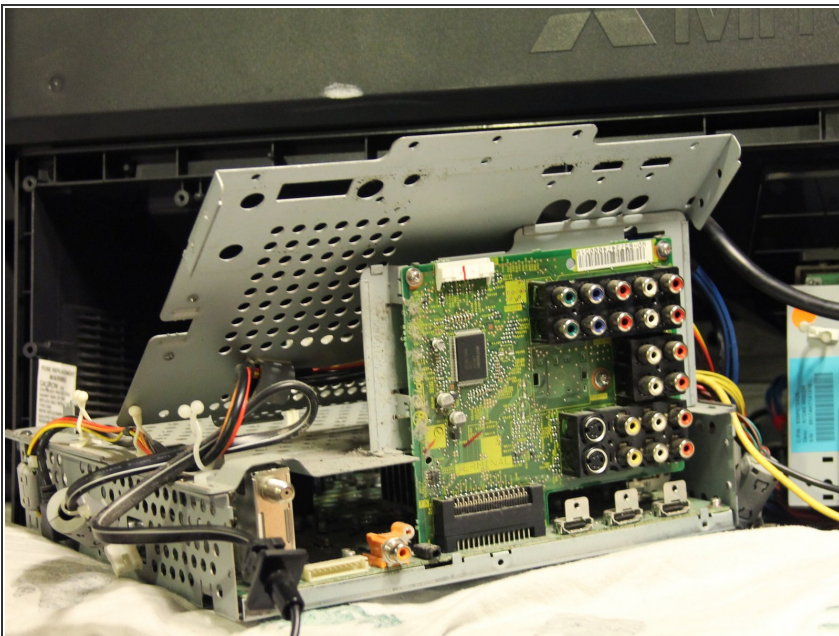
- Remove the following 11 screws from input/output panel.
 - Eight 12 mm Phillips #1 (one screw on each side and six screws on the front panel).
 - Three 10 mm black, fine thread Phillips #0 screws above the HDMI ports.

Step 12



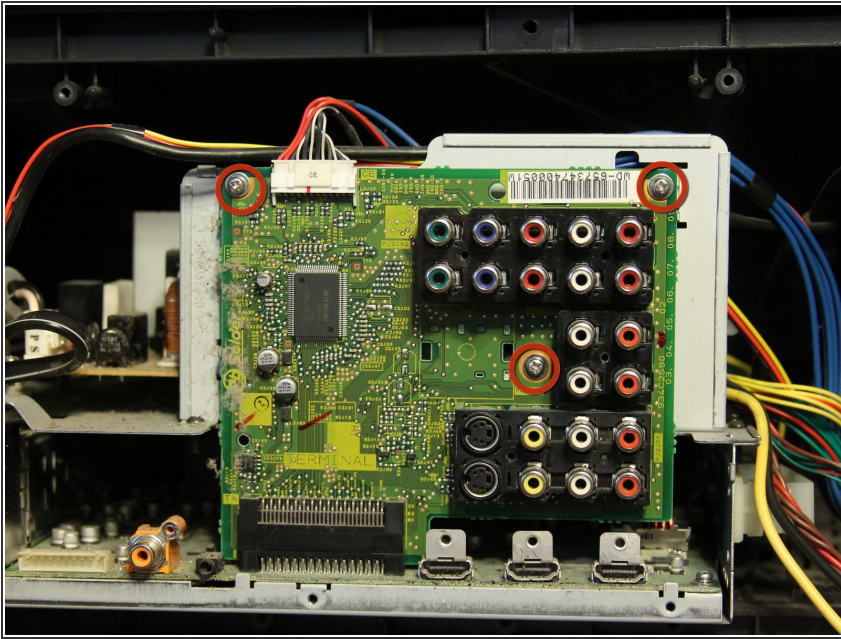
- Use pliers to grasp the two washers around the coaxial inputs and rotate counterclockwise until they are removed.
- ⓘ The washers are the flat silver pieces that twist around the silver cylindrical elements (these are the coaxial inputs).

Step 13



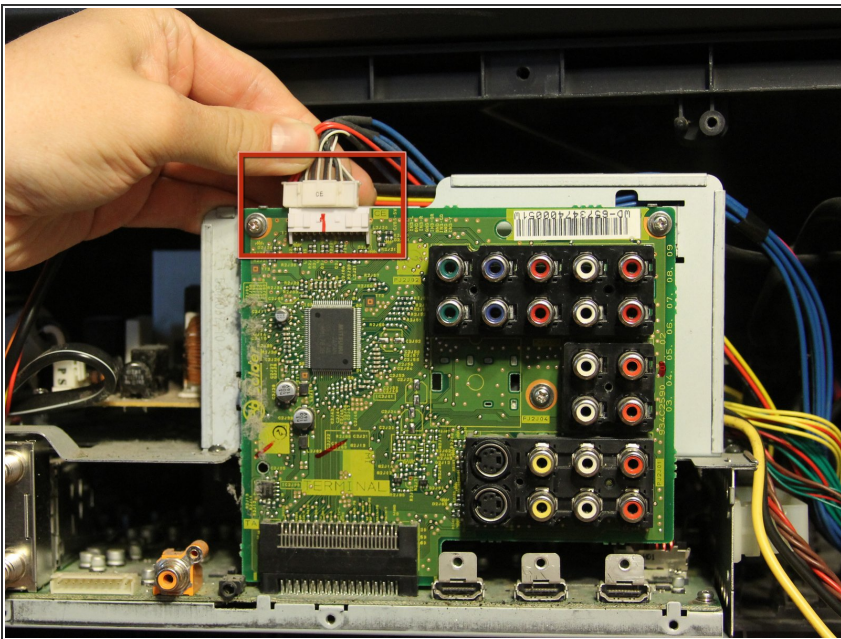
- Pull the front cover plate straight back off and move it out of the way, exposing the input/output/ board.
- ⚠ There are still connections on the input/output plate, so be careful.

Step 14



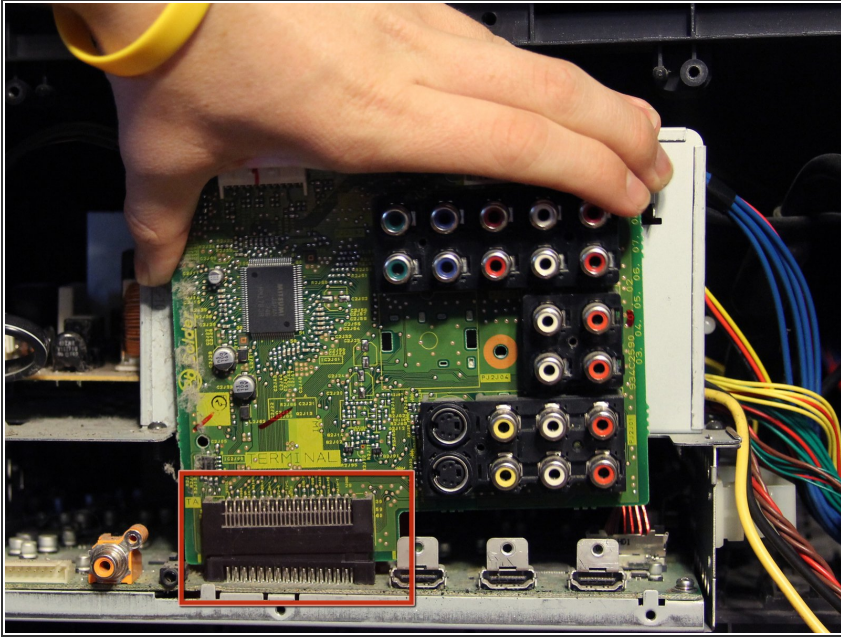
- Remove three 10 mm silver, coarse thread Phillips #1 screws holding the input/output board to the case.

Step 15



- Remove the connection to the front input/output wires by pressing down the white tab and gently pulling up.

Step 16



- Disconnect the input/output board from the port in the main board by gently lifting upward and pull it out from the casing.

To reassemble your device, follow these instructions in reverse order.