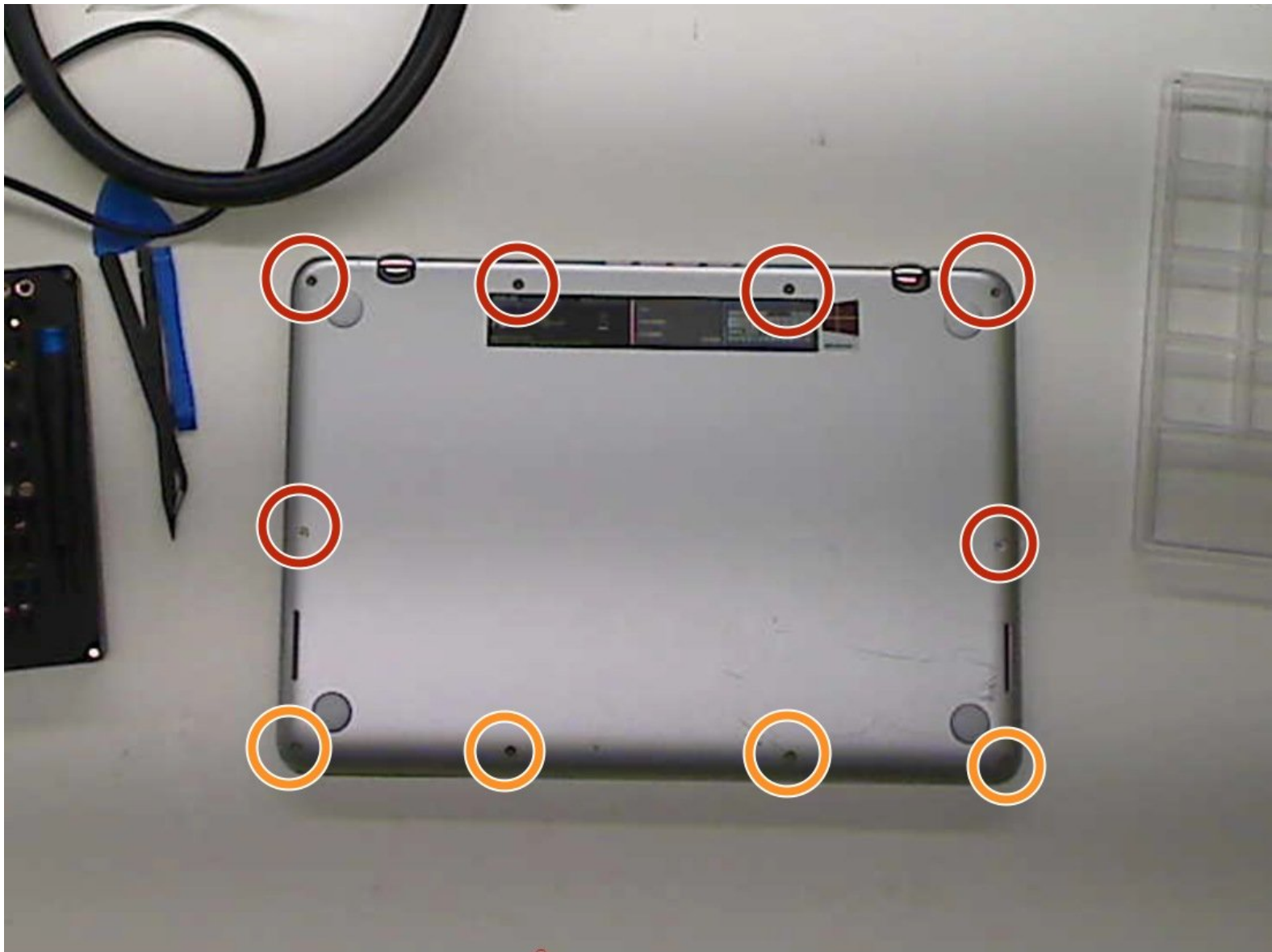




Asus Q304UA Motherboard Replacement

This is a guide on how to replace your Asus Q304UA laptop motherboard.

Written By: Ben Meinhart

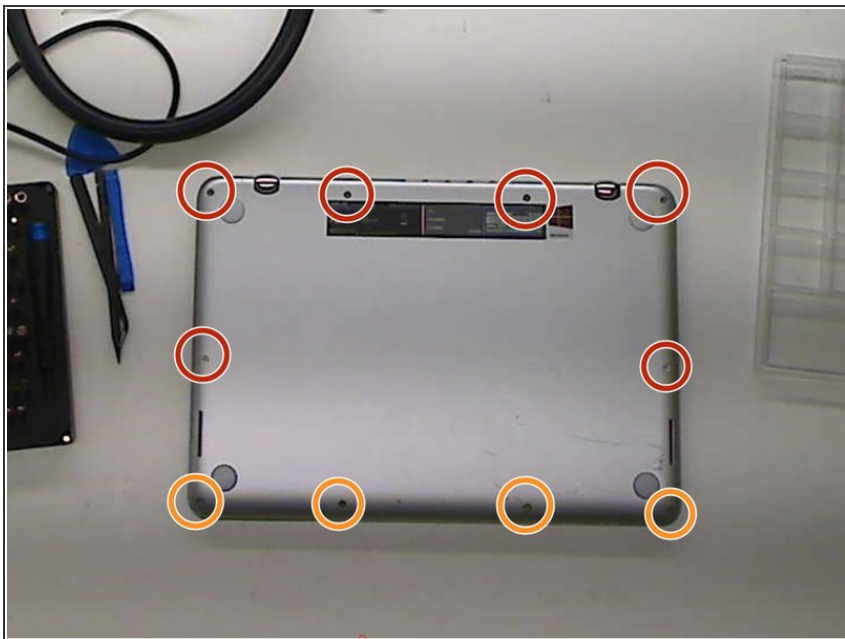




TOOLS:

- [Pro Tech Toolkit](#) (1)
-

Step 1 — Remove the bottom cover



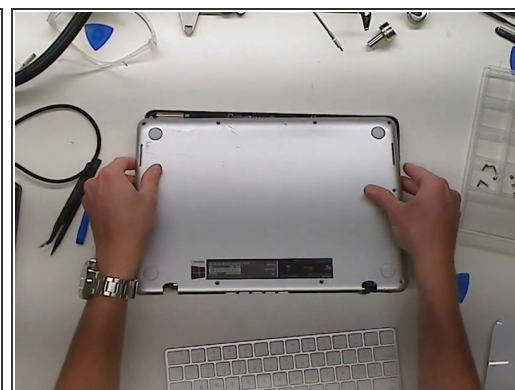
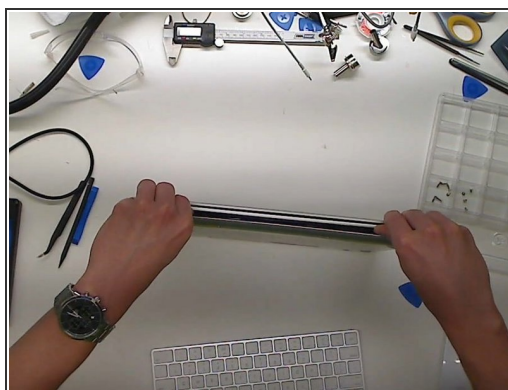
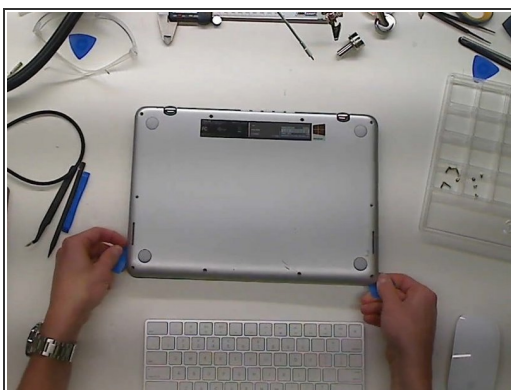
- Remove ten Phillips #0 screws that secure the plastic bottom cover to the chassis.

- Six 9.6 mm screws

- Four 4.6 mm screws

- ☑ Throughout this guide, [keep careful track of your screws](#) so that each one goes back where it came from during reassembly. Installing a screw in the wrong place can cause permanent damage.

Step 2



- Use a plastic pry tool to get in-between the bottom cover and the lower case assembly.

⚠ Be careful not separate the cover too violently or you will risk breaking the plastic clips that are on the bottom cover.

Step 3 — Disconnect the battery

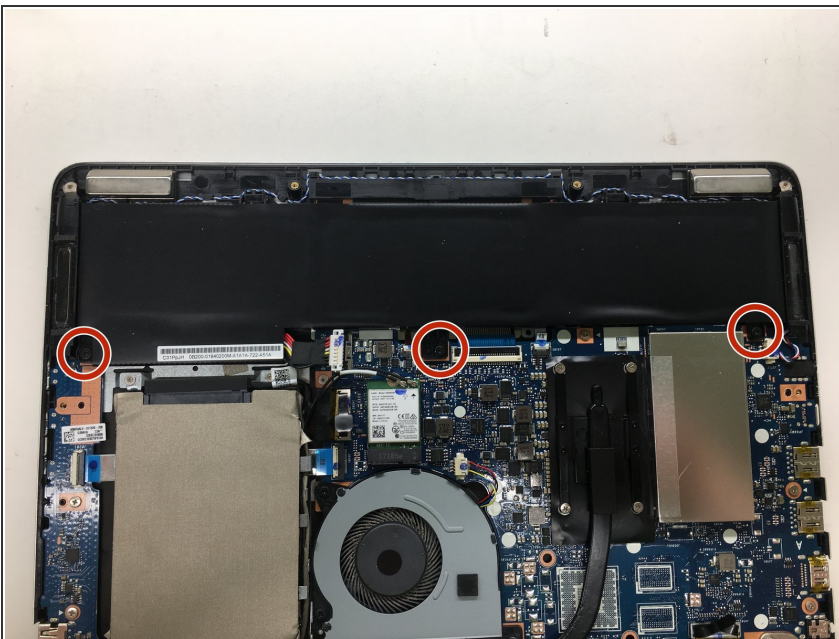


- Push metal bracket away from battery connector.
- Use a spudger to push the battery connection straight up.

⚠ If you pry too hard, or attempt to disconnect the battery with the metal bracket still in place, you risk pulling the connector off of the motherboard.

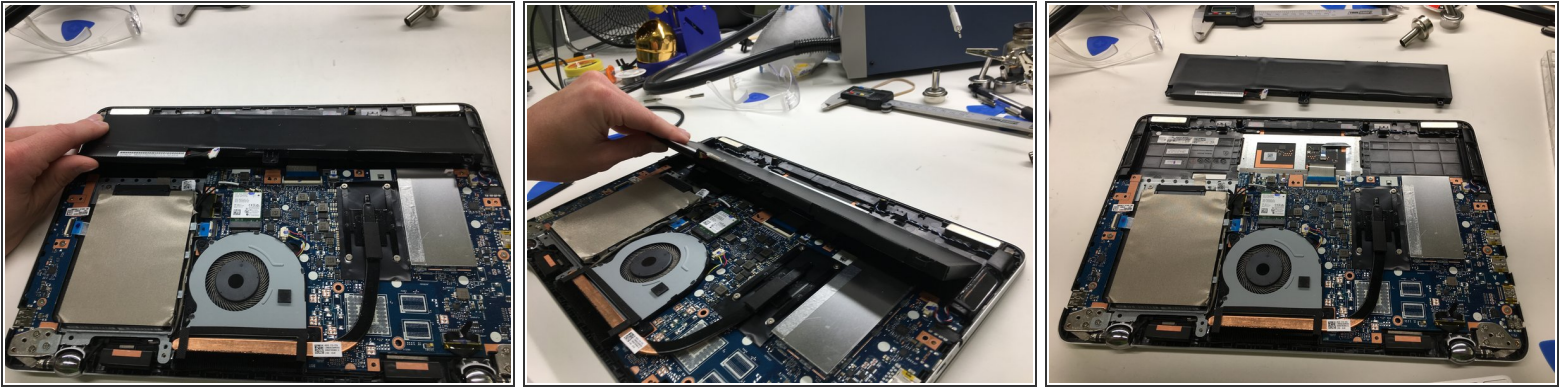
☑ Make sure the computer is powered off before removing the battery.

Step 4 — Remove the battery



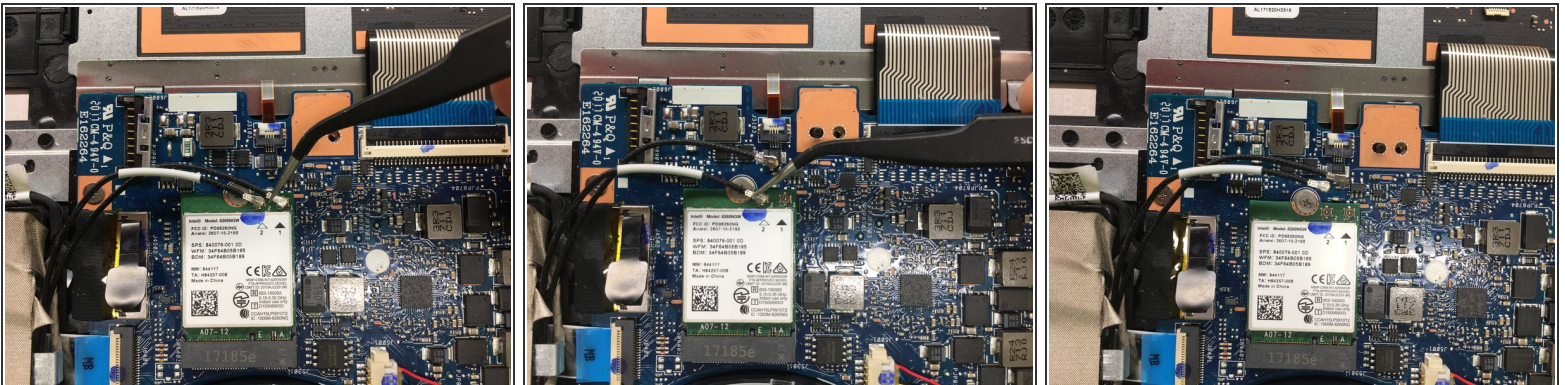
- Remove the Phillips #0 screws that secure the battery to the lower case assembly
 - Three 4.7 mm screws.

Step 5



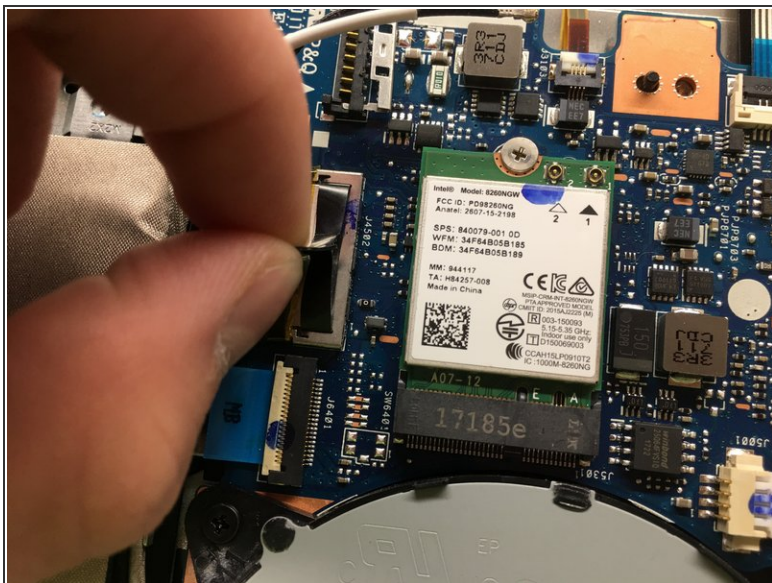
- Tilt battery up from the side closest to the motherboard
- Pull the battery out of the chassis away from the two plastic retainers near the front of the laptop.

Step 6 — Disconnect RF cables



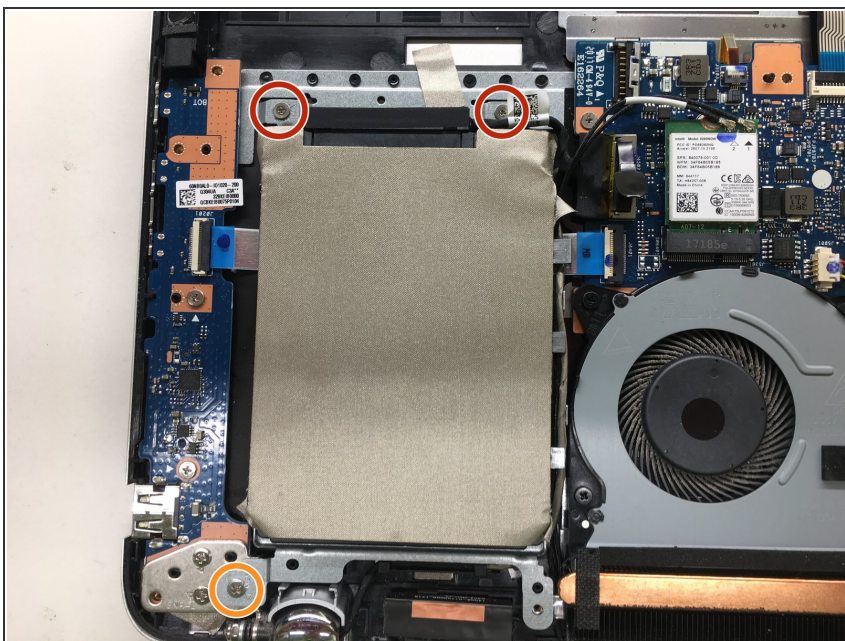
- Disconnect the Wifi/Bluetooth RF cables from the wireless card.
- ⚠ Pull the RF cables by the metal connector, not by the rubber shielding. This avoids damaging the connector and the cable.

Step 7 — Remove the drive



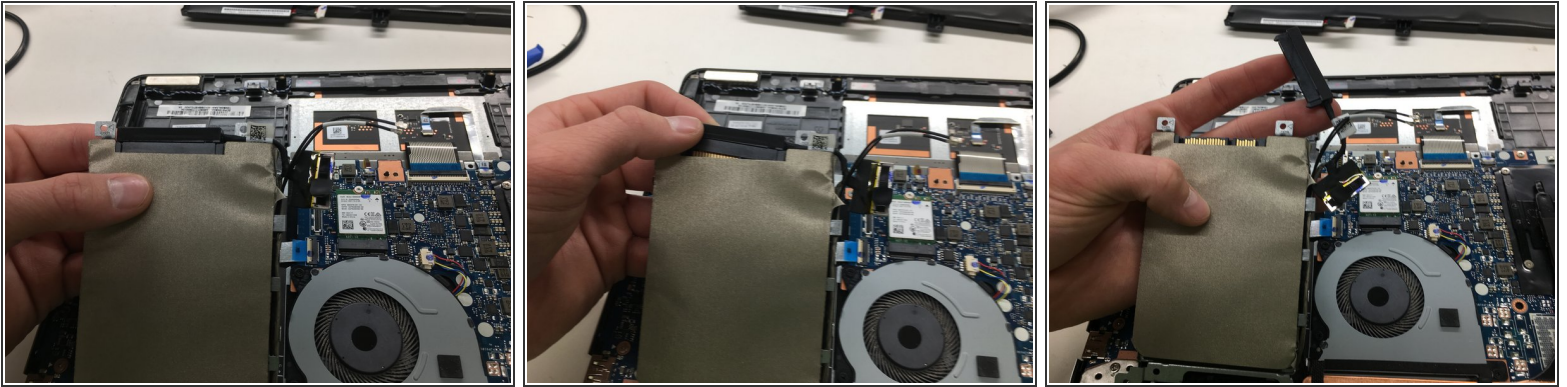
- Pull straight up to disconnect the SATA combo cable from the motherboard.

Step 8



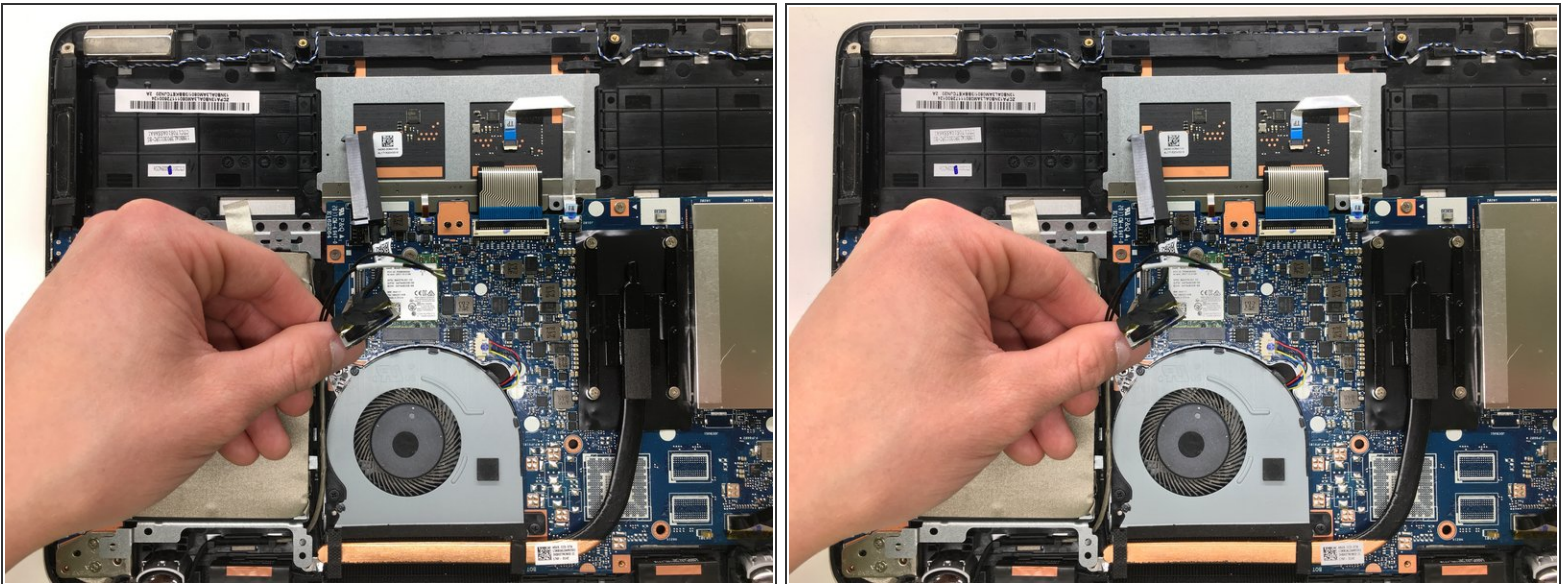
- Remove three Phillips #0 that secure the hard drive bracket to the chassis, of the following lengths:
 - Two 2.3 mm screws
 - One 5.6 mm screw

Step 9



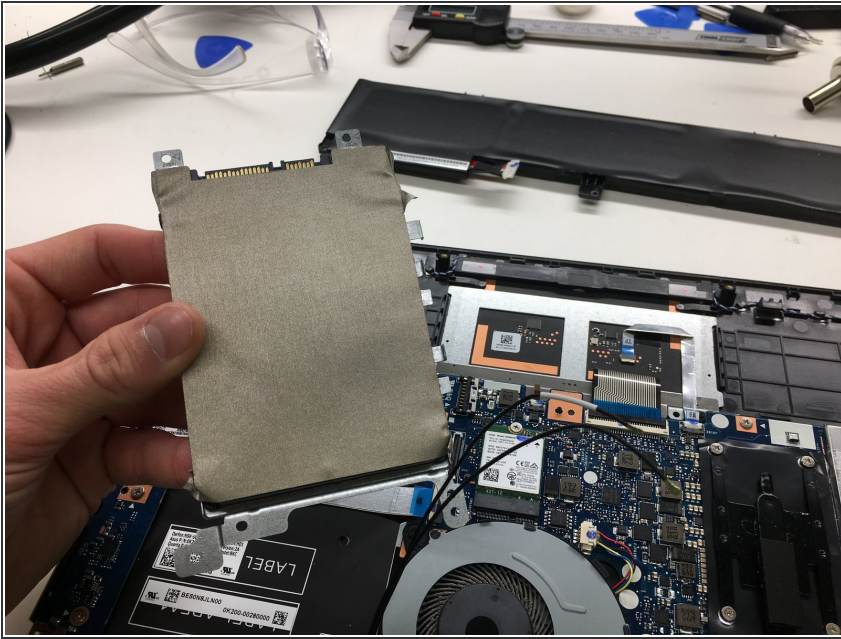
- Tilt the drive up slightly by the connector
- Remove the SATA combo connector

Step 10



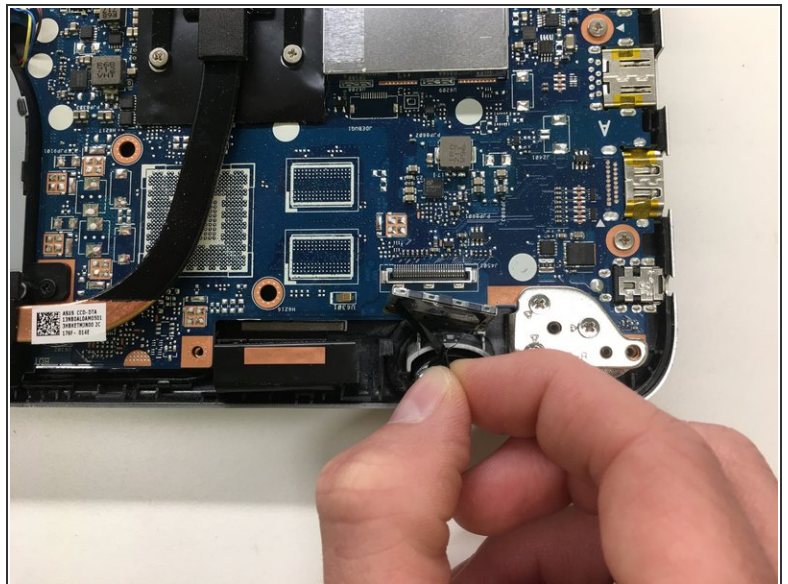
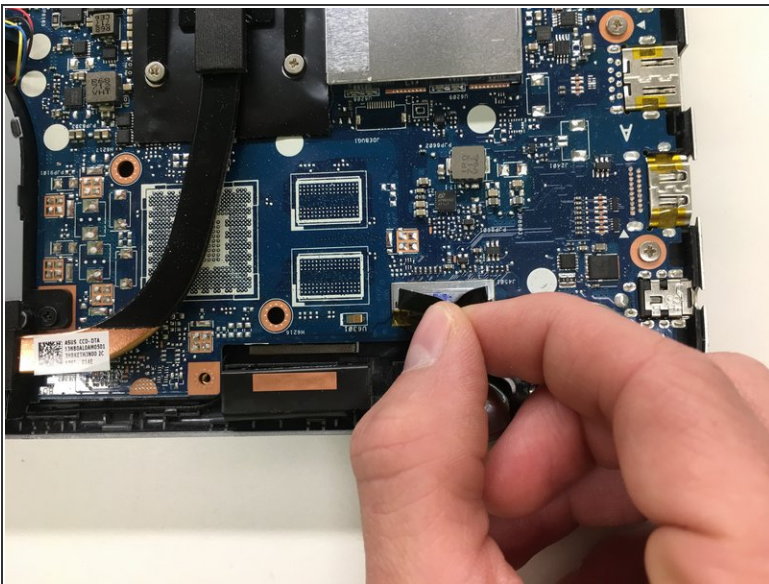
- De-route the SATA and RF cables from the side of the drive bay.

Step 11



- Remove the drive from the laptop.

Step 12 — Motherboard Assembly



- Pull straight up to disconnect the display cable

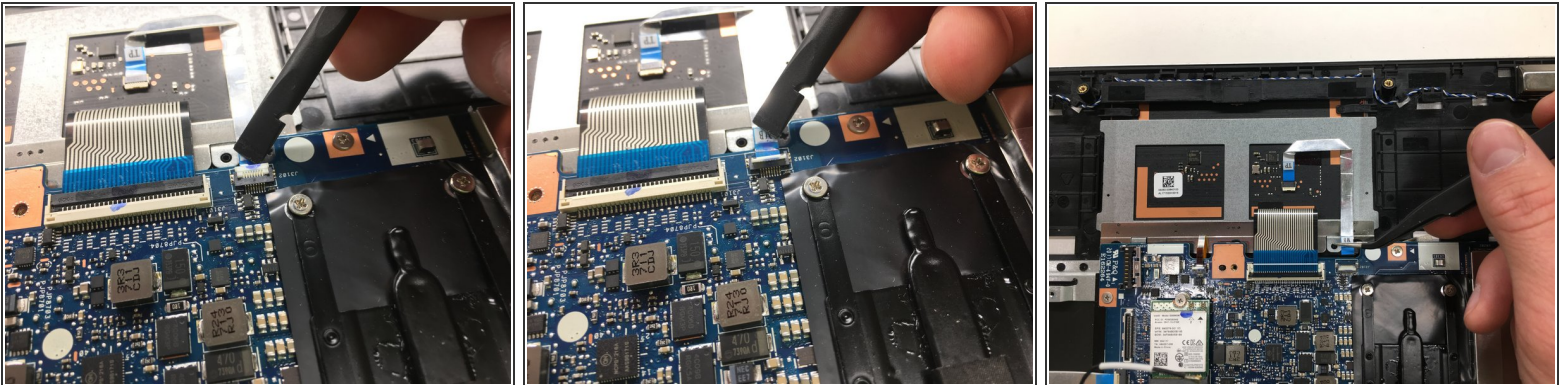
Step 13



- Use a Spudger to push the left speaker cable out the connector.

⚠ Do not pull up on this connector. Only pull directly away from the connector.

Step 14

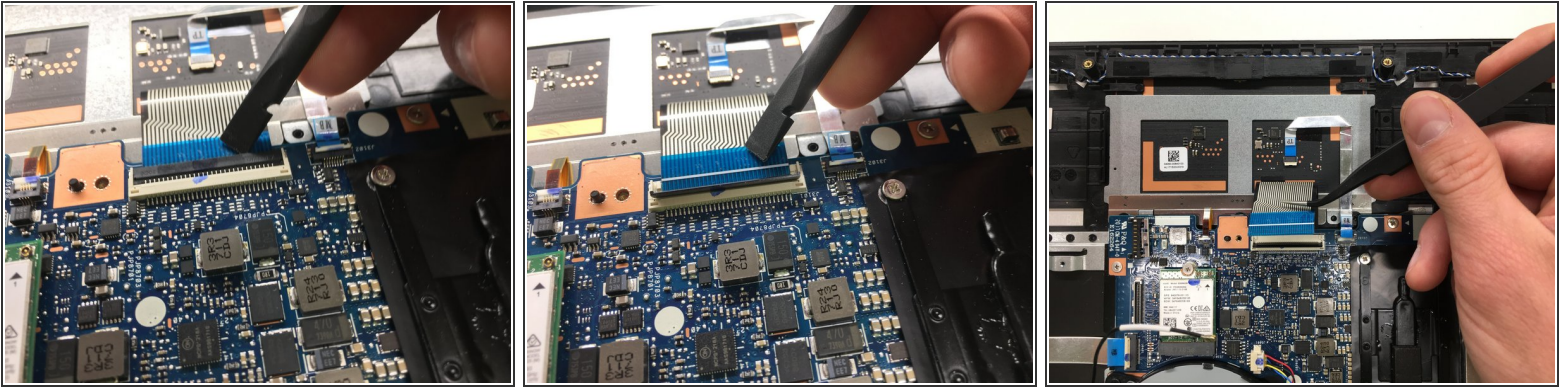


- Use a spudger to flip up the retaining flap on the trackpad ribbon cable ZIF socket.

⚠ Be sure you are prying up on the hinged retaining flap, **not** the socket itself.

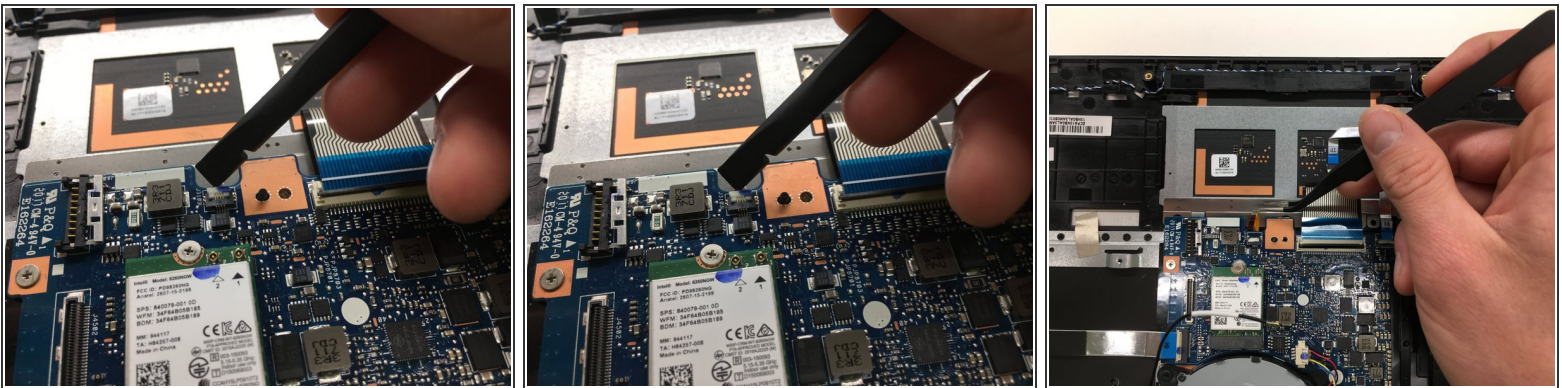
- Use tweezers to pull the ribbon cable straight out of the ZIF socket.

Step 15



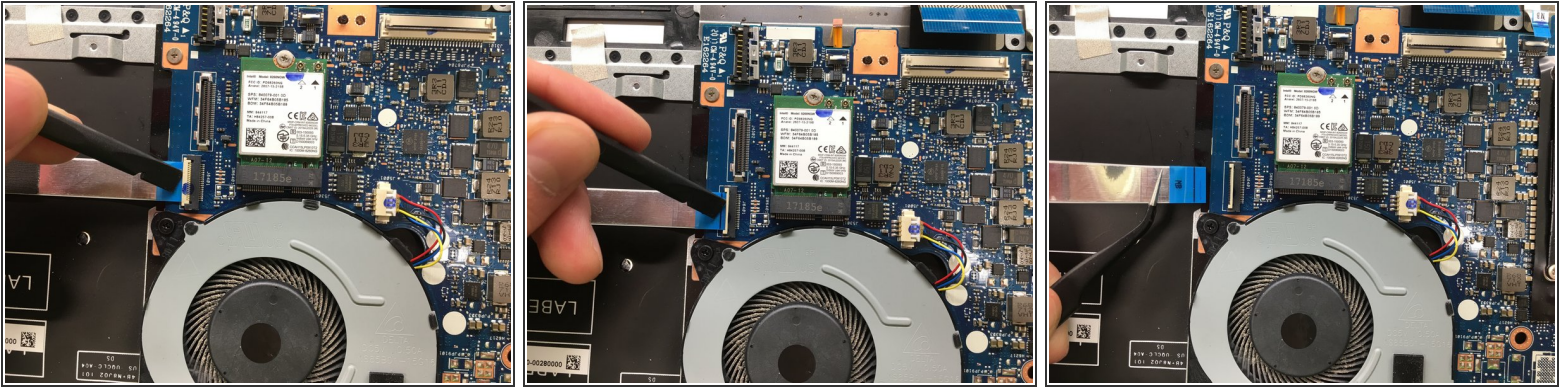
- Use the tip of a spudger to flip cup the retaining flap on the keyboard ribbon cable ZIF socket.
⚠ Be sure you are prying up on the hinged retaining flap, **not** the socket itself.
- Use tweezers to remove the ribbon cable from the socket.

Step 16



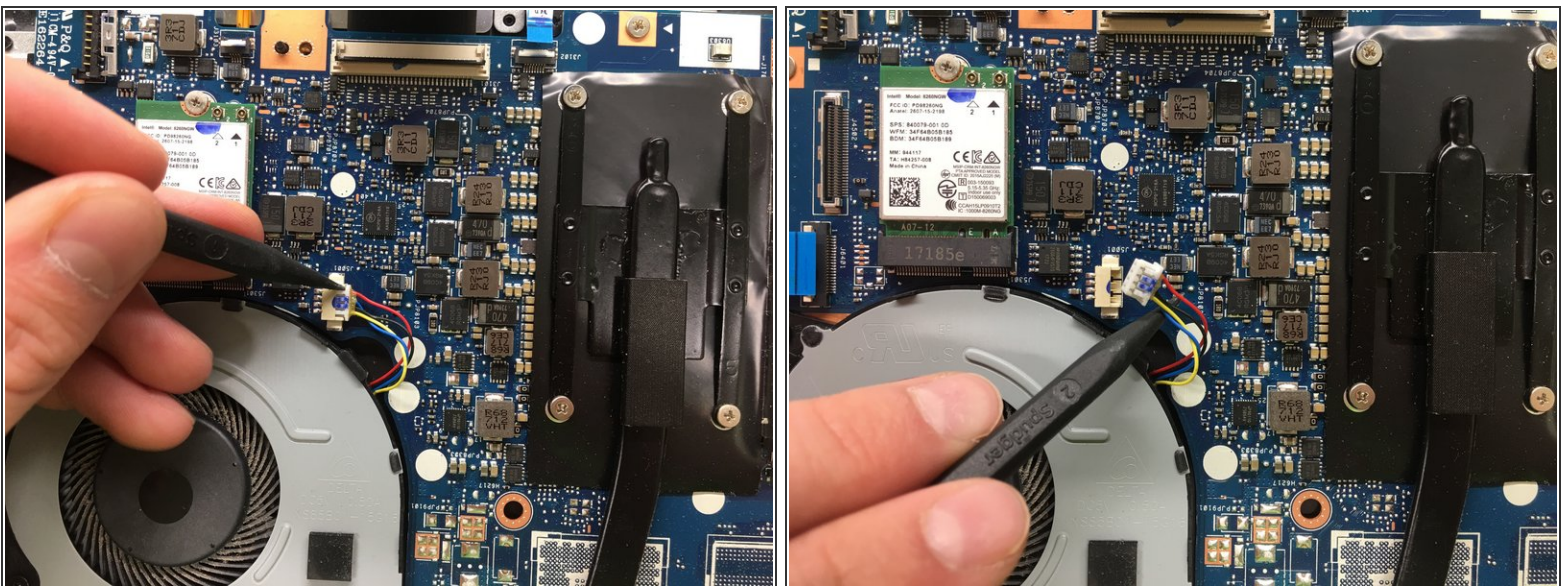
- Use a spudger to flip up the retaining flap on the ribbon cable ZIF socket.
⚠ Be sure you are prying up on the hinged retaining flap, **not** the socket itself.
- Use tweezers pull the ribbon cable out of the ZIF socket.

Step 17



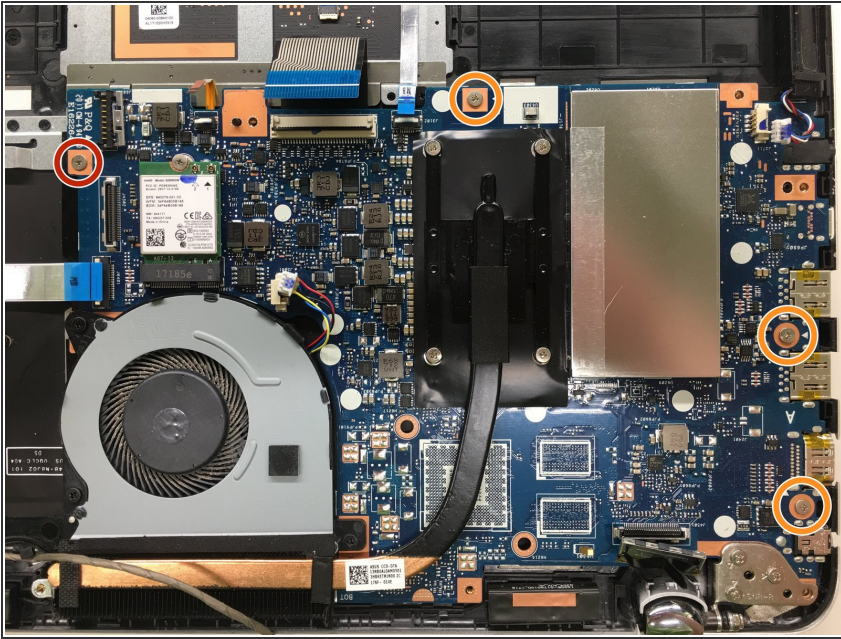
- Use the tip of a spudger to flip up the retaining flap on the daughterboard ribbon cable ZIF socket on the motherboard.
 - ⚠ Be sure you are prying up on the hinged retaining flap, **not** the socket itself.
- Use tweezers to pull the ribbon cable away from the ZIF socket

Step 18



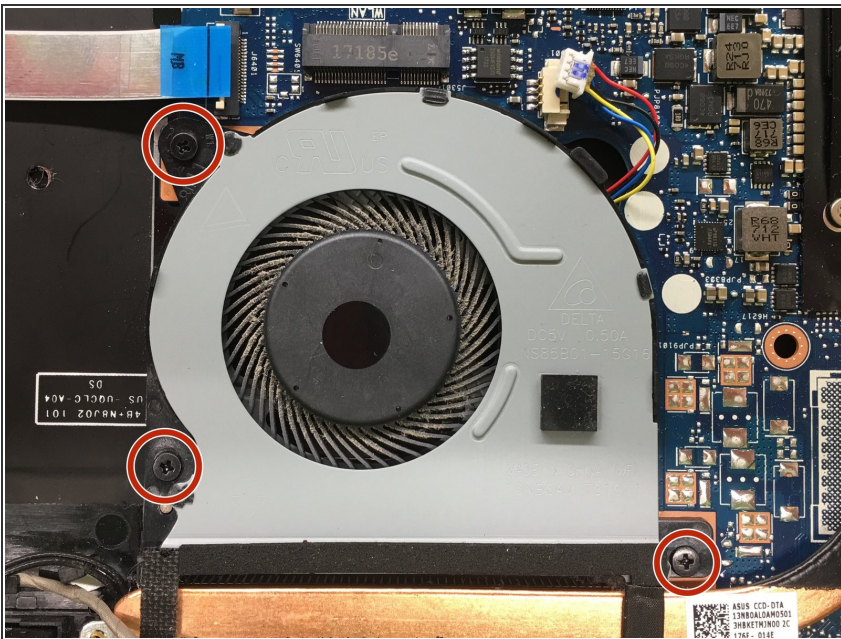
- Use the tip of spudger to push out the fan connector.
 - ⚠ Do not pull up on the connector, only pull out so to not damage the connector.

Step 19



- Remove the four Phillips screws securing the logic board to the lower case assembly.
 - One 2.3 mm screw
 - Three 3.7 mm screws

Step 20



- Remove the three Phillips screws connecting the fan to the lower case assembly.
 - Three 4.6 mm screws

Step 21



- Remove the three Phillips screws securing the left hinge to the corner of the motherboard and lower case assembly.
 - Three 5.6 mm screws
- Take a plastic pry tool and open the hinge about 75°-85°
- ⓘ You may have to open the laptop over the edge of a table and open the display in order to open the hinge.

Step 22 — Remove Motherboard



- Pull up on the corner of the motherboard and remove from the laptop.
- ⓘ Be sure to clear all of the plastic standoffs that go through the motherboard.

To reassemble your device, follow these instructions in reverse order.

****I am not responsible for any damages caused by any attempts at this repair. Use at your own risk.**