



Dell Inspiron 15 Gaming 7577 Hard Drive Replacement

In this guide, we will be showing you how to...

Written By: Terrence15

INTRODUCTION

In this guide, we will be showing you how to remove and replace the Hard Drive.



TOOLS:

- [Phillips #0 Screwdriver](#) (1)



PARTS:

- [1 TB SSD](#) (1)
- [250 GB SSD](#) (1)
- [Crucial MX500 500 GB SSD](#) (1)
- [2 TB SSD](#) (1)

Step 1 — Caution & Note

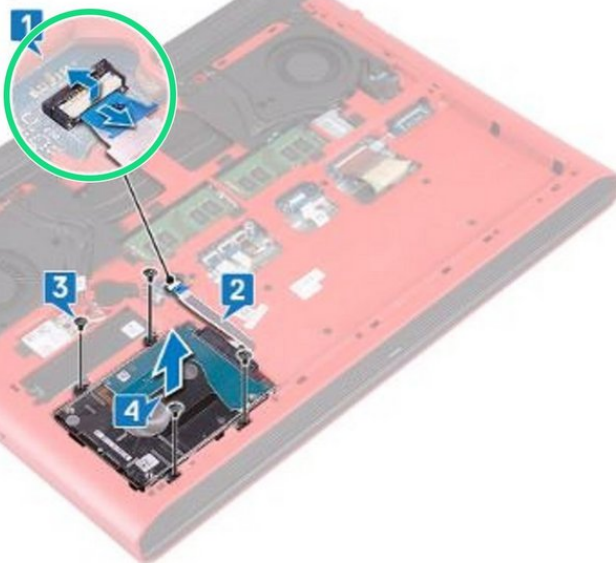


⚠ WARNING: Before working inside your computer, read the safety information that shipped with your computer and follow the steps in [Before Working Inside Your Computer](#). After working inside your computer, follow the instructions in [After Working Inside Your Computer](#).

⚠ CAUTION: Hard drives are fragile. Exercise care when handling the hard drive.

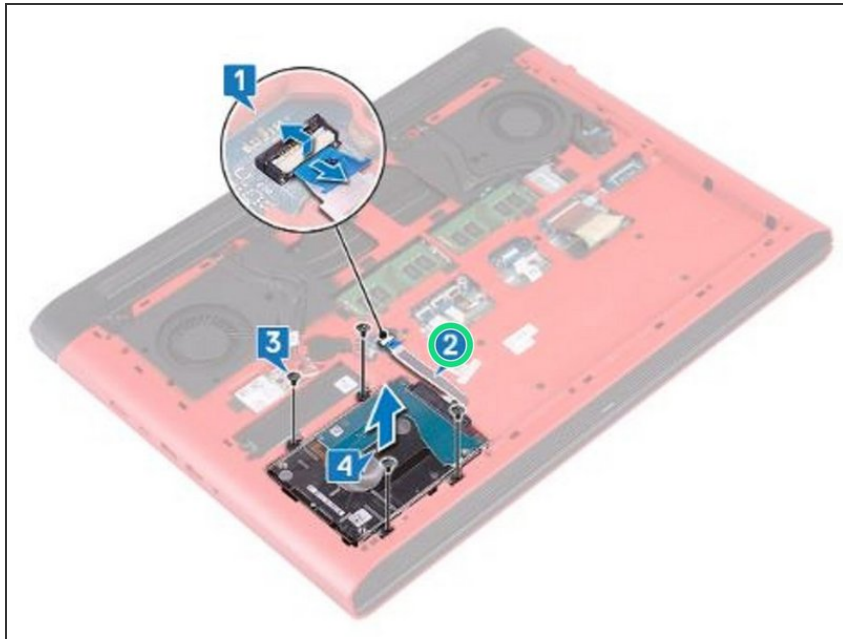
i NOTE: The latch on the hard-drive locking connector is fragile. Pulling the latch forcefully may damage the hard-drive locking connector. Exercise care when handling the latch on the hard-drive locking connector.

Step 2 — Disconnecting the Hard Drive Cable



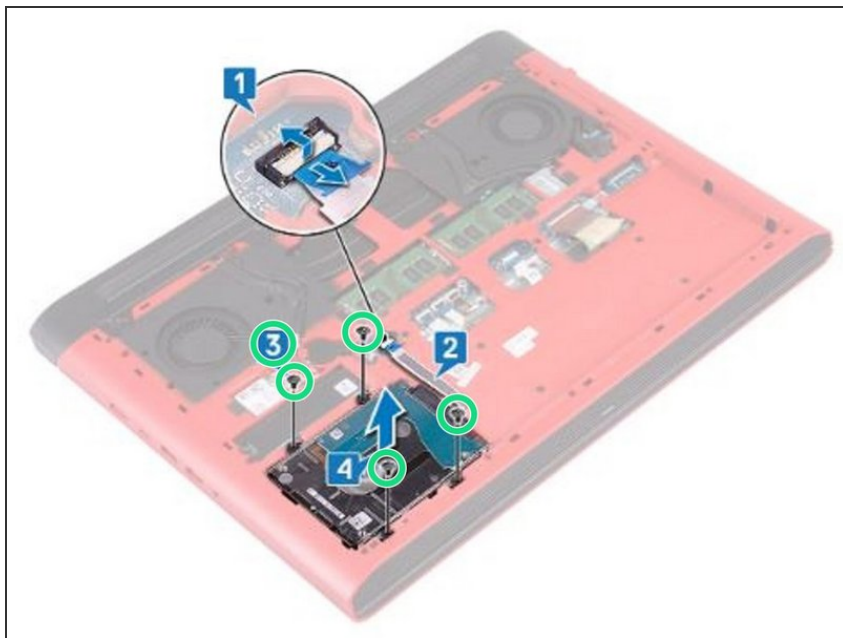
- Open the latch and disconnect the hard-drive cable from the system board.

Step 3 — Peeling the Hard Drive Cable



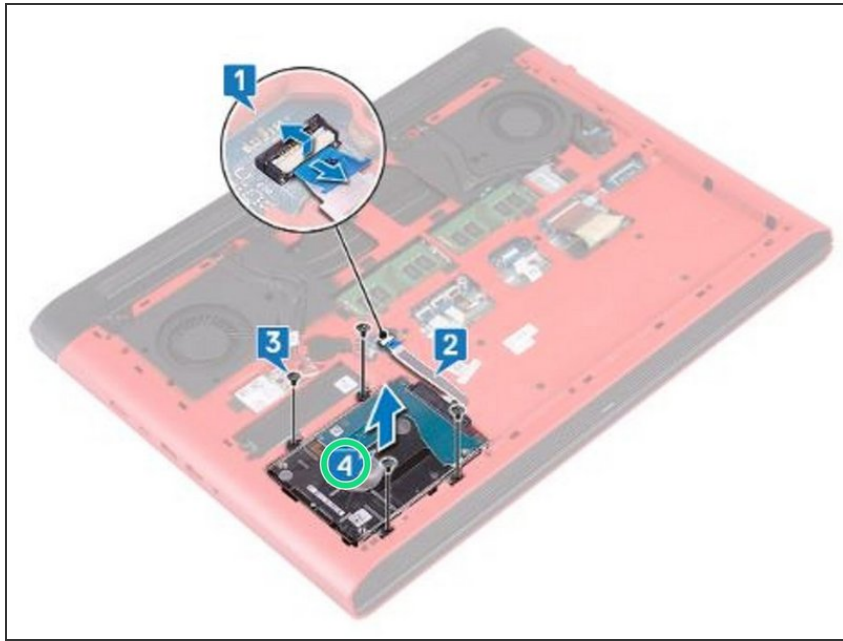
- Peel off the hard-drive cable from the computer base.

Step 4 — Remove the Screws



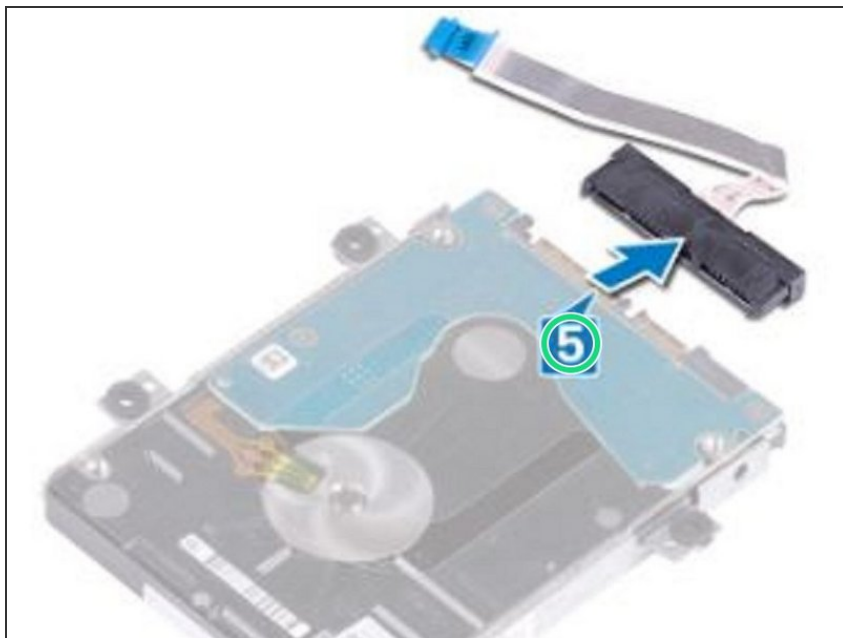
- Remove the four screws (M2.5x3) that secure the hard-drive assembly to the computer base.

Step 5 — Lifting the Hard-Drive Assembly



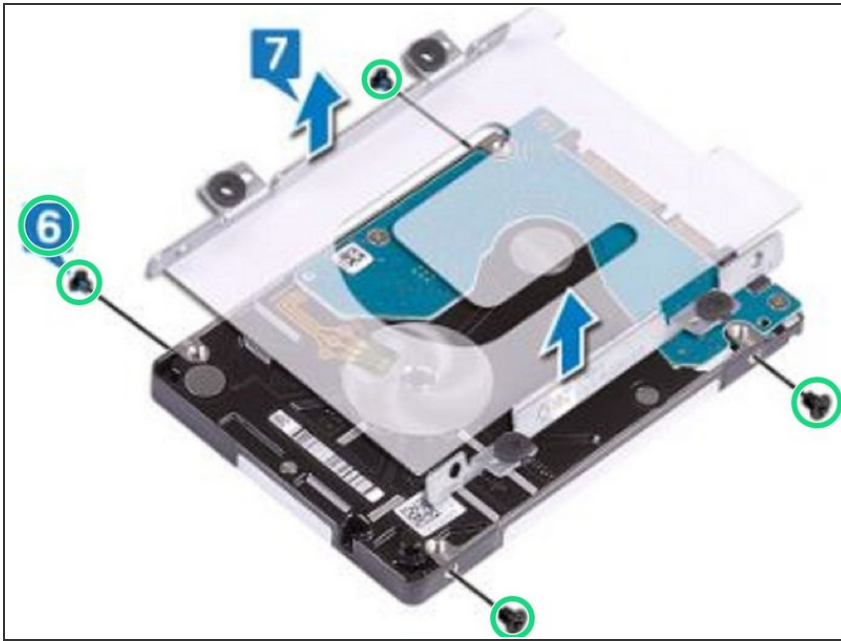
- Lift the hard-drive assembly, along with its cable, off the computer base.

Step 6 — Disconnect the Inteposer



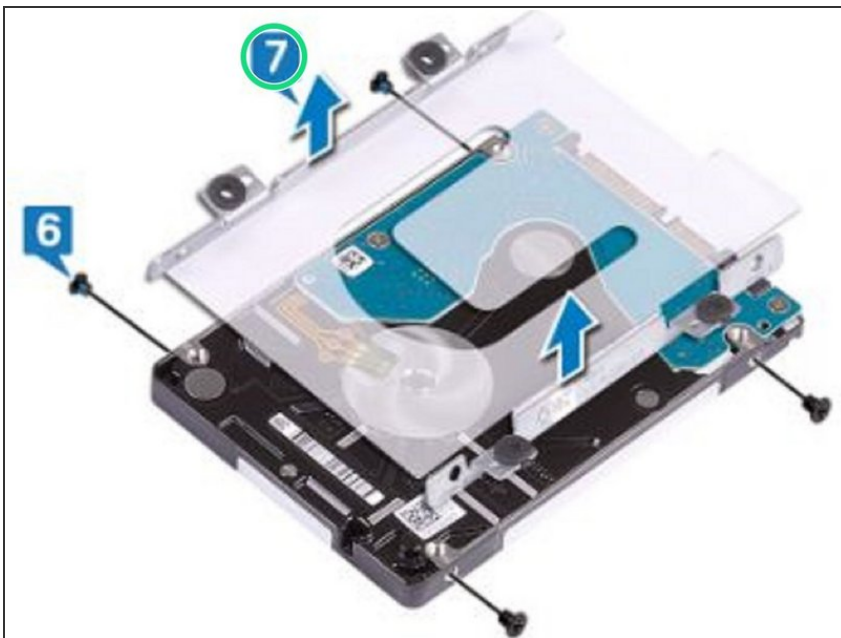
- Disconnect the interposer from the hard-drive assembly.

Step 7 — Remove the Screws



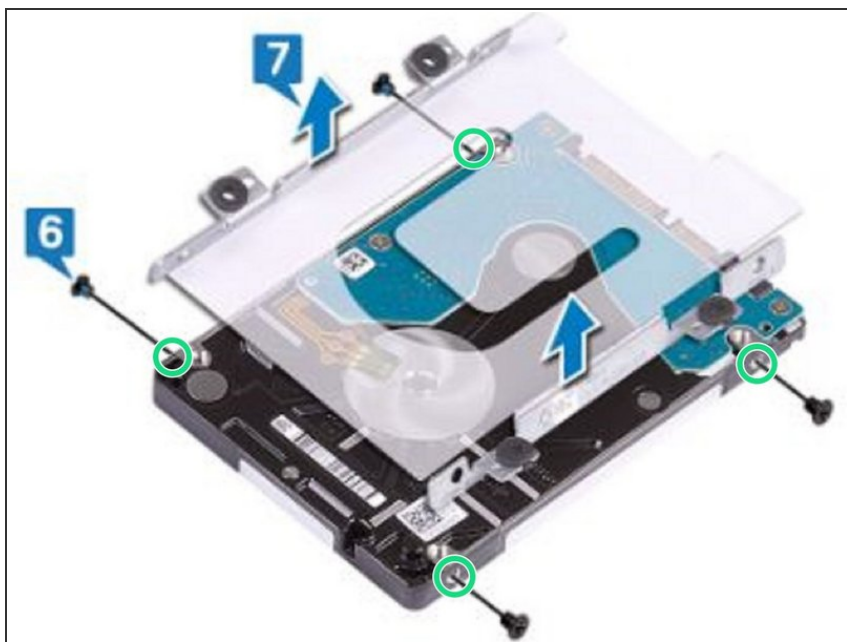
- Remove the four screws (M3x3) that secure the hard-drive bracket to the hard drive.

Step 8 — Lifting the Hard Drive Bracket



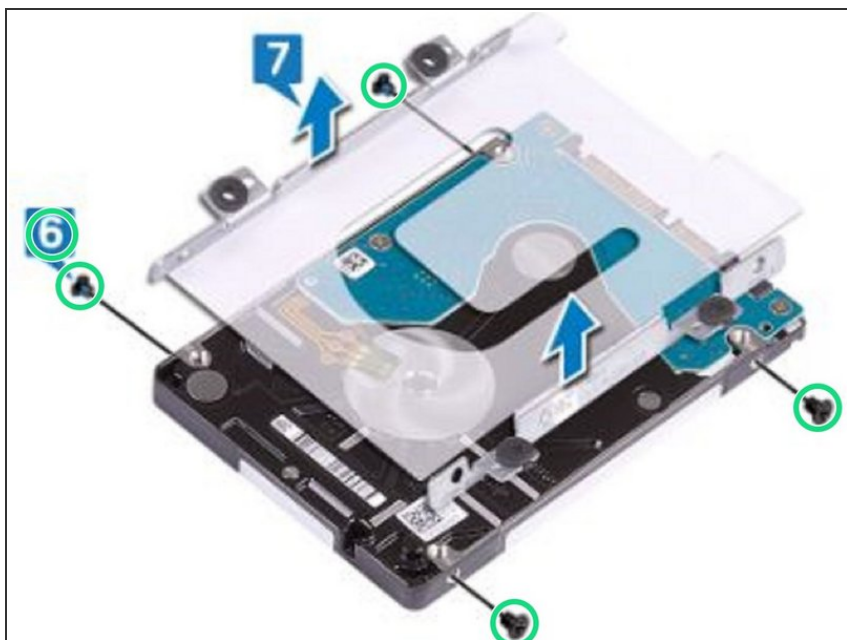
- Lift the hard-drive bracket off the hard drive.

Step 9 — Align the Screw Holes



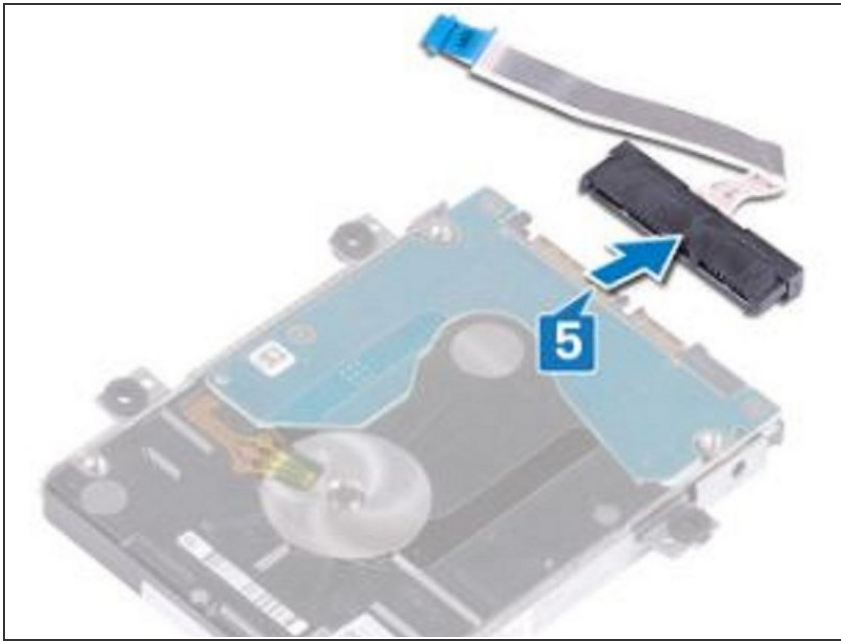
- Align the screw holes on the hard-drive bracket with the screw holes on the **NEW** hard drive.

Step 10 — Replace the Screws



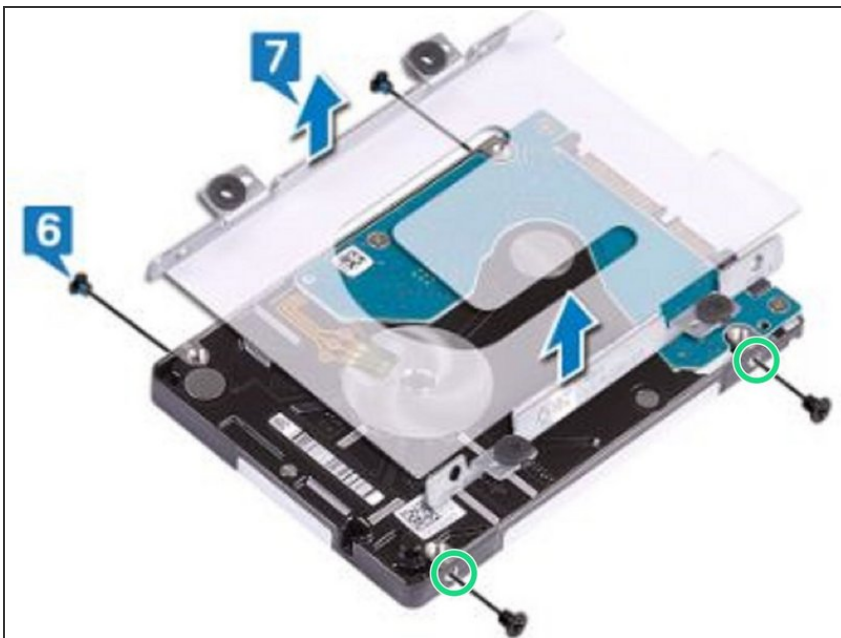
- Replace the four screws (M3x3) that secure the hard-drive bracket to the hard drive.

Step 11 — Connect the Interposer



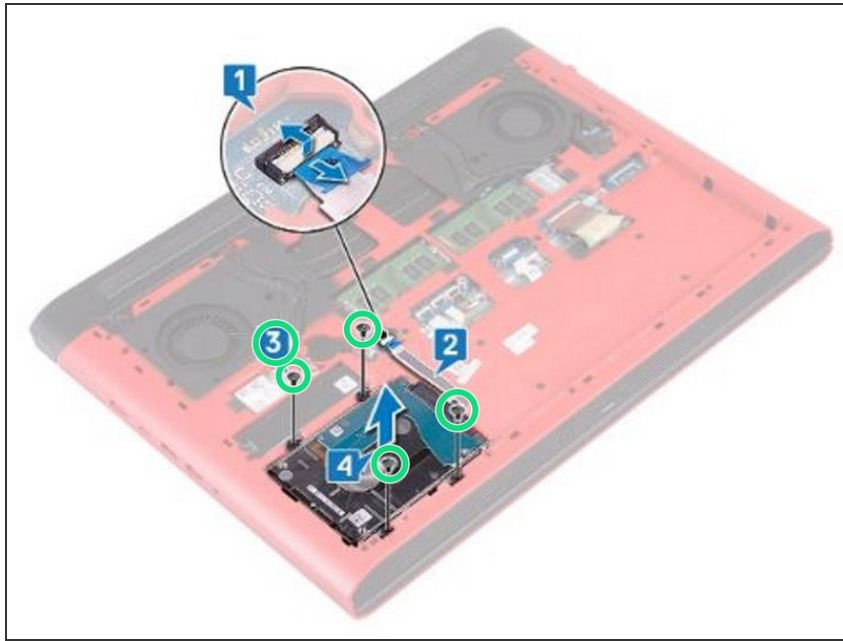
- Connect the interposer to the hard-drive assembly.

Step 12 — Align the Screw Holes



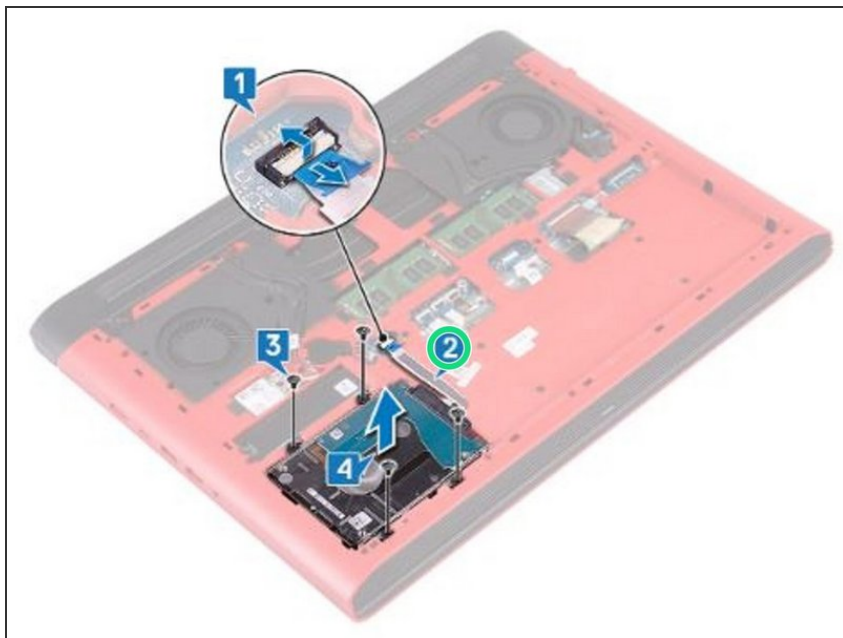
- Align the screw holes on the hard-drive assembly with the screw holes on the computer base.

Step 13 — Replace the Screws



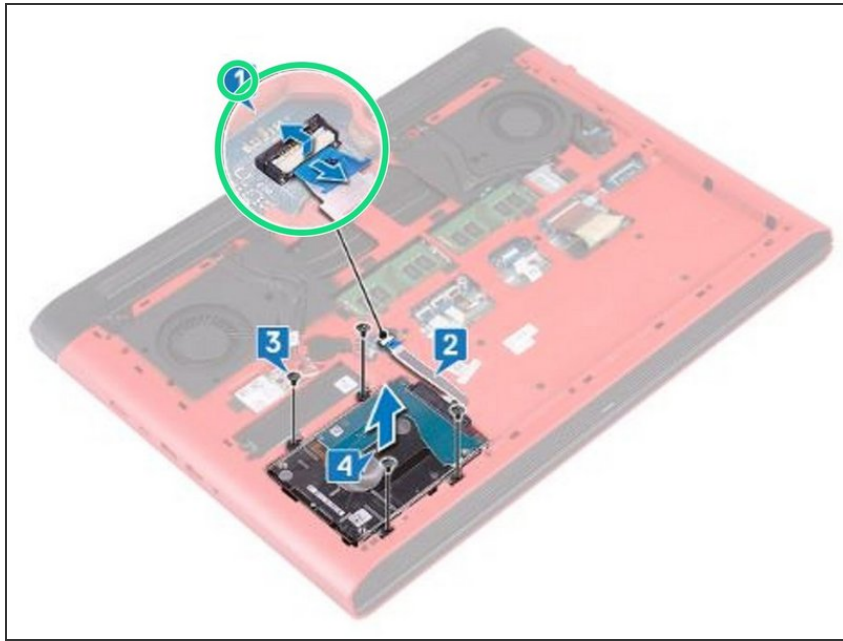
- Replace the four screws (M2.5x3) that secure the hard-drive assembly to the computer base.

Step 14 — Adhering the Hard Drive Cable



- Adhere the hard-drive cable to the computer base.

Step 15 — Sliding the Hard Drive Cable



- Slide the hard-drive cable into the connector on the system board and close the latch to secure the hard-drive cable.