



# INTRODUCTION

This guide explains how to remove and replace the Liquid Crystal Display (LCD), which is also called the monitor or screen.

---

## TOOLS:

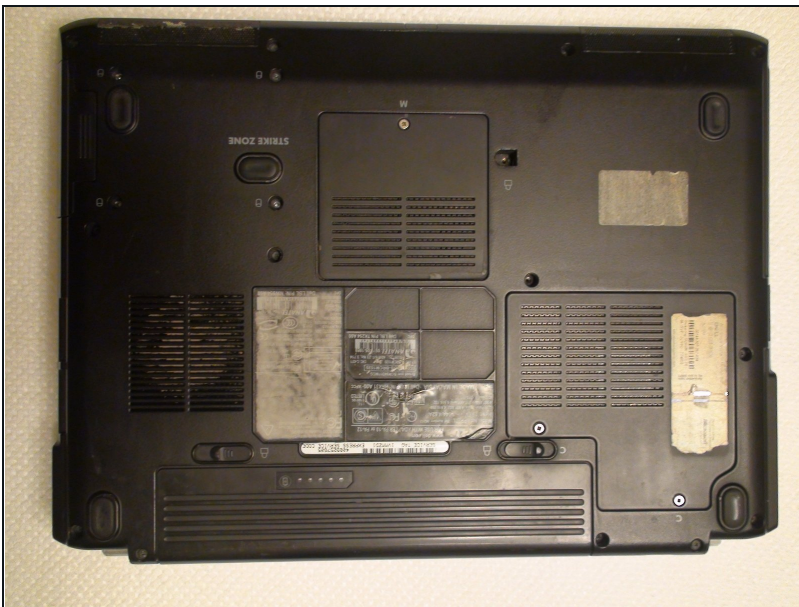
[Phillips #1 Screwdriver](#) (1)

[Tweezers](#) (1)

[iFixit Opening Tool](#) (1)

---

## Step 1 — Battery



- Rotate the laptop so its bottom is facing up.

## Step 2



- Identify the lock mechanisms holding the battery in place.
- Slide each button outward with your fingers to disengage the battery.
- Pull the battery off with your hand to separate it from the laptop.

## Step 3 — Keyboard



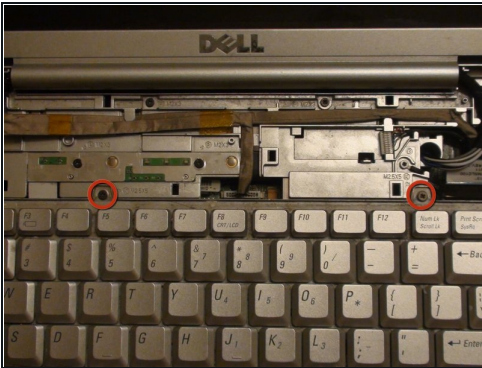
- Find the two small indentations of the sides of the panel covering the power button.
- Pry up both sides of the panel by sticking the plastic opener tool in each indentation and prying up.

## Step 4



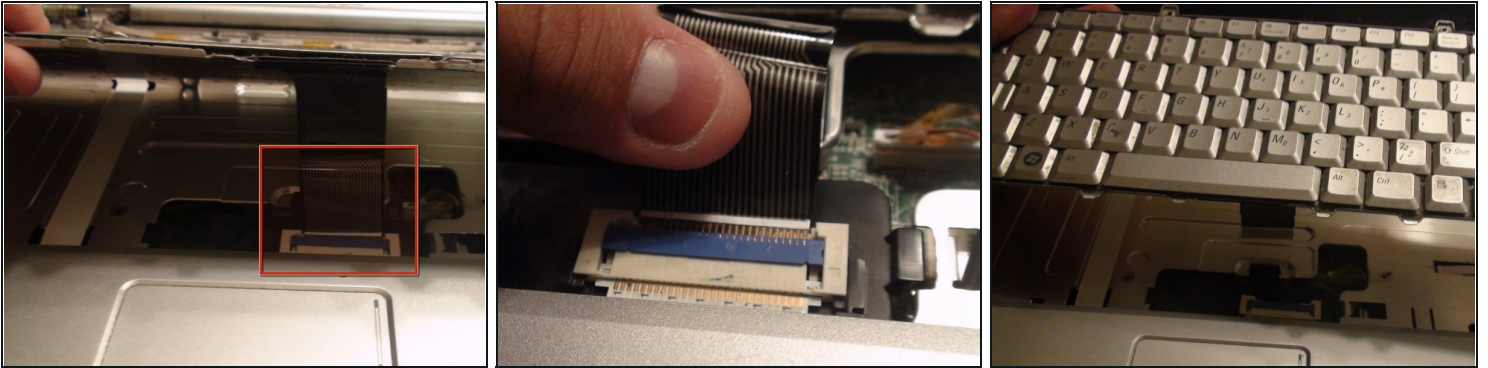
- Now that the panel is loose simply pull the panel off with your hand.

## Step 5



- Locate the two 5 mm Phillips #1 screws holding down the keyboard that were underneath the panel.
- Remove these screws with a Phillips #1 screwdriver.
- With the screws removed pull the keyboard up with your hand.

## Step 6



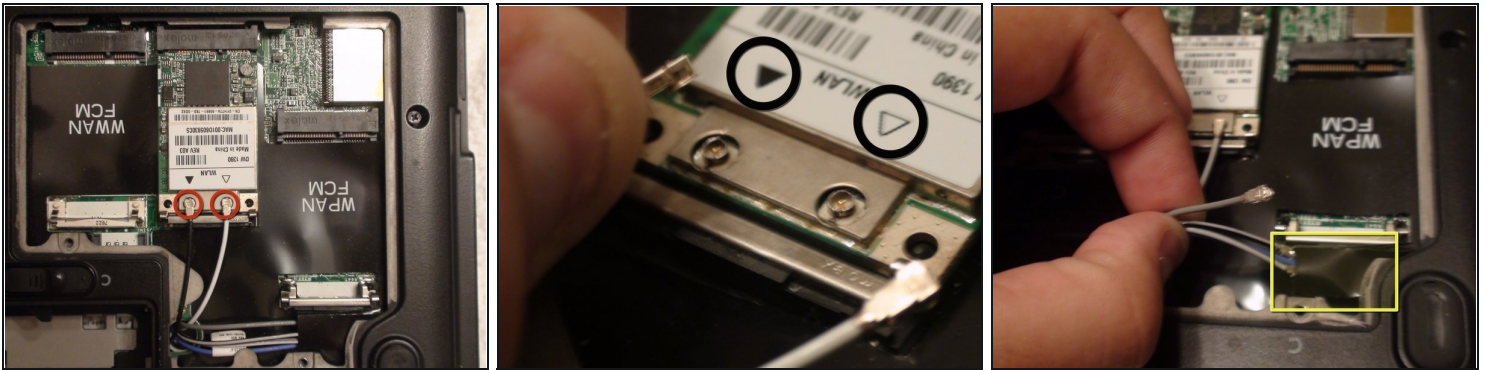
- Locate the connector that links the keyboard to the laptop.
- Gently pull the connector toward the screen of the laptop with your fingers to disconnect it.

## Step 7 — Display Assembly



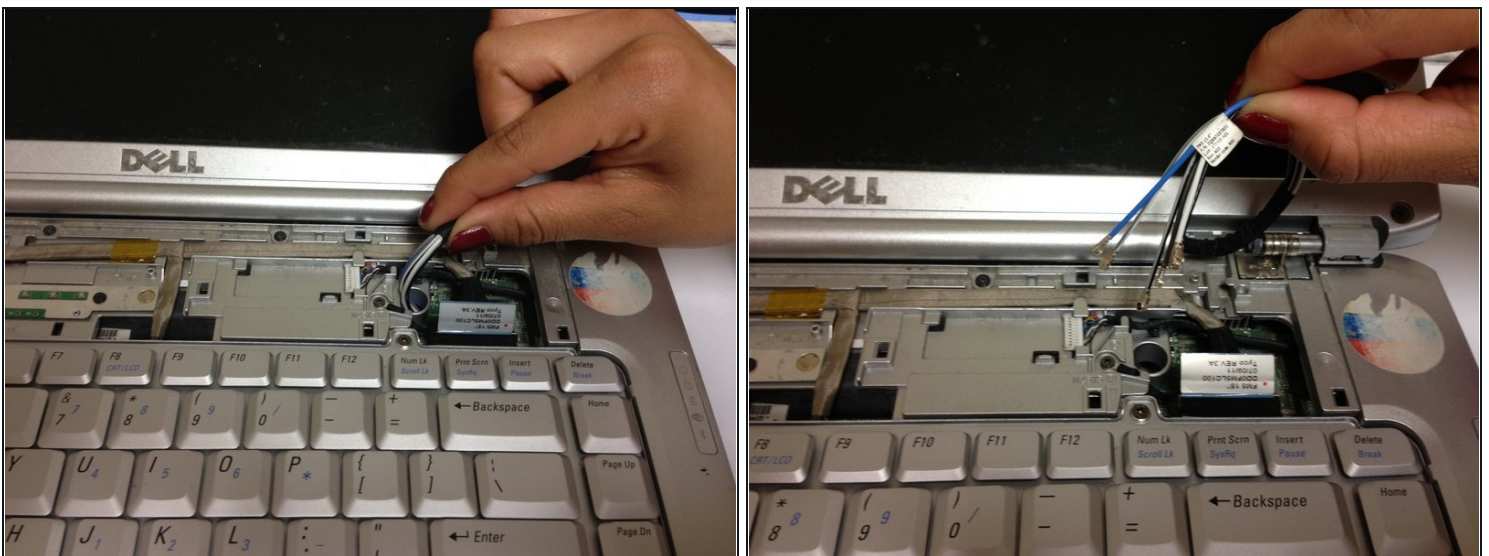
- Locate the two Phillips #1 screws holding the Wireless Local Area Network (WLAN) panel in place.
- Remove these two screws with a Phillips #1 screwdriver.
- Remove the WLAN panel by pulling it up with your hand.

## Step 8



- Disconnect the black and white wires attached to the WLAN card by pulling up on the connectors with your fingers.
- ☑ During reassembly, the black and white wires reconnect to the WLAN card near the black and white triangles, respectively.
- Remove the remaining wires from their protective sleeve by hand.
- ☑ The wires in the sleeve are only used in other Dell laptop models. During reassembly they do not connect to anything so just place them back into the sleeve.

## Step 9



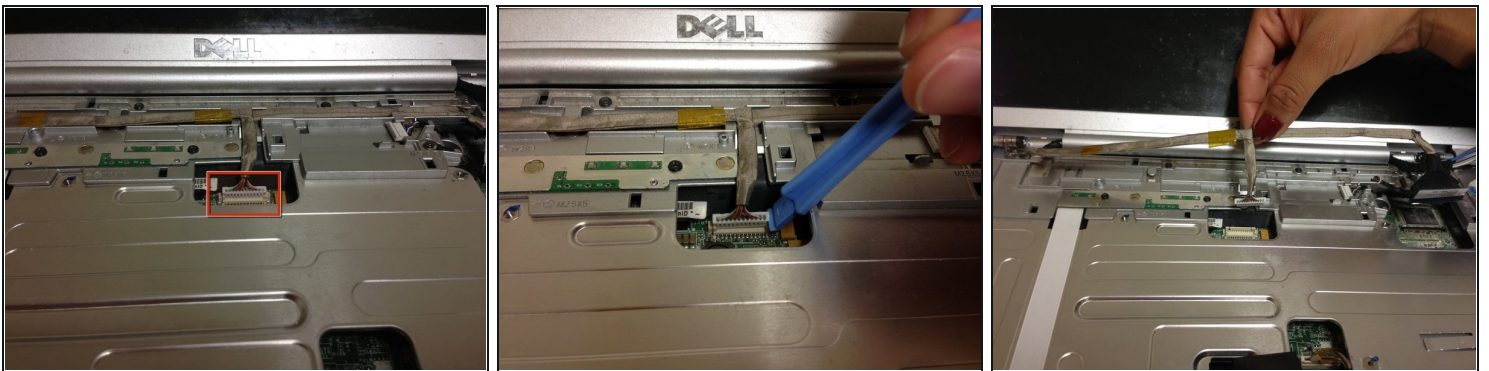
- Pull the wires that you disconnected in the previous step through the hole in the top of the laptop.

## Step 10



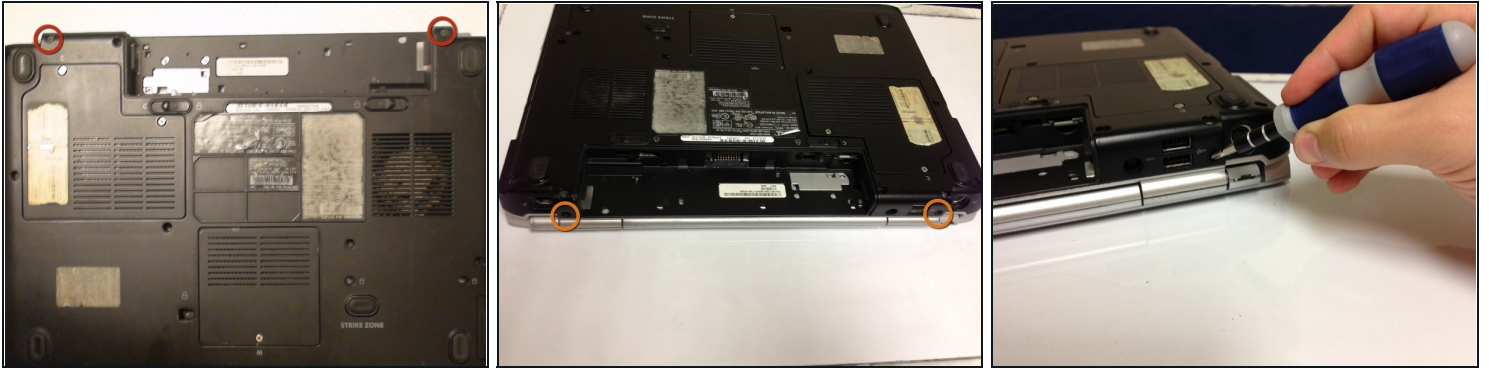
- Detach the Phillips #1 grounding screw with a Phillips #1 screwdriver.
- Disconnect the display cable by pulling up on the rectangular tab with your fingers.

## Step 11



- ⚠ When disconnecting the camera/microphone cable, pull up by the white plug. Pulling on the cable itself can damage it.
- Disconnect the camera/microphone cable by prying it upward with the plastic opener tool.
- Separate the camera/microphone cable from the case by pulling it up with your fingers.

## Step 12



- Remove the two 10 mm Phillips #1 screws from the bottom of the laptop that attach the lid assembly to the laptop with a Phillips #1 screwdriver.
- Remove the two 10 mm Phillips #1 screws from the back of the laptop that also attach the lid assembly to the laptop with a Phillips #1 screwdriver.

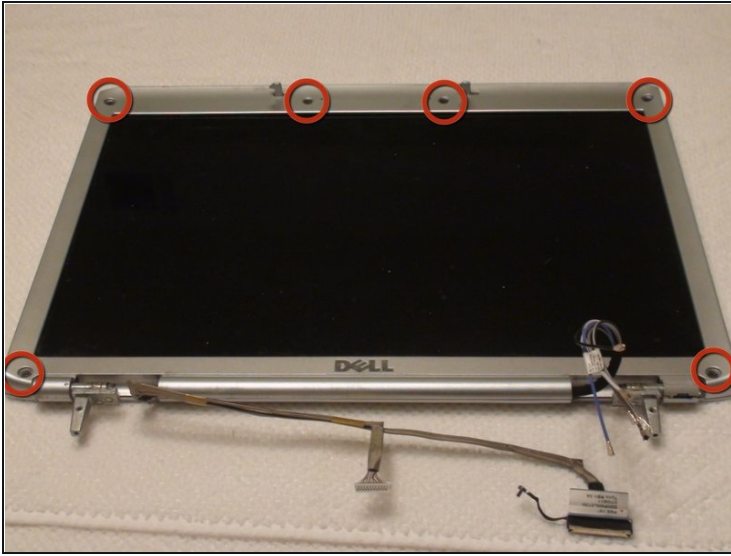
## Step 13



⚠ There is a risk of dropping the lid or base of the laptop, or damaging cables. Make sure no cables are still attached.

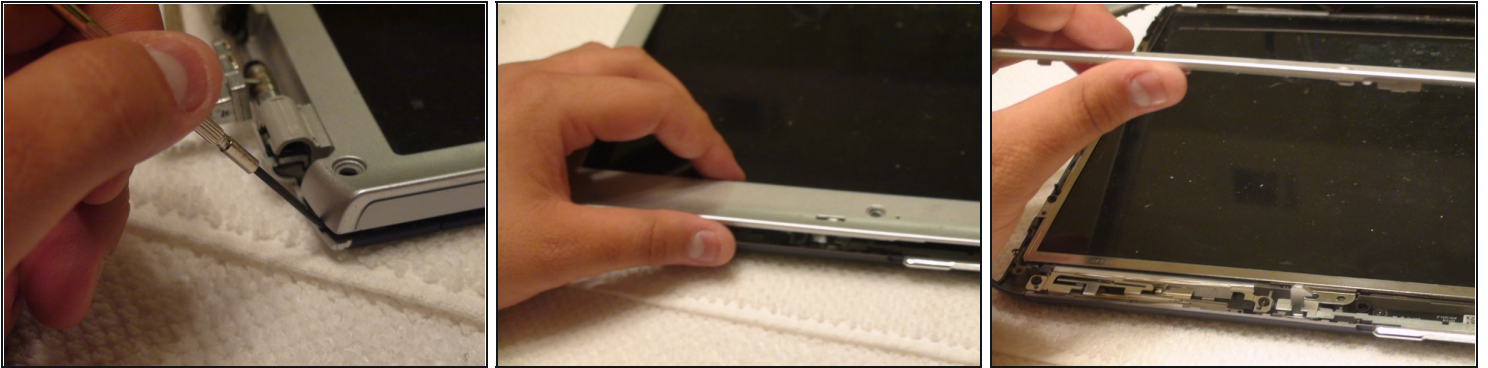
- Remove the lid by pulling it up from the base of the laptop with both hands.

## Step 14 — Liquid Crystal Display (LCD) Monitor



- Locate the six 5 mm Phillips #1 screws connecting the display bezel to the back cover.
- ① If there are mylar screw covers or rubber bumpers covering the screws remove them.
- Remove the six screws with a Phillips #1 screwdriver.

## Step 15



⚠ When removing the bezel be careful not to damage it. Removal should be done gently and slowly.

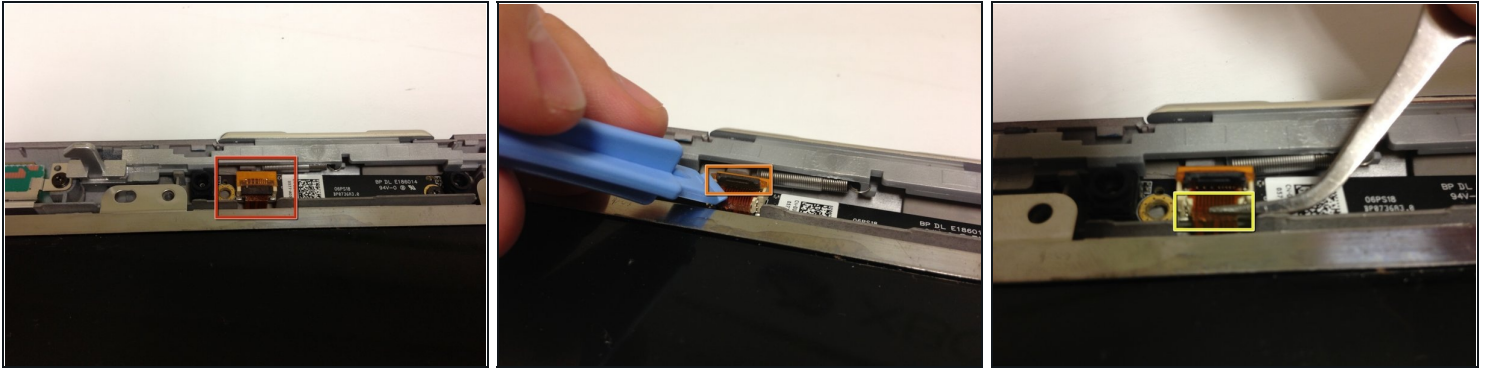
- Use a plastic opener tool to begin separating the bezel from the display assembly.
- Move around the edges of the bezel with your hand or a plastic opener tool in order to loosen it from the display assembly.
- Once the bezel is loose, remove it from the display assembly by hand.

## Step 16



- Locate the eight 4 mm Phillips #1 screws (four on each side of the LCD) that secure the display to the assembly.
- Remove the eight screws with a Phillips #1 screwdriver.

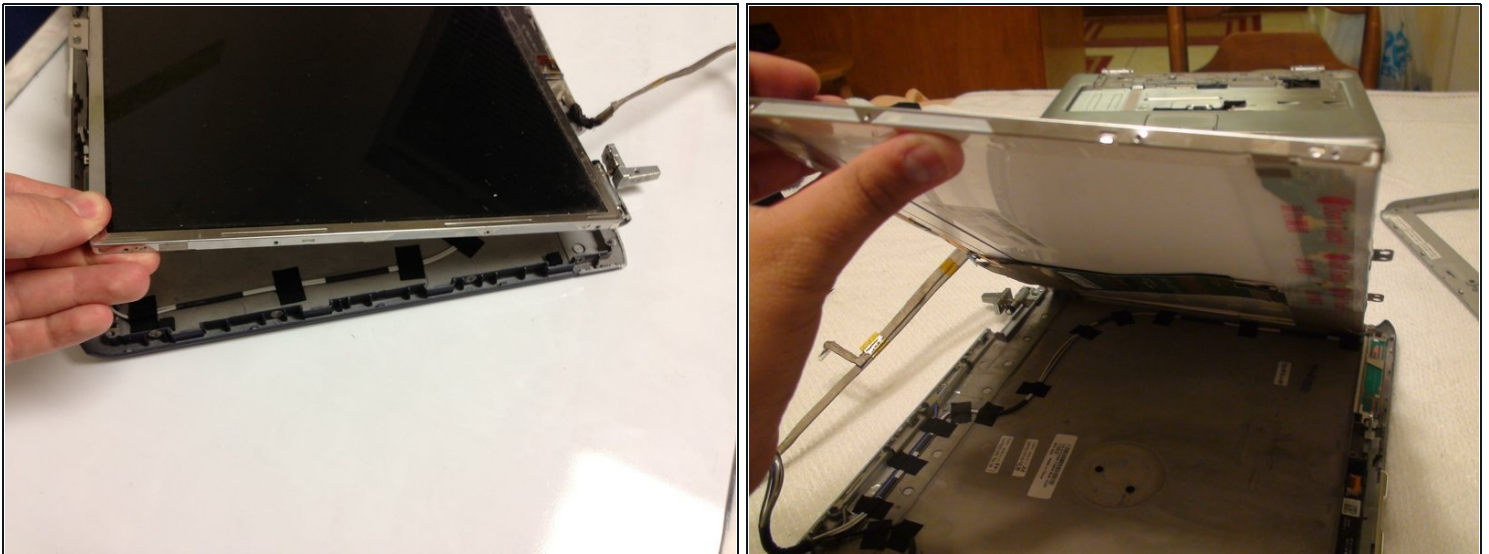
## Step 17



⚠ The LCD display can not be completely removed until the cable attached to the assembly is disconnected.

- Locate where the LCD display cable connects to the housing.
- Lift the black tab with your finger or a plastic opener tool.
- Gently pull on the cable with [tweezers](#) to disconnect it.

## Step 18



- Carefully lift and remove the LCD display with both hands.

---

To reassemble your device, follow these instructions in reverse order.