



Dell Inspiron 14z N114z Display Assembly Replacement

Written By: Terrence15



INTRODUCTION

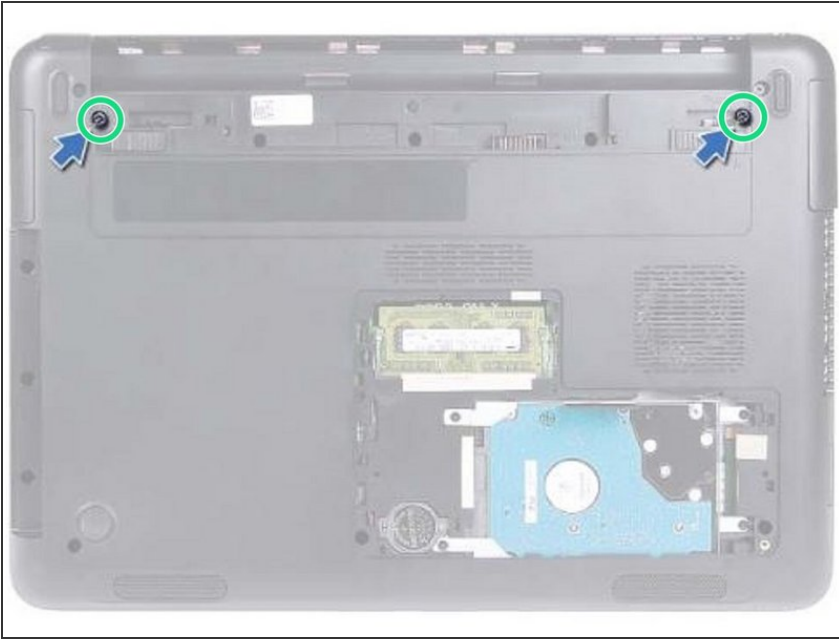
In this guide, we will be showing you how to remove and replace the Display Assembly.



TOOLS:

- [Phillips #0 Screwdriver](#) (1)
-

Step 1 — Remove the Screws

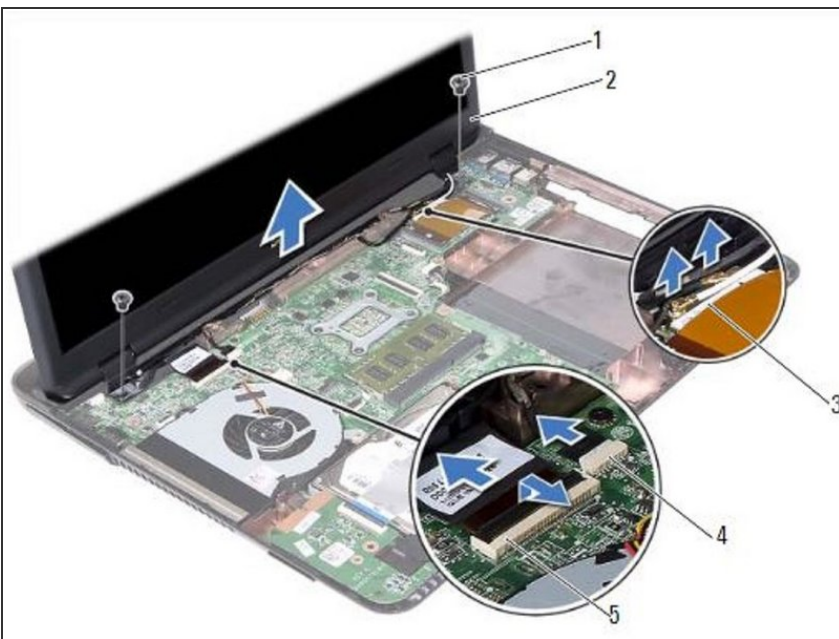


WARNING: Before working inside your computer, read the safety information that shipped with your computer. Follow the instructions in ["Before You Begin"](#).

CAUTION: To avoid electrostatic discharge, ground yourself by using a wrist grounding strap or by periodically touching an unpainted metal surface (such as a connector on your computer).

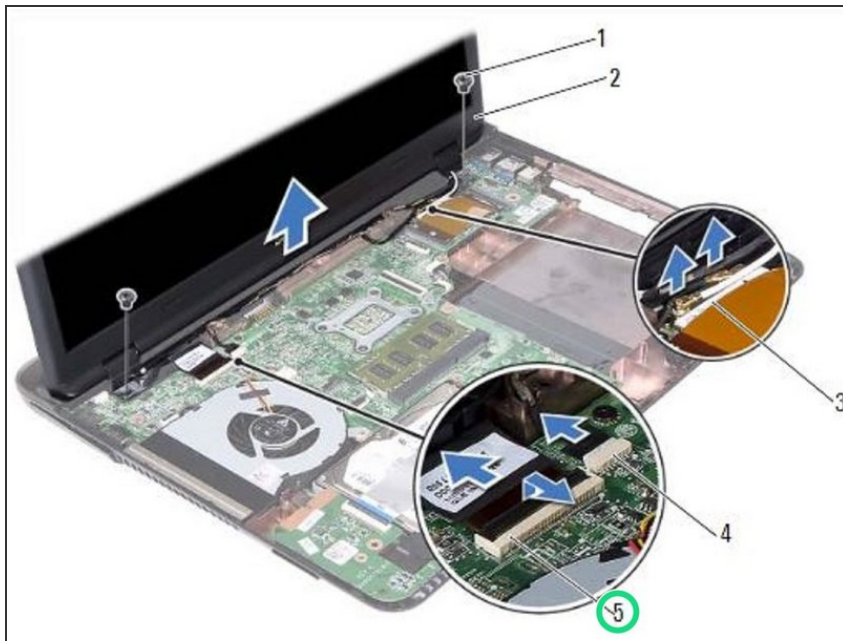
- Remove the two screws that secure the display assembly to the computer base.

Step 2 — Turn over the Computer



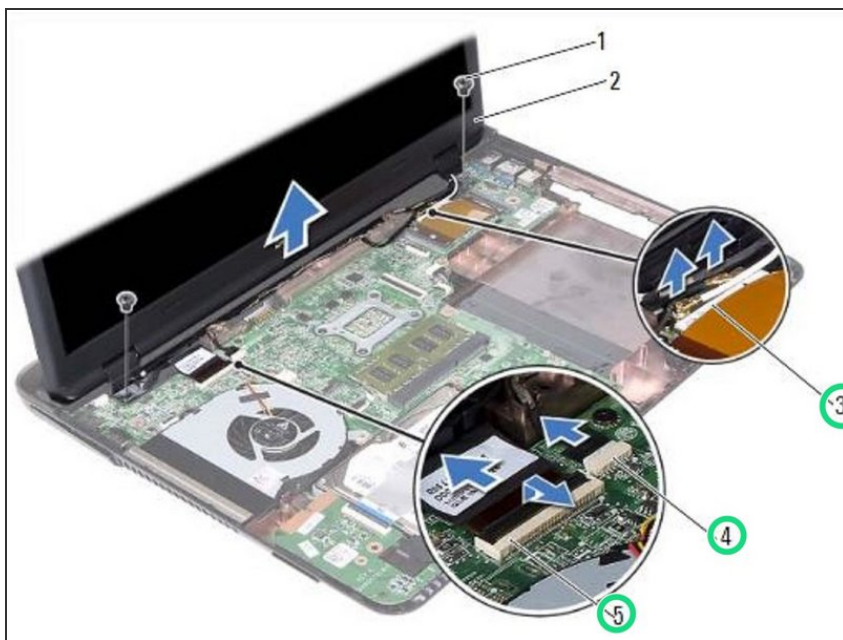
- Turn the computer over and open the display as far as possible.

Step 3 — Lifting the Connector Latch



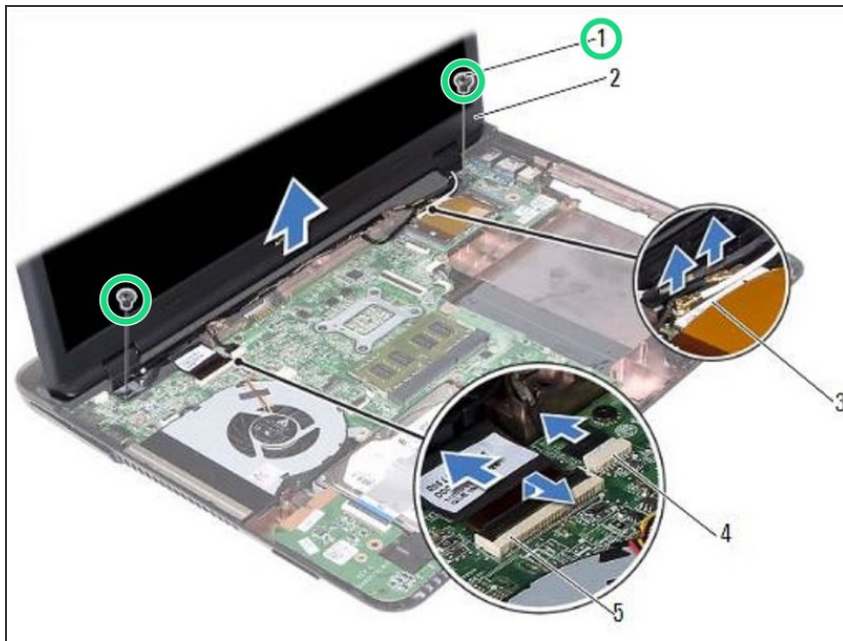
- Lift the connector latch and disconnect the display cable from the connector on the system board.

Step 4 — Note the Routing



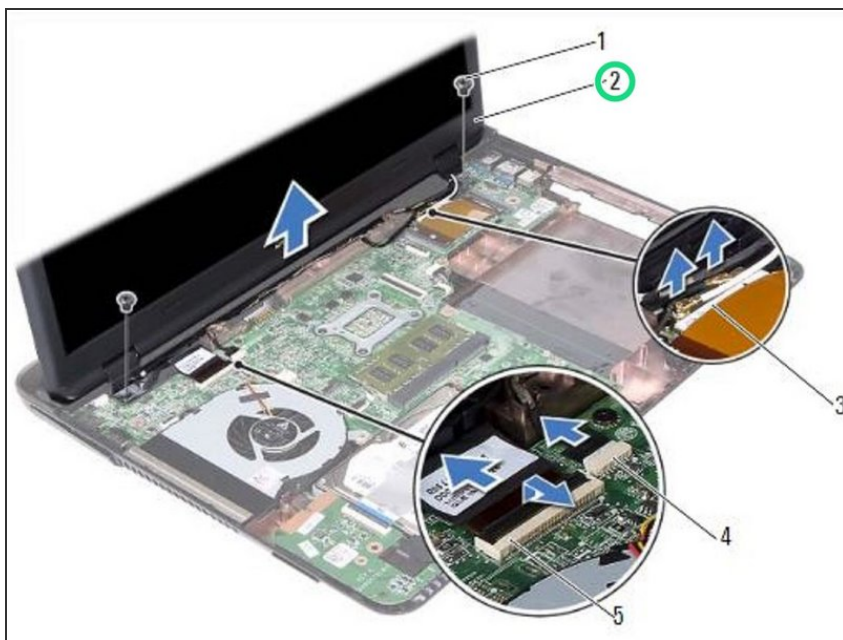
- Note the routing of the display, camera, and mini-card antenna cables, and remove the cables from their routing guides.

Step 5 — Remove the Screws



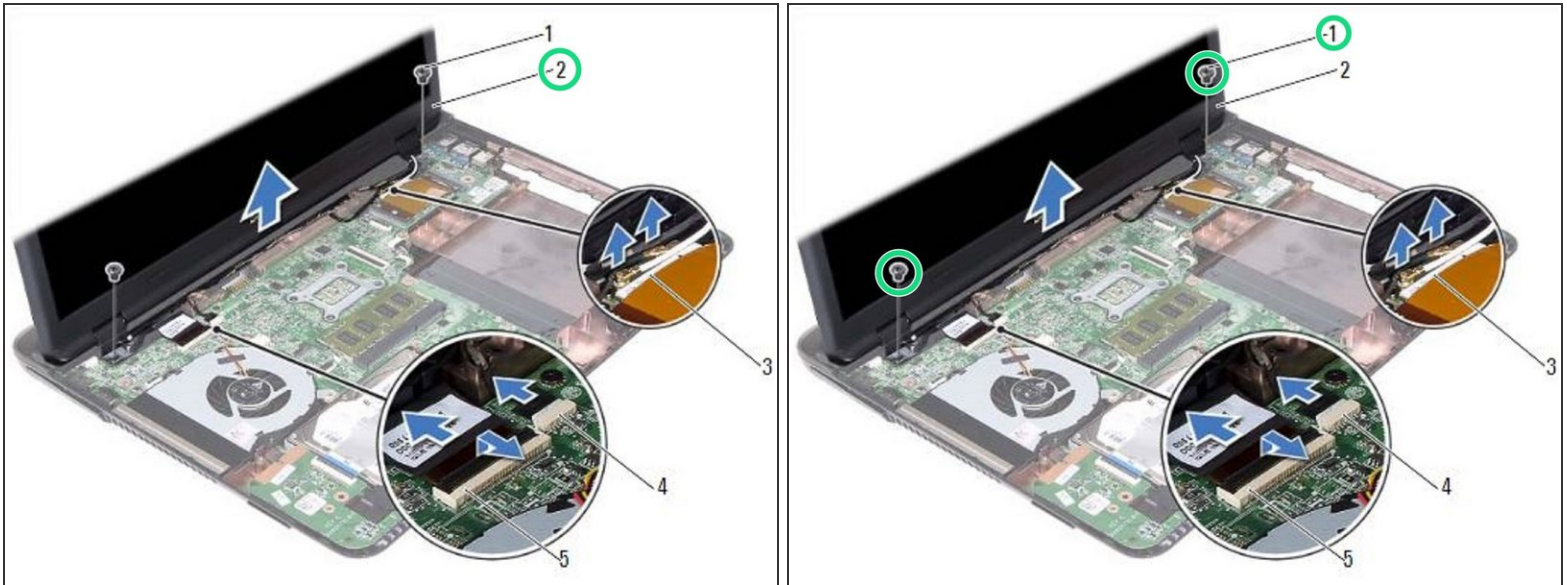
- Remove the two screws that secure the display assembly to the computer base.

Step 6 — Lifting the Display Assembly



- Lift the display assembly off the computer base.

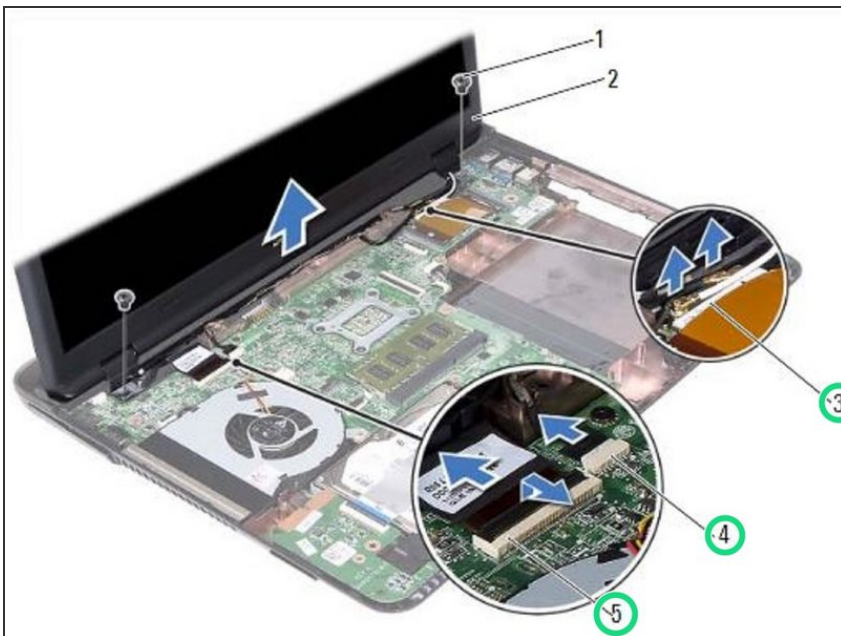
Step 7 — Placing the Display Assembly



- Place the **NEW** display assembly in position and replace the two screws that secure the display assembly to the computer base.

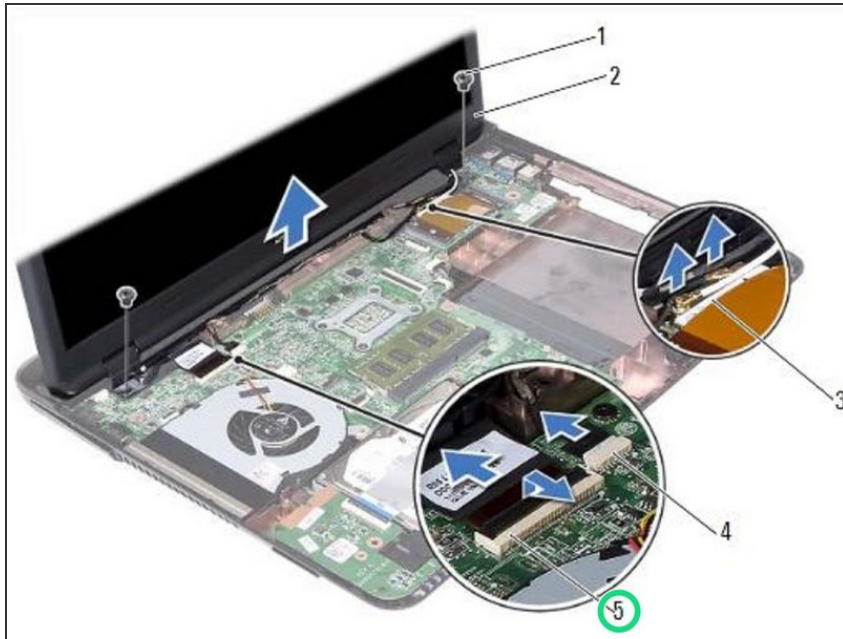
i NOTE: Ensure that no cables are caught between the display assembly and the computer base.

Step 8 — Route the Cables



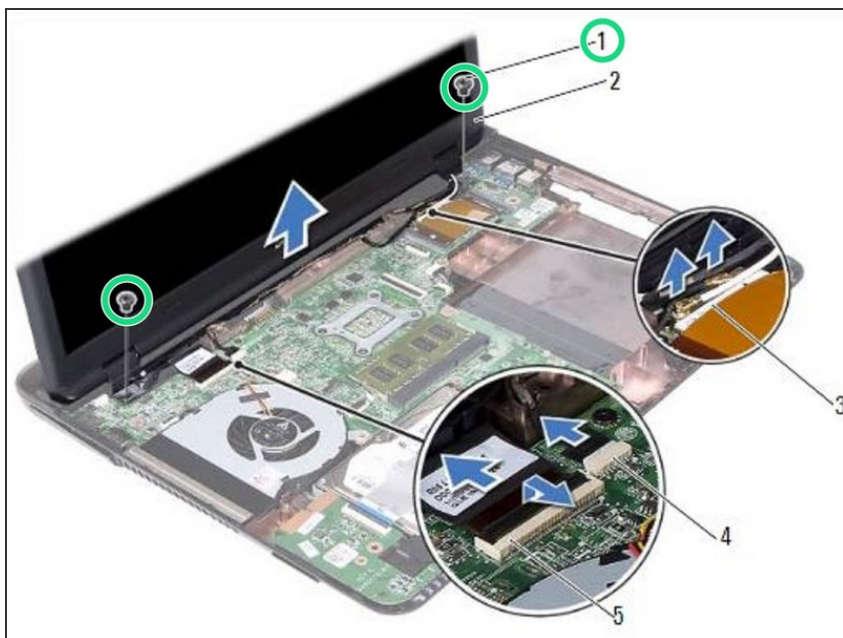
- Route the display, camera, and mini-card antenna cables through their routing guides.

Step 9 — Sliding the Display Cable



- Slide the display cable in the connector on the system board and press down the latch to secure the cable.

Step 10 — Replace the Screws



- Turn the computer over.
- Replace the two screws that secure the display assembly to the computer base.