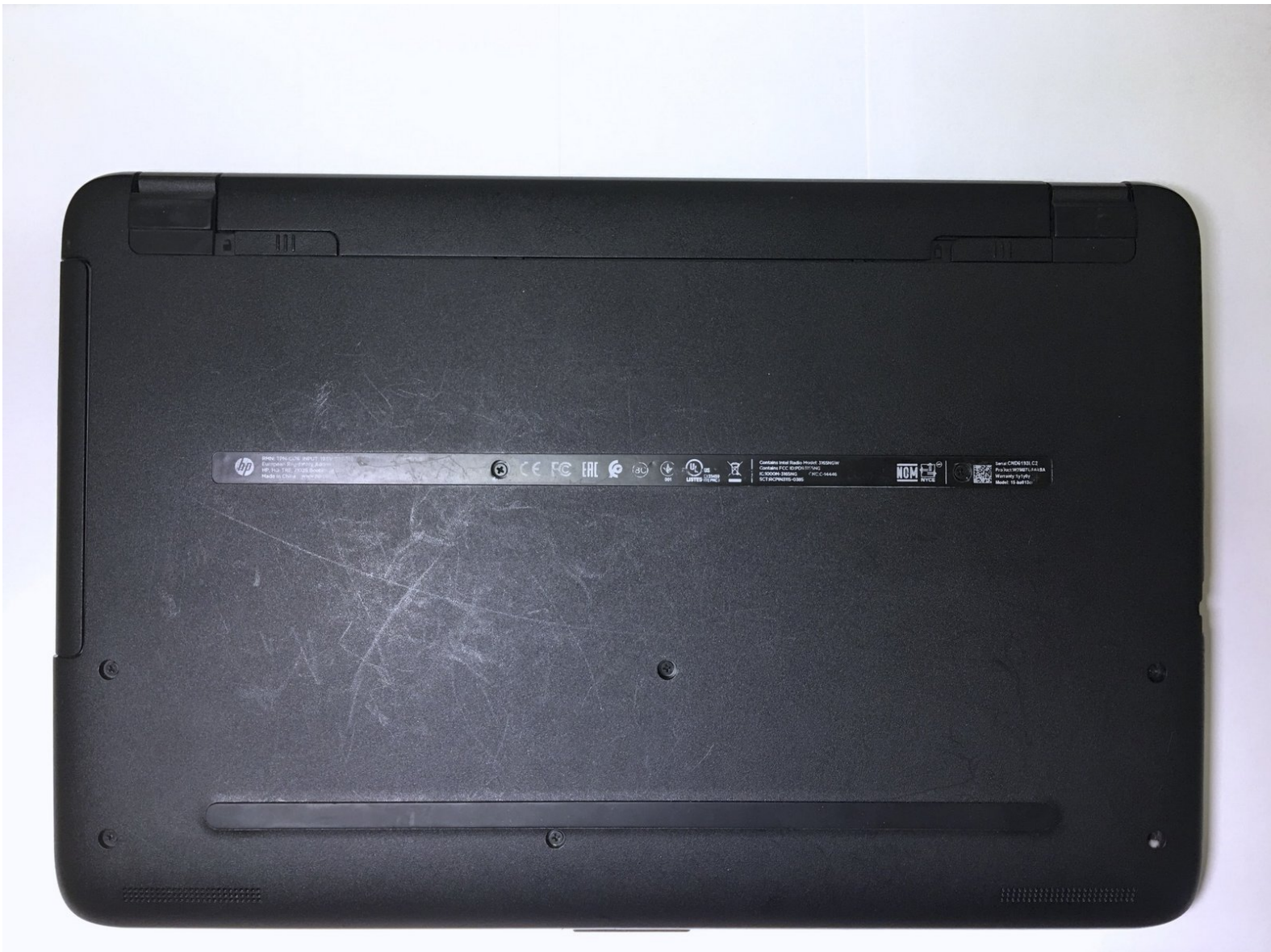




# HP 15-ba013cl Hard Drive Replacement

HP 15-ba013cl notebook (Product Number W2M87UA)

Written By: Joe Severino



---

# INTRODUCTION

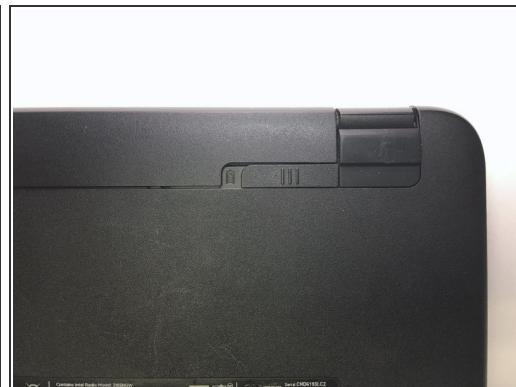
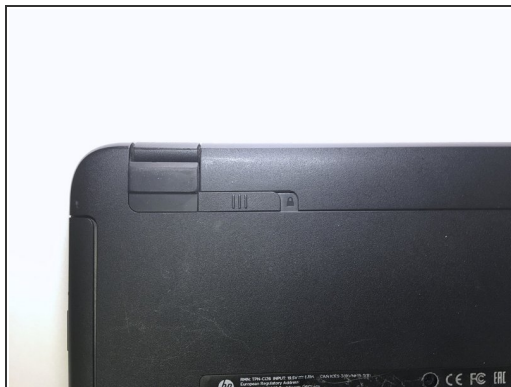
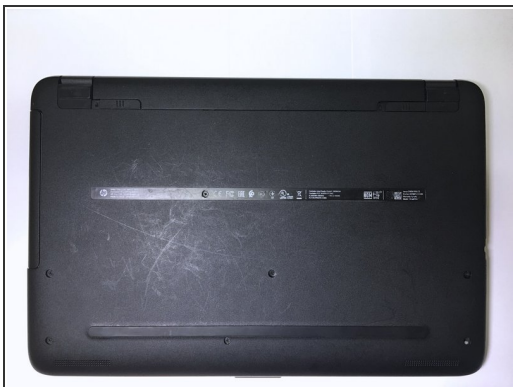
Use this guide to replace a dead hard drive.



## TOOLS:

- [Spudger](#) (1)
  - [iFixit Opening Tools](#) (1)
  - [Phillips #1 Screwdriver](#) (1)
  - [Phillips #0 Screwdriver](#) (1)
-

## Step 1 — Remove Battery



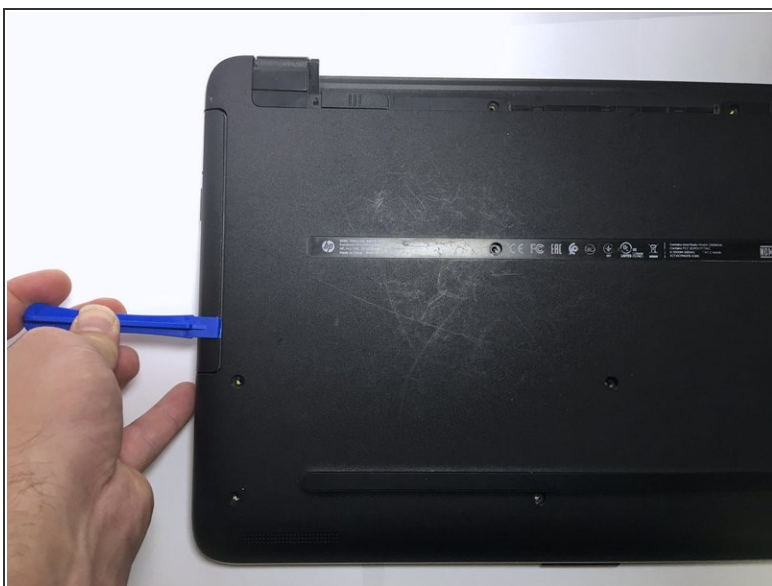
- Use Latch on the left to unlock the battery
- Use Latch on the right to eject the battery

## Step 2 — Remove Case Screws



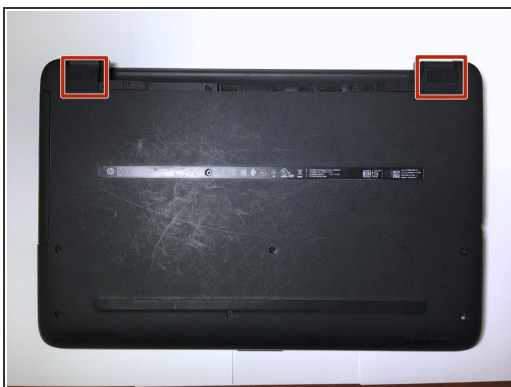
- Remove case screws
- Ten 8mm Phillips #1

### Step 3 — Remove Optical Drive



- Use prying tool to remove optical drive

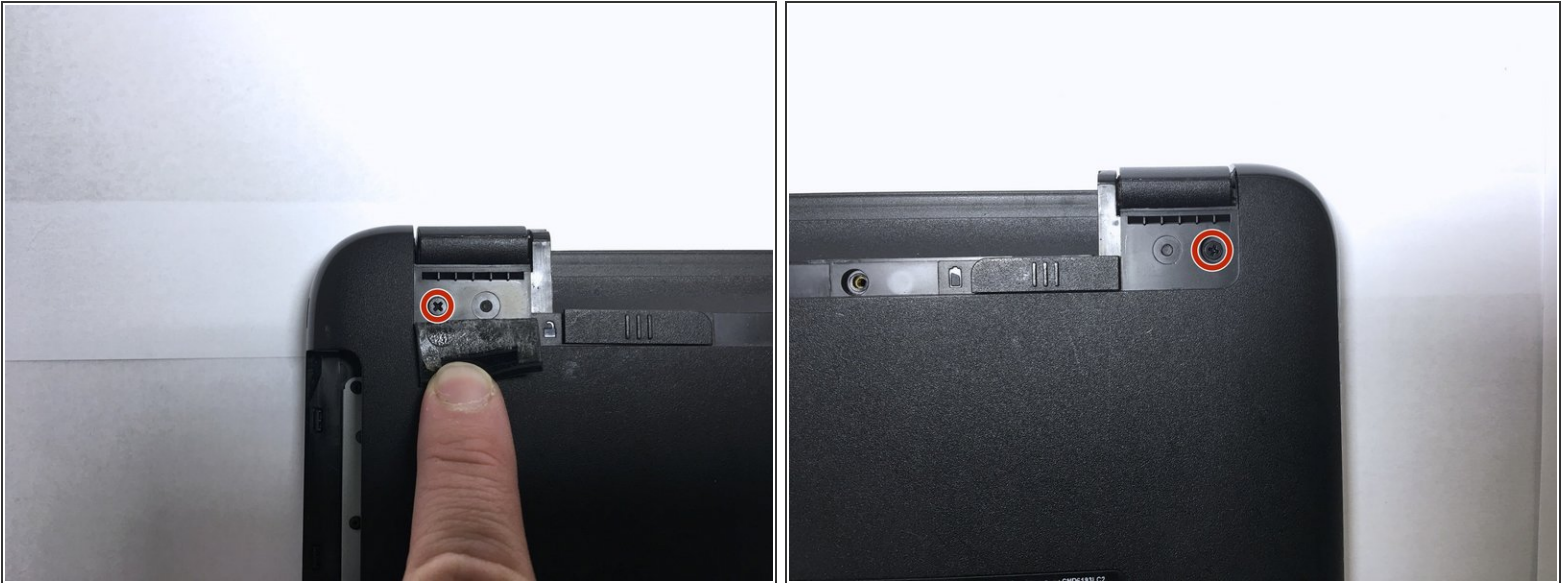
### Step 4 — Remove Rubber Feet



- Use Uspudger to remove left and right rubber feet



## Step 5 — Remove Screws Under The Rubber Feet



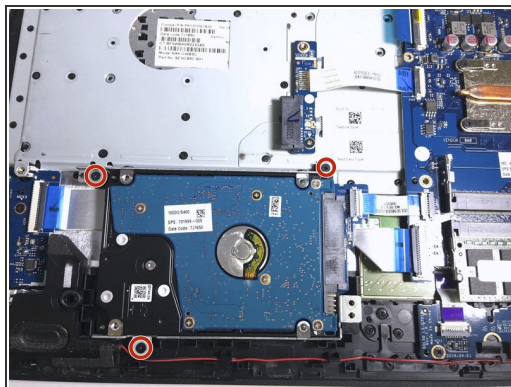
- Remove the screws located beneath both rubber feet.
  - Two 8mm Phillips #1

## Step 6 — Remove Bottom Of The Case



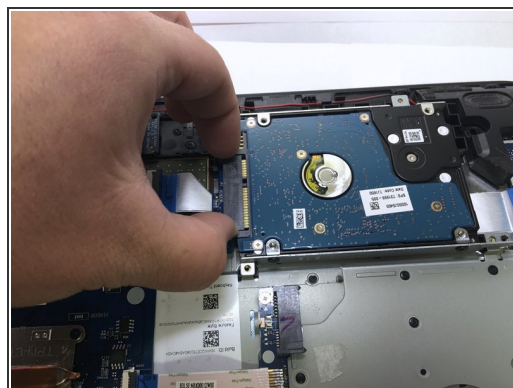
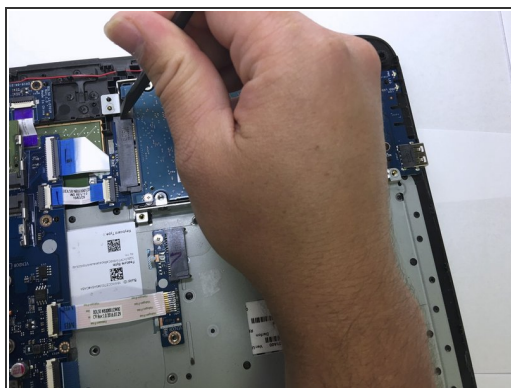
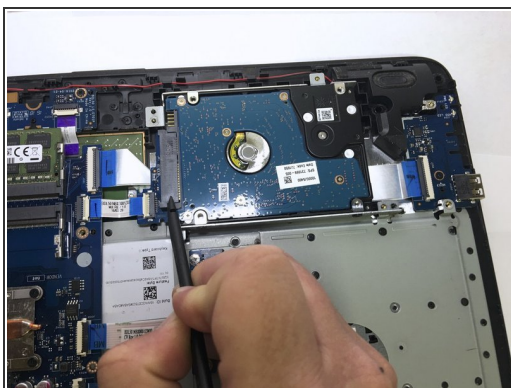
- Use the prying tool to remove the bottom case.
  - ⚠ Careful to not damage the clips that hold the bottom case on.
  - 📎 I found it easier to start on the opposite side of the hinges.

## Step 7 — Remove Hard Drive Bracket



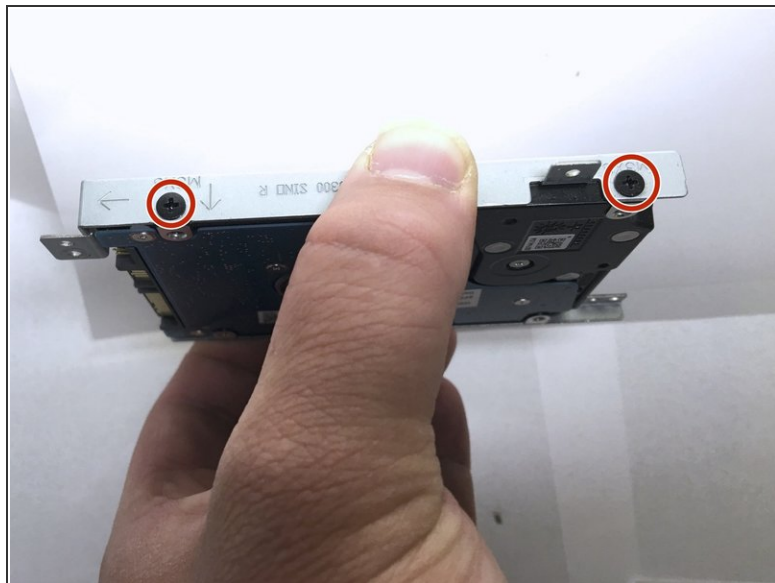
- Remove screws securing the hard drive bracket
  - Three 3mm Phillips #0

## Step 8 — Disconnect Hard Drive



- Use spudger to loosen the SATA connector then disconnect the cable and remove the hard drive.

## Step 9 — Remove Bracket From Hard Drive



- Remove bracket screws from the hard drive.
  - Four 3mm Phillips #1
- ☑ Make sure, when reassembling, to orient the hard drive correctly in the brackets.

To reassemble your device, follow these instructions in reverse order.