



# Button Enhancing/Replacing Guide

This guide will provide information on how to fix a button that is not usable for this device anymore. It will show steps on how to get to the buttons and what to do next.

Written By: Chotipong Chamchalaem



---

## INTRODUCTION

I will teach you step by step how to disassemble the device and replace the damaged buttons.

---



### TOOLS:

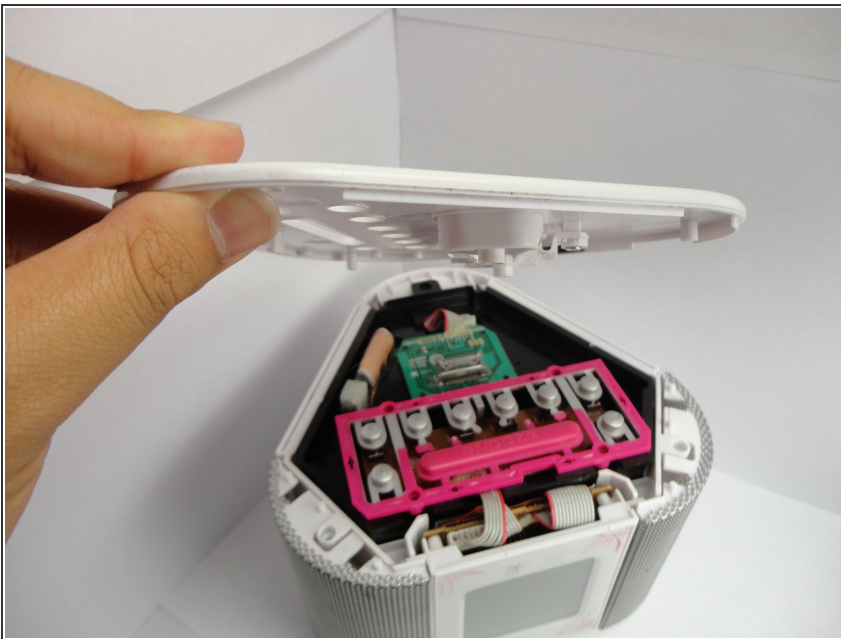
- [precision screw drivers](#) (1)
-

## Step 1 — Buttons



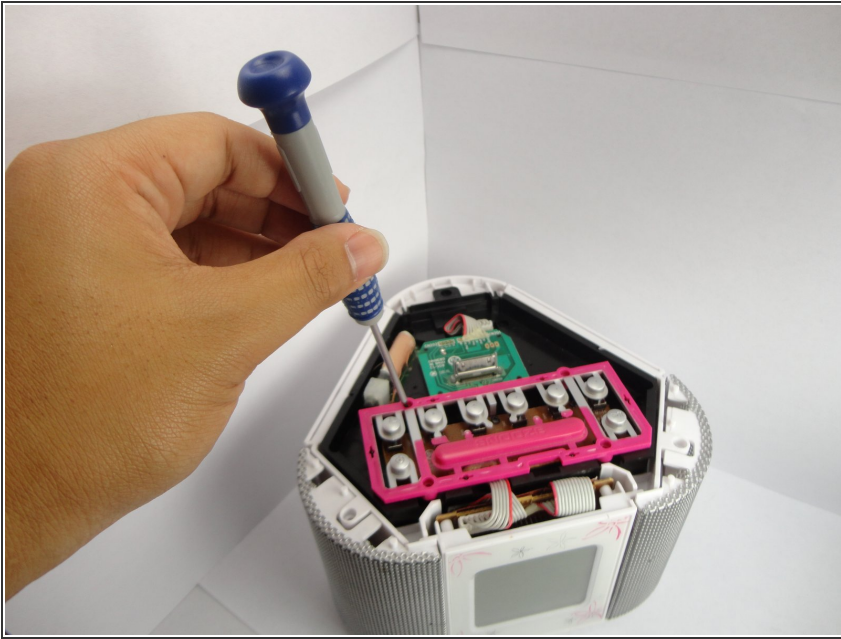
- Unscrew the screws on the top side of the device.

## Step 2



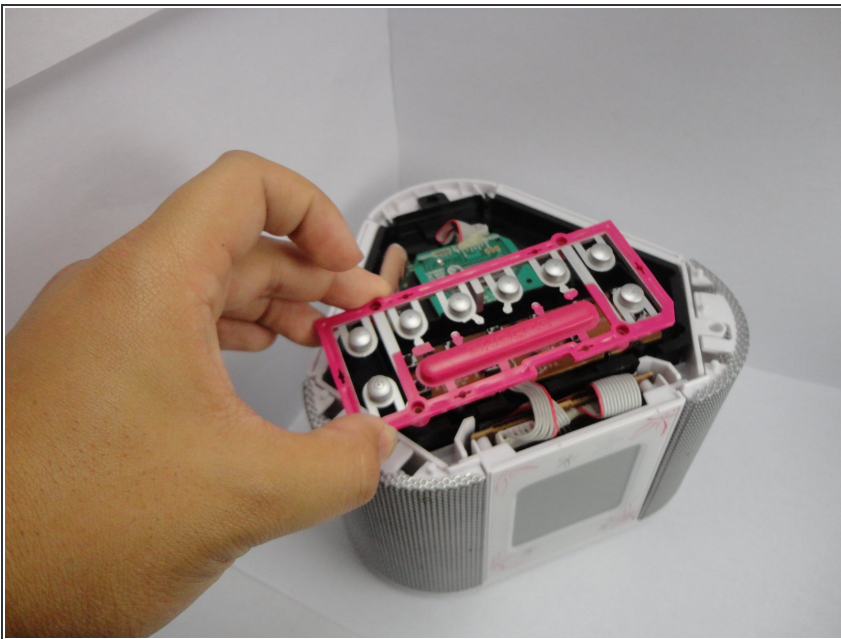
- Take the top lid off of the device.

### Step 3



- Unscrew the screws holding the pink button sheet.

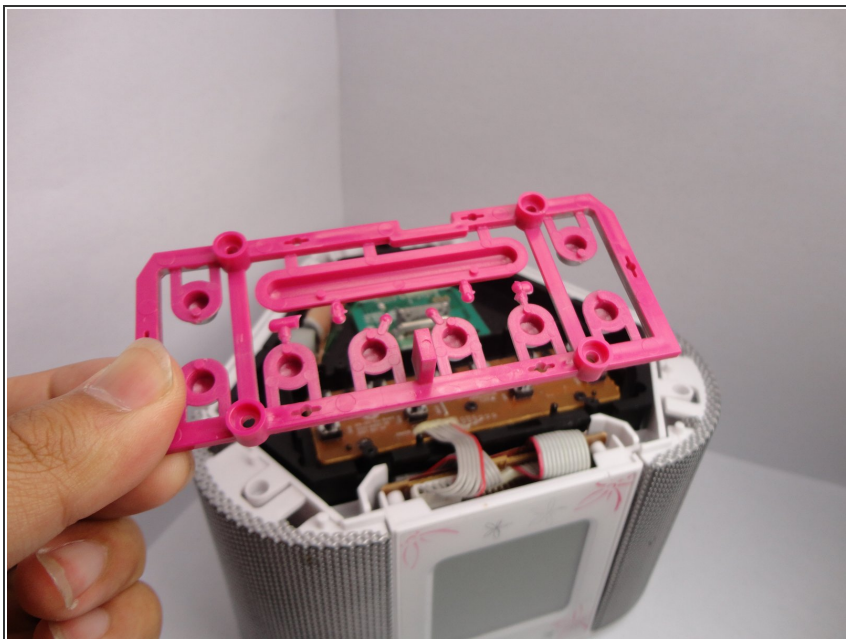
### Step 4



- Remove the button sheet off of the device.

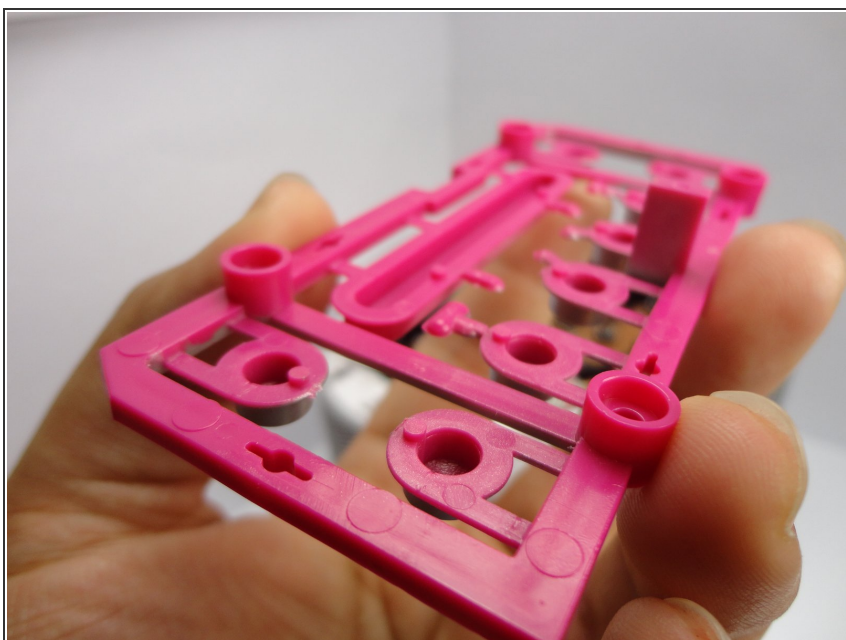


## Step 5



- Examine the button sheet to check for any damages that may prevent the buttons from working.

## Step 6



- Examine closer at the button sheet for sticks on the opposite side of the buttons.

## Step 7



- If the button sheet or button is damaged, you may need to purchase a new button sheet to replace the damaged one.

To reassemble, follow these steps in reverse order.