



# Toshiba Satellite C55-A5302 Keyboard Replacement

This guide shows you how to replace the keyboard on the Toshiba Satellite C55-A5302.

Written By: Nicole Hague



---

# INTRODUCTION

This guide will teach you how to disassemble the device in order to replace the Keyboard.

---



## TOOLS:

- [Phillips #1 Screwdriver](#) (1)
  - [Metal Spudger](#) (1)
-

## Step 1 — Battery



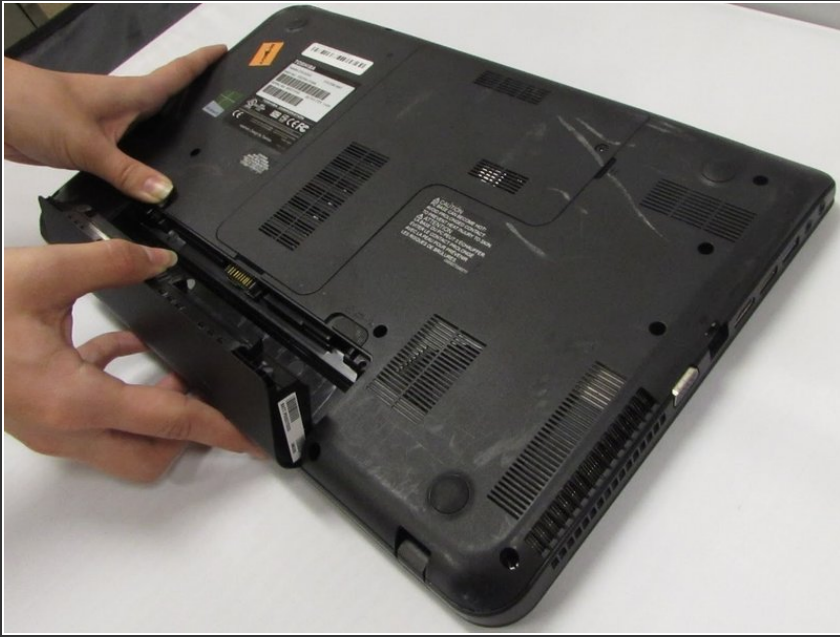
- Power down the laptop and remove all power cords. After this is done, turn the laptop over.

## Step 2



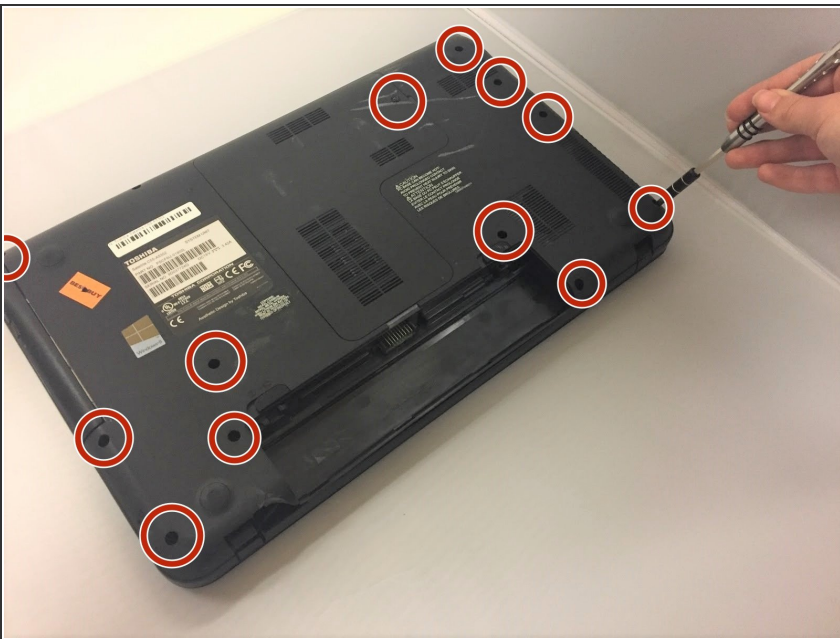
- Slide the battery latch outwards away from the center of the device.
- ⓘ The right latch will slide to the right, and left latch to the left.

### Step 3



- Lift and remove the battery from the device.

### Step 4 — Hard Drive



- Use the Phillips #1 screwdriver to unscrew the thirteen screws on the back of your device.

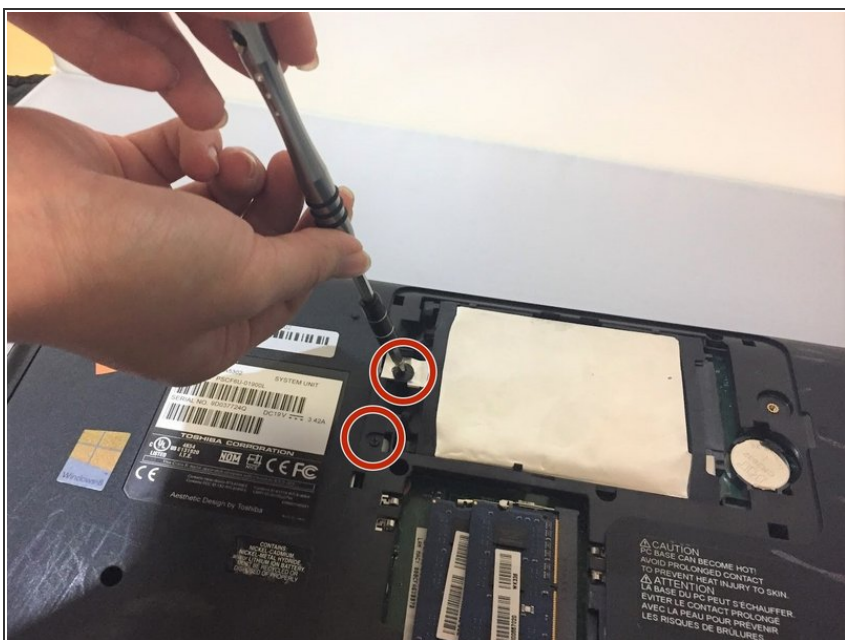


## Step 5



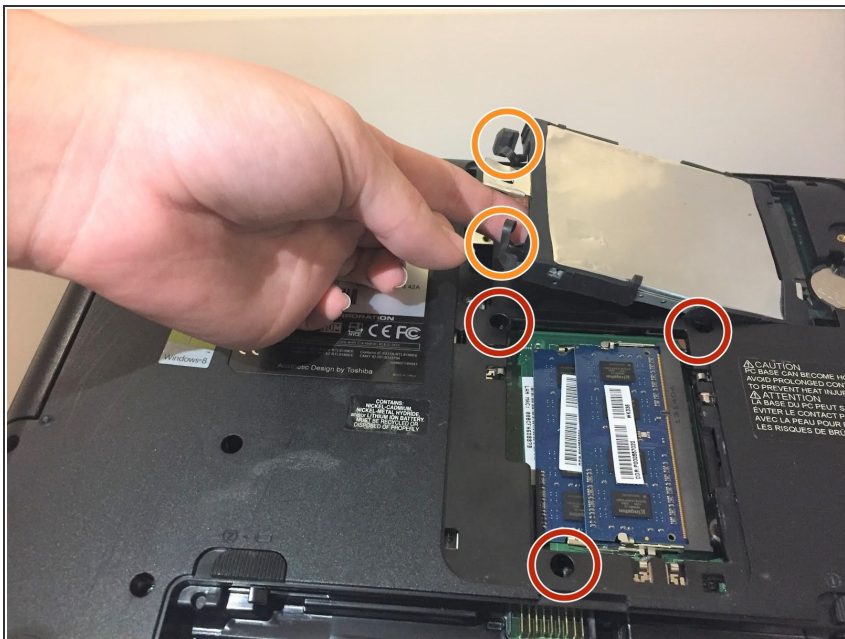
- Remove the middle plastic cover to expose the hard drive.

## Step 6



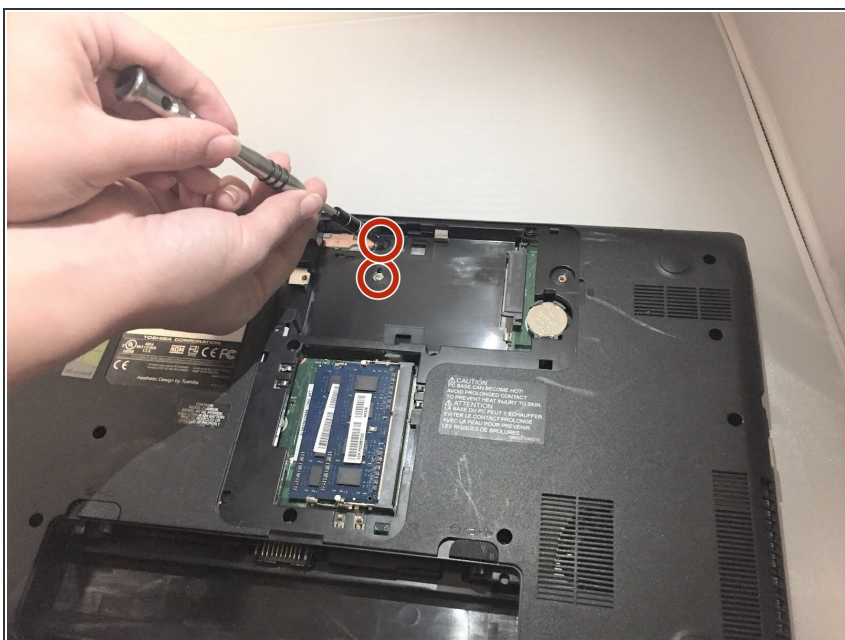
- Using the Phillips #1 screwdriver, remove the two screws holding the hard drive in place.

## Step 7



- Remove the three screws using the Phillips #1 screwdriver.
- Insert your fingers into the rubber ends and gently pull the hard drive out of the device.

## Step 8 — Optical Disk Drive



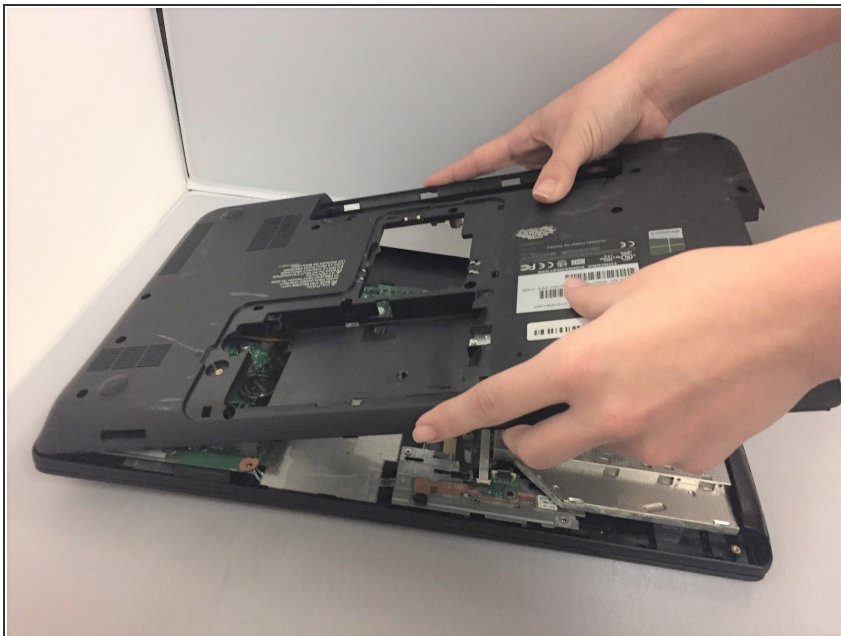
- Use the Phillips #1 screwdriver to remove the two screws under the hard drive.

## Step 9



- Use a metal spudger and run it along the edges of the computer to take off the plastic back cover. (Starting near a port usually allows more space for the spudger to be inserted)

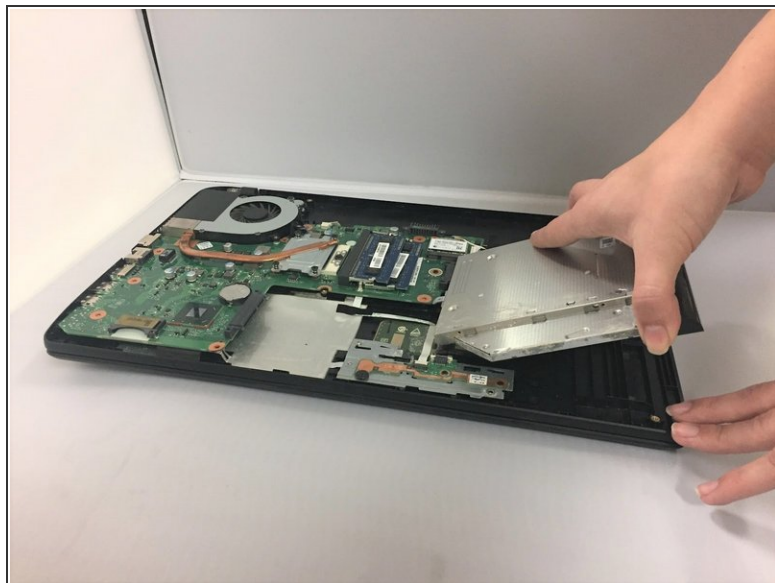
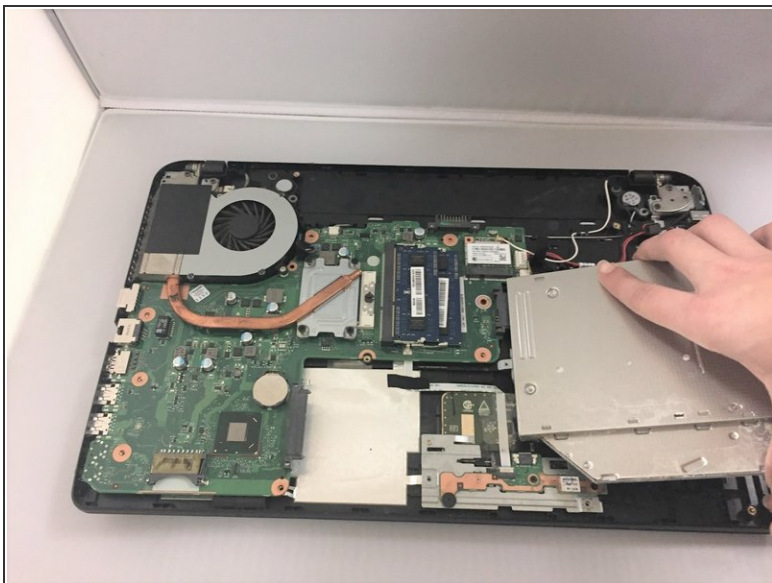
## Step 10



- Slowly work from one end to the other to lift the back cover off.

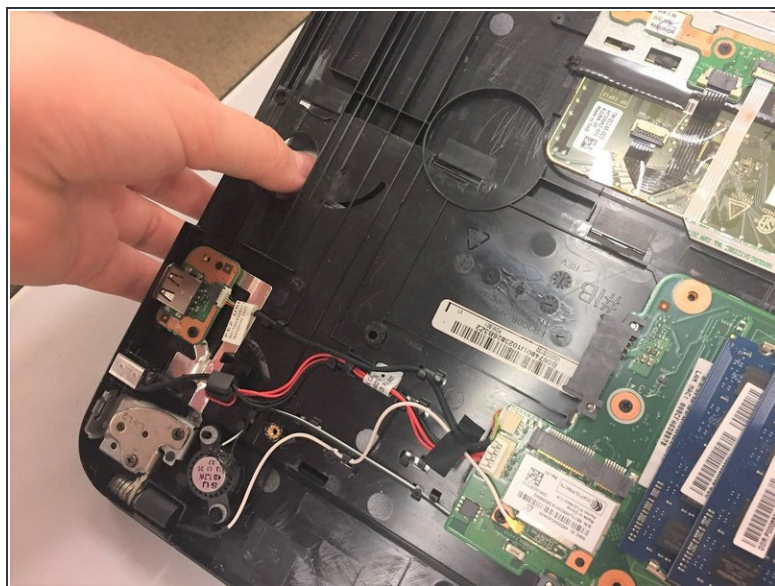
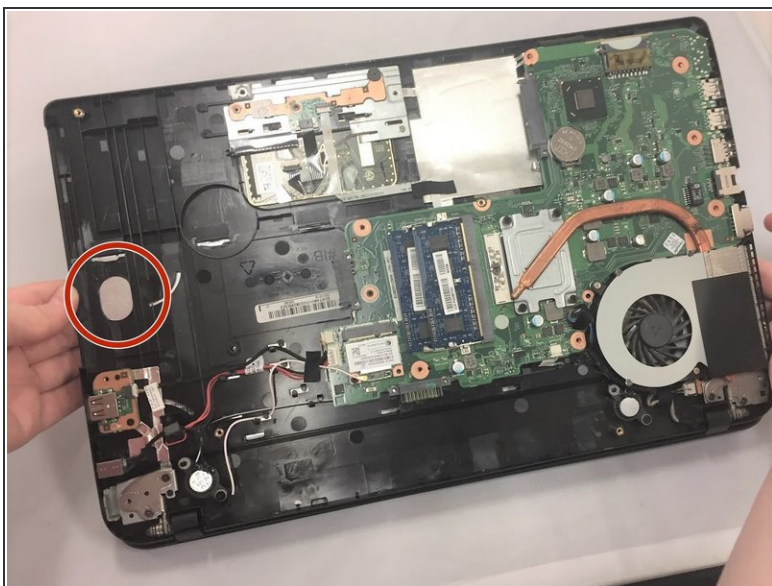


## Step 11



- Grab hold of the optical drive and elevate it slightly and remove it from the computer.

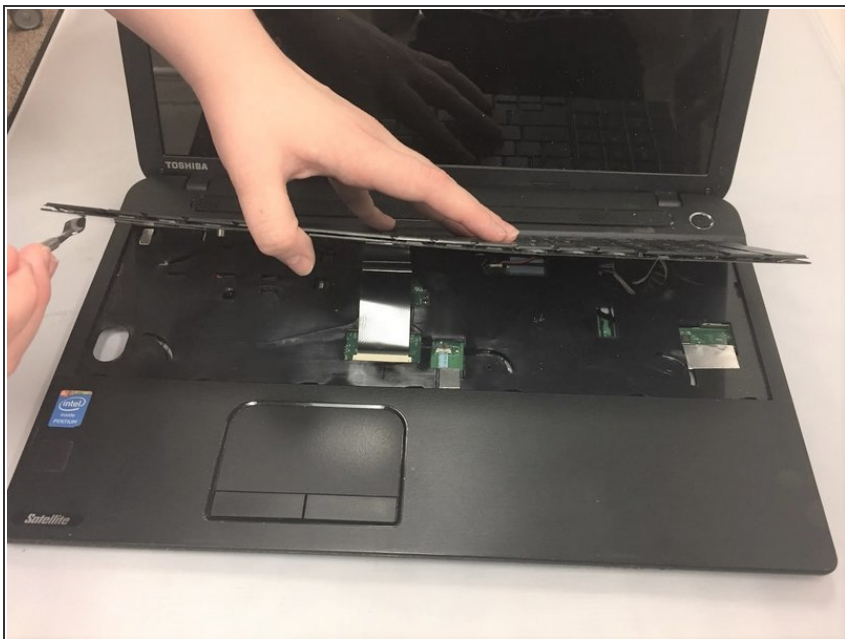
## Step 12 — Keyboard



- Using your thumb, apply a light amount of pressure to the underside of the keyboard until it pops out a bit.

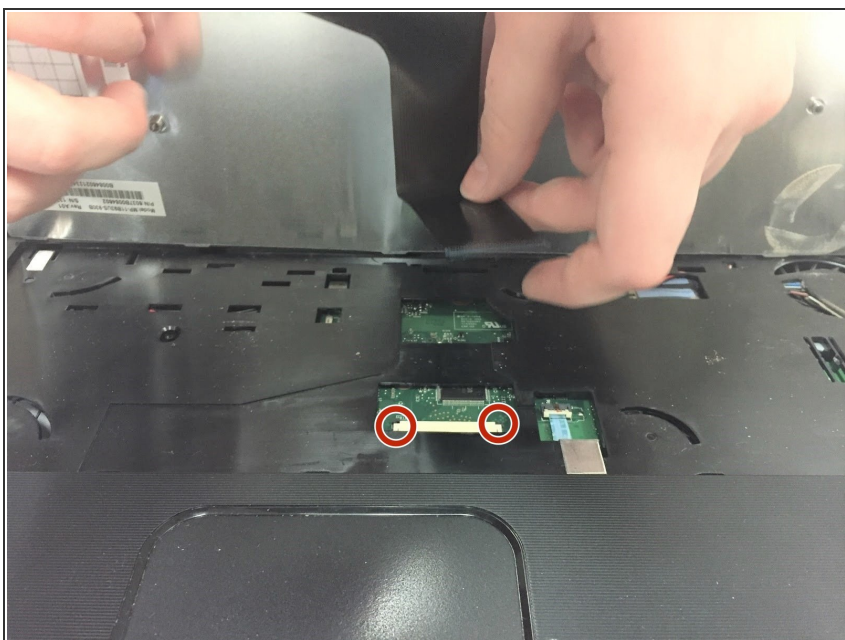


## Step 13



- Using the metal spudger, carefully pry up the edges of the keyboard.

## Step 14



- Shift the small tabs on either side of the ribbon outwards to release the end of the ribbon.
- Gently remove the keyboard from the device.

To reassemble your device, follow these instructions in reverse order.