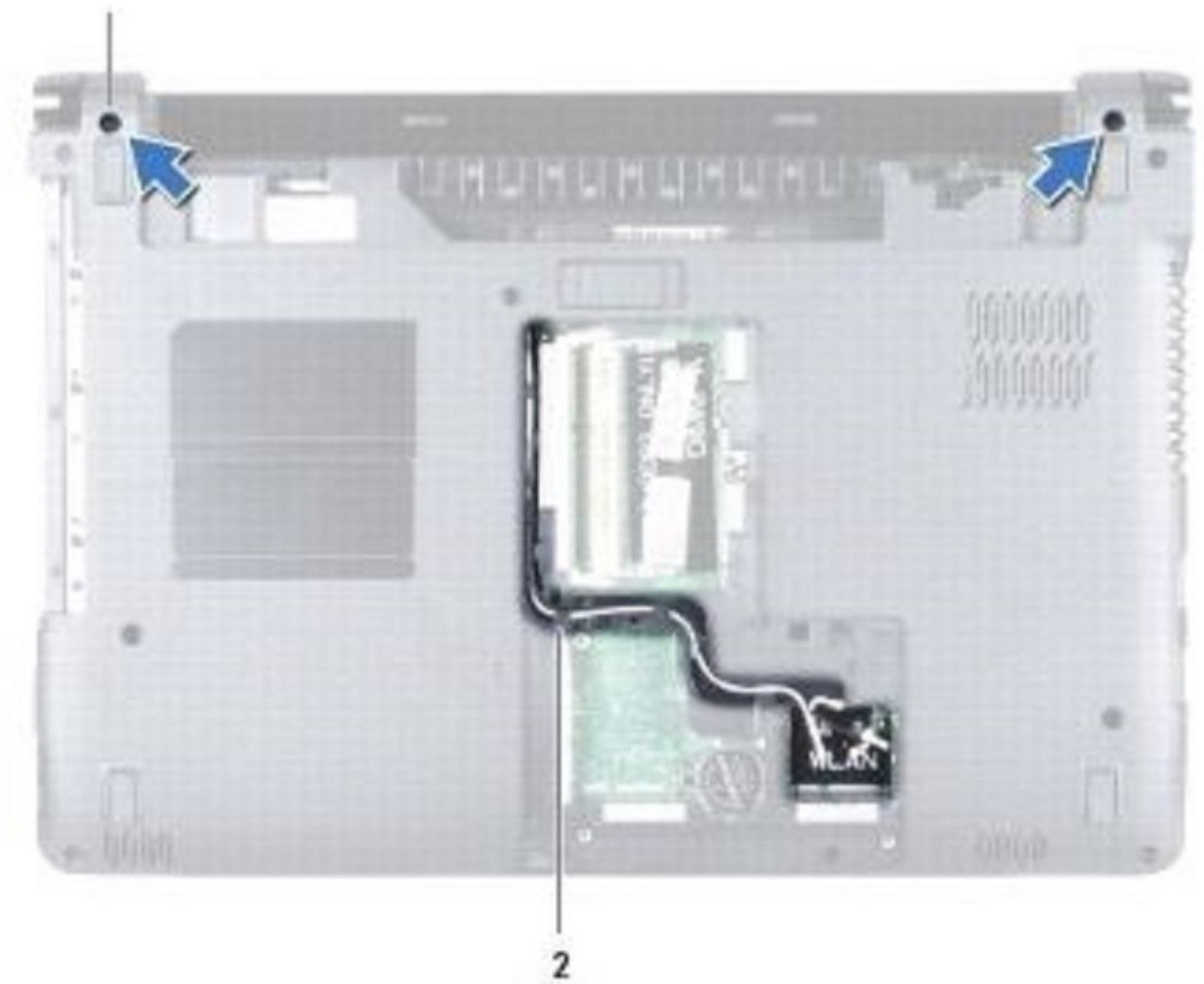




Dell Inspiron 1464 Display Assembly Replacement

Written By: Terrence15



INTRODUCTION

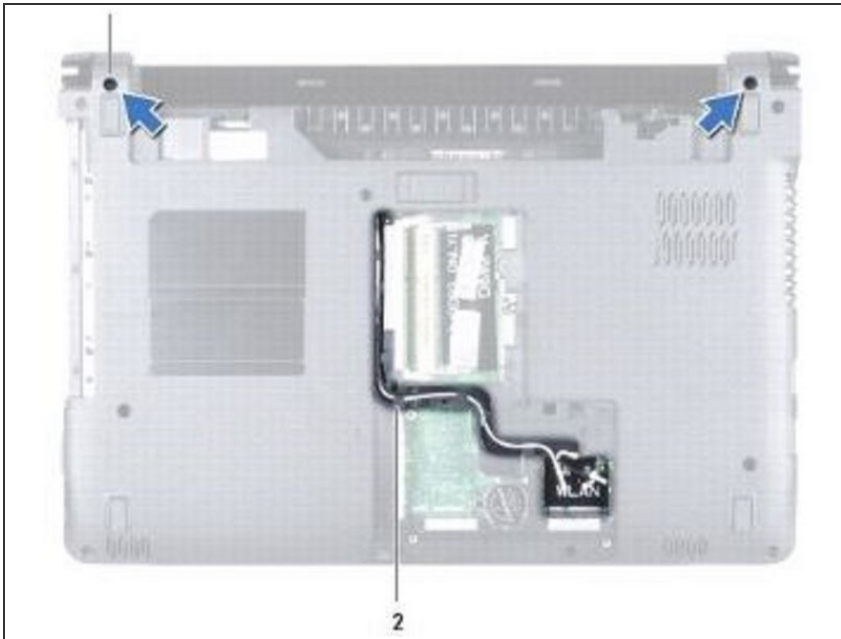
In this guide, we will be showing you how to remove and replace the Display Assembly.



TOOLS:

- [Essential Electronics Toolkit](#) (1)
-

Step 1 — Note the Routing

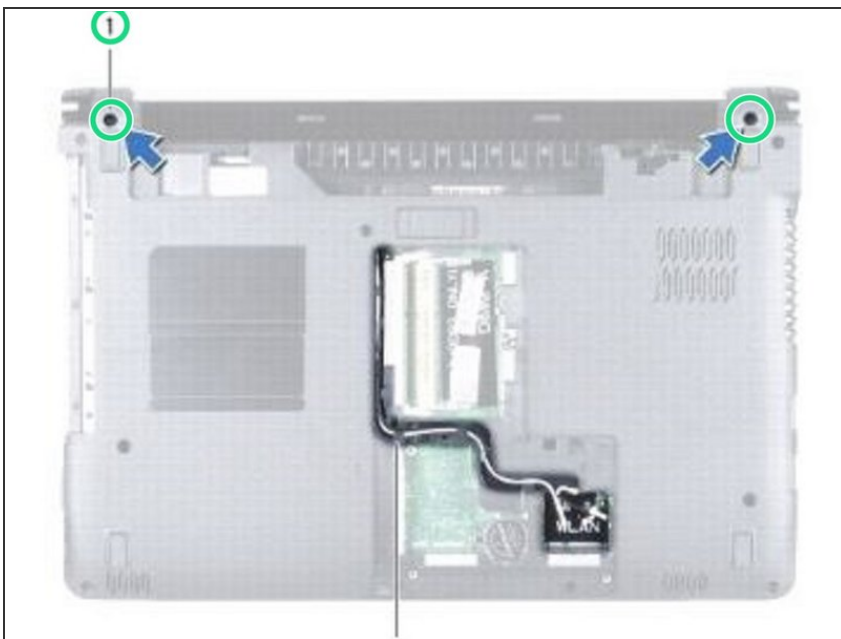


WARNING: Before working inside your computer, read the safety information that shipped with your computer. Follow the procedures in [Before You Begin](#).

CAUTION: To avoid electrostatic discharge, ground yourself by using a wrist grounding strap or by periodically touching an unpainted metal surface.

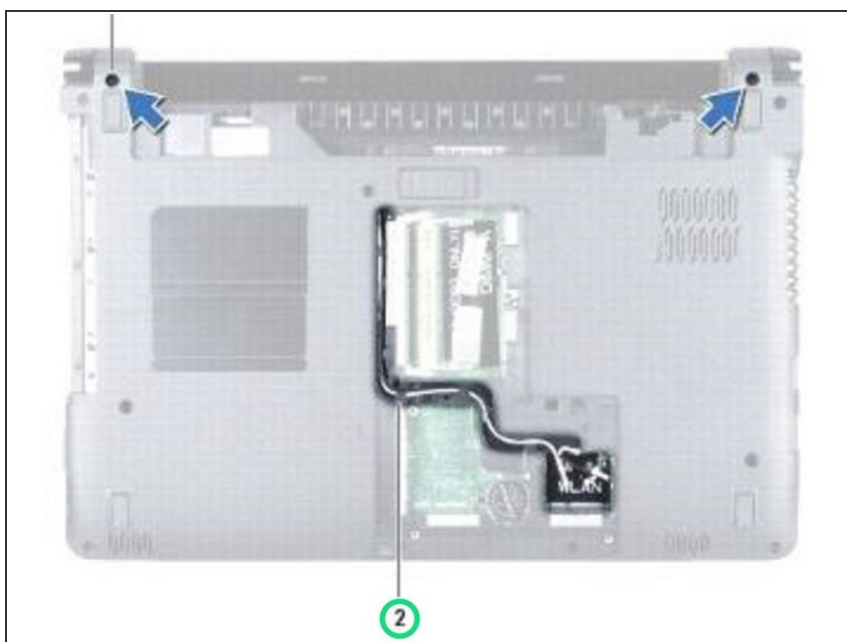
- Note the routing of the Mini-Card antenna cables and remove them from the routing guides on the bottom of the computer.

Step 2 — Remove the Screws



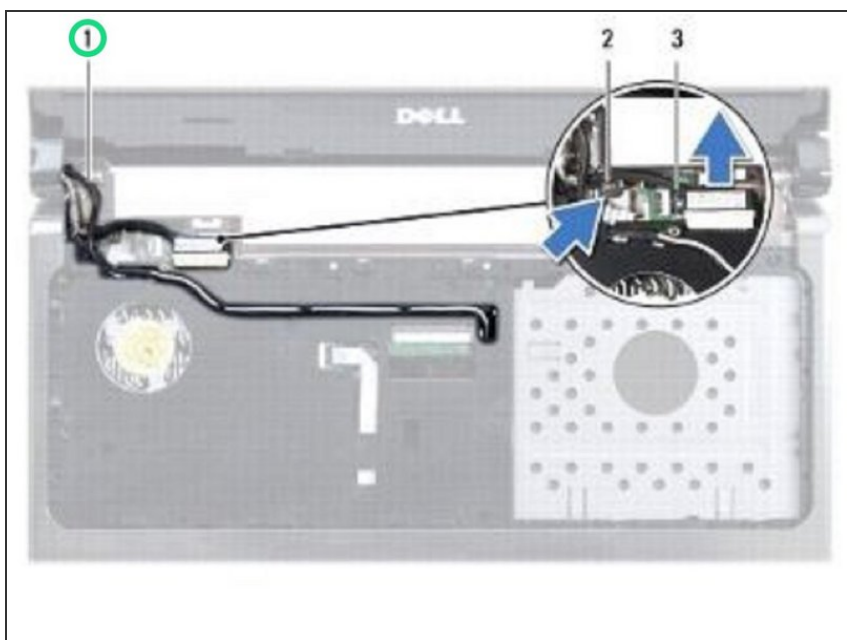
- Remove the two screws on the bottom of the computer that secure the display assembly to the computer base.

Step 3 — Pull the Cables Up



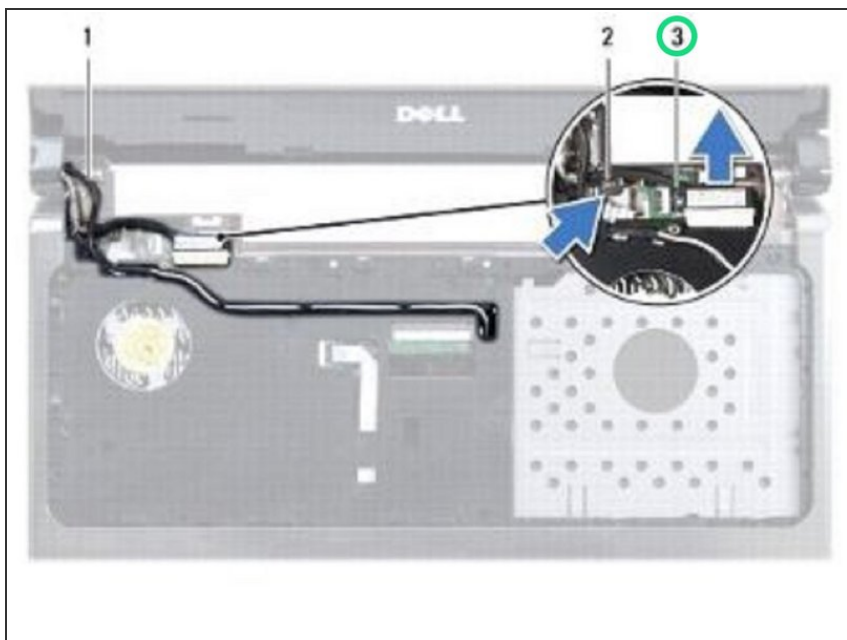
- Pull the Mini-Card antenna cables up through the slot in the computer base.

Step 4 — Note the Routing



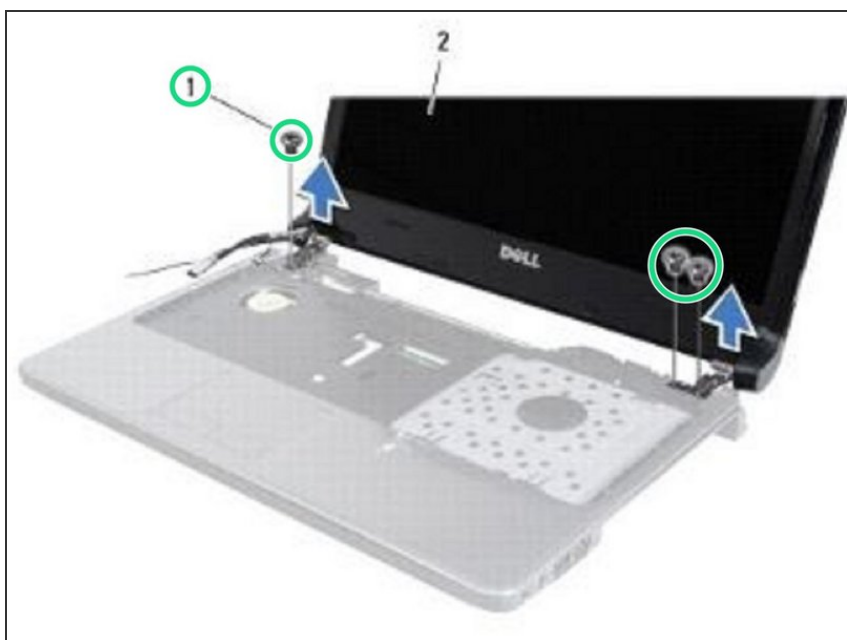
- Note the routing of the Mini-Card antenna cables and remove them from the routing guides on the palm rest.

Step 5 — Disconnect the Display Cable



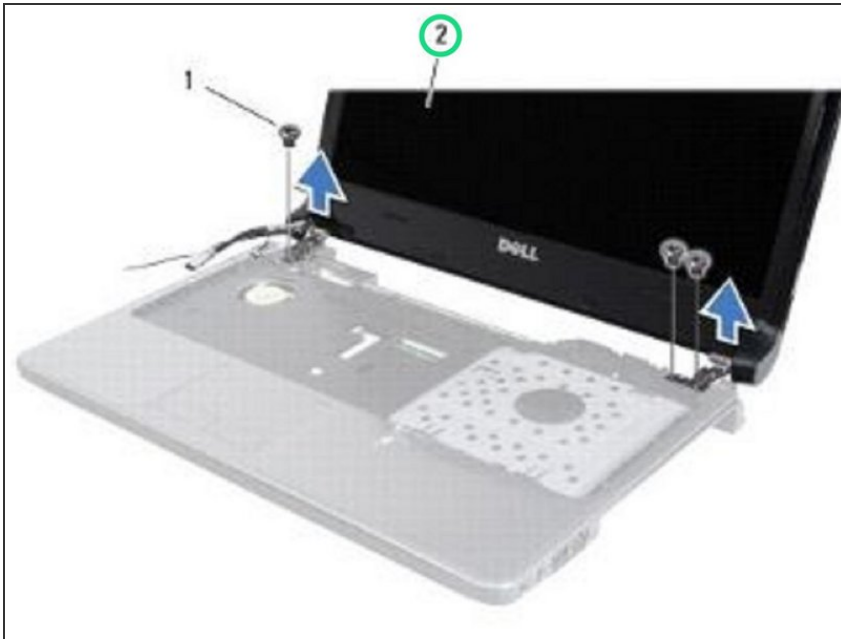
- Disconnect the display cable from the connector on the system board and remove the display cable grounding screw.

Step 6 — Remove the Screws



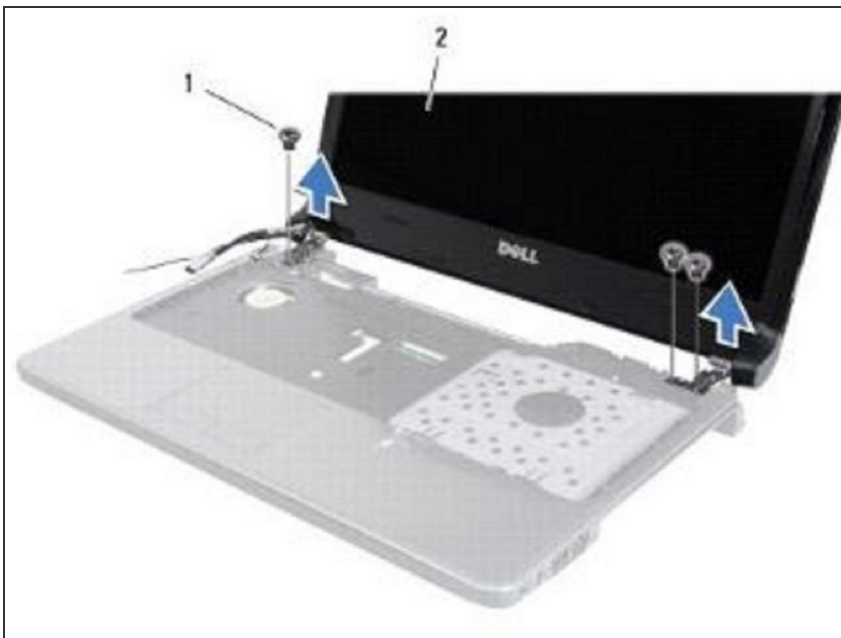
- Remove the three screws that secure the display assembly to the computer base.

Step 7 — Removing the Display Assembly



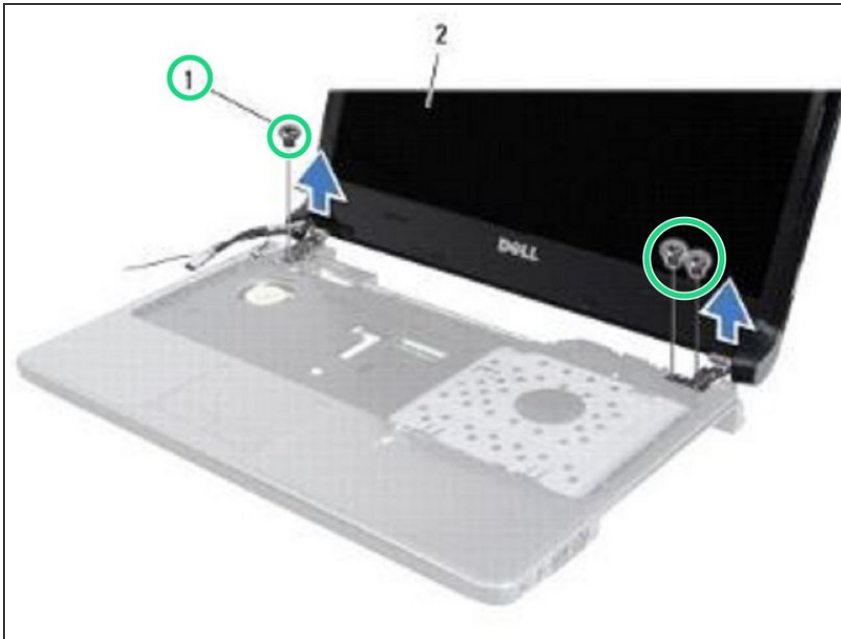
- Lift the display assembly off the alignment posts on the computer base.

Step 8 — Placing the Display Assembly



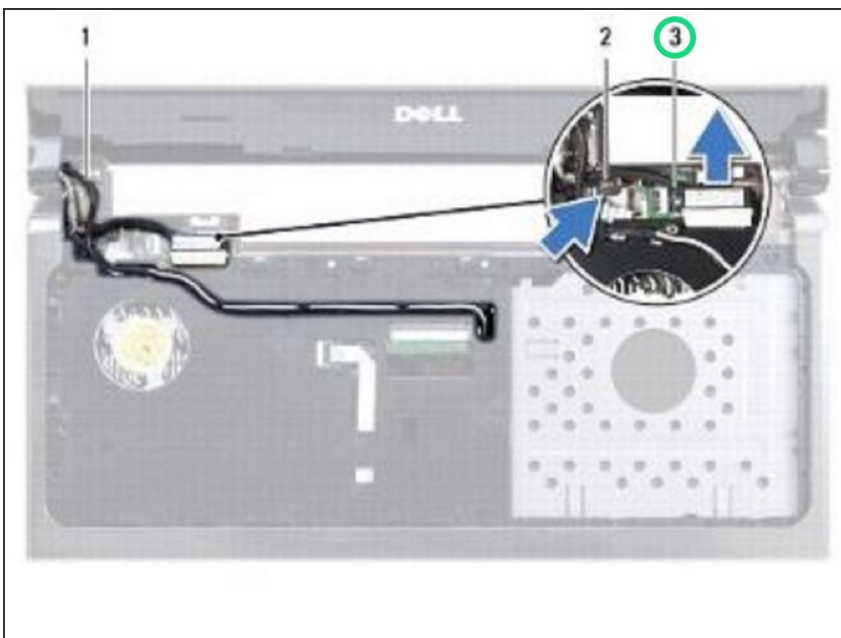
- Use the alignment posts to place the **NEW** display assembly on the computer base.

Step 9 — Replace the Screws



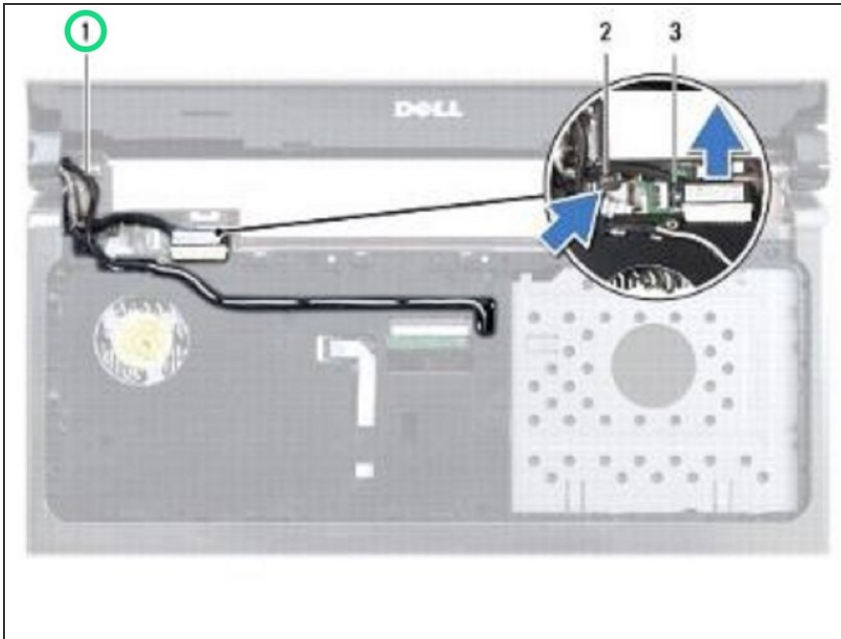
- Replace the three screws that secure the display assembly to the computer base.

Step 10 — Connecting the Display Cable



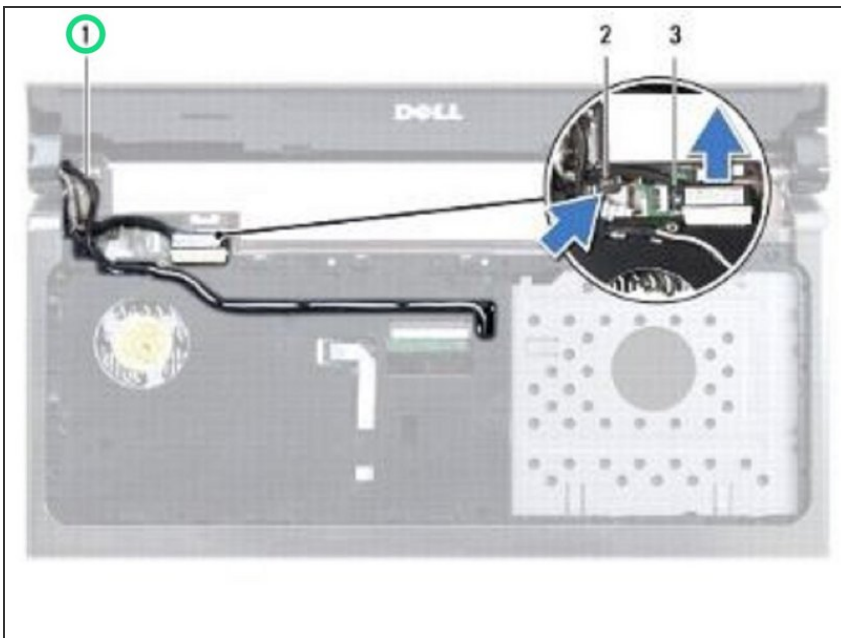
- Connect the display cable to the connector on the system board and replace the display cable grounding screw.

Step 11 — Routing the Cables



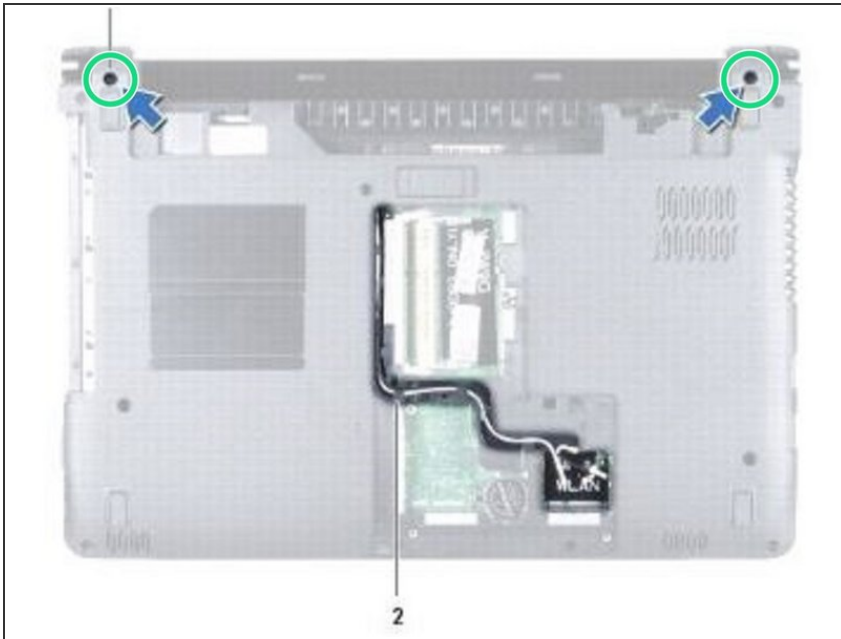
- Route the Mini-Card antenna cables through the routing guides on the palm rest.

Step 12 — Thread the Cables



- Thread the Mini-Card antenna cables through the slot in the computer base.

Step 13 — Replace the Screws



- Turn the computer over and replace the two screws that secure the display assembly to the computer base.