



Wolf Gourmet WGTR102S Slide Assist Plunger Replacement

Details how to replace the slide assist plunger for the Wolf Gourmet WGTR102S Toaster.

Written By: Ryan Funchess



INTRODUCTION

If your toast rack does not slide up all the way, or your toast pops up too fast, try replacing the slide assist plunger with this guide.



TOOLS:

- [Y1 Tri-point Screwdriver](#) (1)
 - [Metal Spudger Set](#) (1)
 - [Large Needle Nose Pliers](#) (1)
-

Step 1 — Outer Shell



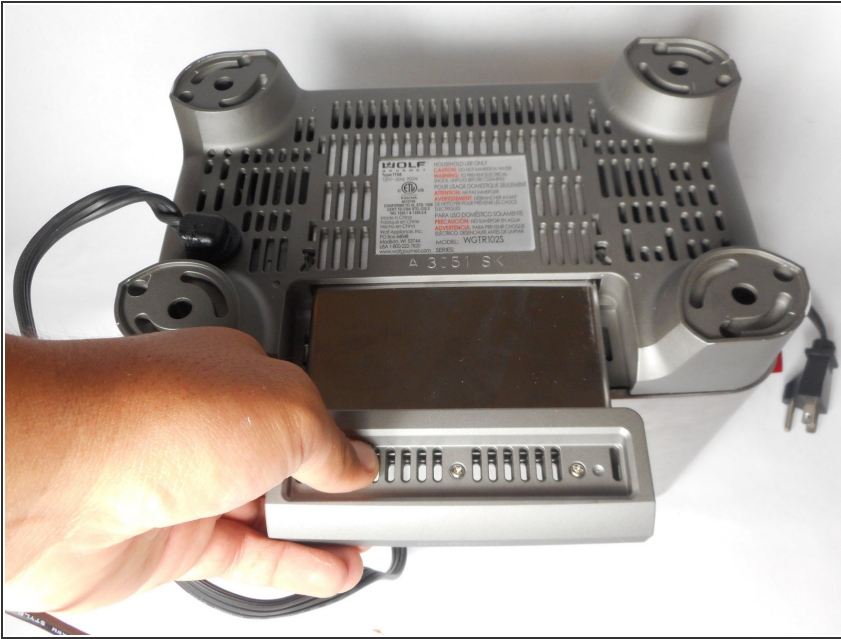
- Using a wedge, pry off the rubber pieces on the bottom of each foot of the toaster.

Step 2



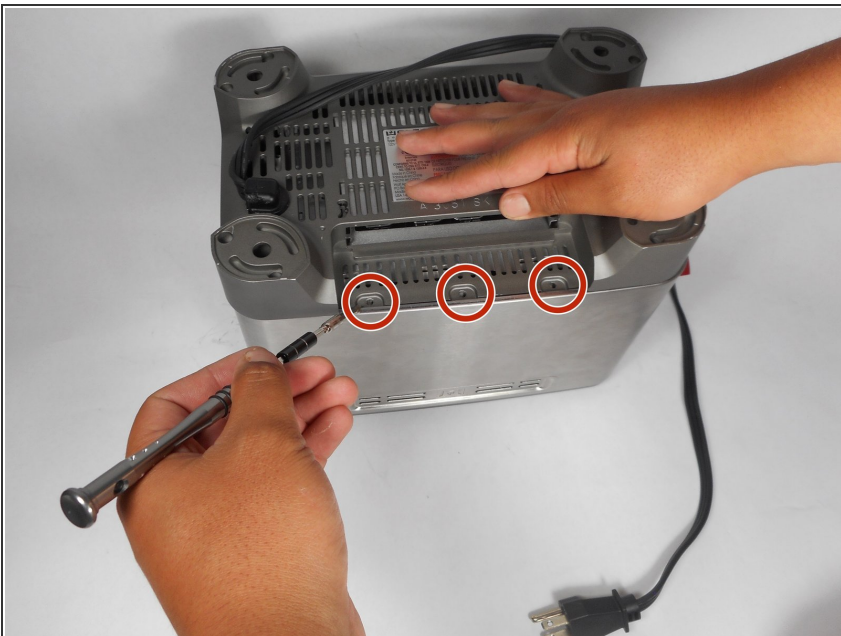
- Remove the eight 8mm screws on each toaster foot using a Tri-point Y1 screwdriver.

Step 3



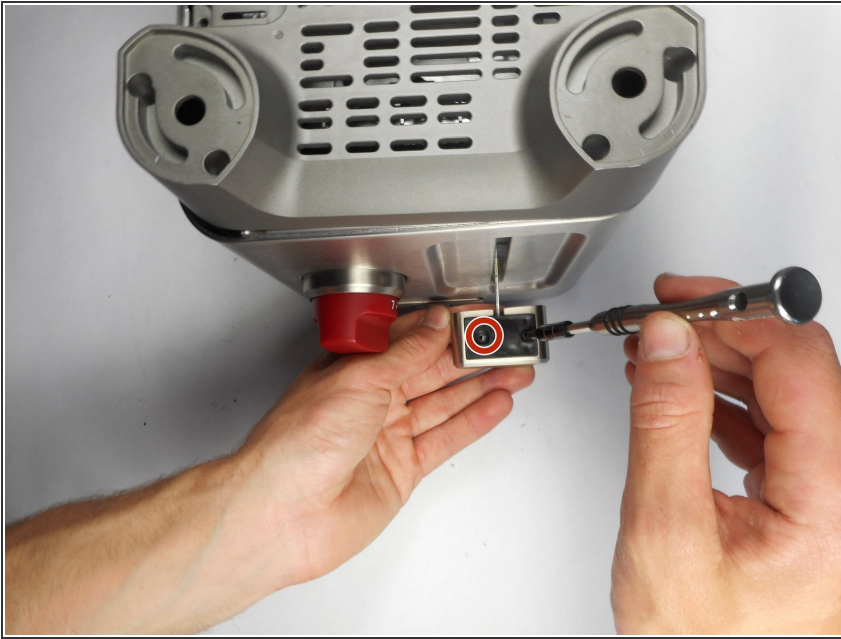
- Remove the crumb collector located on the bottom of the toaster.

Step 4



- Remove the three 8mm screws using the Tri-point Y1 screwdriver.

Step 5



- Remove the two 8mm screws on the bottom of the slide lever using a Tri-point Y1 screwdriver.
- Once the screws are removed, detach the black plastic cover on the bottom of the slide lever.

Step 6




- Remove the final 8mm screw in the slide lever.
- The lever can now pull away from the entire unit.

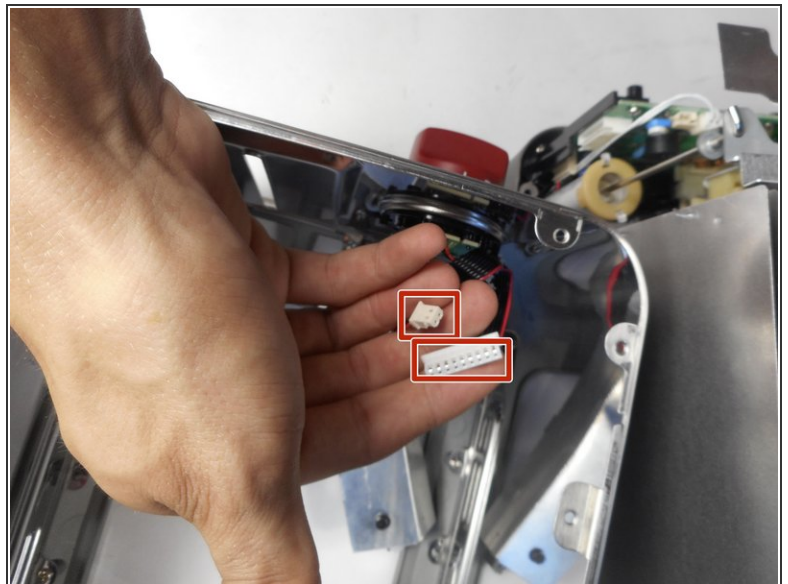
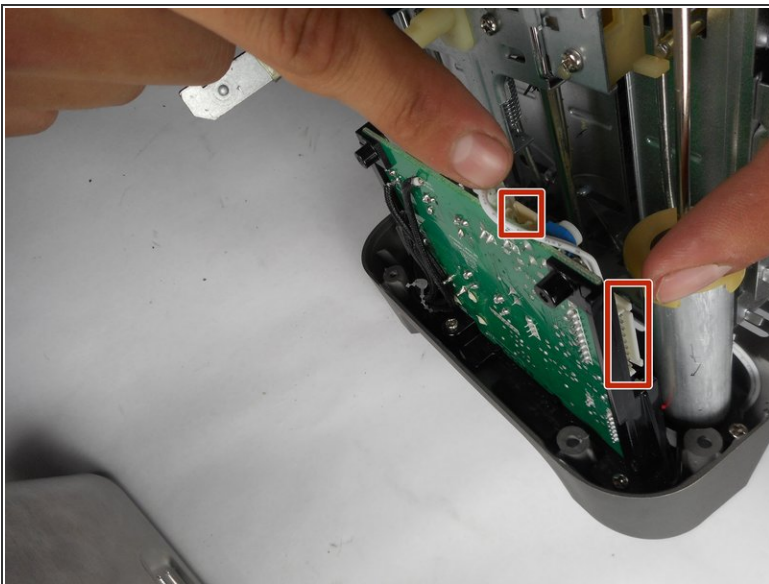
Step 7



- Remove toaster's outer shell by lifting straight up.

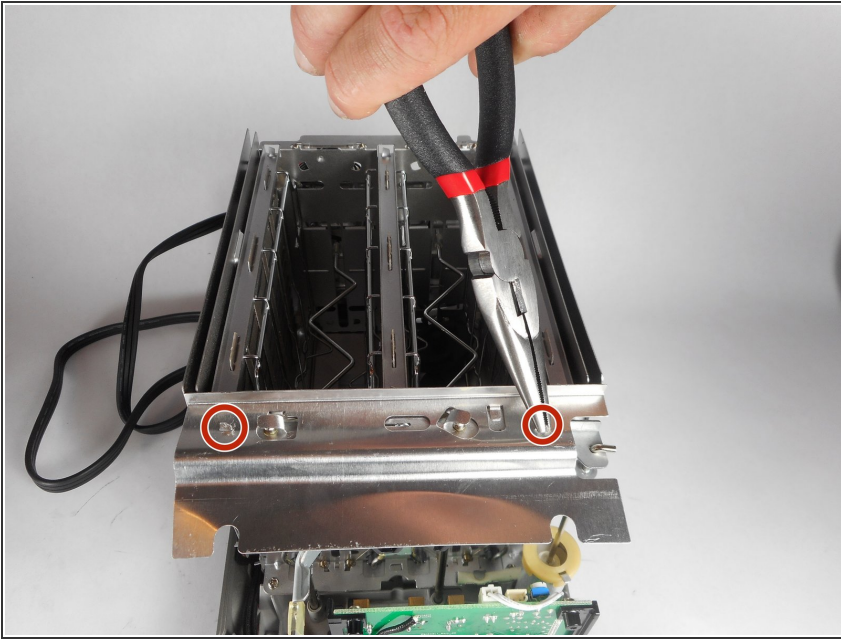
 Slowly remove the outer shell. Disconnect ground wire before fully separating the shell and inner components.

Step 8



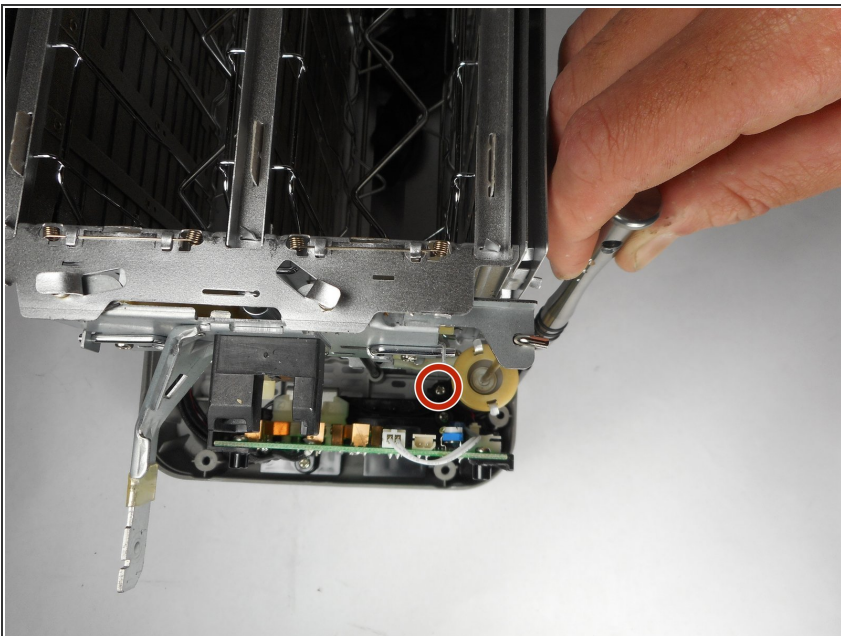
- Disconnect the wire cluster that connects the lights and circuit board by pulling apart the two plastic connectors.
- Remove the outer shell from the device.

Step 9 — Slide Assist Plunger



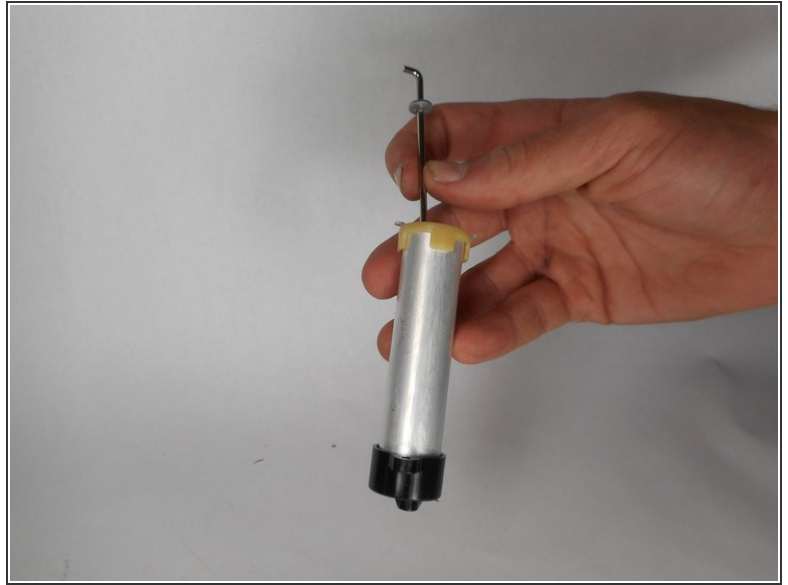
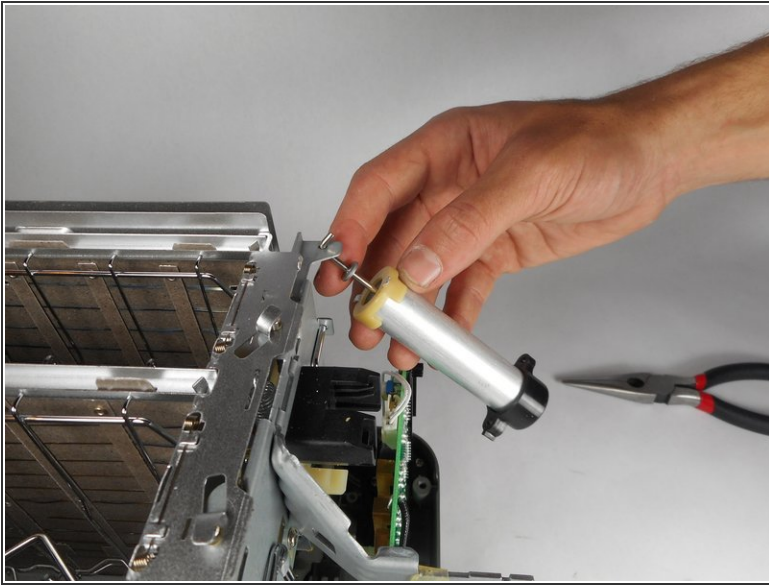
- Remove the top panel by bending the tabs on each side straight up.

Step 10



- Remove the two 8mm screws on the bottom of the plunger using a Tri-point Y1 screwdriver.

Step 11



- Remove the plunger from the device.

To reassemble your device, follow these instructions in reverse order.