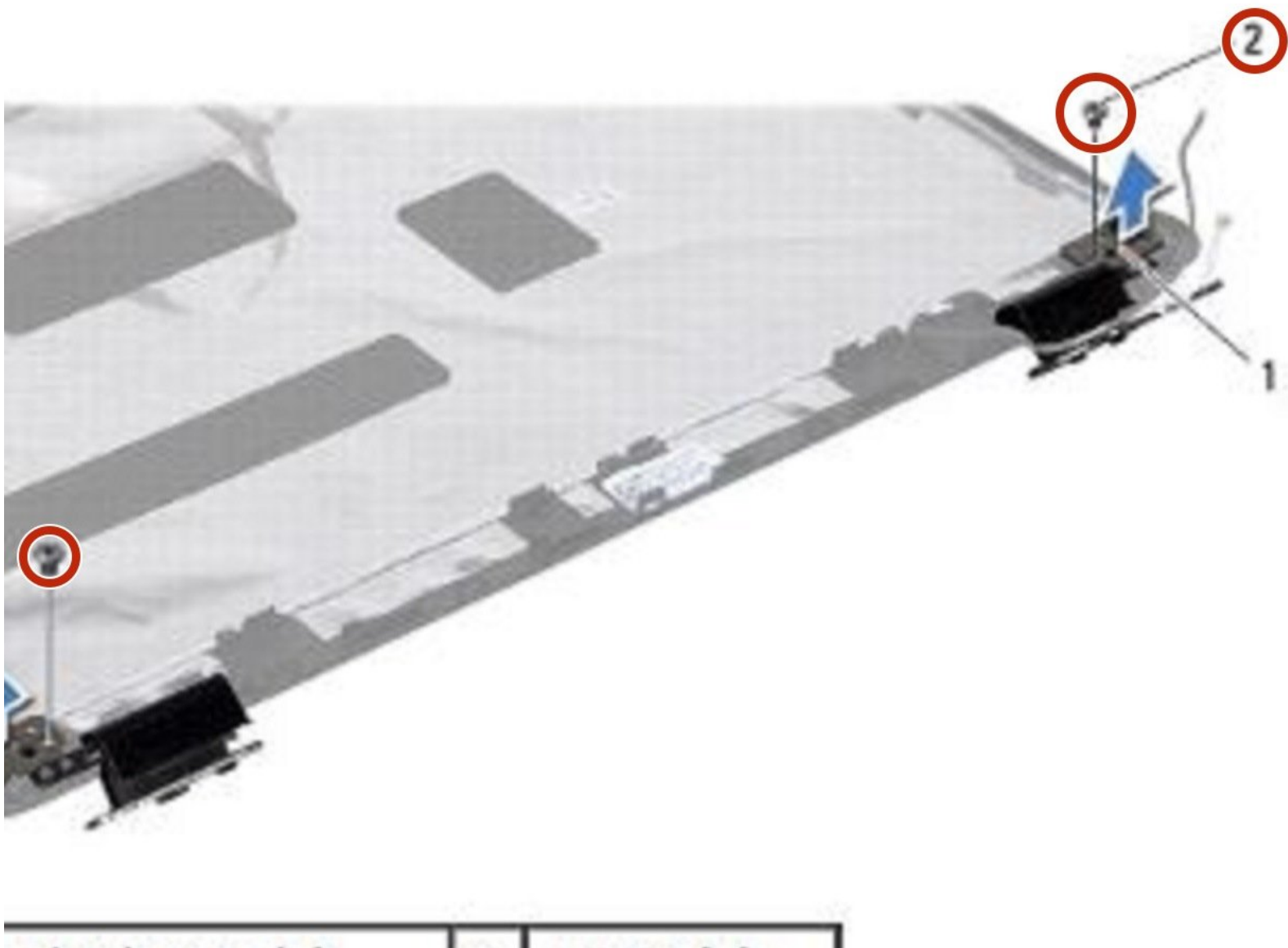




Dell Inspiron 14 M4010 Display Hinges Replacement

Written By: Terrence15



INTRODUCTION

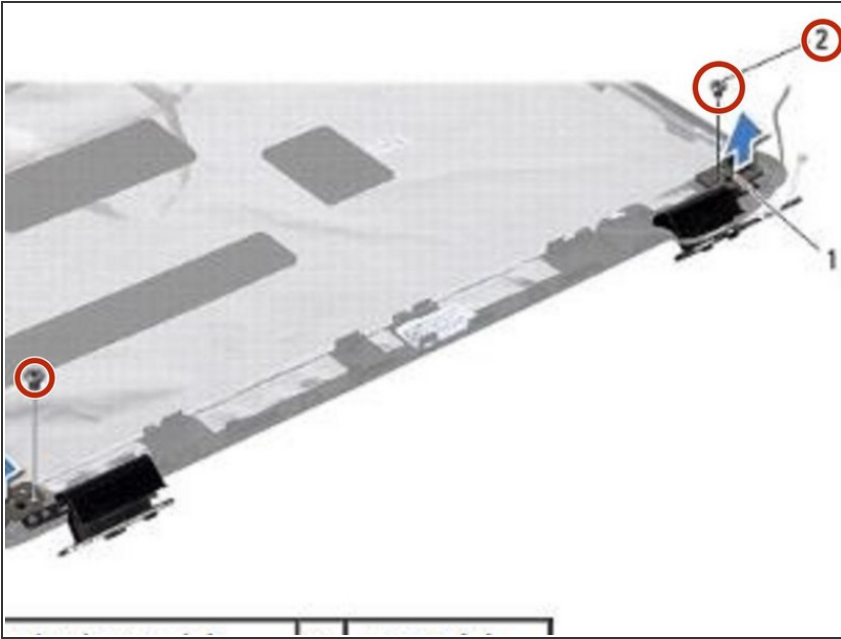
In this guide, we will show you how to remove and replace the Display Hinges.



TOOLS:

- [Phillips #0 Screwdriver](#) (1)
-

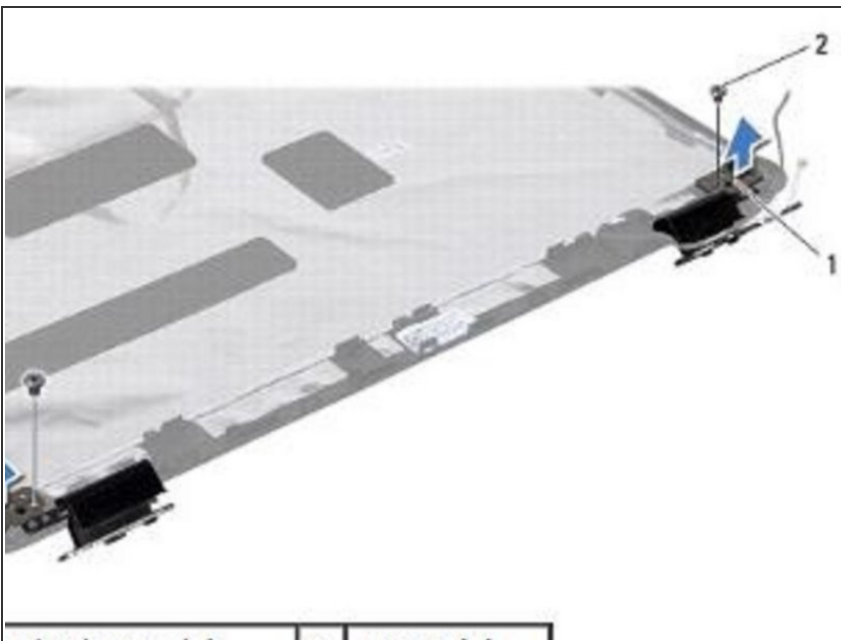
Step 1 — Remove the Screws



⚠ Follow the instructions in [Before You Begin.](#)

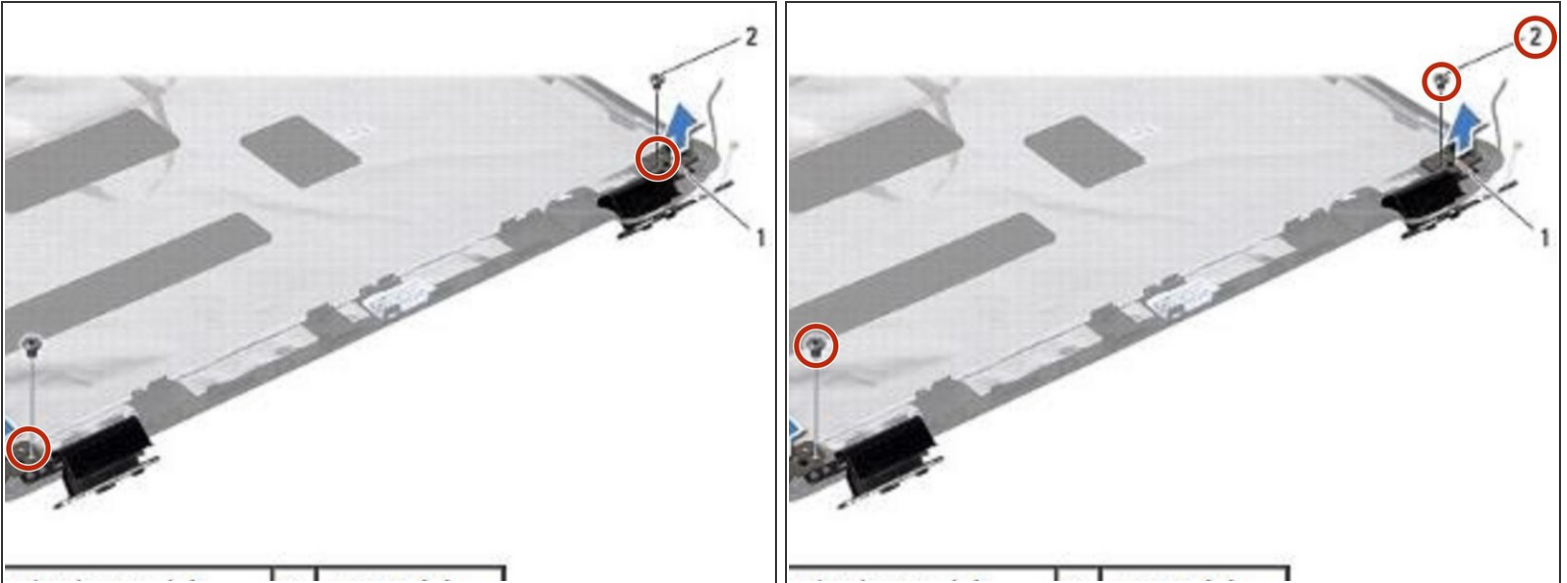
- Remove the two screws (one on each side) that secure the display hinges to the display cover and remove the display hinges.

Step 2 — Routing the Antenna Cables



- Route the Mini-Card antenna cables on the **NEW** display hinge.

Step 3 — Align the Screw Hole



- Align the screw hole on the display hinges with the screw hole on the display cover and replace the two screws (one on each side).

⚠ CAUTION: Before turning on the computer, replace all screws and ensure that no stray screws remain inside the computer. Failure to do so may result in damage to the computer.