



# LG env2 vx9100 Front Keyboard Replacement

This guide explains the steps required to install the front keyboard.

Written By: Reed Williston



---

# INTRODUCTION

In this guide you will be removing the front panel from the rest of the phone to access the front keyboard.




## TOOLS:

- [Phillips #0 Screwdriver](#) (1)
  - [Spudger](#) (1)
-

## Step 1 — Battery



 Before disassembling your phone, be sure it is powered off to avoid minor electric shock or possible fire.

- Place the phone face down on the table.
- Use your fingernail or an opening tool to pull down the tab below the battery.
- Lift the battery out.

## Step 2 — Back Panel



- Locate the five rubber covers on the back panel of the phone.
- Use the metal probe to pop out each rubber cover to reveal the screws underneath.

## Step 3



- Locate the six 2.5mm screws on the back panel of the phone.
- Use a #00 Phillips screwdriver to remove each 2.5mm screw.

## Step 4



- Locate the seam around the edge of the phone.
- Insert the plastic opening tool into the seam and pry gently to release the tabs.
- Work your way around the phone until all tabs are released.
- Remove the back panel of the phone.



## Step 5 — Front Panel



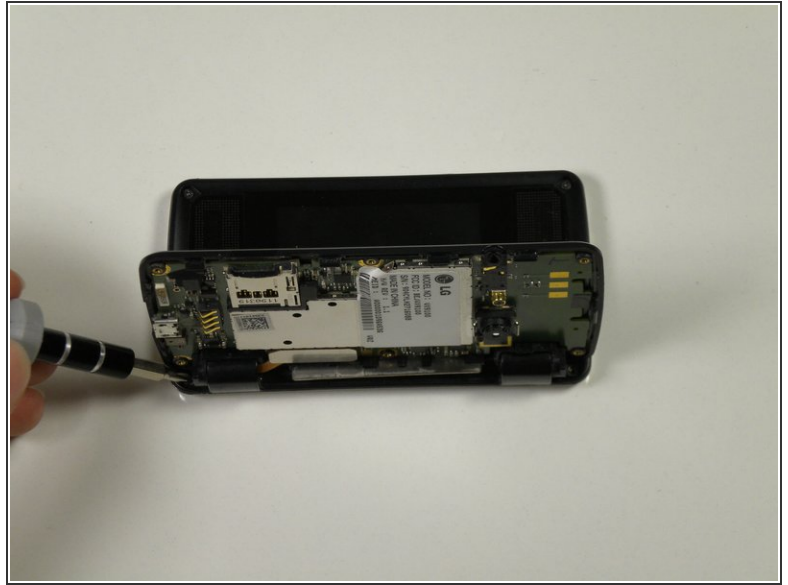
- Use a spudger to pry the two rubber covers out of the device.

## Step 6



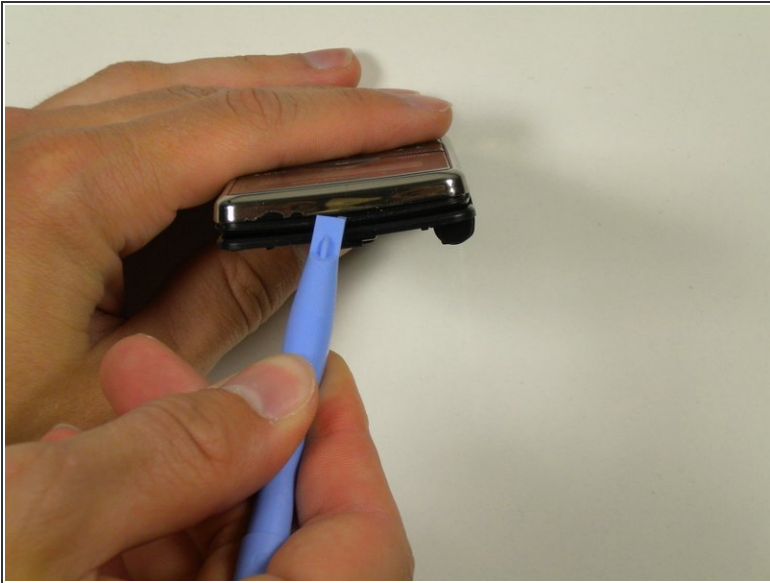
- Use a Phillips #00 screwdriver to remove two 2.5 mm screws.

## Step 7




- Use a Phillips #00 screwdriver to remove two 2.5 mm screws.
- ⓘ These screws will not be visible or accessible unless the two sides of the phone are at approximately 90 degrees relative to each other.

## Step 8

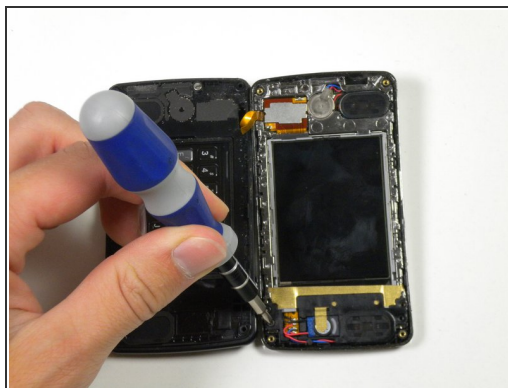


- Insert the plastic opening tool in the crease and move it along each edge of the phone.
- Separate the front panel from the rest of the phone.

 Be careful not to damage the orange ribbon that connects to the motherboard through the hinge in the phone. If the ribbon is damaged, the phone will not function properly.

- Open the phone to reveal the inside monitor.

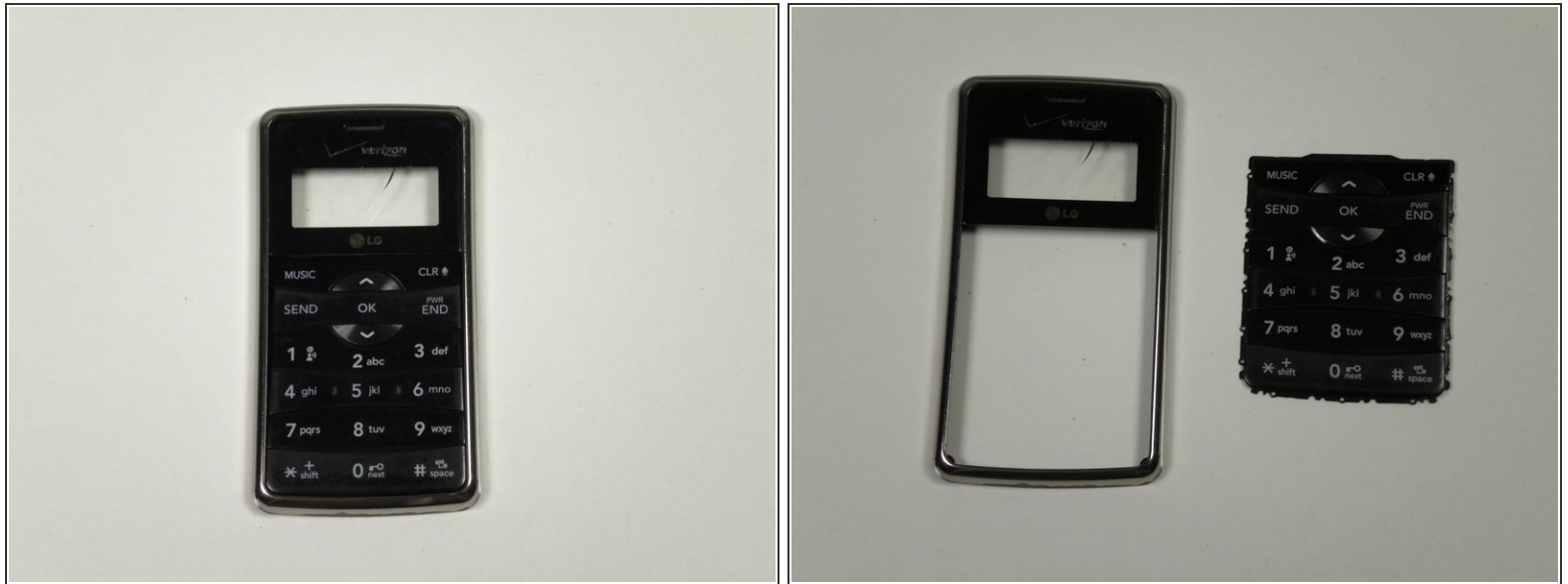
## Step 9



- Use a Phillips #00 screwdriver to remove two 2.5mm screws.
- Using your hands, separate the front panel from the phone by carefully pulling it straight off.



## Step 10 — Front Keyboard



- Place the front panel so that the buttons face upwards.
- Push on the buttons to remove the keyboard from the front cover.

To reassemble your device, follow these instructions in reverse order.