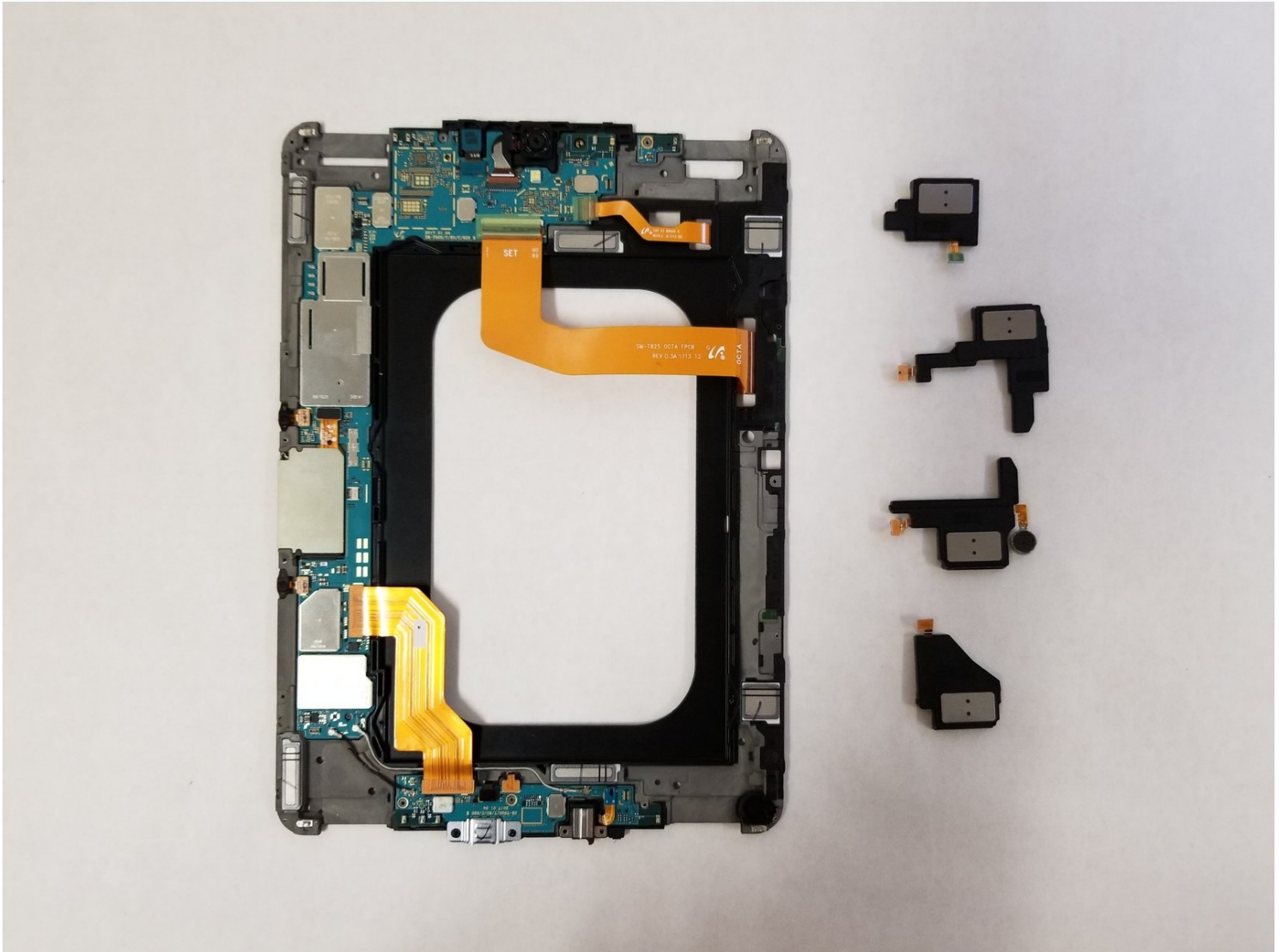




Samsung Galaxy Tab S3 Speaker Replacement

The Galaxy Tab S3 has four speakers which...

Written By: Mimi Fucini



INTRODUCTION

The Galaxy Tab S3 has four speakers which provide stereo sound. Two of the speakers are located on the top of the device, and the other two are located on the bottom. If the tablet won't play audio correctly through the built-in speakers, you may need to replace some or all of the modules. This guide will show you how to remove and replace them properly.

TOOLS:

[Phillips #000 Screwdriver](#) (1)
[iOpener](#) (1)
[Microwave](#) (1)
[iFixit Opening Tool](#) (1)
[Plastic Cards](#) (1)
[Spudger](#) (1)


PARTS:

[Samsung Galaxy Tab S3 Speakers](#) (1)

Step 1 — Display



- To soften the adhesive holding the tablet together, heat up the edges of the glass panel using a heated **iOpener** on the edge of the device. Alternatively you can use a heat gun to loosen the adhesive.
- Leave the **iOpener** on edge for two minutes.

 Be careful not to burn yourself while handling the hot **iOpener**. For more information on the **iOpener**, use the [iOpener Instructions Guide](#).

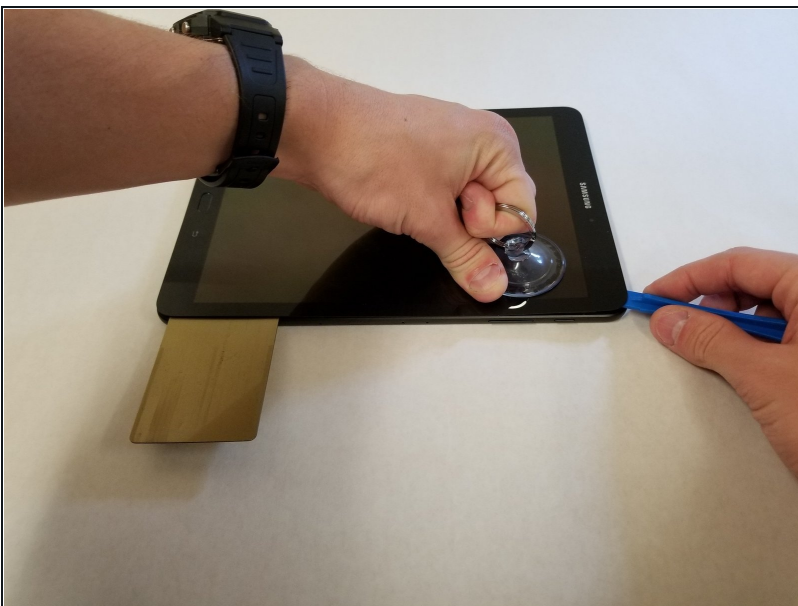
Step 2



- Place a **suction cup** near edge that you heated up with the **iOpener**.
- Press down on the **suction cup** to create a seal, and pull up with force to create a separation between the display and the midframe.
- Use an **opening tool** to split apart the glass panel from the midframe.

⚠ Be careful to not break the glass when prying from the frame.

Step 3



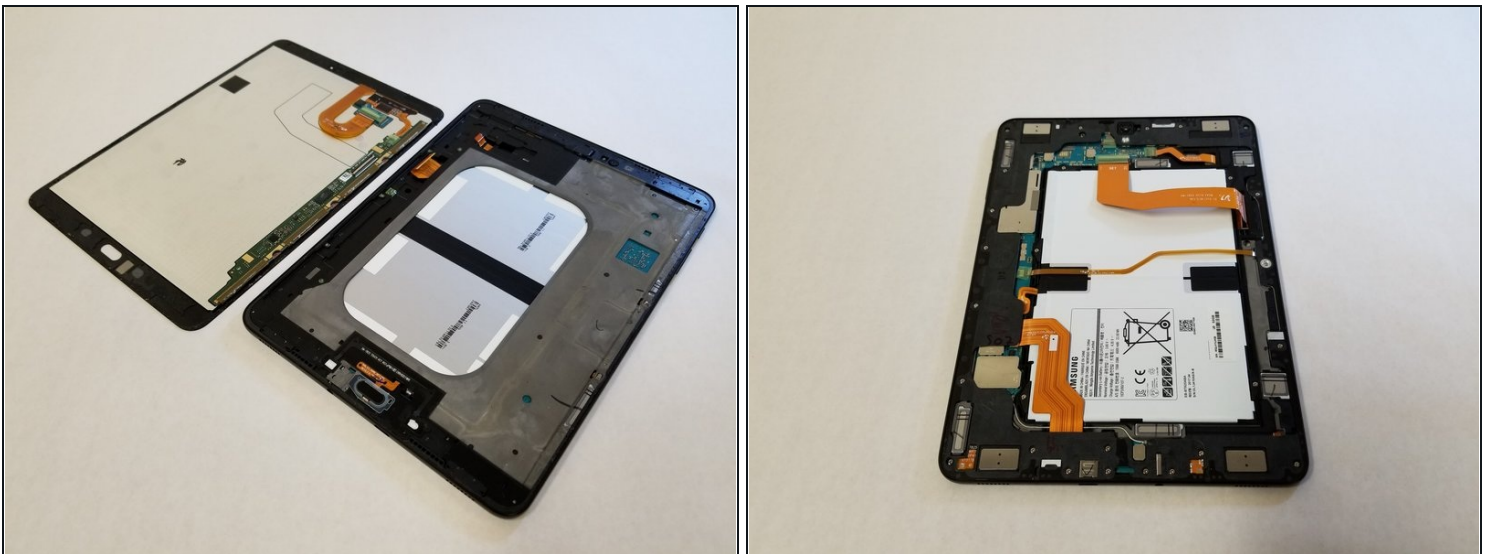
- As you continue along the edge using the **opening tool**, use a **plastic card** to keep the glass separate from the midframe.
- ① You can also use multiple **opening picks** instead of a **plastic card**.

Step 4



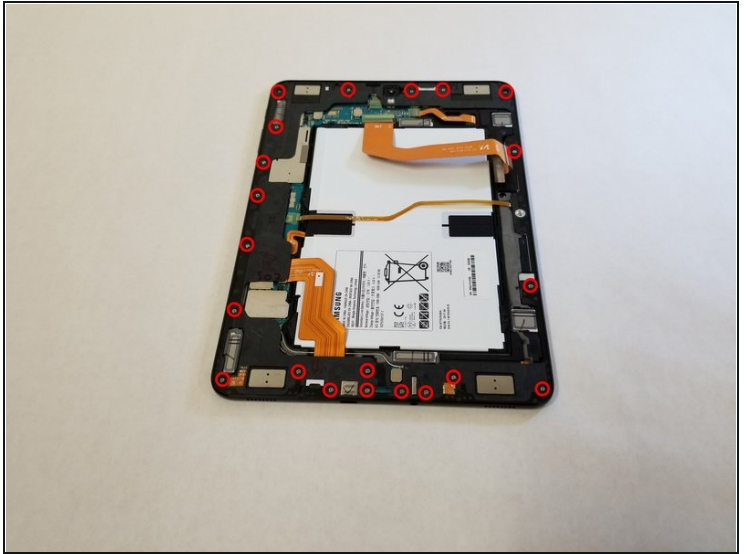
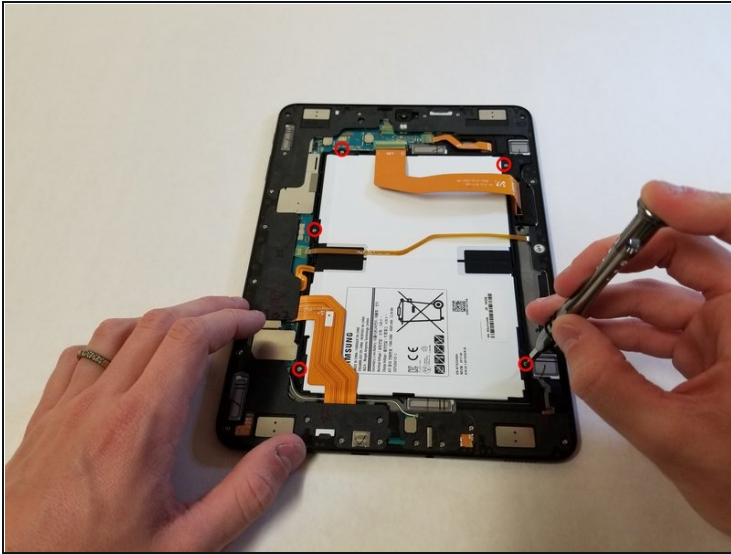
- Pull off the glass panel using the **suction cup**.
 - ① As you remove the glass panel, be careful not to tear the ribbon connecting the motherboard to the display.
- Carefully disconnect the **ribbon cable** connecting the display assembly to the motherboard. You can disconnect this ribbon from either end.

Step 5 — Rear glass panel



- Repeat steps 3 through 7 to remove the rear glass panel on the opposite side of the device.

Step 6 — Battery



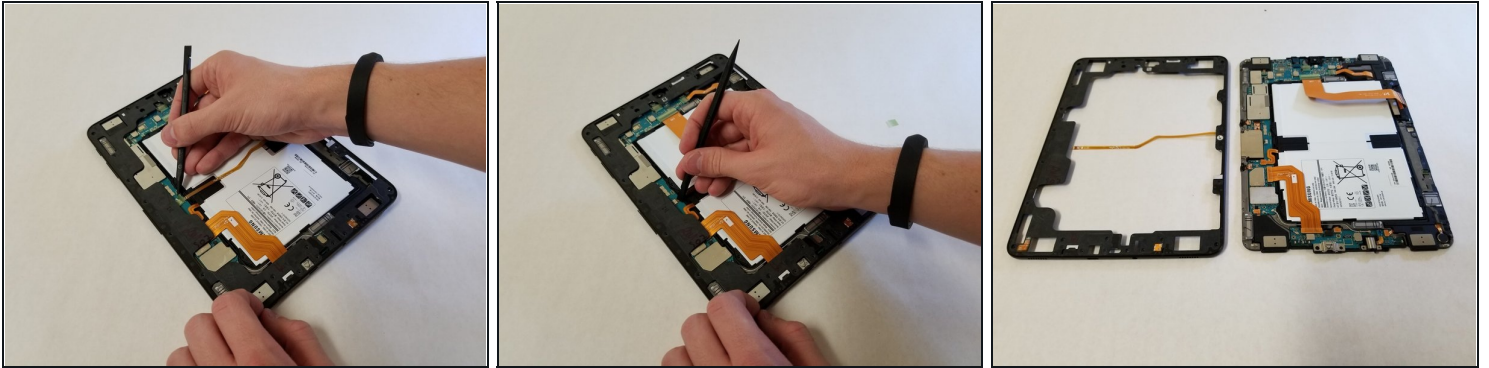
- Use a Phillips #000 screwdriver to unscrew the five screws securing the battery, and the twenty-two screws surrounding the midframe.

Step 7



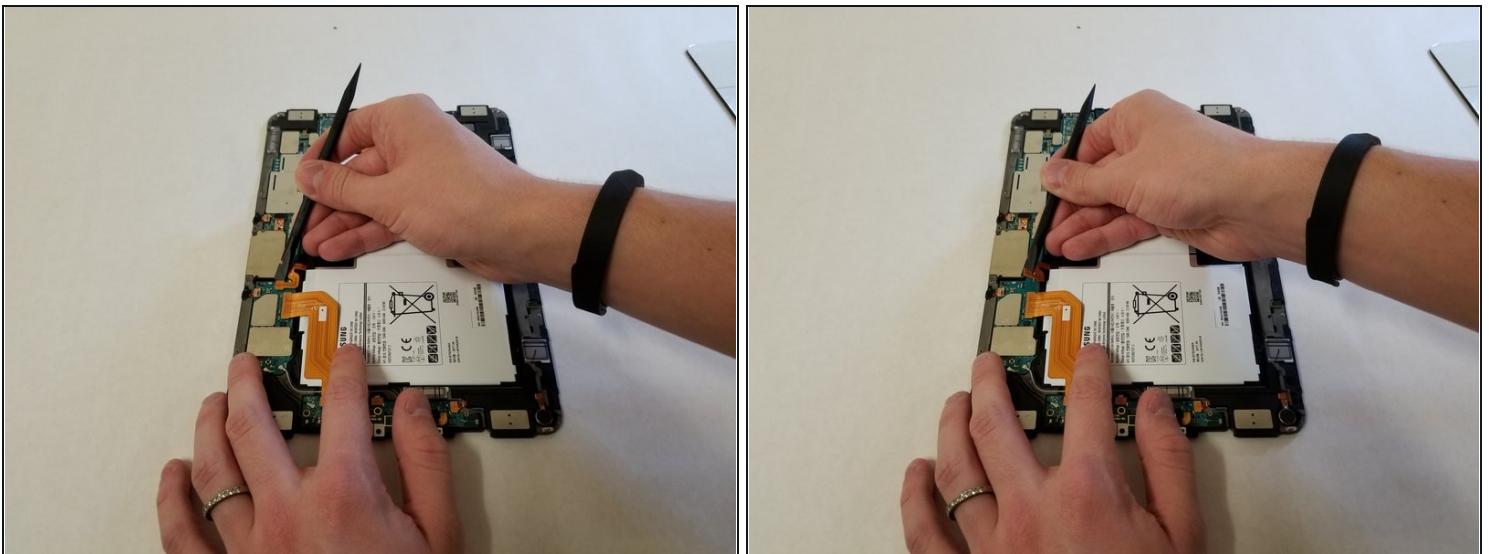
- The midframe should snap off from the device's motherboard.

Step 8



- Locate the ribbon running from the midframe and disconnect it from the motherboard with the flat end of a **spudger**.

Step 9



- Use the flat end of the **spudger** to pop off the connector between the battery and the motherboard.

Step 10



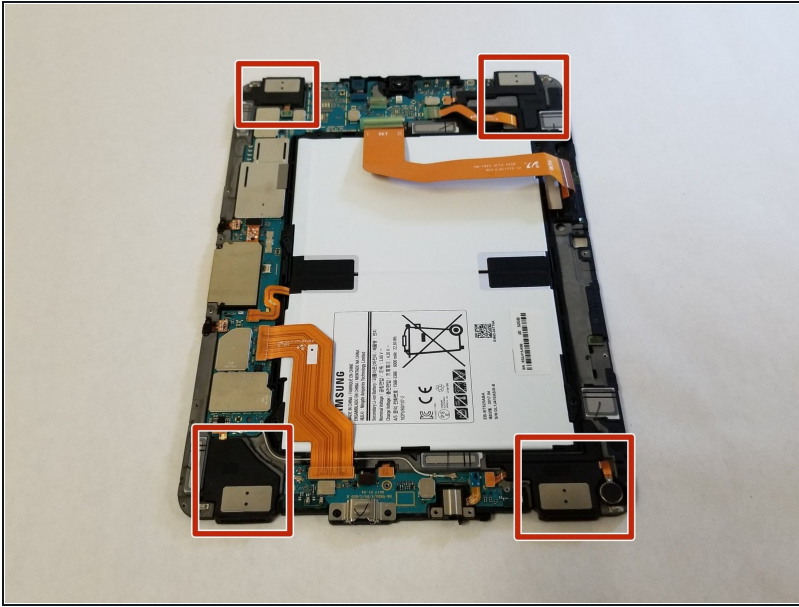
- Flip the midframe over and pop the battery out, making sure to slide it out from underneath the ribbon cables.

Step 11



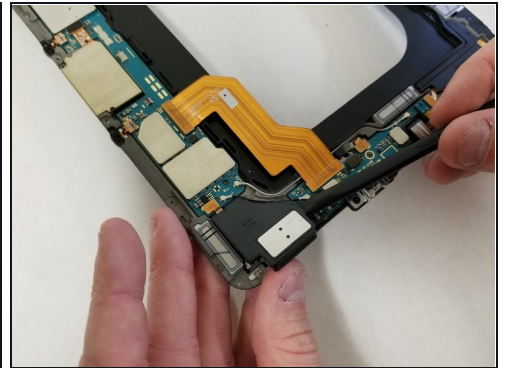
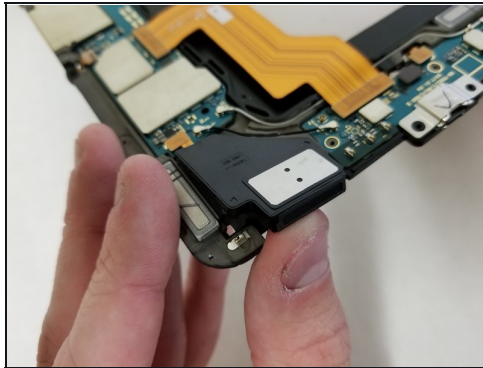
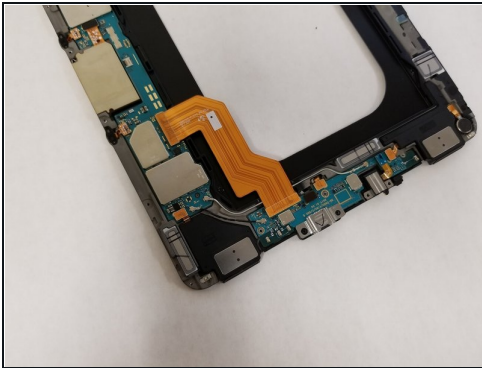
- The battery should now be removed and detached from the device.

Step 12 — Speakers



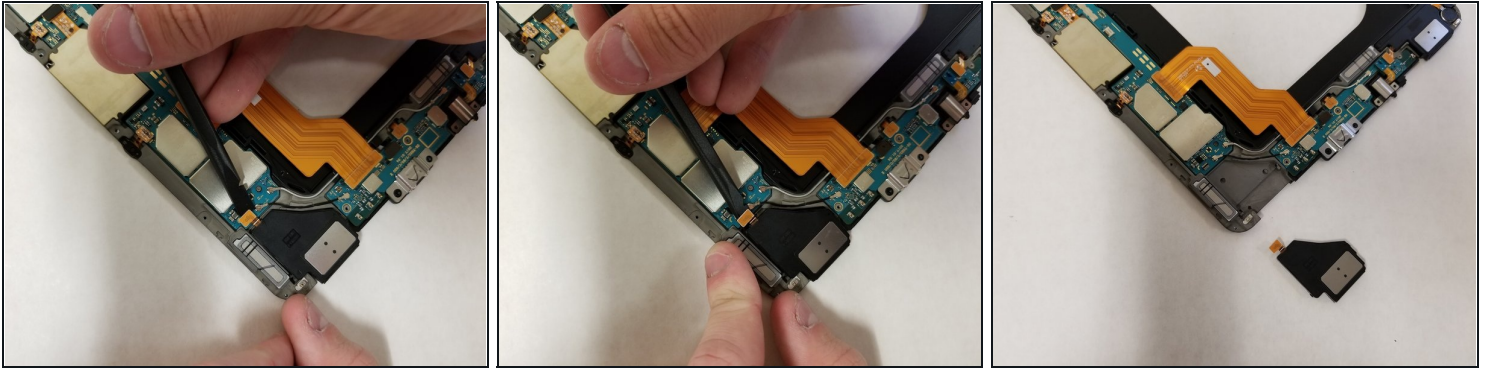
- The Tab S3 has four speakers, one located on each corner.
- ⓘ Each of the speakers is a different shape and size.

Step 13



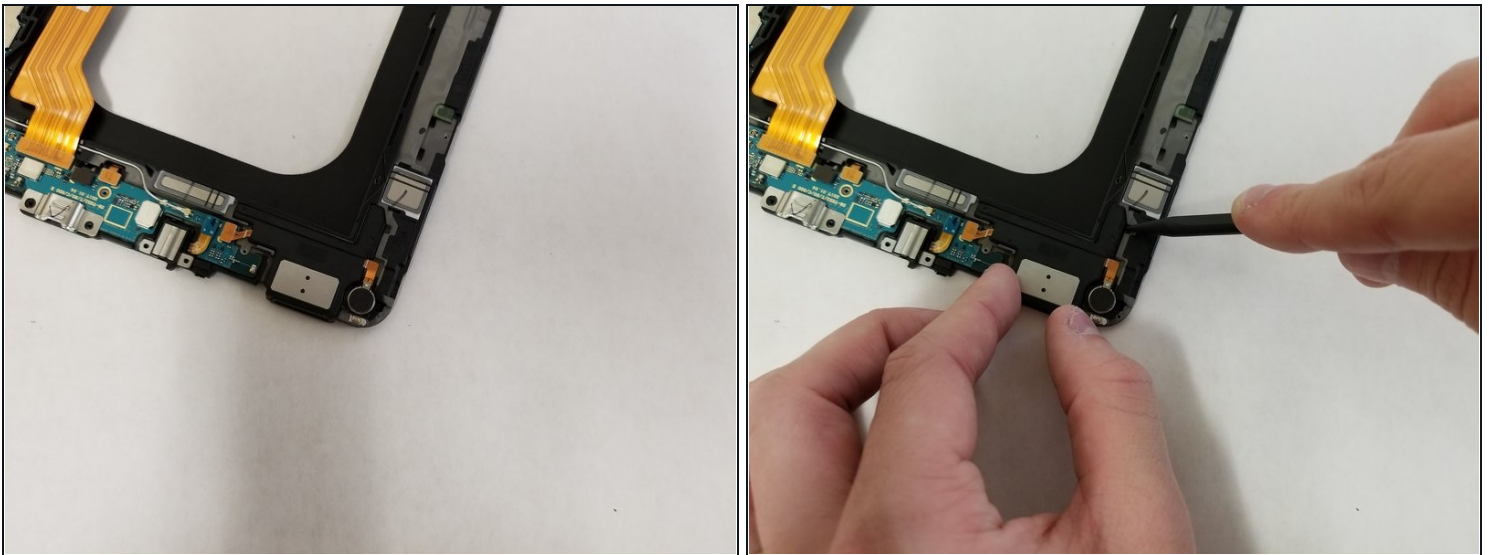
- Use your finger to snap one side of the speaker module off of the motherboard. Use the flat end of a **spudger** to snap off the other side.

Step 14



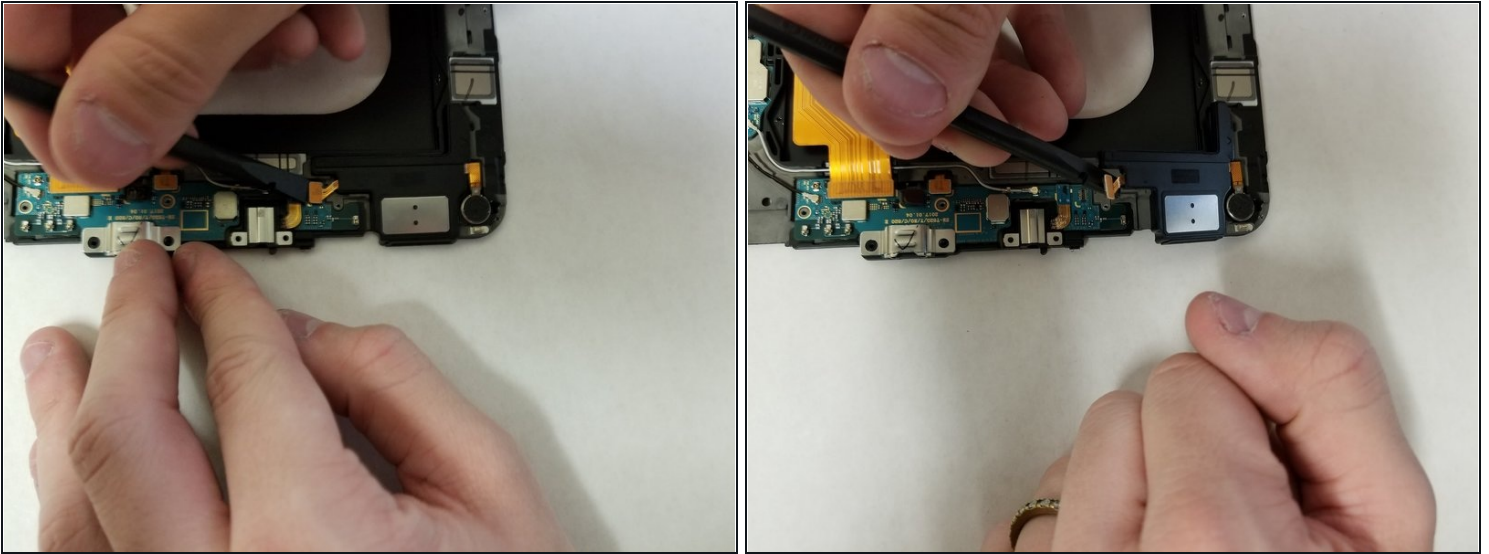
- Use the flat end of the **spudger** to disconnect the ribbon connector from the motherboard.
- Remove the speaker from the device.

Step 15



- ① The second speaker module is located on the bottom right of the device. This speaker module is attached to the vibration motor, which is what provides haptic feedback for the tablet.
- Use the flat end of the **spudger** to snap the speaker module off of the motherboard.

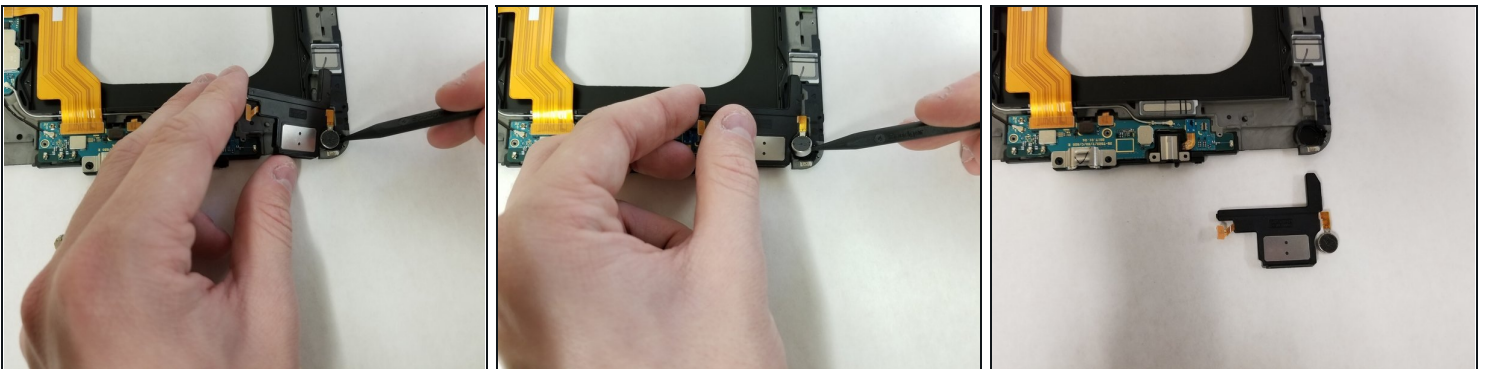
Step 16



- Use the flat end of the **spudger** to snap the ribbon connector off of the motherboard.

⚠ Be careful not to tear the cable connecting the vibration motor to the speaker module. You will not be able to remove the speaker completely until you unstick the vibration motor.

Step 17



- Use the pointy end of the **spudger** to remove the vibration motor from the motherboard.
- ① Much like the display assembly, the vibration motor is attached to the device with a good amount of adhesive, and may require some force to remove.
- Remove the speaker and the vibration motor from the device.

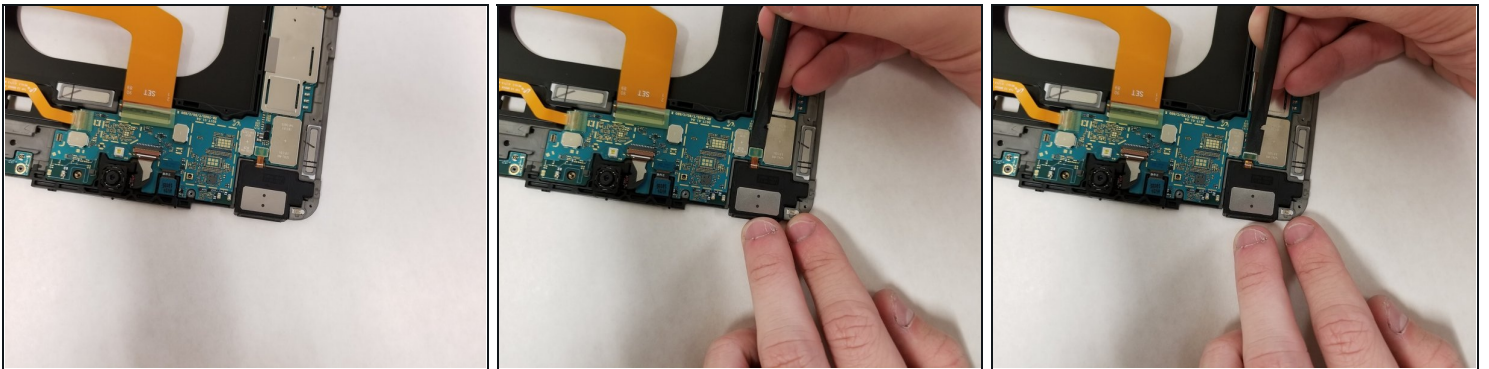
Step 18



① The third speaker module on the top right corner comes off a bit easier than the rest.

- Use the flat end of the **spudger** to snap the ribbon connector off of the motherboard and remove the speaker from the device.

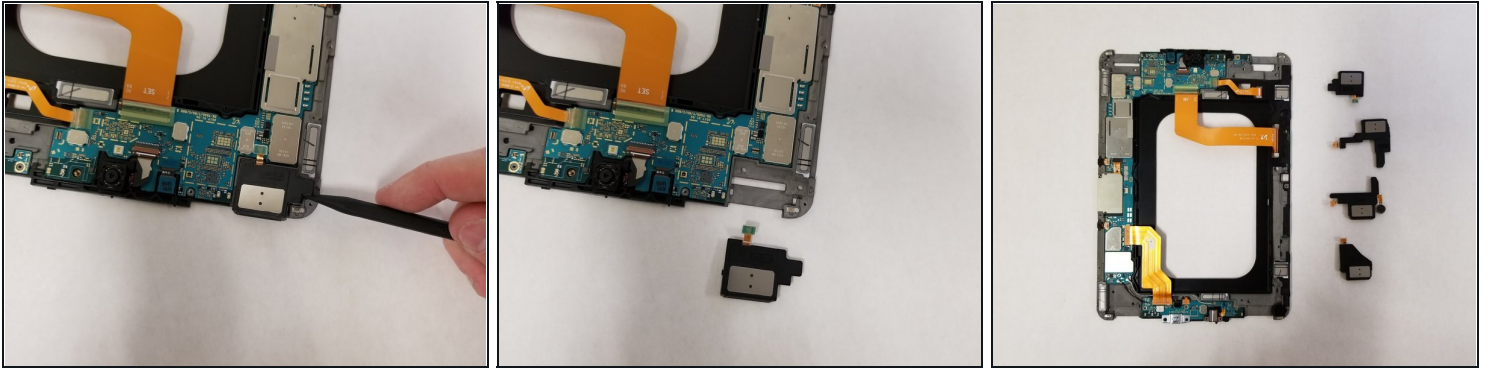
Step 19



① Only one more speaker module to go. This one is located on the top left corner.

- Use the flat end of the **spudger** to snap the ribbon connector off of the motherboard.

Step 20



- Use the pointy end of the **spudger** to snap the speaker module off of the motherboard.

To reassemble your device, follow these instructions in reverse order. If you have removed too much adhesive, you may need to apply more during the reassembly process.