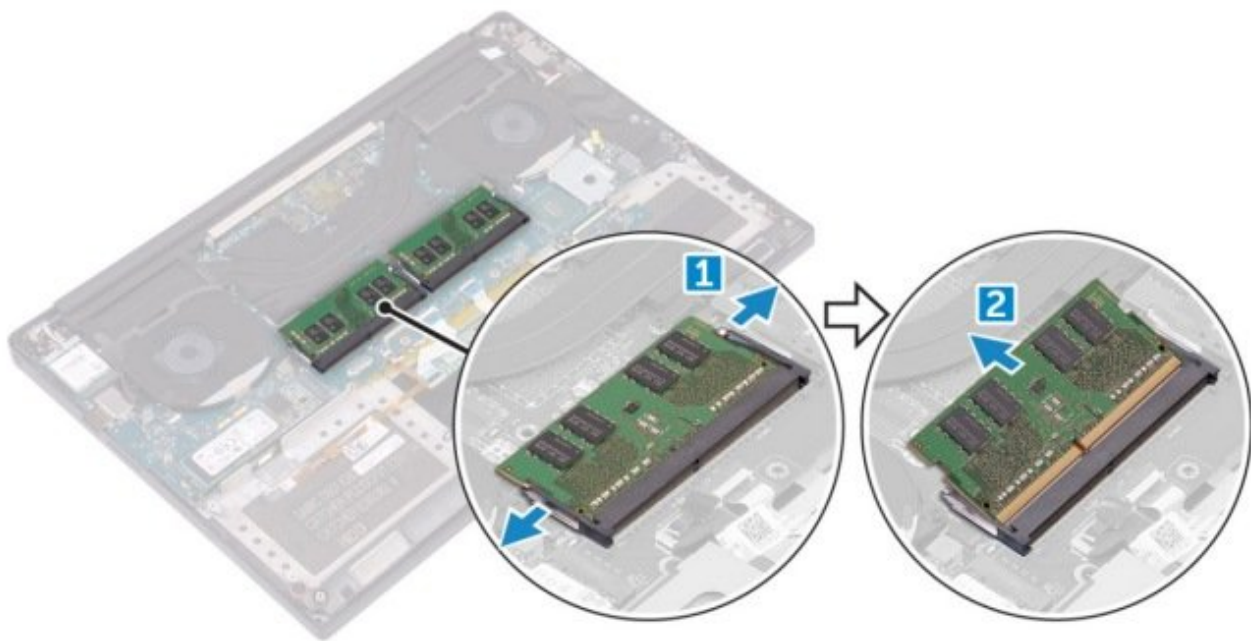




Dell Precision 5520 Memory Module Replacement

Written By: Johnathan Hammond

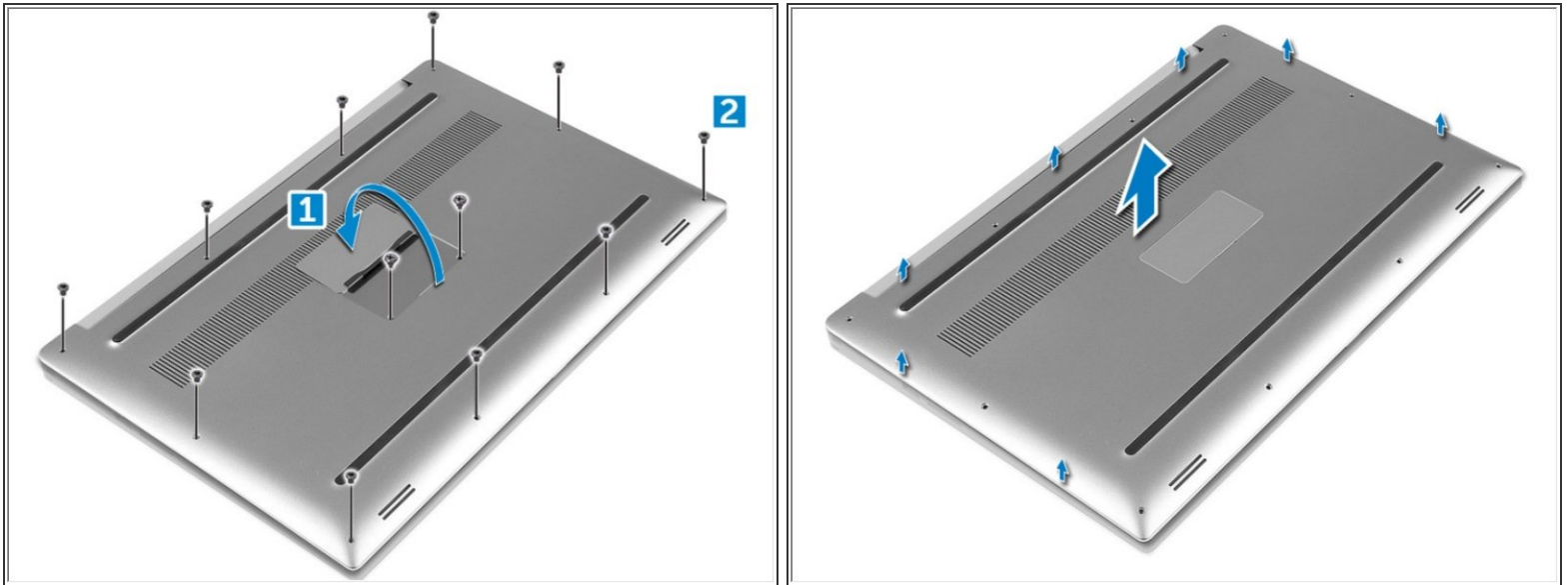




TOOLS:

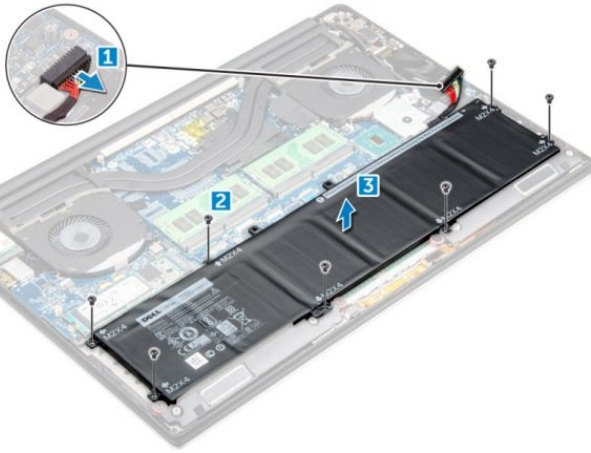
- [T5 Torx Screwdriver](#) (1)
 - [Phillips #0 Screwdriver](#) (1)
-

Step 1 — Base Cover



- i** Be sure to power off and unplug your device before you begin your repair.
- Turn the system badge flap over (1) and then remove the ten M2x3 screws that secure the base cover to the computer (2).
 - Pry the edges of the base cover and lift it to remove it from the computer.
- i** NOTE: Use a Torx #5 screwdriver for the base screws and a Phillips screwdriver for the two M2x8 screws inside the badge flap.

Step 2 — Battery



- Disconnect the battery cable from the system board [1].
- Remove the seven M2x4 screws that secure the battery to the computer [2].
- Lift the battery off the computer [3].

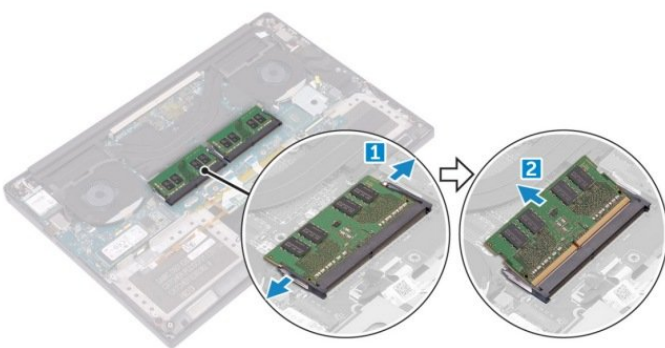
⚠ Do not apply pressure to the surface of the battery

⚠ Do not bend

⚠ Do not use tools of any kind to pry on or against the battery

ⓘ If a battery cannot be removed within the constraints above, please contact Dell technical support

Step 3 — Memory Module



- Pry the securing clips away from the memory module until it pops-up [1]. Then, remove the memory module from its connector on the system board [2].

To reassemble your device, follow these instructions in reverse order.