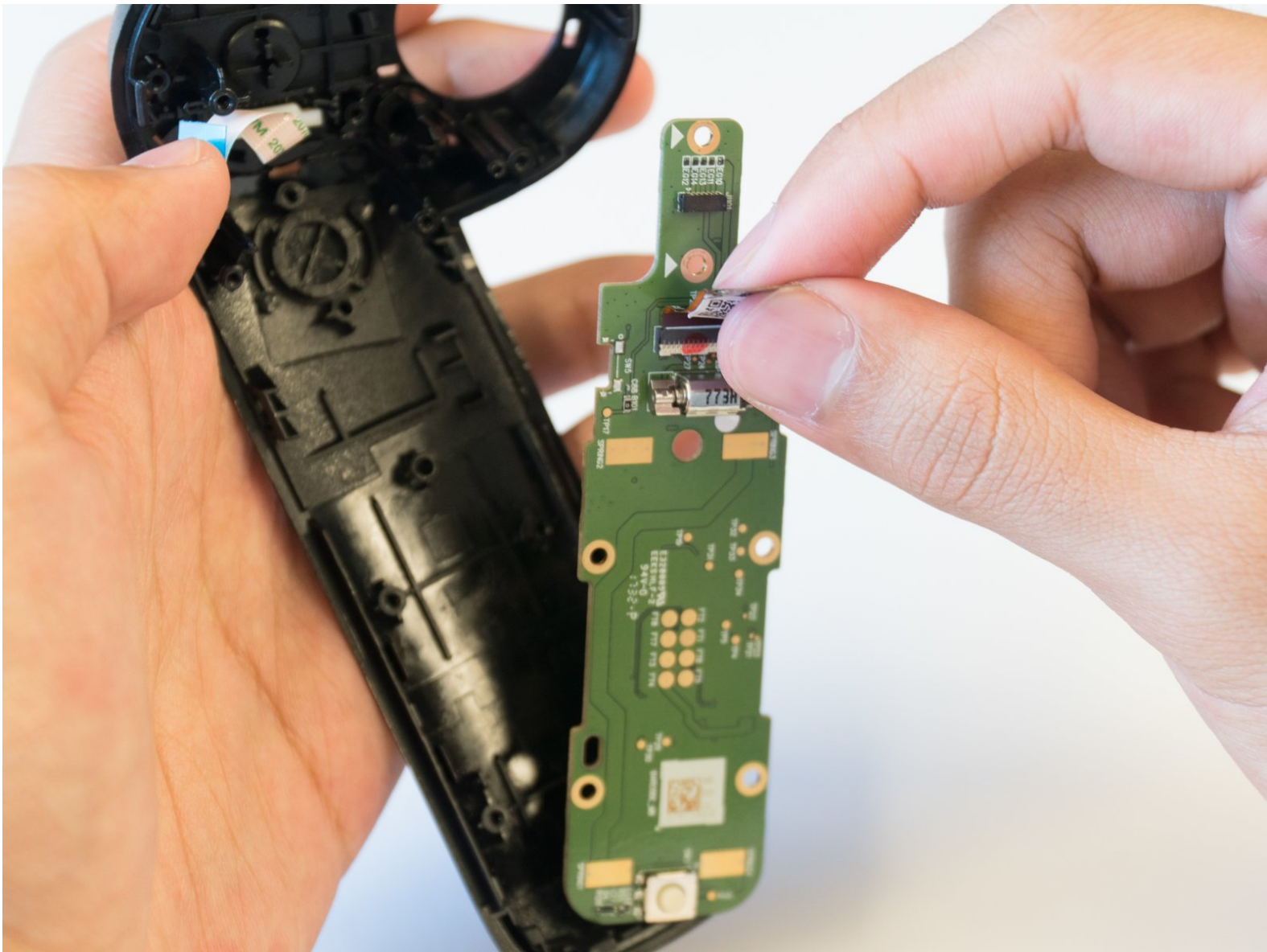




Dell VRC100-R Motherboard Replacement

If many parts of your controller, like the...

Written By: Steven Pineda



INTRODUCTION

If many parts of your controller, like the buttons and touchpad, do not function properly, you have found the correct guide. This guide requires a plastic opening tool, spudger, and Phillips #0 screwdriver head. You will not need any expert knowledge, but you will have to take apart most of your controller.



TOOLS:

- [iFixit Opening Tool](#) (1)
 - [Phillips #0 Screwdriver](#) (1)
 - [Spudger](#) (1)
-

Step 1 — Battery



- Orient your controller so that the black ring is on the bottom and the buttons are facing away from yourself.
- Place your thumb on the small arrow that is on the controller's battery cover and firmly push upwards.
- Slide the cover off and separate it from the controller.


Step 2



- Remove the right battery by pushing the positive end down and pulling the battery out toward yourself.
- Repeat the procedure for the left battery.

Step 3 — Joystick



- Hold the joystick down with your left thumb to make space for the plastic opening tool.
 - Insert the plastic opening tool into the circle above the joystick and pry upwards to lift the front panel.
 - Slide the plastic opening tool around the perimeter until you can lift the front panel.
-  You may hear a popping noise when you pry off the front panel.

Step 4



- Grab the joystick and pull away from the controller to remove it.

Step 5 — Daughterboard



- Remove one 6mm Phillips #0 screw.

Step 6



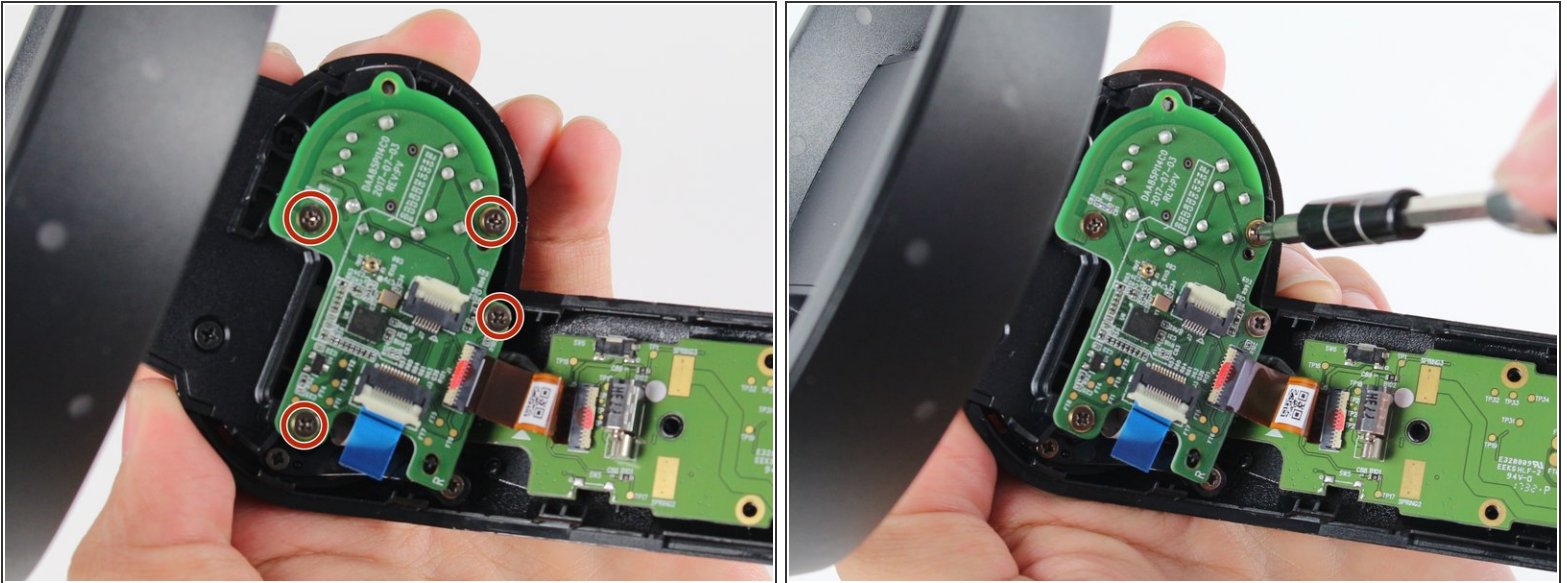
- Turn your controller over and orient it so that the thin side is on the top.
- Remove four 4mm Phillips #0 screws.

Step 7



- Turn your controller 90 degrees clockwise and insert a blue plastic opening tool into the crease of the back panel.
- Push down on the end of the plastic opening tool closest to you to lift the panel up.
- Slide the plastic opening tool around the perimeter of the back panel until you can remove it.
- ⓘ You may hear loud popping noises as the back panel separates from the controller.

Step 8



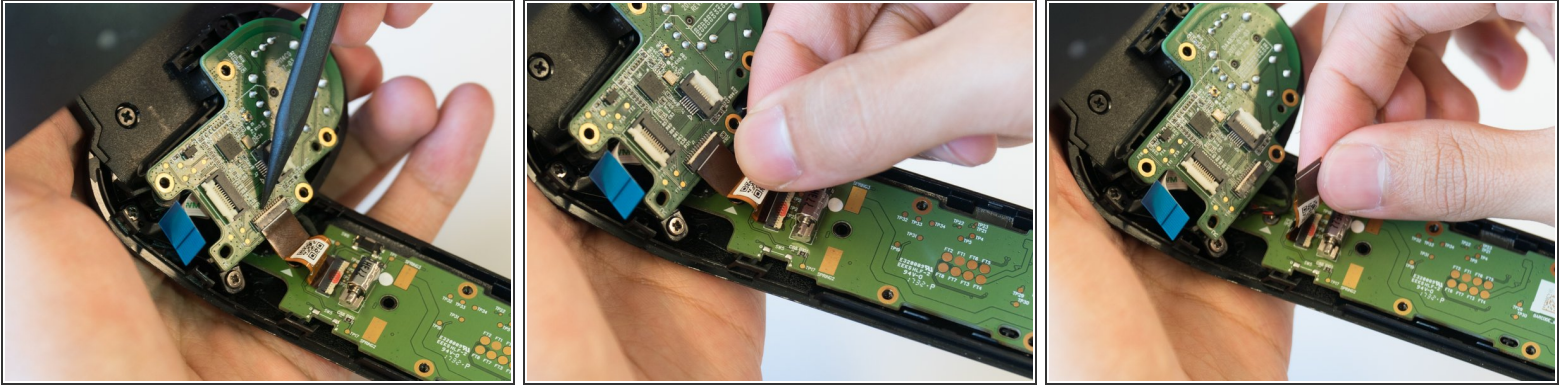
- Remove four 4mm Phillips #0 screws.

Step 9



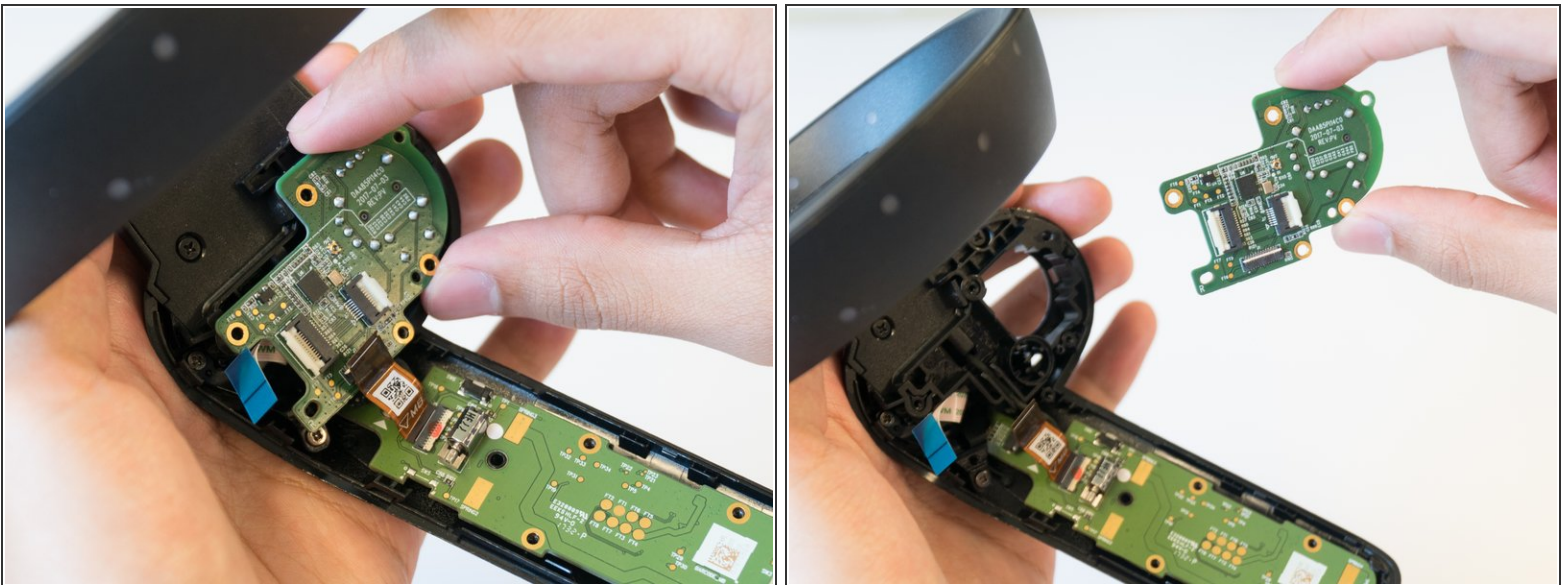
- Use the tip of the blue plastic opening tool or your fingernail to gently flip-up the white locking flap.
⚠ Make sure to only lift the flap and not the connector socket because the socket easily breaks off.
- Grab the blue cable and pull away from the socket.
- ☑ To reinstall, insert the blue cable into the connector and close the flap on the black line.

Step 10



- Use the tip of a spudger or your fingernail to gently flip-up the small white flap holding the orange ribbon cable.
⚠ Make sure to only lift the flap and not the connector socket because the socket easily breaks off.
- Grab the orange cable and pull away from the socket.
- ☑ To reinstall, insert the orange cable into the connector and close the flap on the white line.

Step 11



- Place two fingers on the perimeter of the daughterboard and lift it away from the controller.

Step 12 — Motherboard



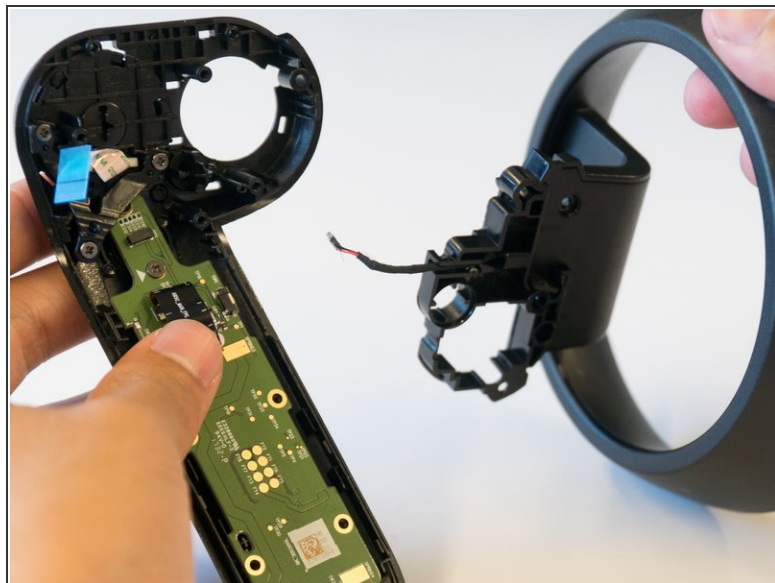
- Remove two black 6mm Phillips #0 screws.

Step 13



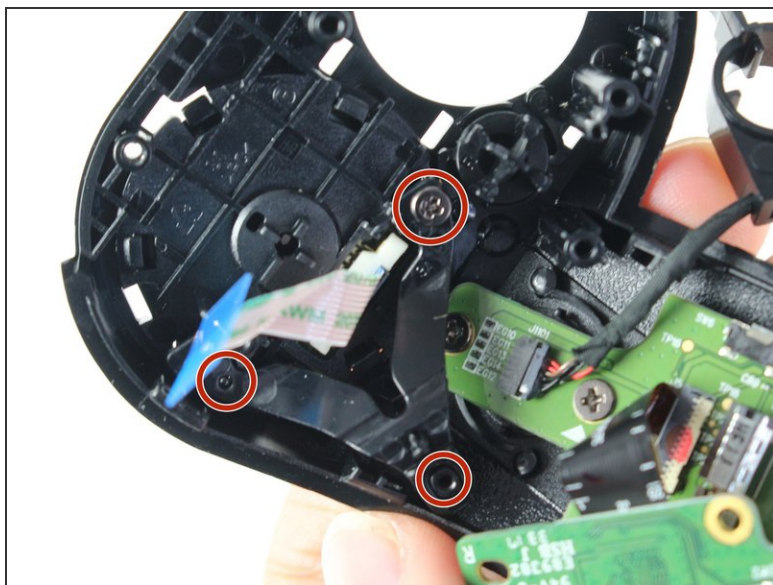
- Pinch the black ring on the top of your controller and pull toward yourself to disconnect it.
- ⓘ The ring may slightly pop as it disconnects from the controller body.

Step 14



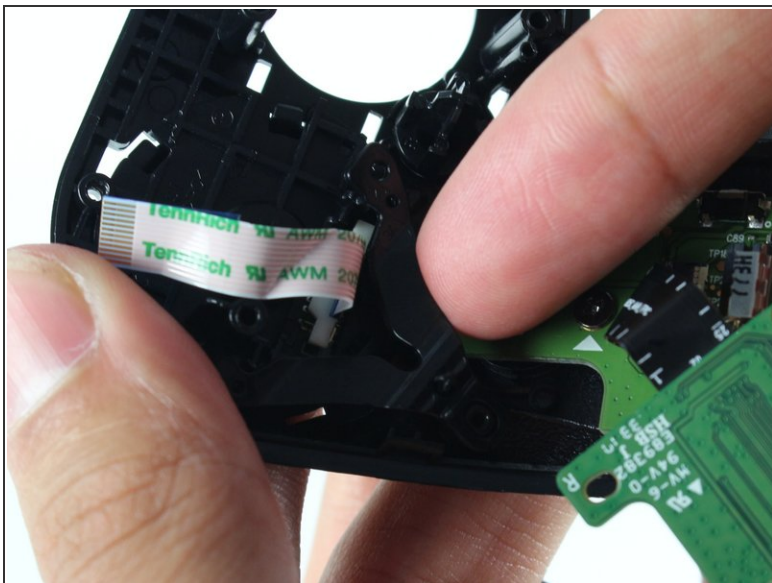
- Grab the black and red wires attached to the motherboard and wiggle the connector out of the socket.

Step 15



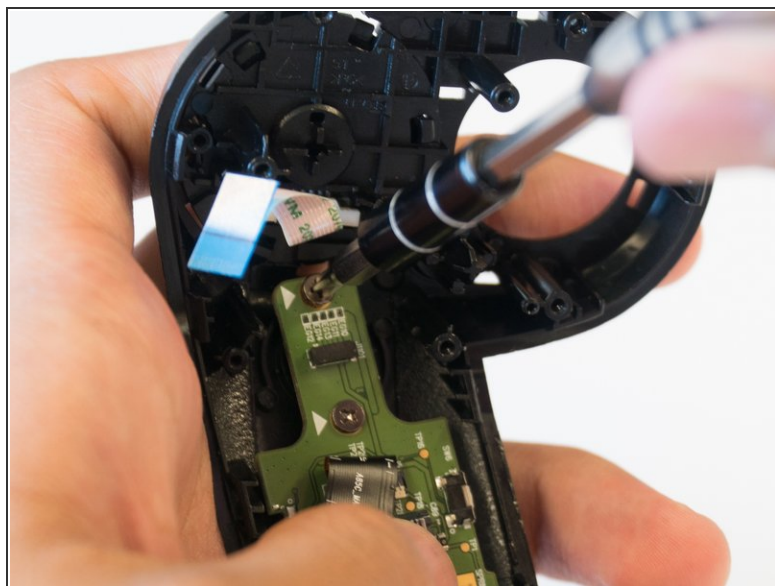
- Remove three 3mm Phillips #0 screws.

Step 16



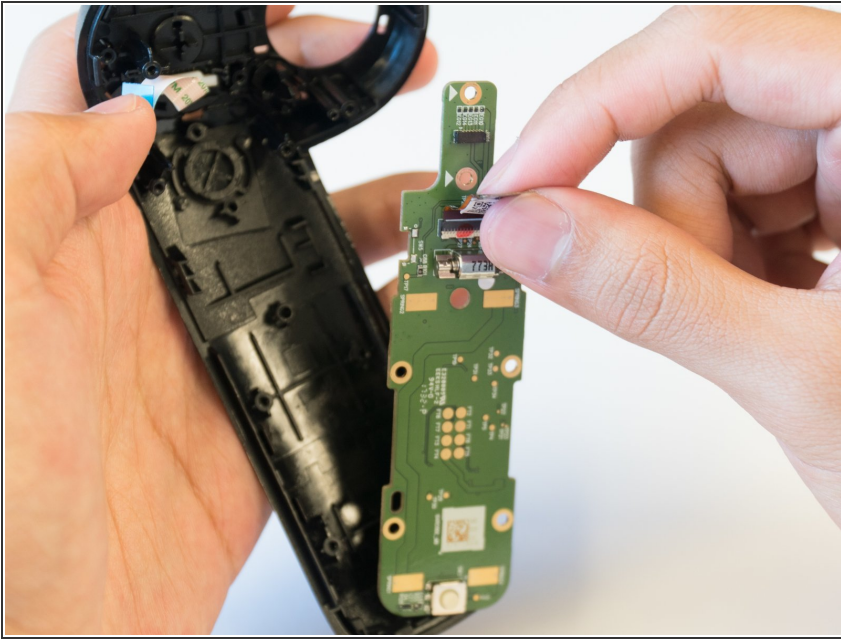
- Insert your finger underneath the black plastic "V" and scoop up to remove it.

Step 17



- Remove two 4mm Phillips #0 screws.

Step 18



- Pinch the orange ribbon cable and pull toward yourself to remove the motherboard.

To reassemble your device, follow these instructions in reverse order.