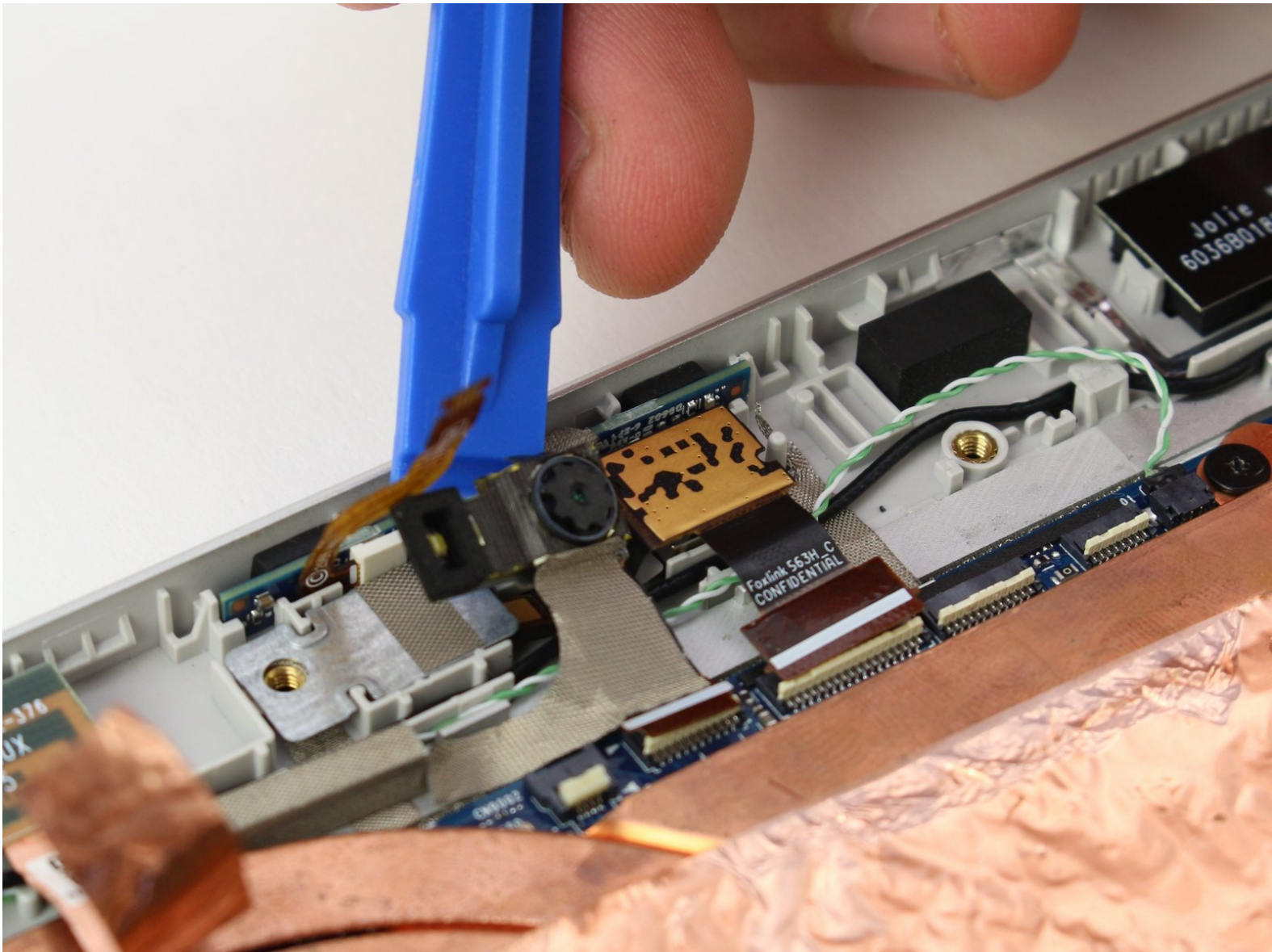




HP Elite x2 1012 G2 Front Webcam Replacement

How to replace the front-facing webcam of the HP Elite x2 1012 G2.

Written By: Noah Stapp



INTRODUCTION

The front-facing camera is an important of any modern tablet or laptop . This guide shows how to replace a broken or malfunctioning webcam on the HP Elite x2 1012 G2.



TOOLS:

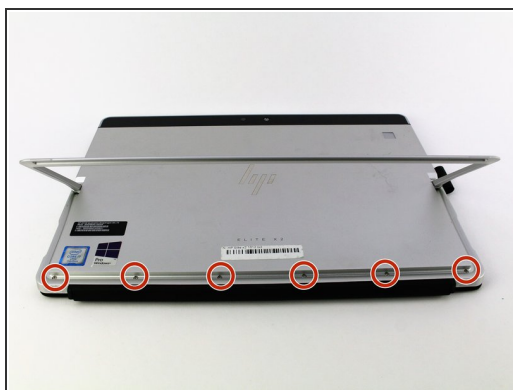
- [T5 Torx Screwdriver](#) (1)
 - [Suction Handle](#) (1)
 - [iFixit Opening Tool](#) (1)
 - [Phillips #0 Screwdriver](#) (1)
-

Step 1 — Screen



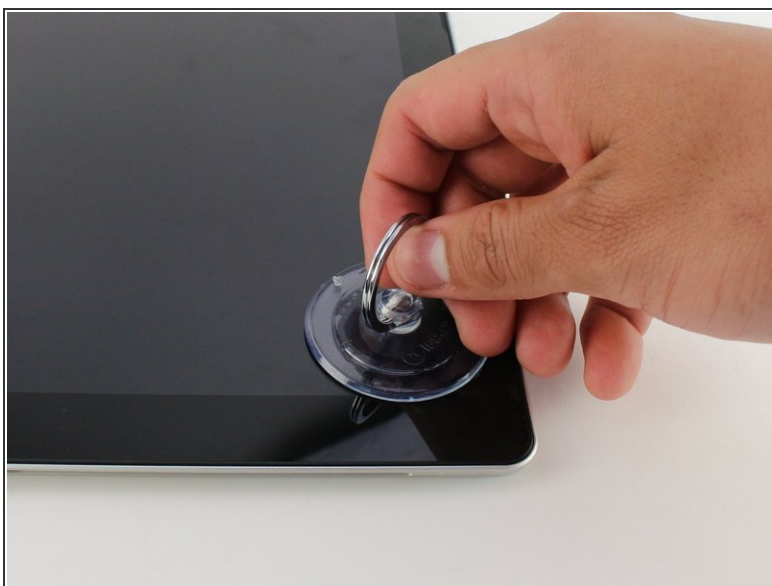
- ❗ Make sure the device is turned off before starting.
- Orient the device so the back is facing you, with the kickstand up.

Step 2



- Remove the six 3mm Torx T5 screws underneath the kickstand.

Step 3



- Turn the device over so the screen is facing you.
- Place a suction cup firmly onto a corner of the screen.
- Lift up gently until you see the screen separate from the casing.
- Repeat this process for all four corners.

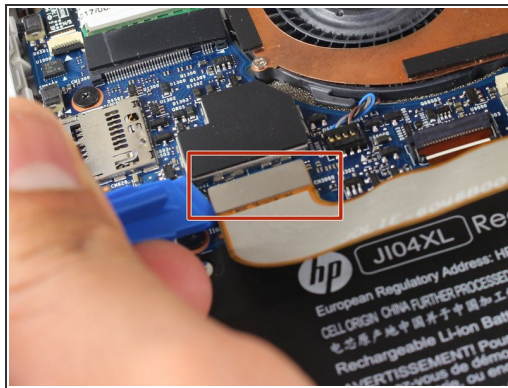
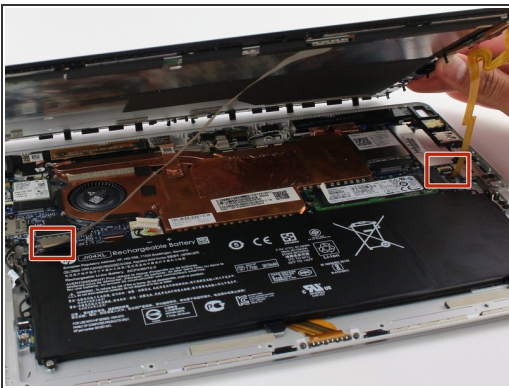
Step 4



- Lift the screen up and off of the device.

⚠ Pry each corner up first, otherwise you may damage or crack the screen.

Step 5



- Remove the two connectors on the back of the screen by lifting the connector tabs on the motherboard with a plastic opening tool and pulling gently.

Step 6



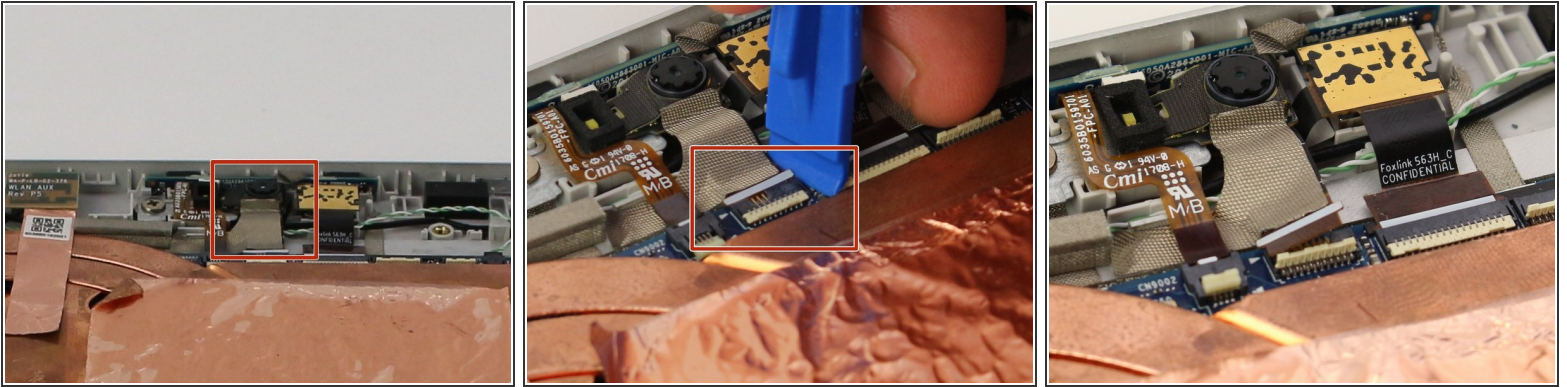
- Remove the screen by gently lifting it off of the device.

Step 7 — Front Webcam



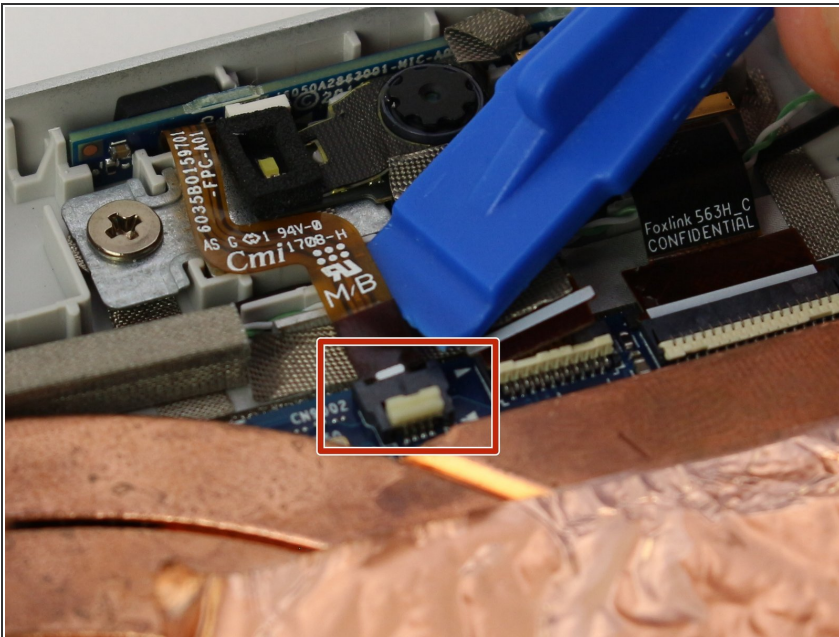
- Orient the device so that the battery is closest to you.
- ❗ The battery is the large, black rectangle at the bottom of the device.

Step 8



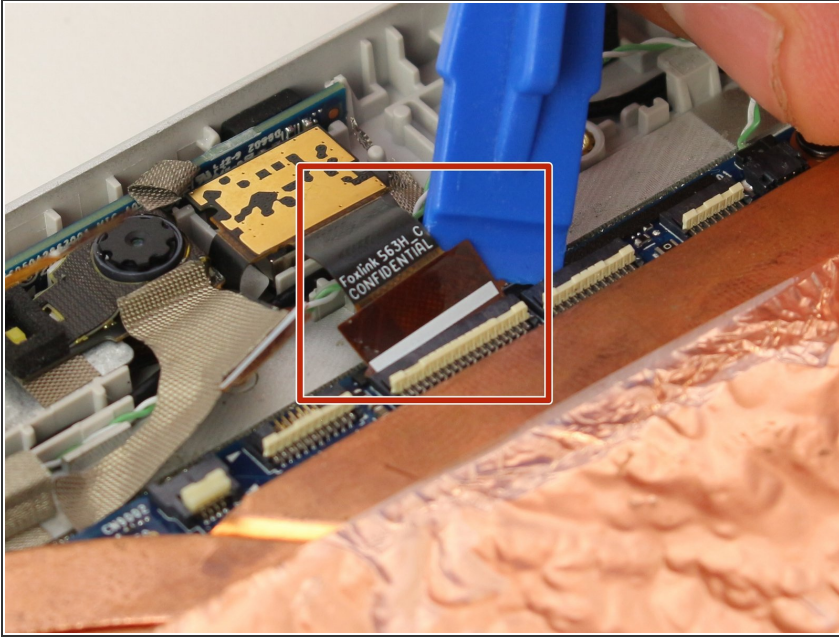
- Remove the wire connector to the front webcam using a plastic opening tool. Hook the tool underneath the connector and pull up and back.

Step 9



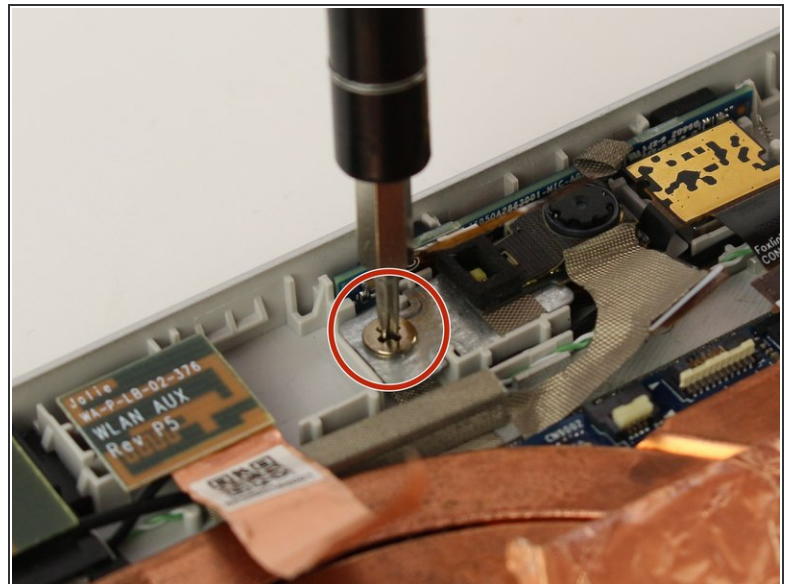
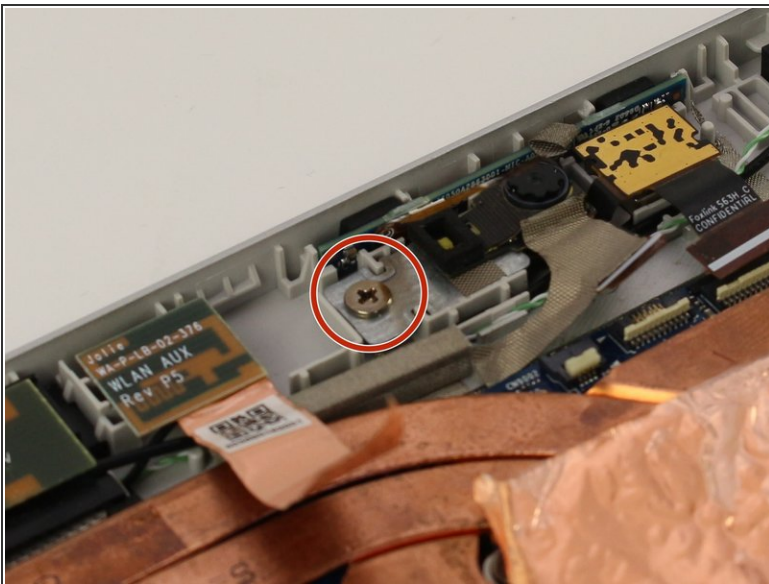
- Remove the connector immediately to the left of the front webcam's connector. Use a plastic opening tool to gently lift the connector up and out.

Step 10



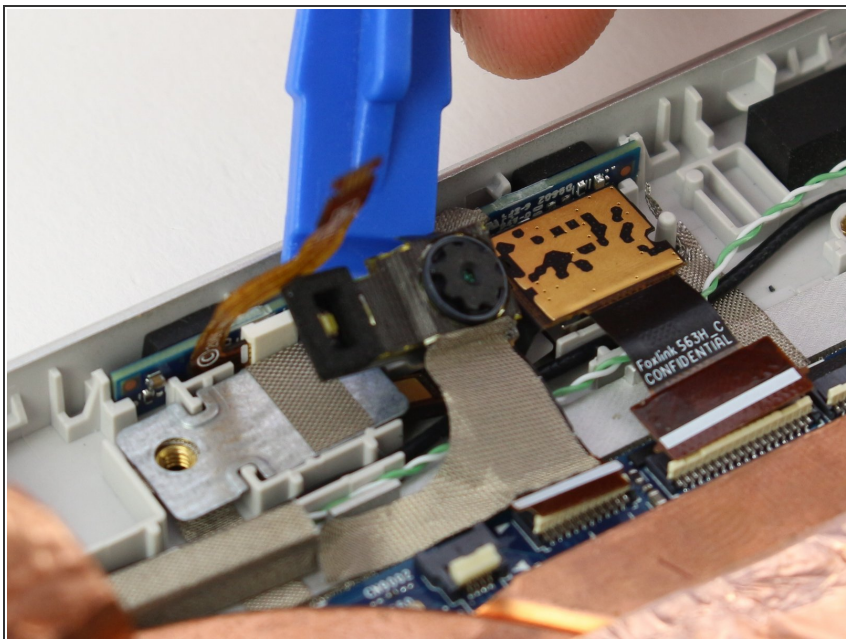
- Remove the connector immediately to the right of the front webcam's connector. Use a plastic opening tool to gently lift the connector up and out.

Step 11



- Use a Phillips screwdriver to remove the Phillips M2.0x2.0 screw to the left of the webcam. Turn the screwdriver counterclockwise to remove the screw.

Step 12



- Remove the webcam using a plastic opening tool to lift it up and off.

To reassemble your device, follow these instructions in reverse order.