



ZTE Blade Spark Rear-Facing Camera

Follow this guide to disassemble the ZTE Blade...

Written By: Hung Vu



INTRODUCTION

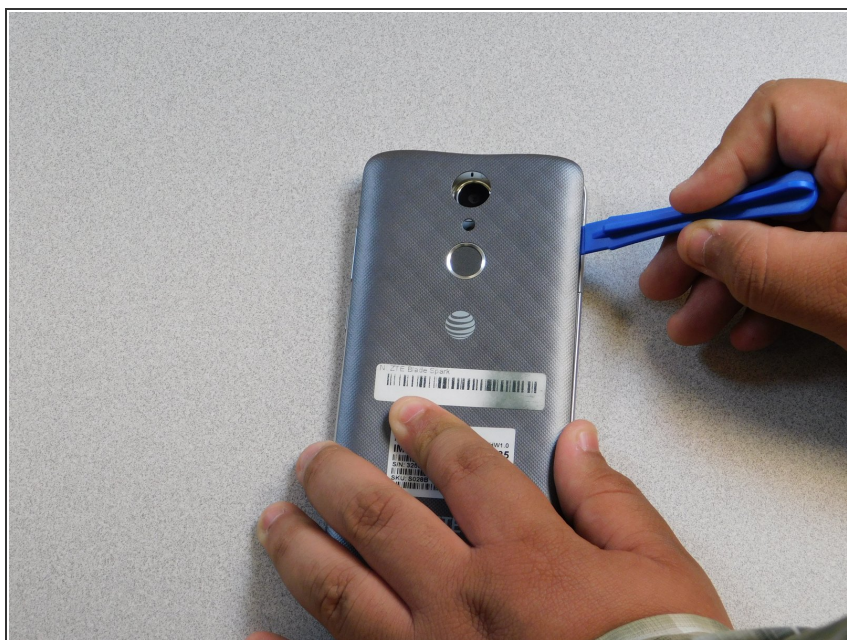
Follow this guide to disassemble the ZTE Blade Spark device and replace the rear-facing camera.

Step 1 — ZTE Blade Spark Rear-Facing Camera



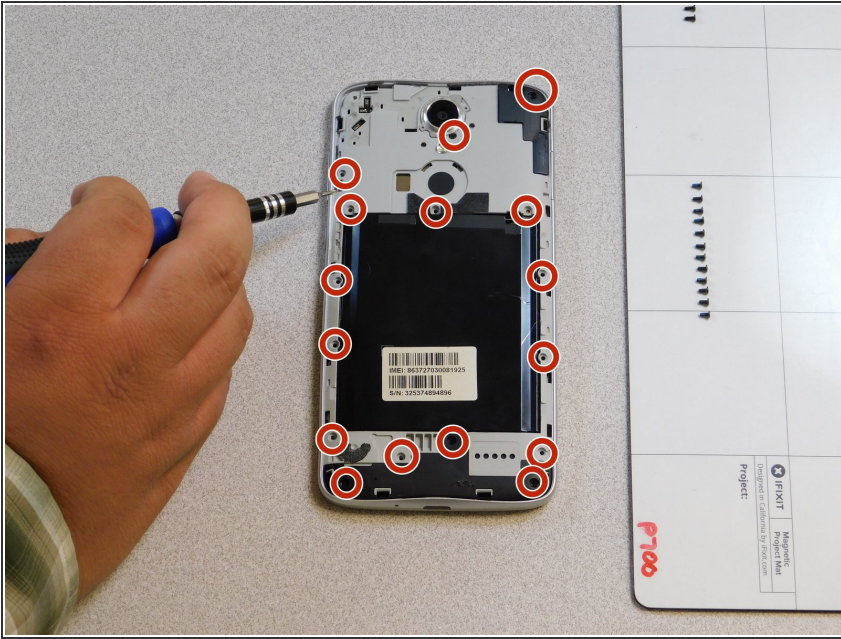
- First, apply heat evenly on the back cover using a heat sack to soften the adhesive.

Step 2



- Now, carefully remove the back cover.

Step 3



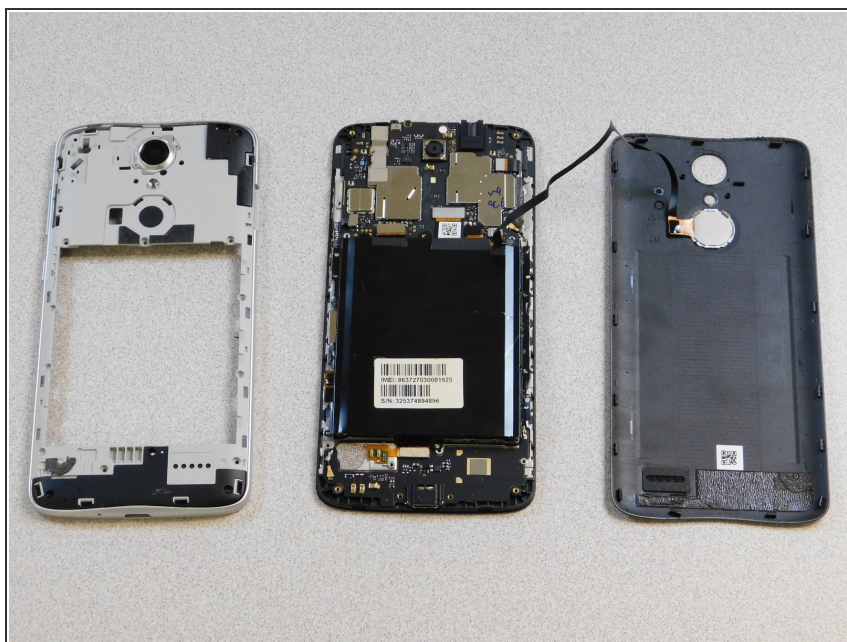
- Once opened, Locate and remove all exposed screws using a Phillips-Head screwdriver and set them aside.

Step 4



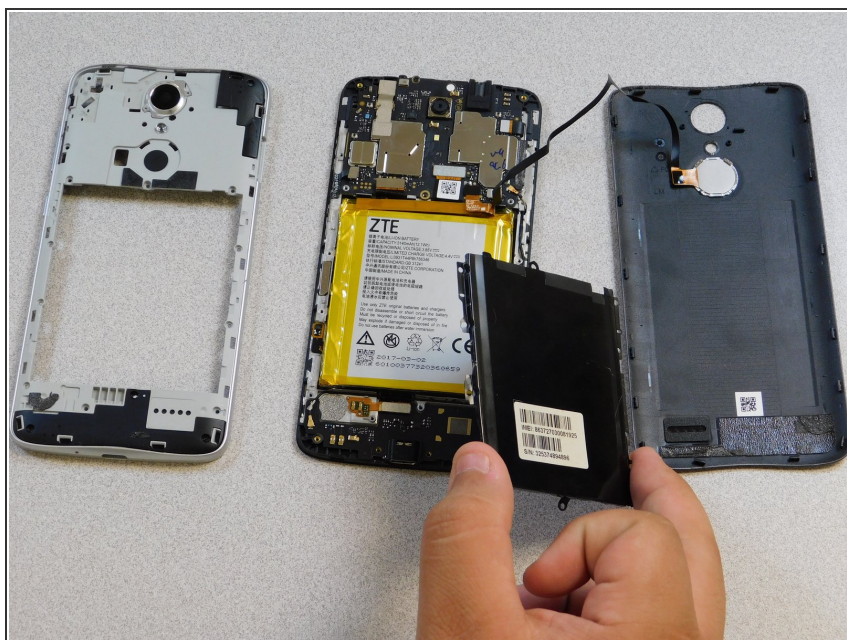
- To remove the inner white panel/cover, use a plastic opening tool to loosen from each side.

Step 5



- After removing the white plastic panel, you should see a black metal battery cover.
- To remove the metal battery cover, remove the screws from the panel using a Phillips screwdriver if you have not yet done so.

Step 6



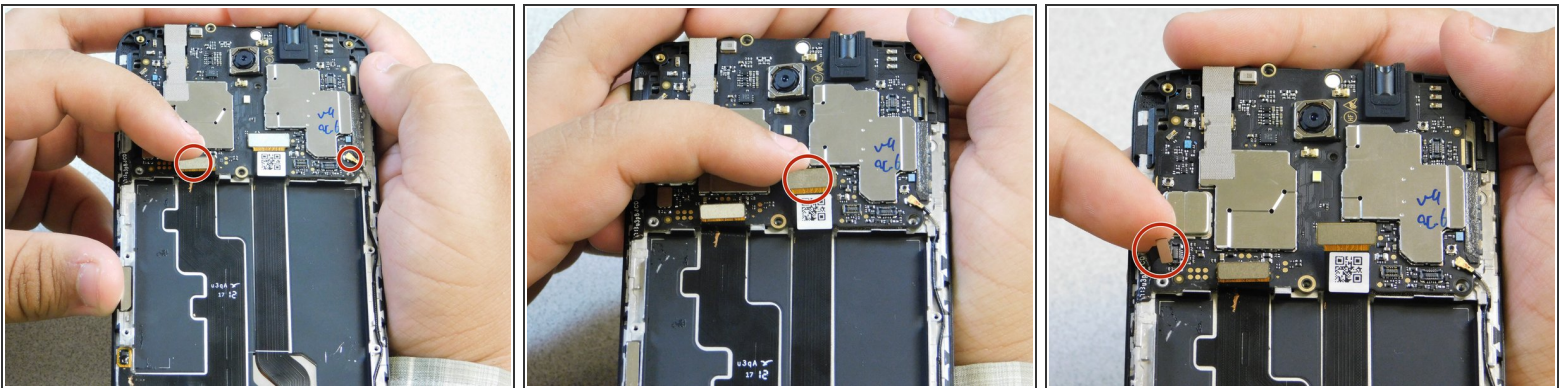
- Then, simple lift to remove the metal battery cover.

Step 7



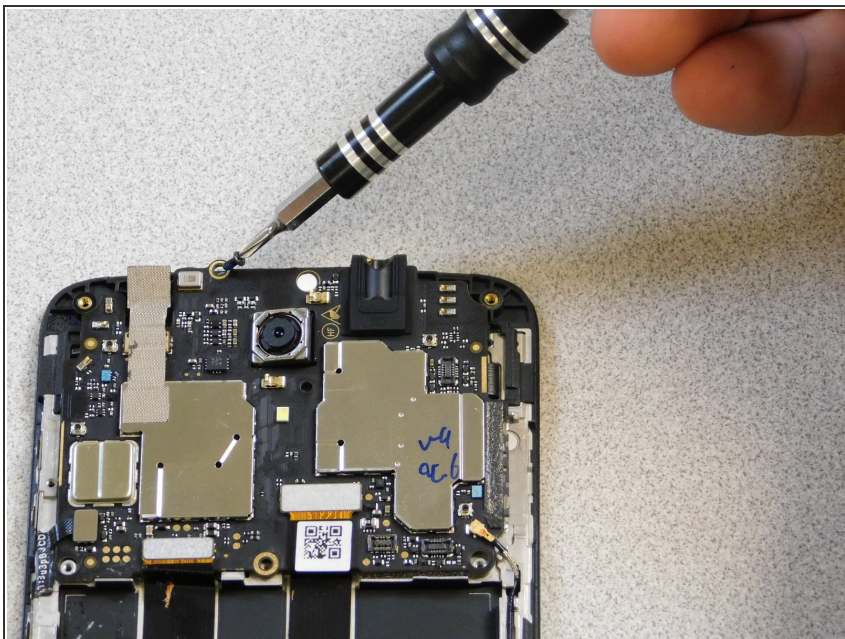
- You have reached the Fingerprint Scanner, the device Battery, and Front Facing Camera.

Step 8



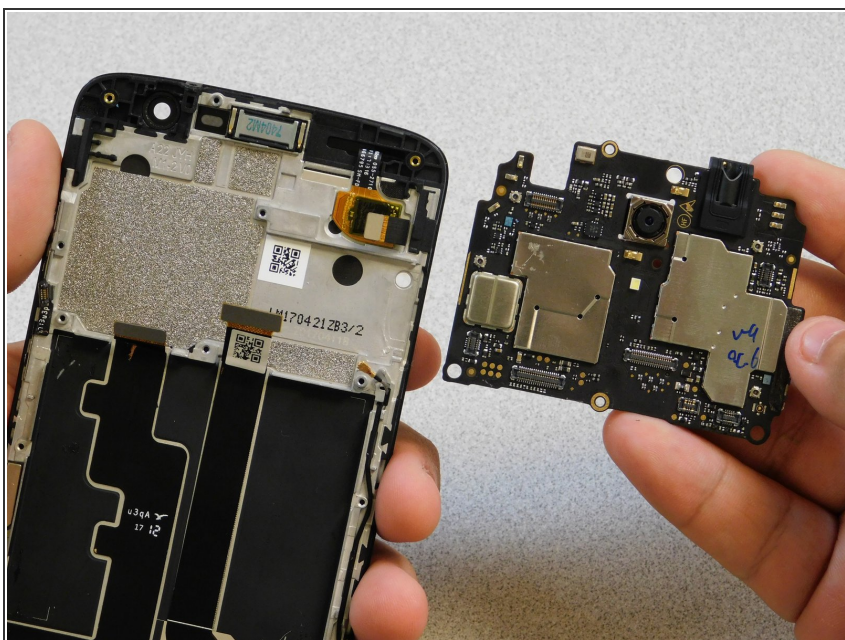
- Proceeding with disassembly, next up is the top chipset which the Rear Facing Camera is attached to.
- To detach the chipset and reach the Rear Camera, locate and disconnect five power connectors surrounding the top chipset (as shown in images).

Step 9



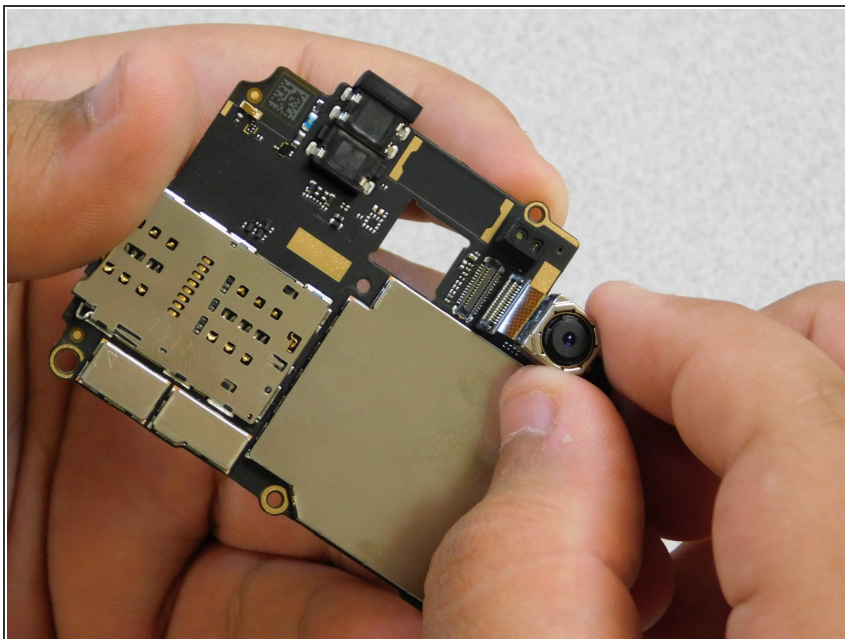
- Once you have the power connectors disconnected from the top chipset, use a Phillips screwdriver to remove the final screw located at the very top of the chipset (as shown in image).

Step 10



- Then, simply lift chipset from top and detach from the device frame.

Step 11



- You have now reached the final replacement component of the device, the Rear Facing Camera!
- For step-by-step instructions on replacing any of the device components covered throughout the disassembly process, check out our ZTE Blade Spark Replacement guides.

To reassemble your device, follow these instructions in reverse order.