



Lenovo ThinkPad Edge E520 Keyboard Replacement

This guide will assist you in replacement of...

Written By: Holly Dunham



INTRODUCTION

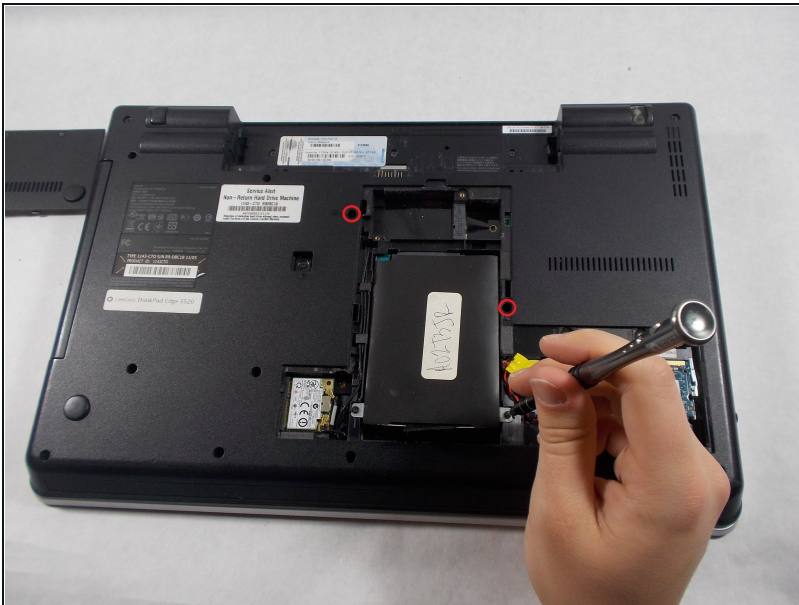
This guide will assist you in replacement of the Lenovo Thinkpad Edge E520 keyboard. You will require a Phillips head screwdriver for this replacement.


TOOLS:

Phillips #0 Screwdriver (1)

Spudger (1)

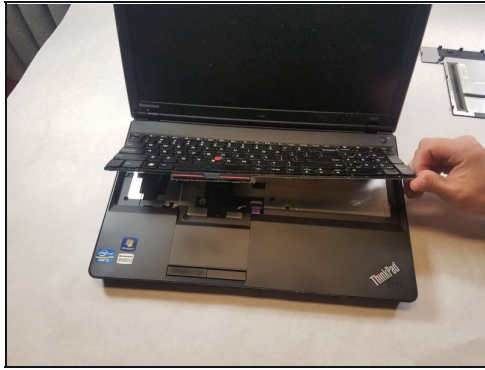
Step 1 — Keyboard



 Remove the battery from the back of the device

- Unscrew the two 3.175 mm diameter and 6.35 mm length screws with keyboard symbols pointing at them using a Phillips head screwdriver.

Step 2



- Turn the laptop back over so that the keyboard is facing you.
 - Use your hands to separate the keyboard from the laptop
-

To reassemble your device, follow these instructions in reverse order.