



Dell Inspiron 1210 Hard Drive Replacement

Written By: Terrence15



INTRODUCTION

In this guide, we will show you how to remove and replace the Hard Drive.



TOOLS:

- [Phillips #0 Screwdriver](#) (1)
-

Step 1 — Removing the Hard Drive Cable



⚠ CAUTION: Before working inside your computer, read the safety information that shipped with your computer. Follow the procedures in [Before You Begin](#).

ⓘ NOTICE: When the hard drive is not in the computer, store it in protective anti-static packaging (see "Protecting Against Electrostatic Discharge" in the safety instructions that shipped with your computer).

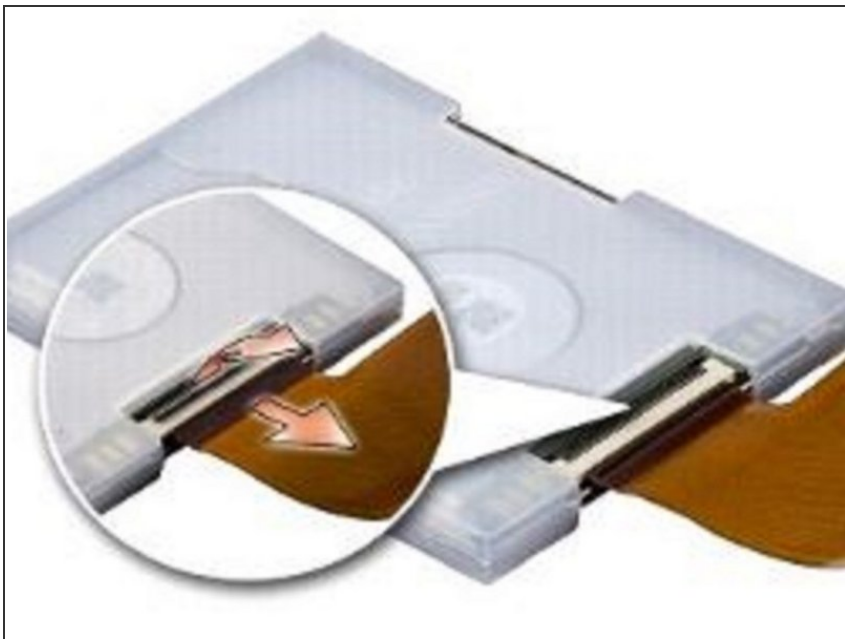
- Remove the hard drive cable from the hard-drive system board connector.

Step 2 — Lifting the Hard Drive



- Lift the hard drive out of the hard drive compartment.

Step 3 — Detach the Cable



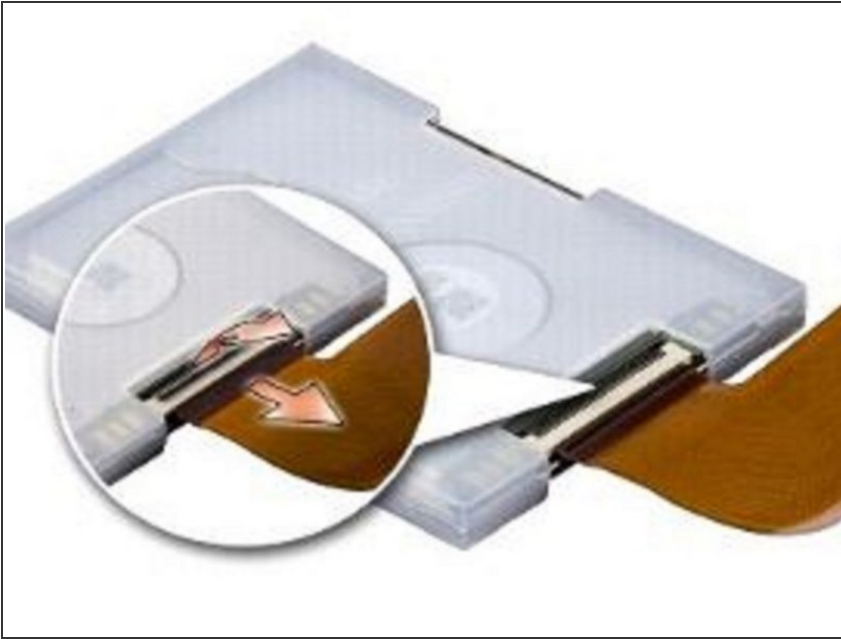
- Detach the hard drive cable from the hard drive cable connector.

Step 4 — Remove the Hard Drive



- Remove the hard drive from the rubber case.

Step 5 — Attaching the Hard Drive Cable



- To replace the hard drive, replace the rubber case onto the hard drive.
- Attach the hard drive cable to the hard drive cable connector.

Step 6 — Placing the Hard Drive



- Place the **NEW** hard drive in the hard drive compartment.

Step 7 — Attaching the Hard Drive Cable



- Attach the hard drive cable to the hard-drive system board connector.