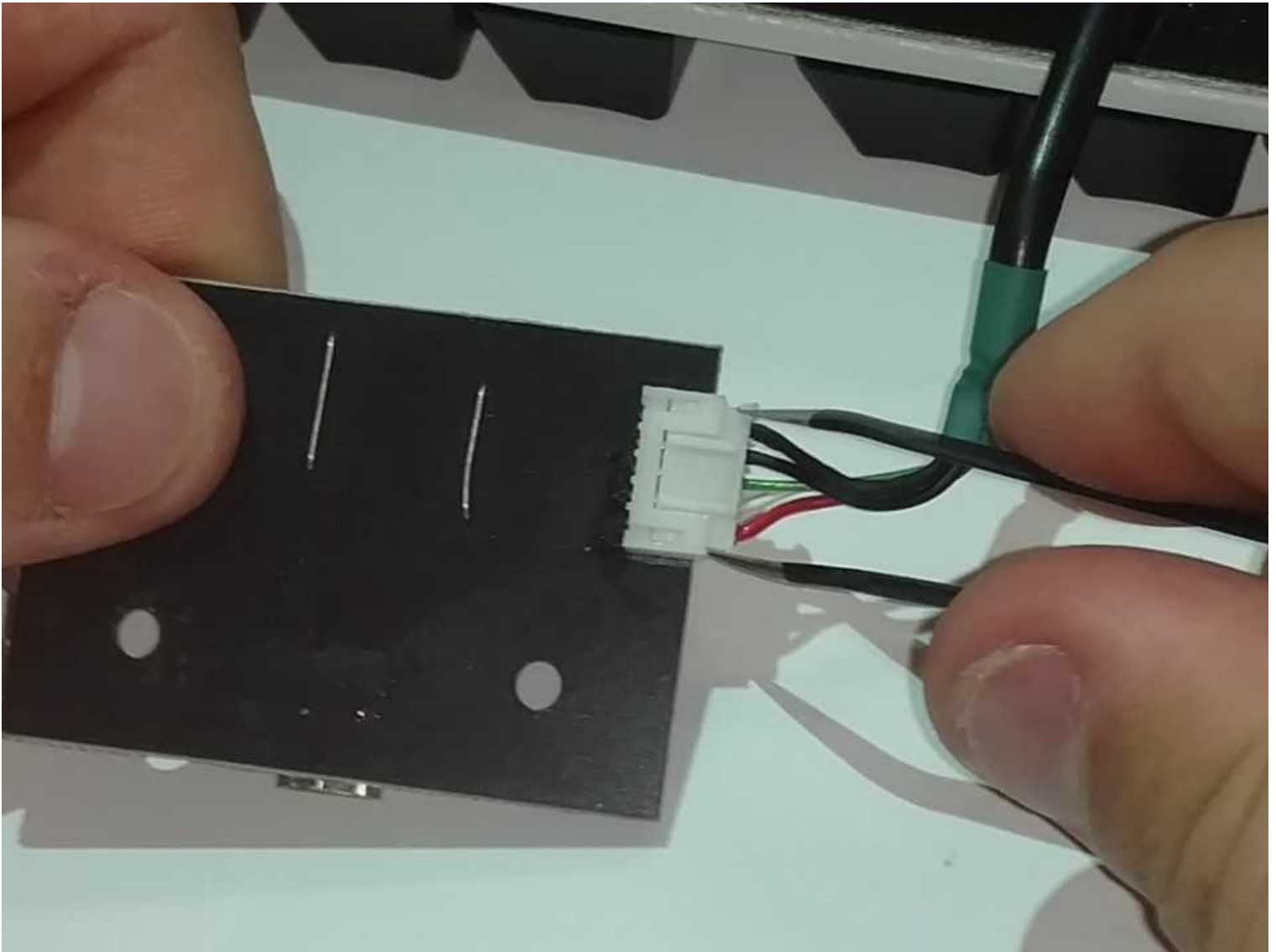




Razer Blackwidow Tournament Edition Chroma USB Port Board Replacement

The following guide will demonstrate how to...

Written By: Jonathan Stewart



INTRODUCTION

The following guide will demonstrate how to open your Razer Blackwidow Tournament Edition Chroma. You will also learn how to remove and replace the USB port board.

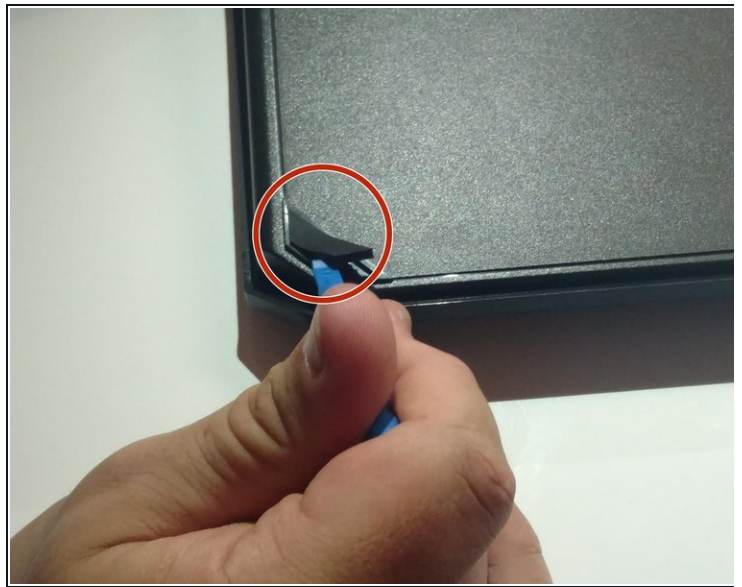
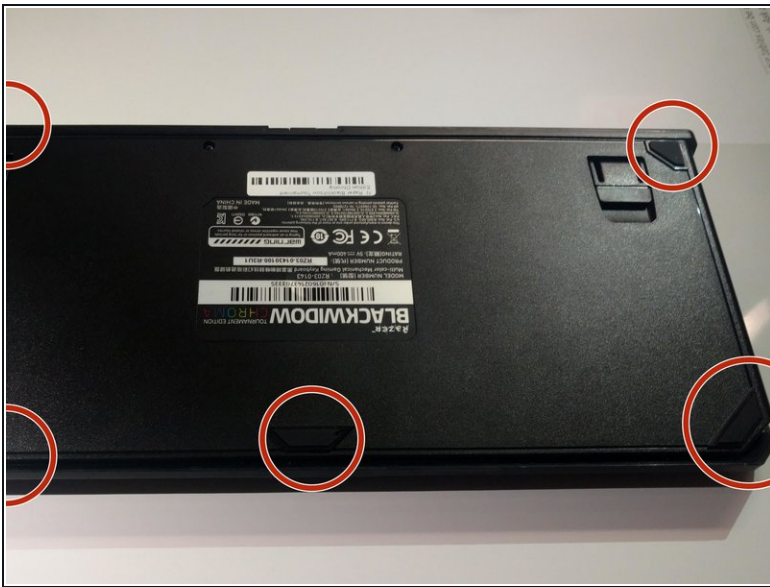
TOOLS:

Phillips #1 Screwdriver (1)

iFixit Opening Tool (1)

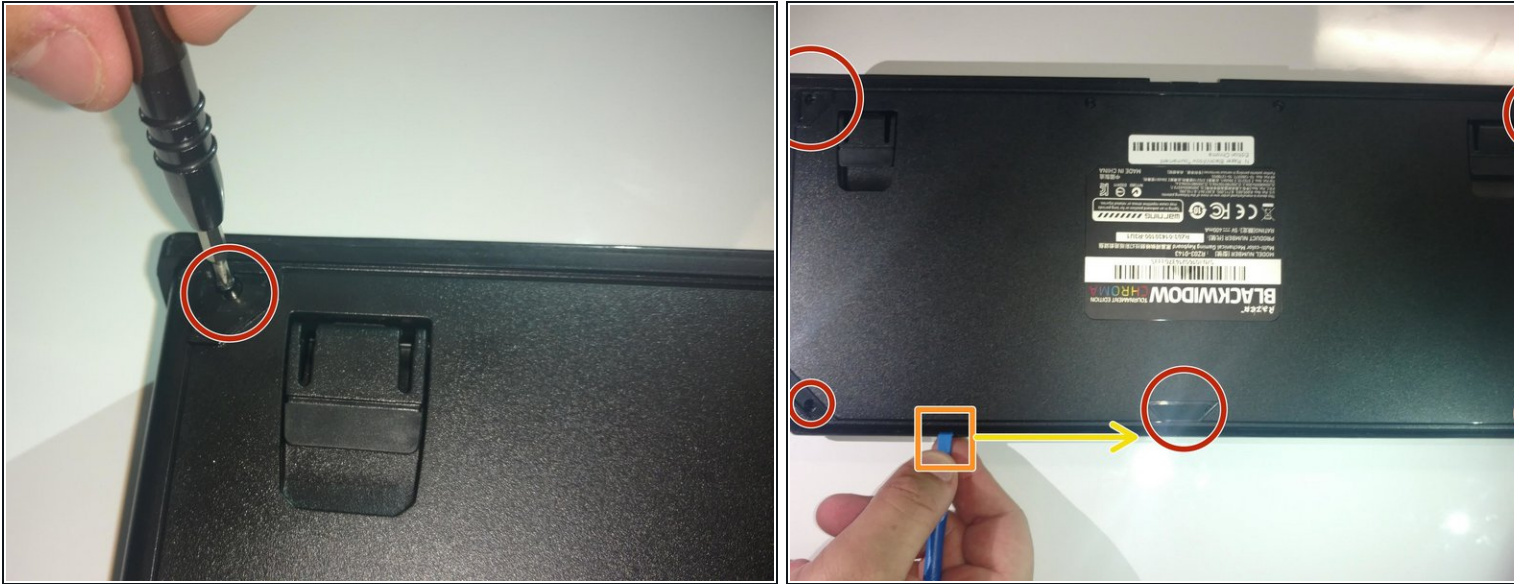
Tweezers (1)

Step 1 — Rubber Feet



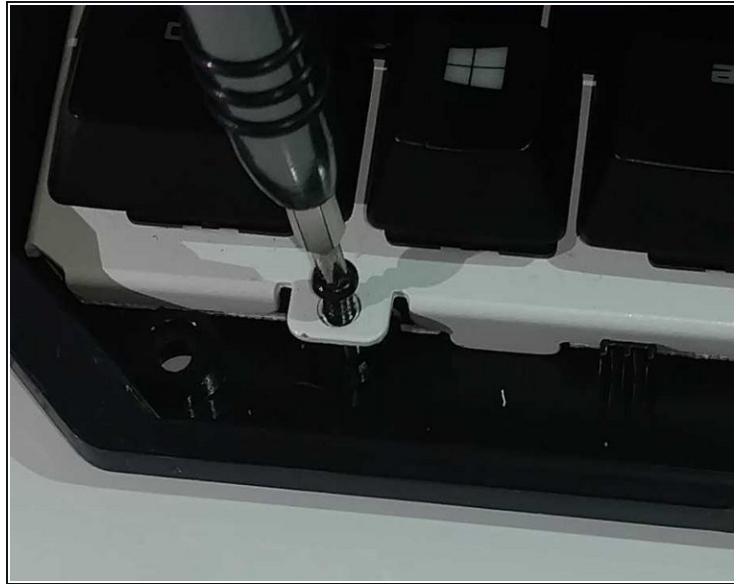
- Turn the keyboard over so that it is lying flat on its face.
- Use the iFixit opening tool to pry the rubber feet off the keyboard.

Step 2 — Front Panel



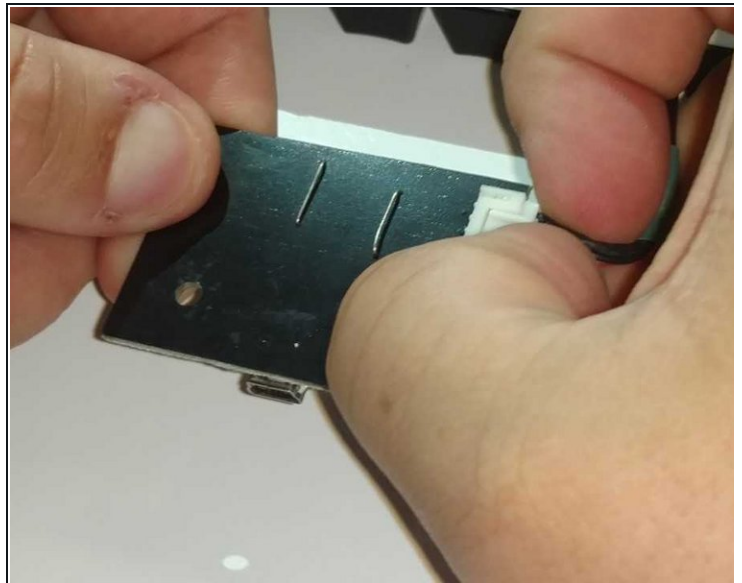
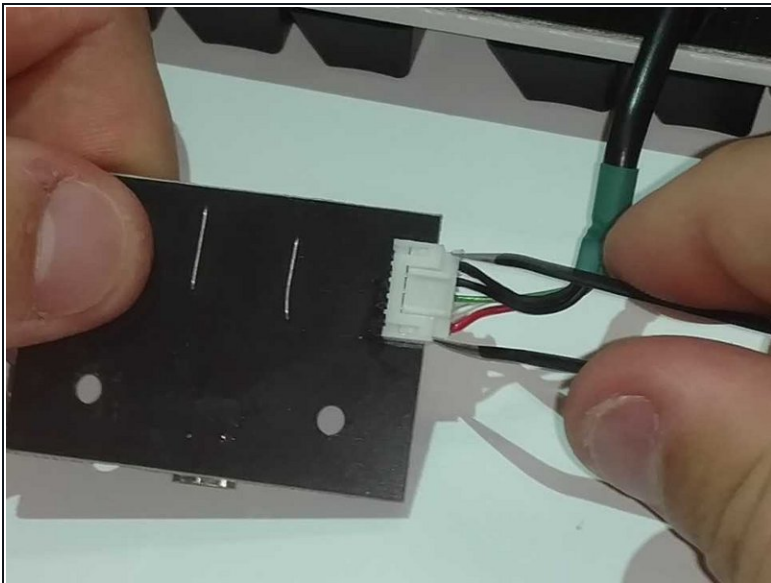
- Use a Phillips #1 screwdriver to remove the six screws on the back of the keyboard.
- Use an opening tool as a wedge between the front and back panel to pry open the front panel.
 - ⚠ If the front and back panel won't separate, **DO NOT** use excessive force. This may result in damaging the keyboard.
 - Instead, slide the opening tool across the keyboard in between the front and back panel. Go around the edges of the keyboard until the panels disconnect.
- Flip the keyboard over so the keys are facing up.
- Grabbing the left and right lips of the front panel, lift both ends up, removing the front panel.

Step 3 — Back Panel



- Use a Philips #1 Screwdriver to remove the four screws located below the keys.
- Lift the main circuit board and flip it over, placing it on its top.
- ⚠ Be cautious of the wire connected to the USB Port Board.

Step 4 — USB Port



- Pull on the wire connector until it disconnects from the USB port board.
- ⓘ You may use either your hands or a pair of tweezers to separate the white connection clip.

To reassemble your device, follow these instructions in reverse order.