



CyberPowerPC Fangbook MS-1763 Hard Drive Replacement

This guide will teach you how to remove & replace a hard drive on this device.

Written By: Brian Chaffin

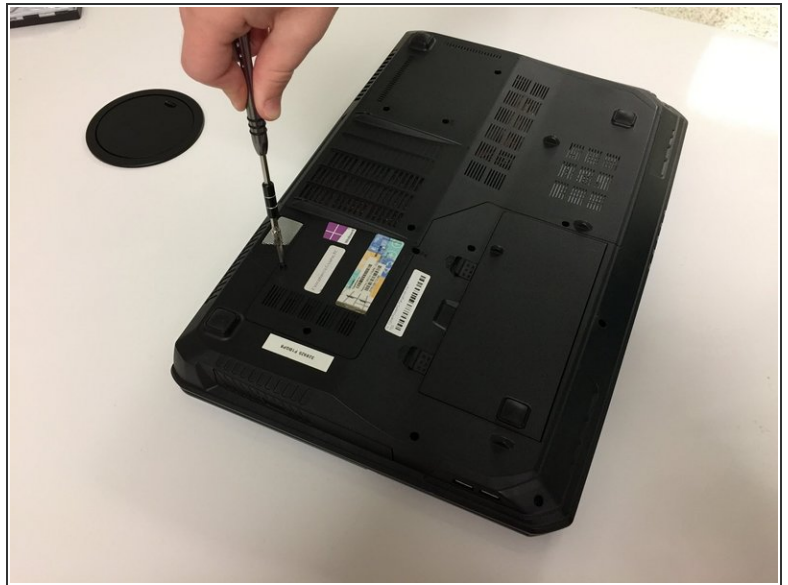




TOOLS:

- [Phillips #0 Screwdriver](#) (1)
-

Step 1 — Back Cover



- Turn the laptop so the back is facing up.
- Use a Phillips #00 screwdriver to remove the seven screws from the bottom cover. These will require a counter-clockwise rotation to remove. A magnet may be helpful to remove screws if they get stuck at the bottom of their inserts.
- ⓘ Find a place to safely keep loose screws. There are seven in total, all the same length - black in color.

Step 2



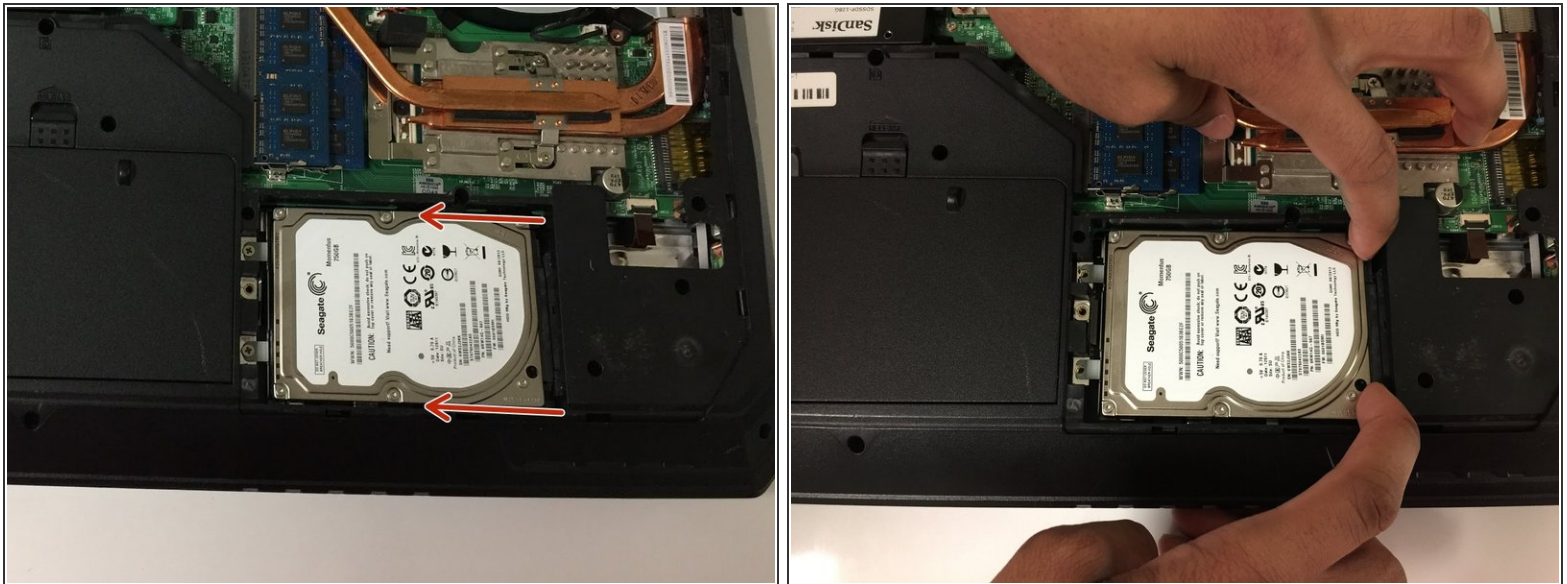
- i** With all screws removed (and safely put aside), you may begin removing the cover. A plastic flat object can help doing this. Note that more force will be required than you might expect
- Start by pulling up on the lip, highlighted in Red. This will be at the back of the computer.
 - Once the back has been lifted up, begin lifting up at the orange side on the left. This will be right next to the back we just pulled up. The right side should come loose at this time; pull up on it as well
 - Lift and pull on the yellow edge, on the opposite side of the first part we pulled up on. Once this is removed, lift the panel off the computer.
- i** In the steps, the colors mentioned to pull on align with the colors shown on the image. "Pull on the yellow edge" means to pull on the edge marked in yellow on the image

Step 3 — Hard Drive



- Locate the hard drive on the inside of the computer. First Image shows it outlined in red.
- Remove the two screws holding the hard drive in place. Keep these on the side.
- ⓘ Screws are silver in color, both same length.

Step 4



- Before we can remove the hard drive, we must first disconnect it from it's connectors. These are on the opposite side of the screws.
- To disconnect them, we push the hard drive out of the slots. Grip the sides, and push (or pull) towards the screws. The hard drive should move slightly.

Step 5



- With the hard drive screws removed, and disconnected from the computer - we can remove it.
- Lift up on the small tag in between the mounts we removed the screws from. You might have to move the hard drive slightly to keep the screw mounts from getting stuck. This is normal.
- ⓘ Note the orientation of the hard drive. You'll need to insert the new one in the same exact position, to line up the connectors.

To install the new hard drive, follow the steps in reverse. Ensure the new hard drive is oriented the same as the old one. Only difference is to push the hard drive into the connectors.