



# Back Cover Removal

Remove the back plate, battery, and cover from the Toshiba Satellite L855-S5119.

Written By: Monte Roden



---

## INTRODUCTION

To gain access to many of the device components removal of the back cover is required.

---



### TOOLS:

- [Phillips #1 Screwdriver](#) (1)
  - [Phillips #0 Screwdriver](#) (1)
-

## Step 1 — Battery



- Turn the laptop face down to expose the back.
- Locate the battery.

## Step 2



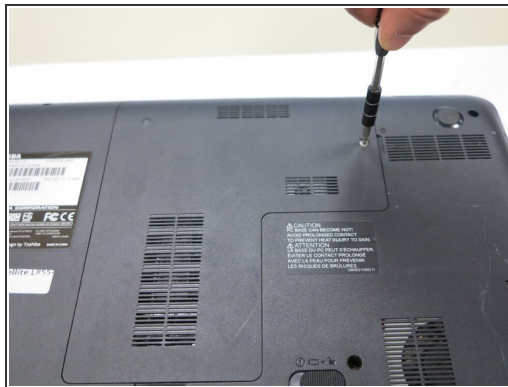
- i** Locate the battery latches. The battery latch mechanism can be compared to a door -- The right latch, when pushed right, unlocks the battery, while the left latch, when pushed left, releases the battery, pushing it out from its container.
- Push the latch on the right to the right to unlock the battery latch locking mechanism.
  - Push the battery latch on the left to the left to unlock the battery.

### Step 3



- With the left battery latch pushed left, remove the battery from its port by lifting the battery from the middle of the battery.
- The battery will come free.

### Step 4 — Back Plate Removal



- Turn the laptop over to place it top down.
- Use a Phillips #1 screwdriver to remove the screw holding in the back plate. This screw does not come out of the plate.
- Lift the back plate off the laptop, exposing the RAM and Hard Disk.

## Step 5 — Optical Drive



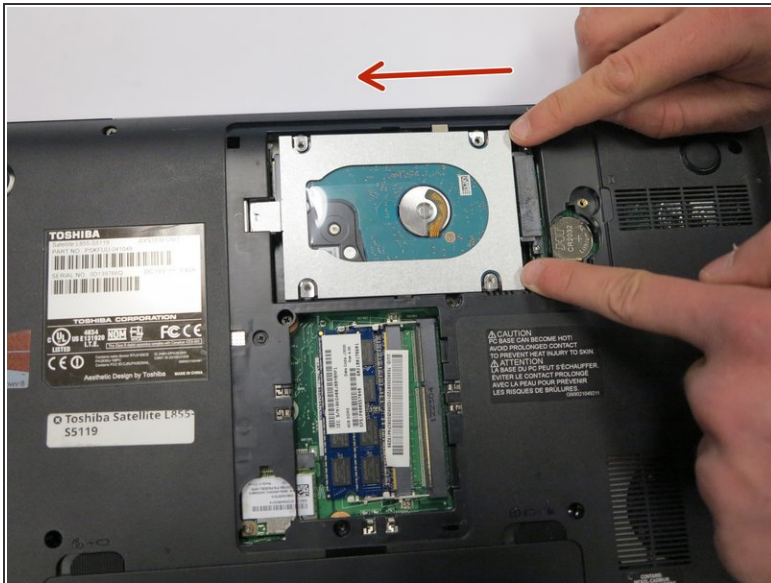
- Using a Phillips #0 screwdriver, remove the single 3mm screw.

## Step 6



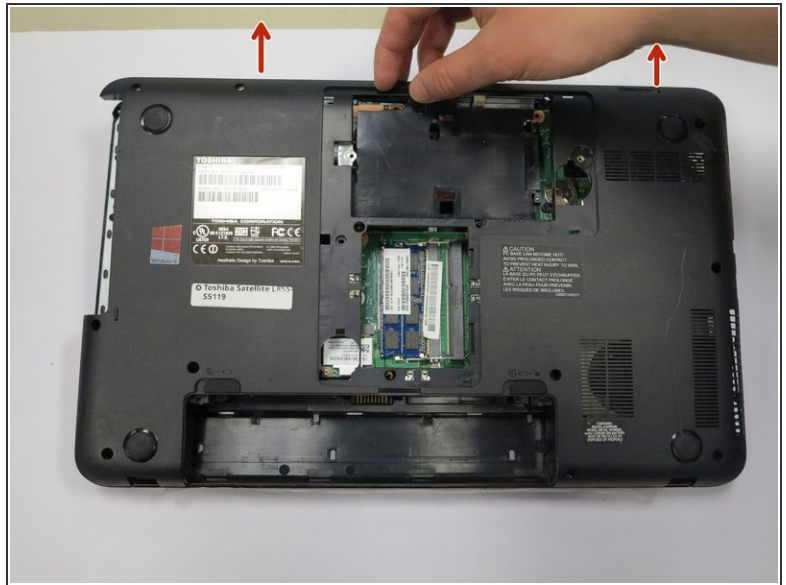
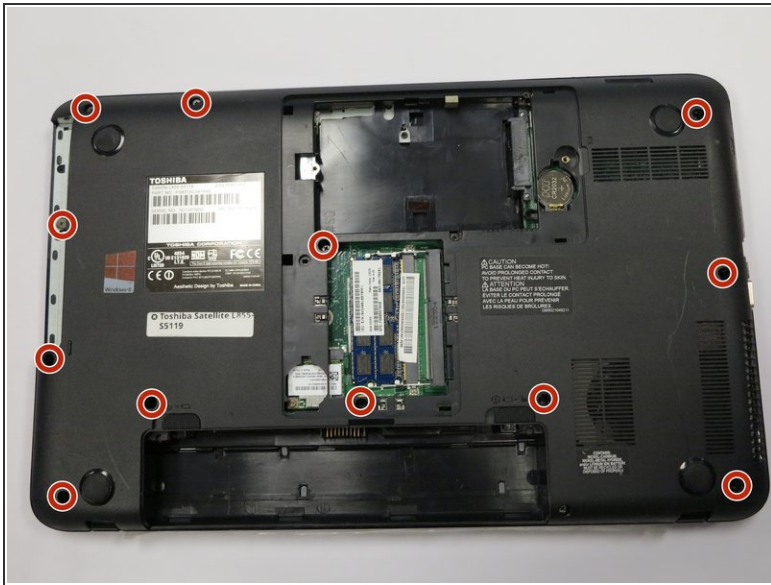
- Rotate the laptop so that you have access to the optical drive.
- ⓘ The optical drive is now only attached by a port in the drive's back. The optical drive can be pulled straight out of its housing.
- Remove the drive.

## Step 7 — Hard Drive



- Unscrew the hard drive.
  - ⓘ There could be up to five 3mm screws - One on each corner of the hard drive, and one at one end of the hard drive, attaching the drive to the laptop's frame.
- Carefully push the hard drive away from its port. This should not require substantial force.
- Lift the hard drive out.
  - ⓘ Some hard drives have a plastic tab, which can be lifted from to remove the hard drive.
  - ⓘ Otherwise, take hold of opposite sides of the hard drive and lift the drive straight up.

## Step 8 — Back Cover Removal



- Unscrew the screws circled in red. This includes eleven 6mm screws, and one 5mm screw underneath where the optical drive was housed. All screws can be removed with a Phillips #0 screwdriver.
- Carefully remove the back cover. The battery holder contains notches that help hold the case in place, so take care not to break those.

To reassemble your device, follow these instructions in reverse order.