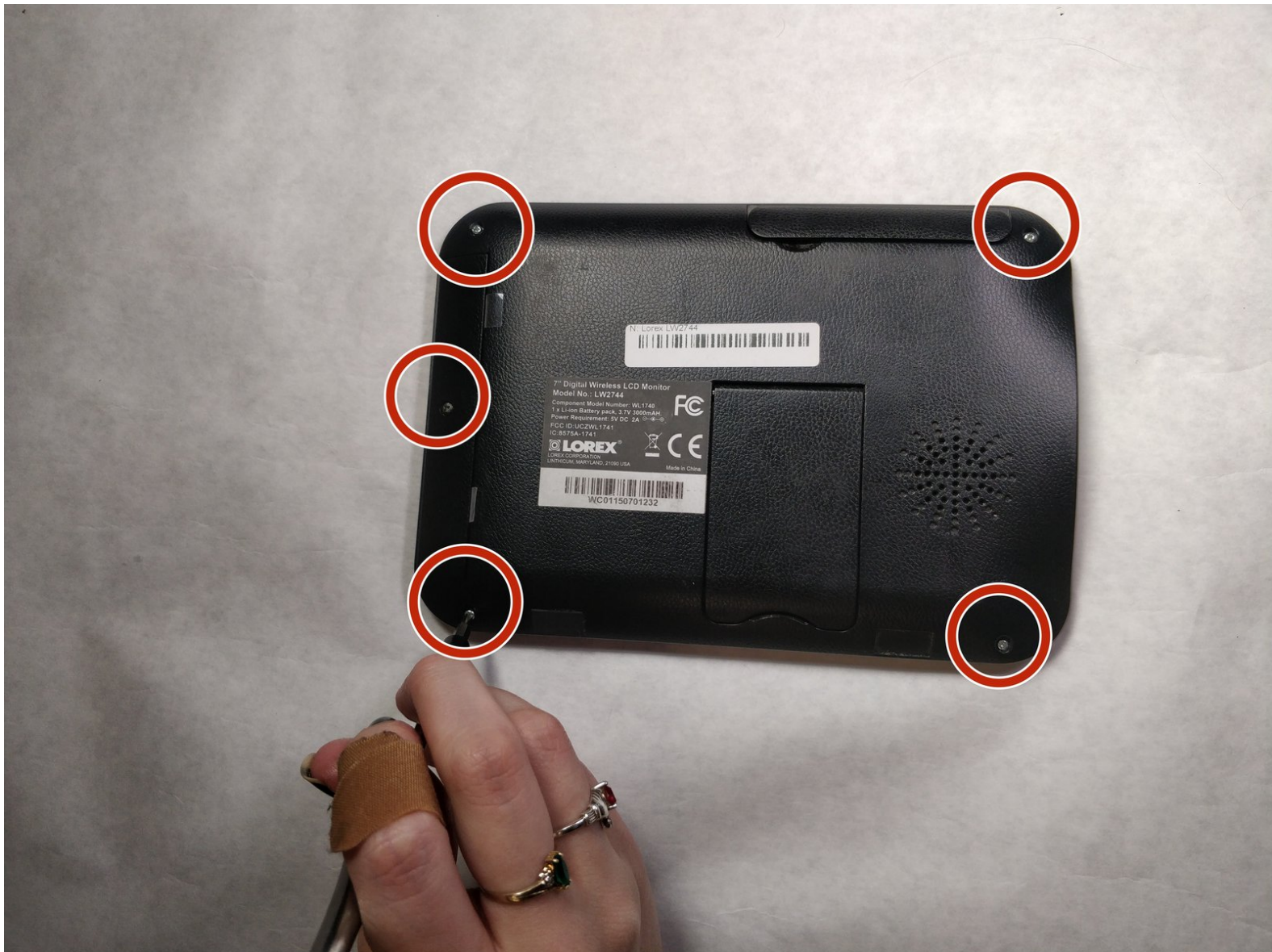




Lorex LW2744 Wi-Fi Antenna Replacement

How to replace the Wi-Fi antenna in a Lorex LW2744.

Written By: Yancey Crase



INTRODUCTION

This guide explains how to re-attach the WiFi antenna.



TOOLS:

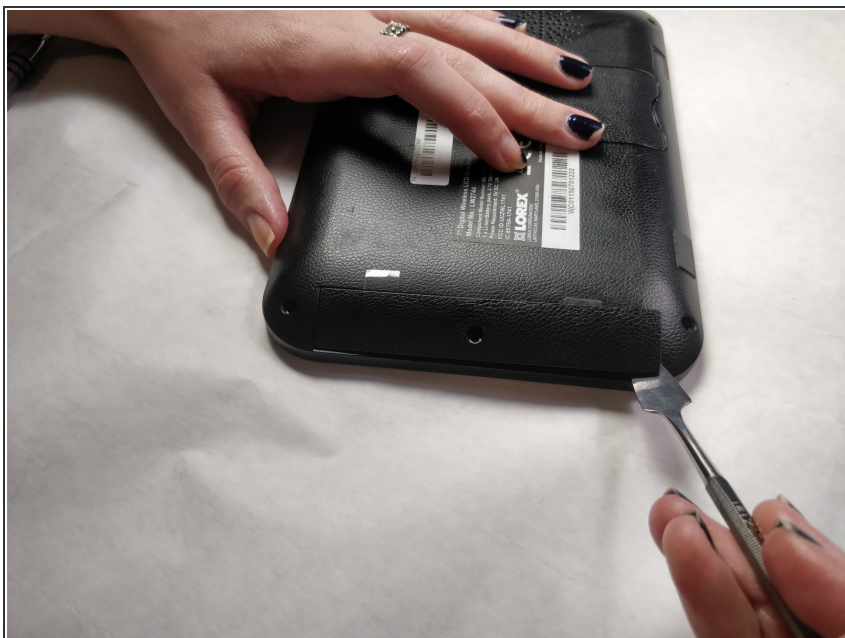
- [Metal Spudger](#) (1)
 - [Soldering Iron](#) (1)
 - [Tweezers](#) (1)
 - [Phillips #0 Screwdriver](#) (1)
-

Step 1 — Battery



- Remove the 5.0mm screw using the Phillips #0 head screwdriver.

Step 2



- Insert metal spudger as shown in the picture. Move spudger along to the other side until both snaps come loose.

Step 3



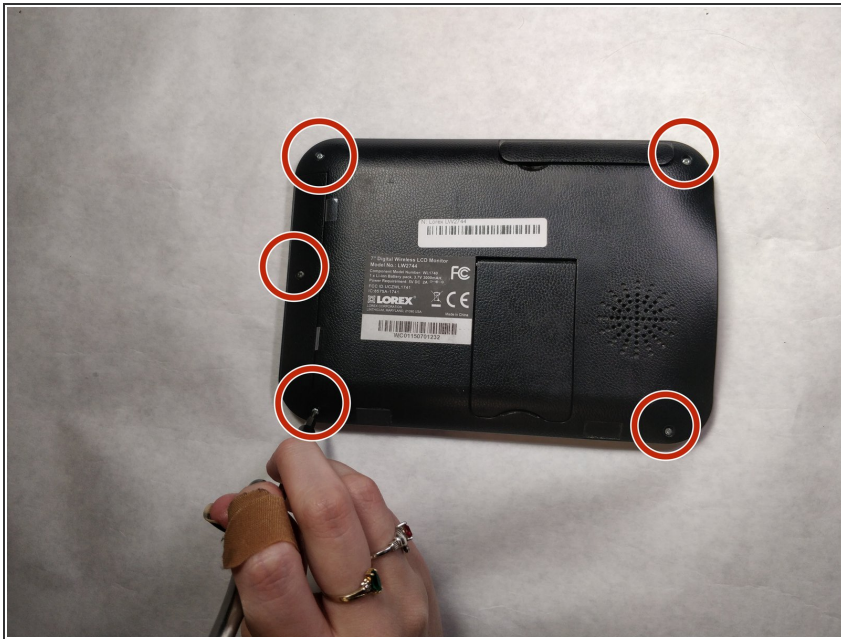
- Picture shows the removed battery cover.

Step 4



- Slide the battery out by pulling on one of two plastics tabs.

Step 5 — Wi-Fi Antenna



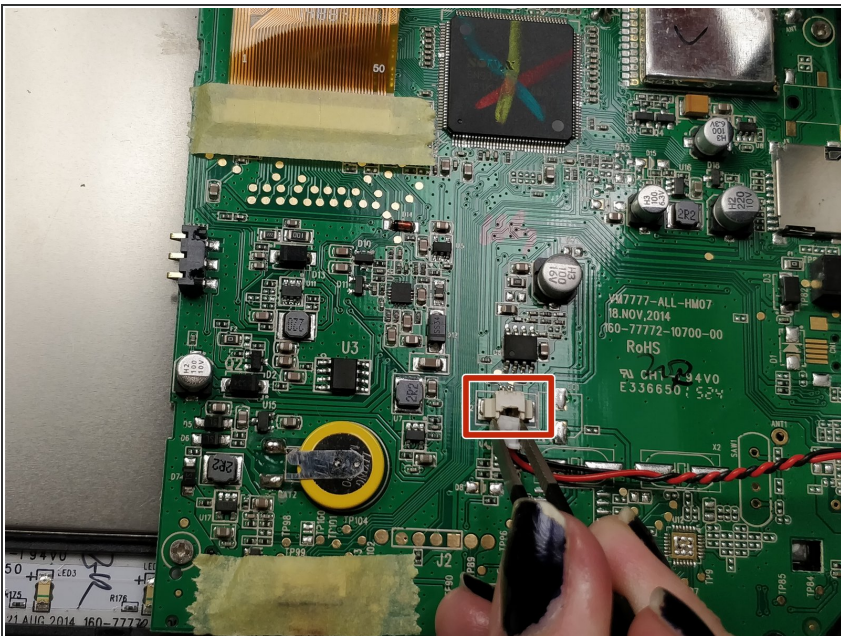
- Remove the remaining five 6.0 mm Phillips #0 screws.

Step 6



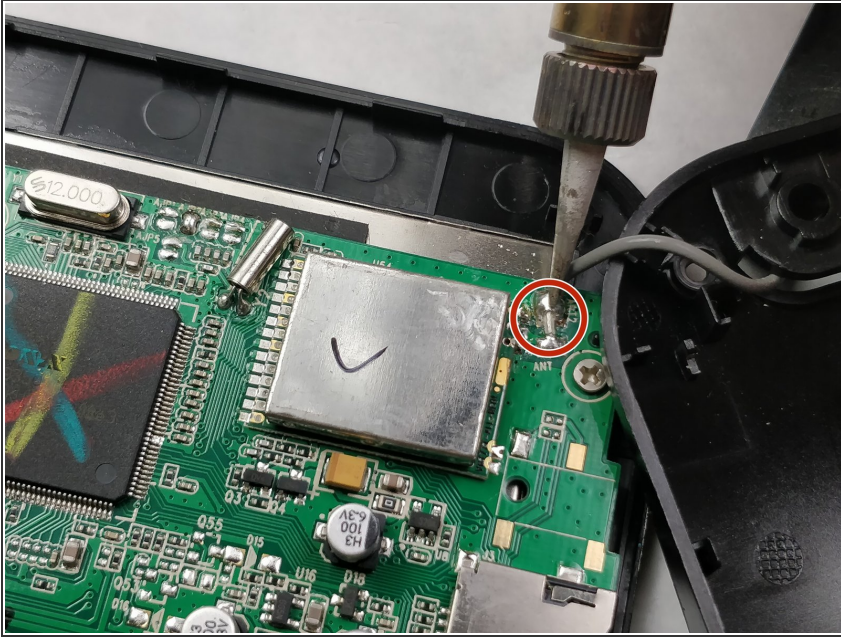
- Use the spudger to remove the back cover. Insert the spudger between the back and front cover. Once inserted, you will need to move it around the perimeter to release the snaps holding it together.

Step 7



- Once back cover is removed, the speaker wire will need to be removed. Use tweezers to remove wire.

Step 8



- Begin by heating the exposed end of the grey lead with the tip of a soldering iron while simultaneously pulling the lead away from the connection, using tweezers to grasp the lead by the insulation.

ⓘ For more information on soldering, check out this repair guide: [iFixit Soldering](#)

To reassemble your device, follow these instructions in reverse order.