



Lorex LW2744 Battery Replacement

How to replace the battery in a Lorex LW2744.

Written By: Yancey Crase



INTRODUCTION

This guide shows how to remove the battery cover and battery of this device. It shows the location of the screw and where to insert the spudger.



TOOLS:

- [Metal Spudger](#) (1)
- [Phillips #0 Screwdriver](#) (1)



PARTS:

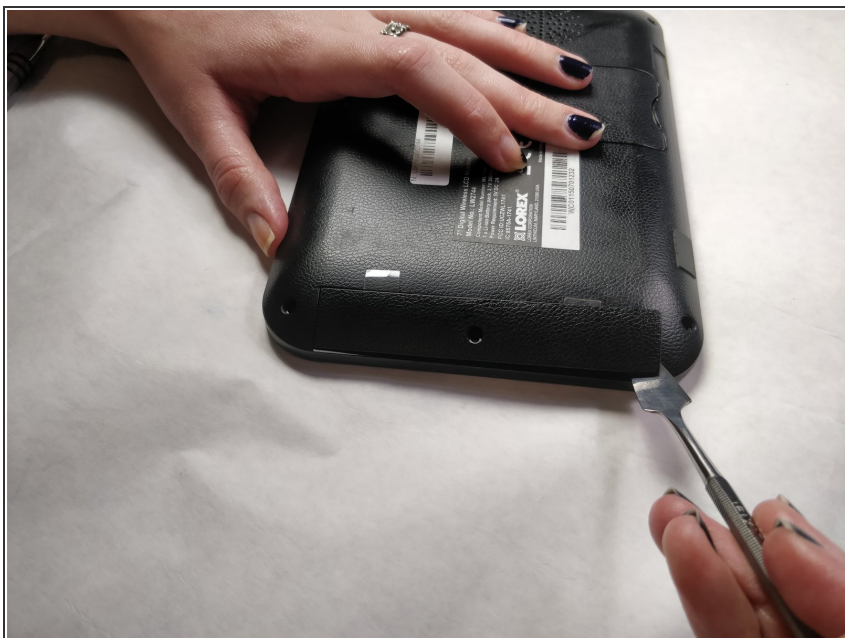
- [Model 4170102 \(Battery\)](#) (1)

Step 1 — Battery



- Remove the 5.0mm screw using the Phillips #0 head screwdriver.

Step 2



- Insert metal spudger as shown in the picture. Move spudger along to the other side until both snaps come loose.

Step 3



- Picture shows the removed battery cover.

Step 4



- Slide the battery out by pulling on one of two plastics tabs.

To reassemble your device, follow these instructions in reverse order.