



# Sonos One Mid-Woofer Diaphragm Repair/ Replacement

This guide will demonstrate how to repair the diaphragm of the Sonos One mid-woofer.

Written By: Marcus Glowa



# INTRODUCTION

This guide is for the replacement of the woofer diaphragm for the Sonos One.

Important: Accessing the internals of the Sonos One will void the factory warranty and make the unit rejected for factory repair, even if warranty is expired.



## TOOLS:

- [TR10 Torx Security Screwdriver](#) (1)
  - [TR8 Torx Security Screwdriver](#) (1)
  - [iFixit Opening Tool](#) (1)
  - [Spudger](#) (1)
-

## Step 1 — Protective Cover



- Disconnect all power cords.
- Remove the rubber foot and plastic screw guard on the bottom of the device using a plastic opening tool.
- Note: the rubber foot and plastic screw guard can be removed as one piece to make reassembly easier

## Step 2



- Remove the four 10mm Torx T10 screws from the bottom of the speaker.

### Step 3



- Remove the bottom cover by squeezing the protective cover slightly while pushing up with your fingers.

### Step 4



- ⓘ The protective cover clip is very thin and deforms easily.

- Remove the single 8mm Torx T10 screw and protective cover clip.



## Step 5



- Slide the protective cover upwards to remove.

## Step 6 — Control Panel & Microphone



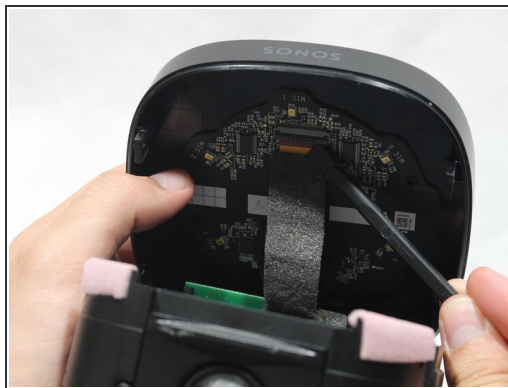
- ⓘ Use the pointed end of a spudger to remove the covers that hide the screws.
- Remove the four 9mm Torx T8 screws from around the perimeter of the control panel.

## Step 7



- With the front of the unit facing you, lift the control panel up using your thumbs.
- ⓘ There's a ribbon cable attaching the control panel to the speaker so work slowly.

## Step 8



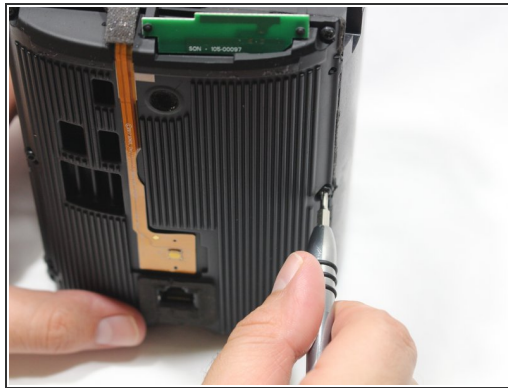
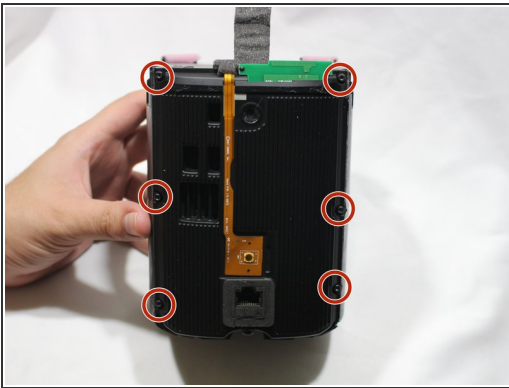
- Use a spudger to flip up the retaining flap on the control panel ribbon cable [ZIF](#) socket.
- Pull the control panel ribbon cable out of its socket.

## Step 9



- Pull the control panel away from the speaker to separate.

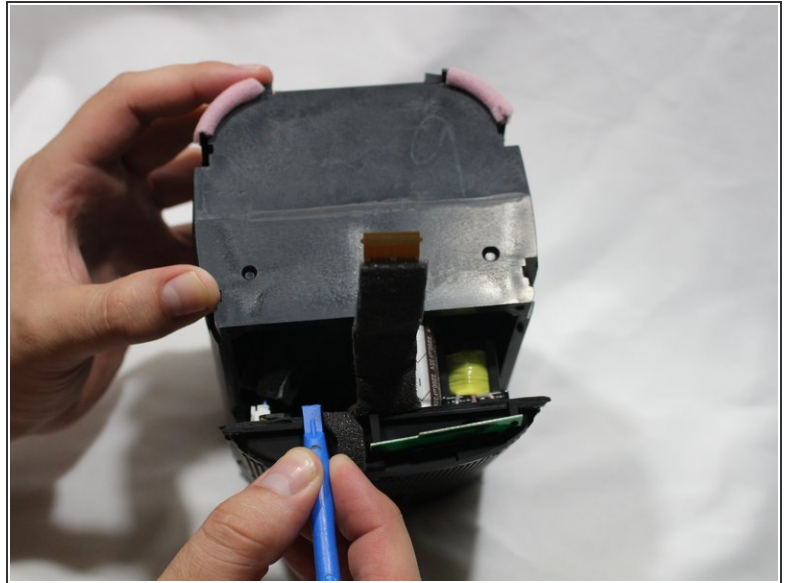
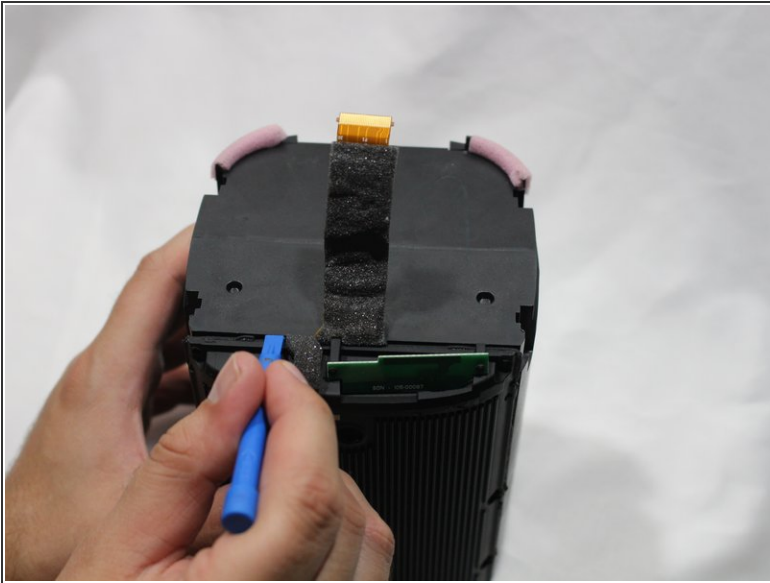
## Step 10 — Power Adapter Receptacle



- Remove the six 9mm Torx T8 screws from the motherboard panel.

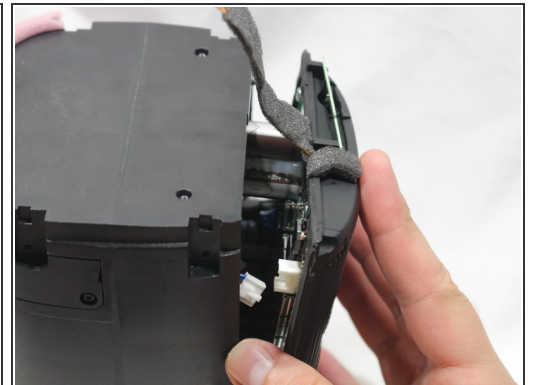
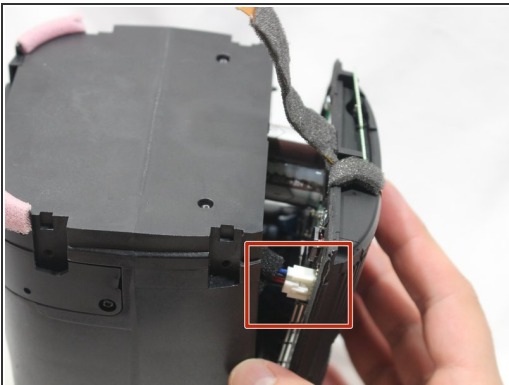


## Step 11



- Using a plastic opening tool, separate the motherboard from the speaker.

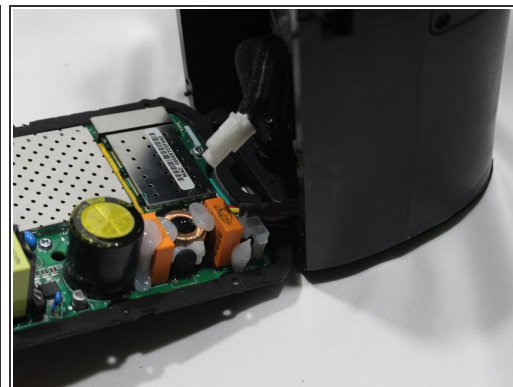
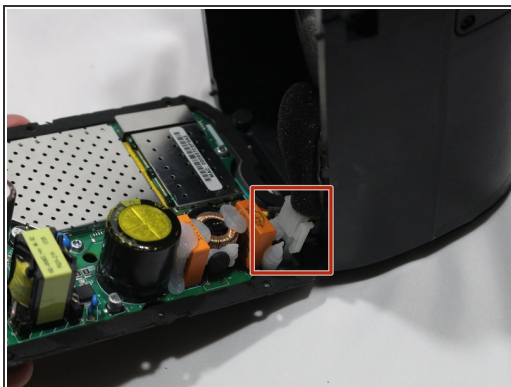
## Step 12



- Using your thumb, disconnect the speaker cable from the motherboard.

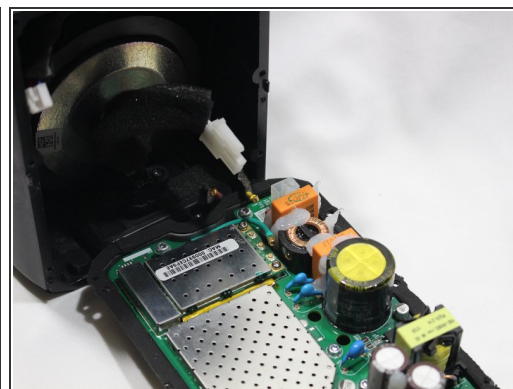
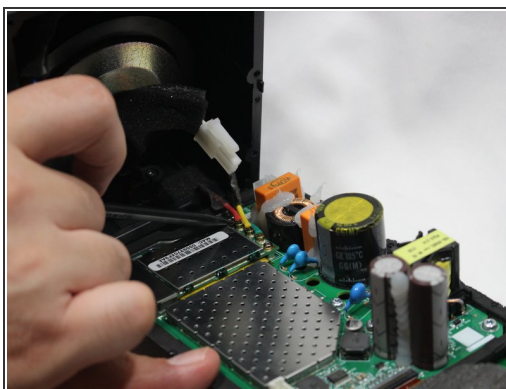
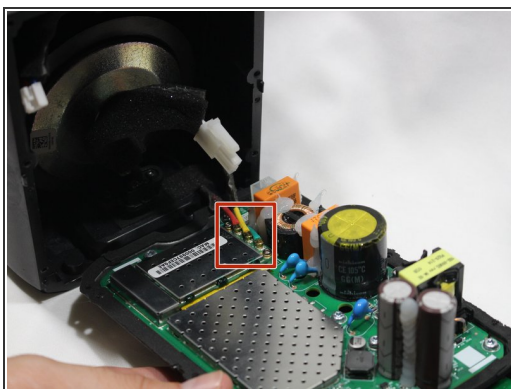


## Step 13



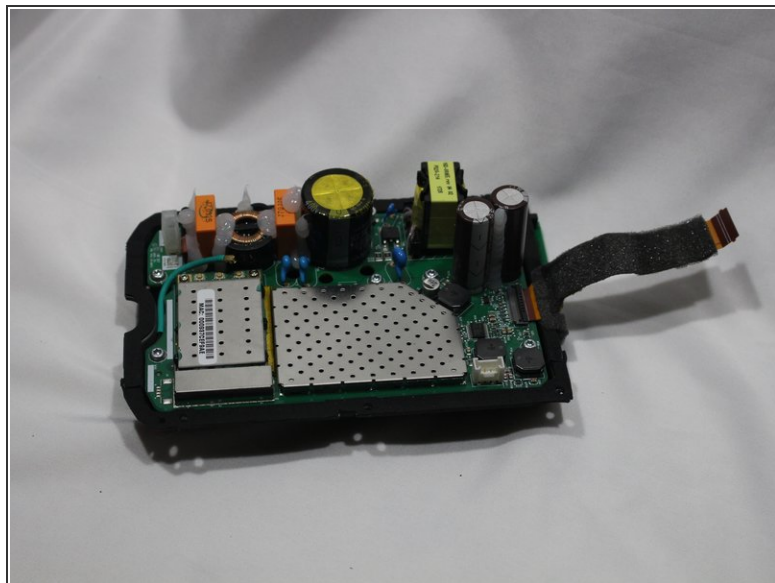
- Disconnect the power adapter plug from the motherboard using your thumb.

## Step 14



- Using the pointed end of the spudger, disconnect the red, green, and yellow cables connecting the WiFi transmitter/receiver.

## Step 15



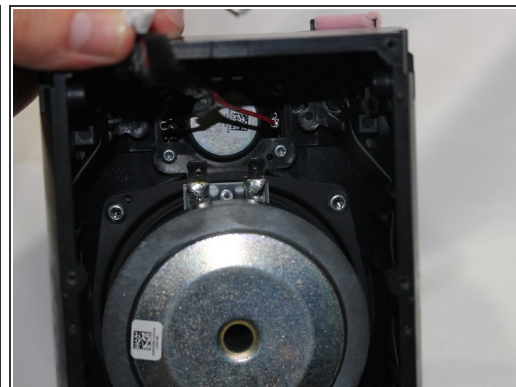
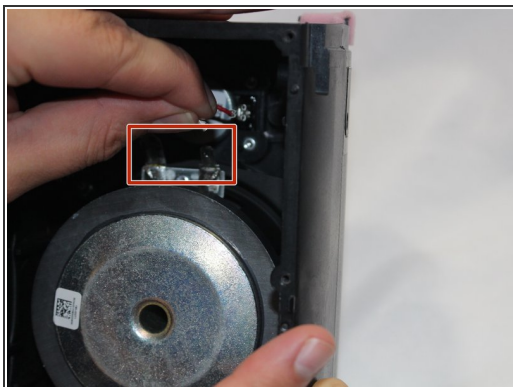
- Remove the motherboard panel from the speaker housing.

## Step 16



- ⓘ The woofer is highly magnetic, making removal of the metal screws sometimes difficult.
- Remove the two 9mm Torx T8 screws from the power adapter plug.
- Remove the power adapter receptacle from its housing slot.

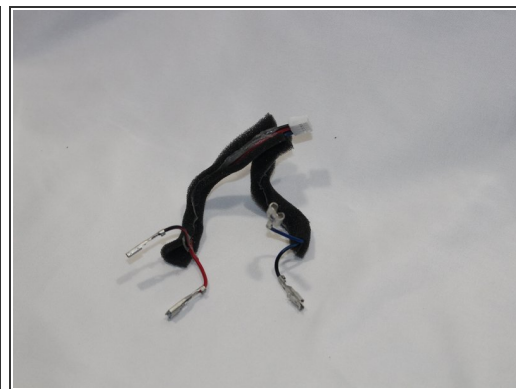
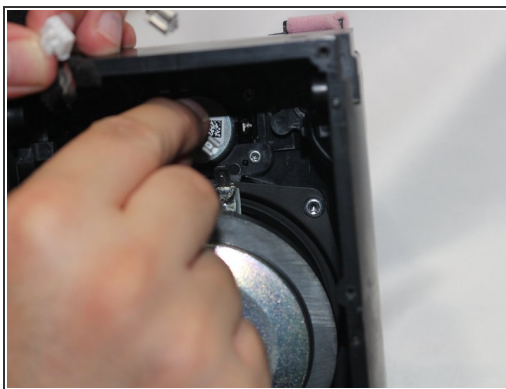
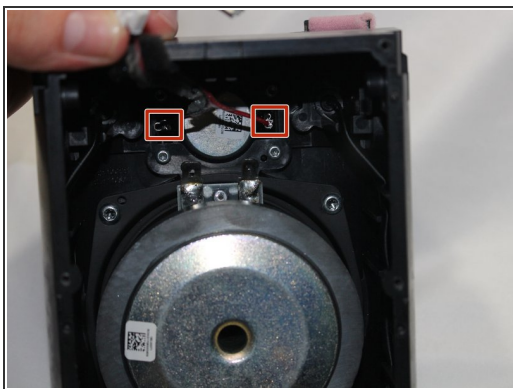
## Step 17 — Tweeter Diaphragm



- Disconnect the woofer cables.

**i** If removing the tabs is difficult, the flat end of the spudger may be used to depress the middle tab and then the tab may be pulled to disconnect.

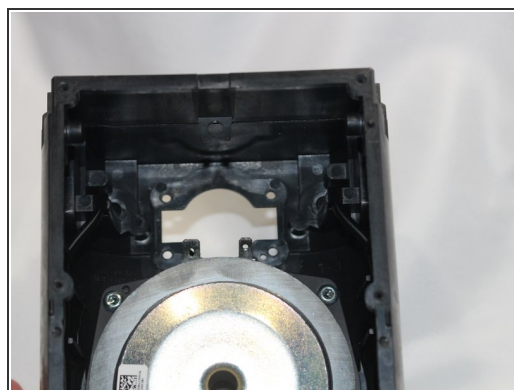
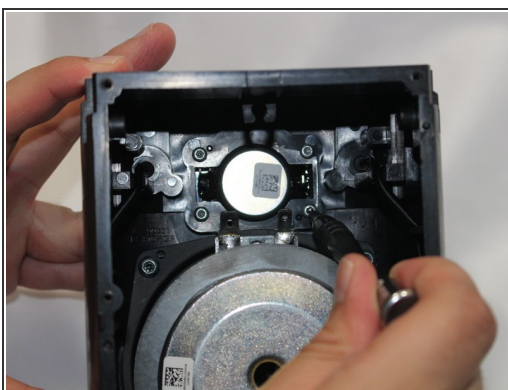
## Step 18



- Disconnect the cables from the tweeter.

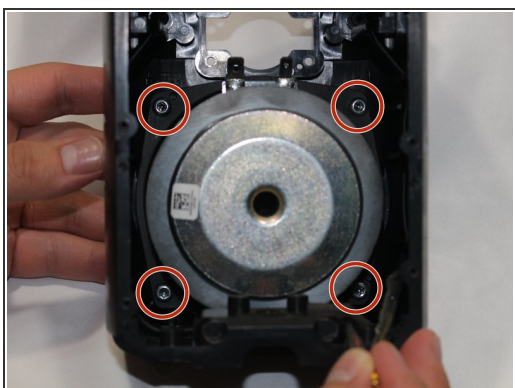


## Step 19



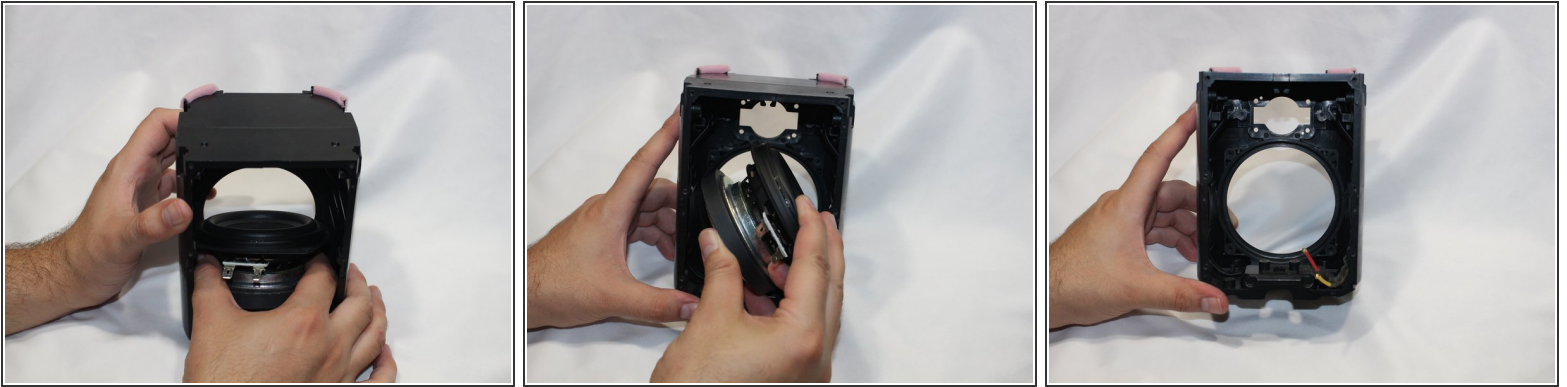
- Remove the four 10mm Torx T10 screws from the tweeter.
- Remove the tweeter from the speaker housing.

## Step 20 — Woofer Diaphragm



- Remove the four 10mm Torx T10 screws from the woofer.

## Step 21



**i** The woofer is snugly fit into the frame socket, some careful manipulation is required to remove the woofer from the housing.

- Remove the woofer from the speaker housing.

To reassemble your device, follow these instructions in reverse order.