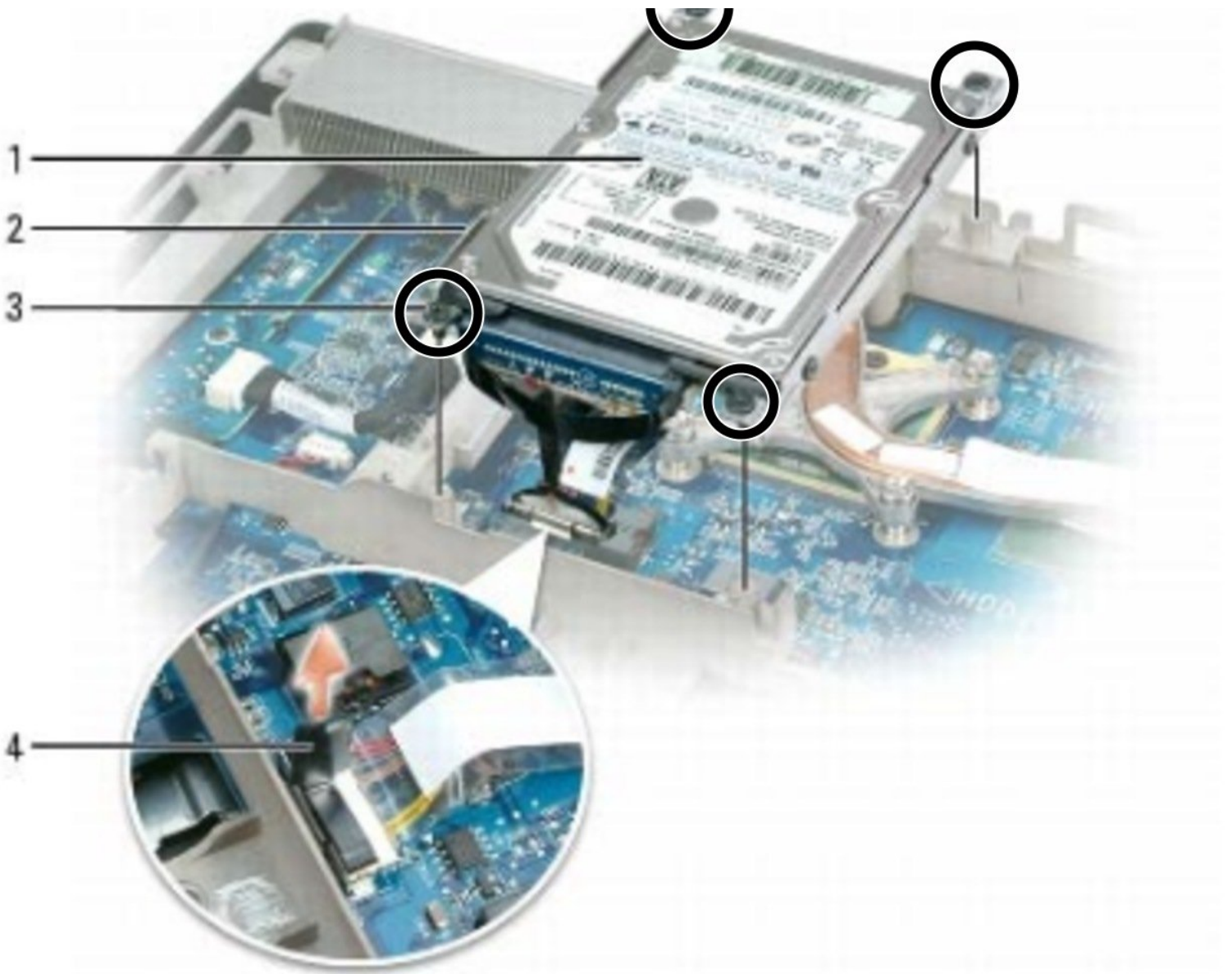




XPS M2010 MXP061 Hard Drive Replacement

Hard drive replacement (2.5") for the Dell XPS M2010 MXP061 laptop.

Written By: Johnathan Hammond



INTRODUCTION

Hard drive replacement (2.5") for the Dell XPS M2010 MXP061 laptop.

This computer has a primary hard drive on the left side of the system (viewed from the top) and a secondary hard drive on the right side. Since this computer has more than one hard drive, the hard drives may be in a RAID configuration. You may need to reconfigure the RAID configuration on the new hard drive(s) that you install.

The information and pictures in this guide have been taken from the service manual from this device, listed on the iFixit product page. If you need any additional information on disassembling this device, please consult the service manual.



TOOLS:

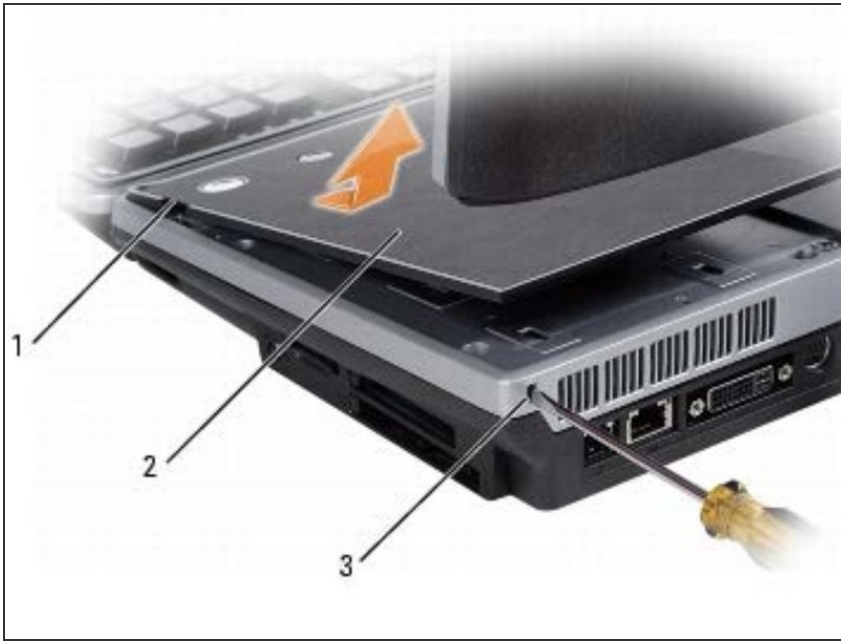
- [2.5 mm Flathead Screwdriver](#) (1)
- [Phillips #0 Screwdriver](#) (1)



PARTS:

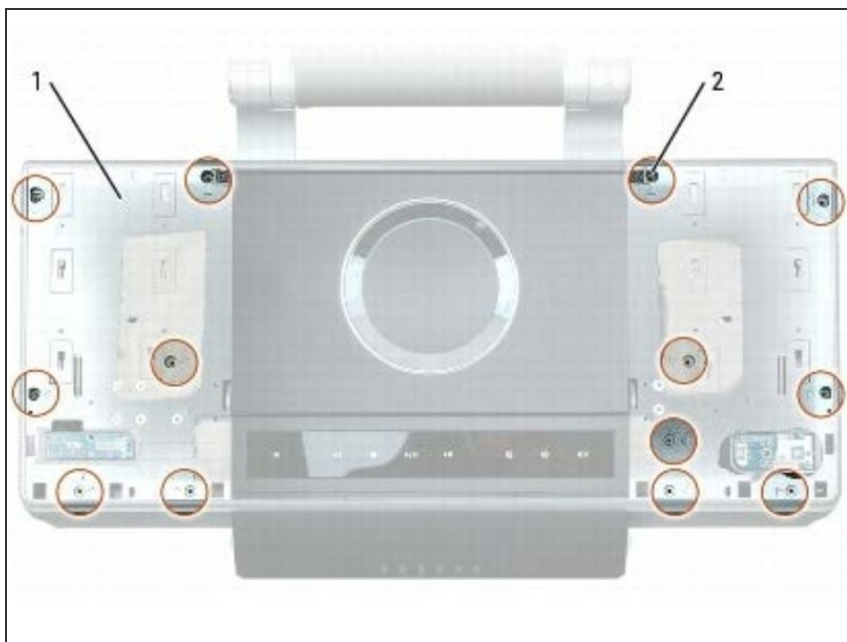
- [250 GB SSD](#) (1)
- [500 GB SSD](#) (1)
- [1 TB SSD](#) (1)
- [2 TB SSD](#) (1)

Step 1 — Removing the Cosmetic Cover



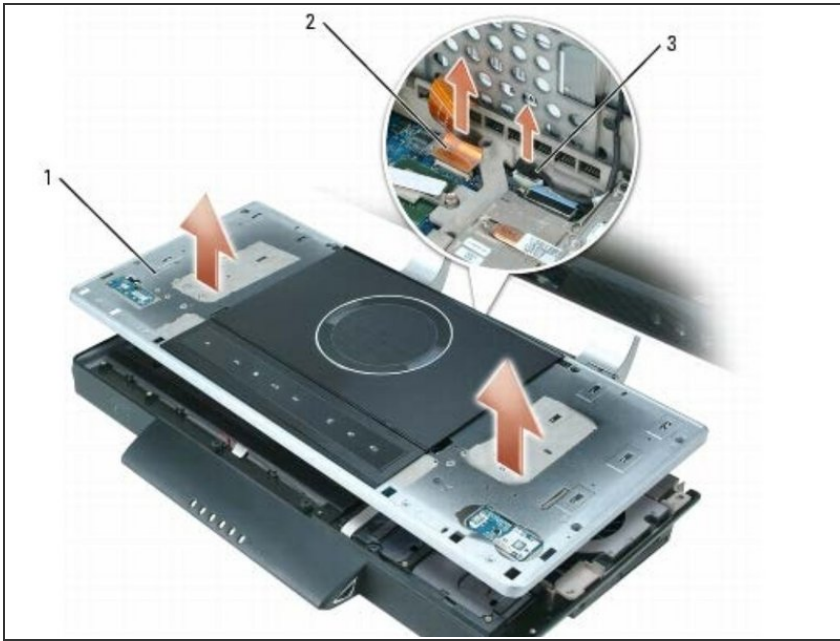
- After turning off the computer and opening the display, remove the keyboard from the computer.
- With a flat-head screwdriver, press in the cover-release slot (#3) on the side of the computer.
- While holding the screwdriver in (so that the button inside the slot is still being held), lift up the cosmetic cover (#2) by the cosmetic-cover notch (#1).

Step 2 — Removing the Top Cover: Screws



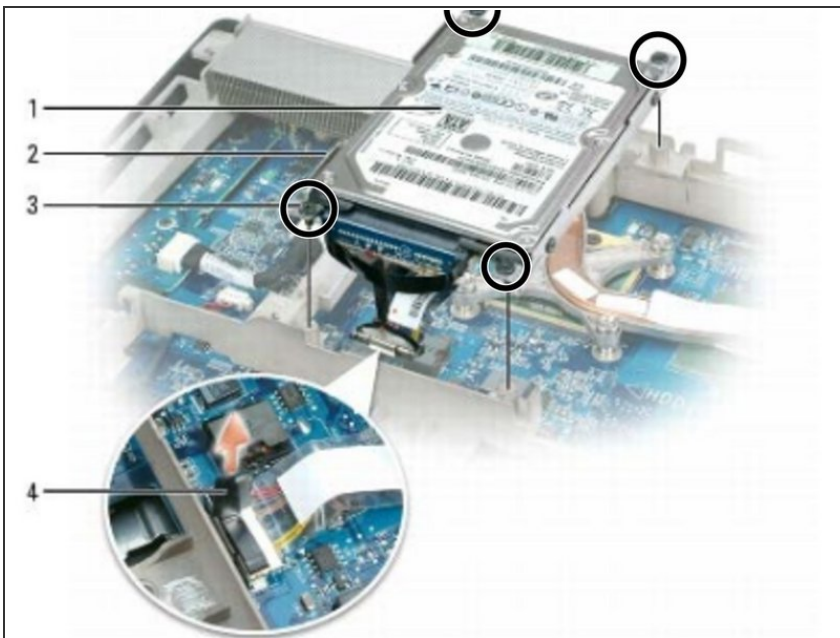
- Unscrew the six M2.5 x 5-mm screws on the left side (#1) of the top cover, then unscrew the seven M2.5 x 5-mm screws on the right side (#2) of the top cover.

Step 3 — Removing the Top Cover: Cables



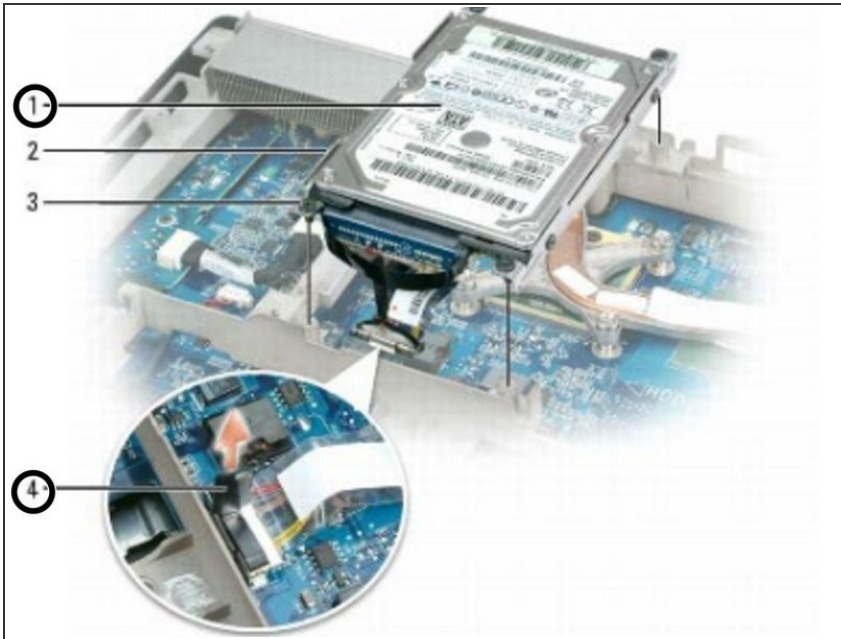
- ⓘ Slightly lift up the top cover, but do not fully remove it. Two cables are connected to the top cover, and they could be damaged if the top cover is improperly removed.
- While holding the top cover up, unplug the two cable connectors by pulling up on the pull loop or connector.

Step 4 — Free Hard Drive



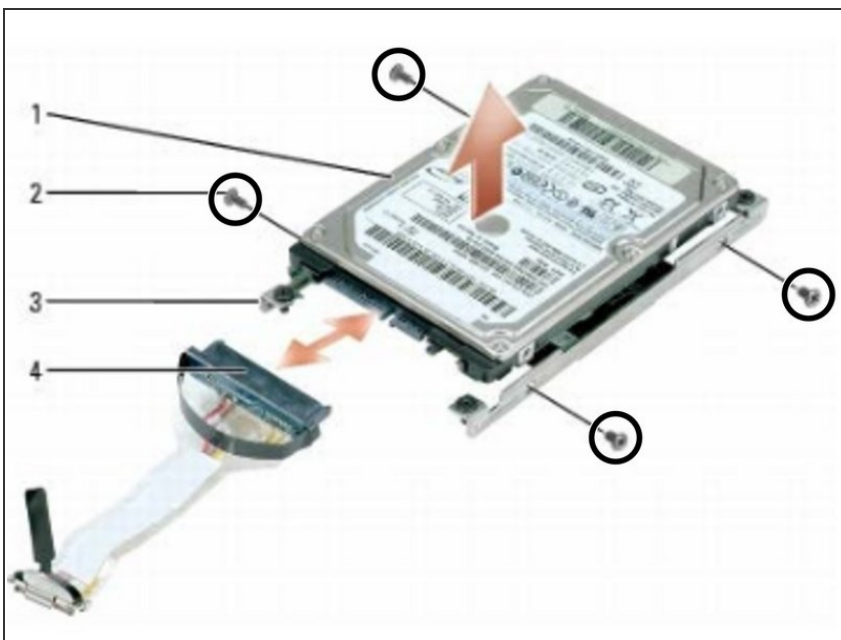
- Loosen the four captive screws on each corner of the hard drive bracket.

Step 5 — Remove Hard Drive From Sytem



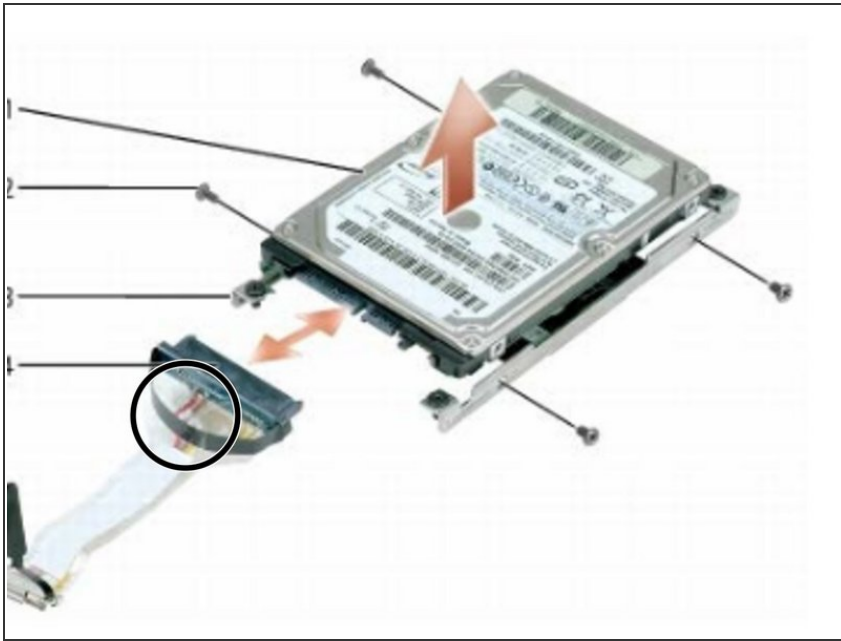
- Lift the hard drive only a few inches, and disconnect the data cable from the system board by pulling up on the black tab.
- ⓘ NOTICE: When the hard drive is not in the computer, store it in protective antistatic packaging or on a surface that does not conduct electricity, like wood.

Step 6 — Remove Hard Drive From Bracket



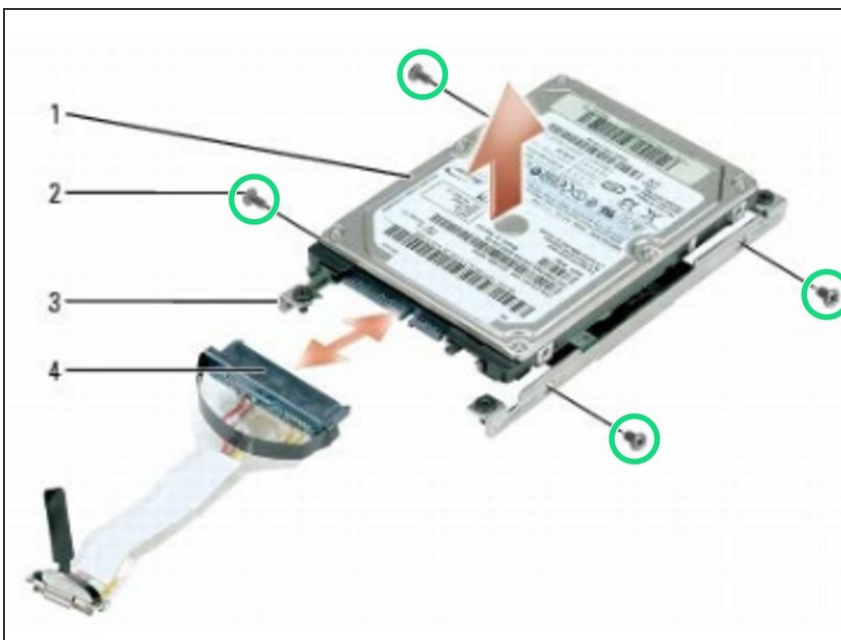
- Remove the four M3 x 3-mm screws that attach the hard drive to the hard drive bracket.

Step 7 — Disconnect Hard Drive From Cable



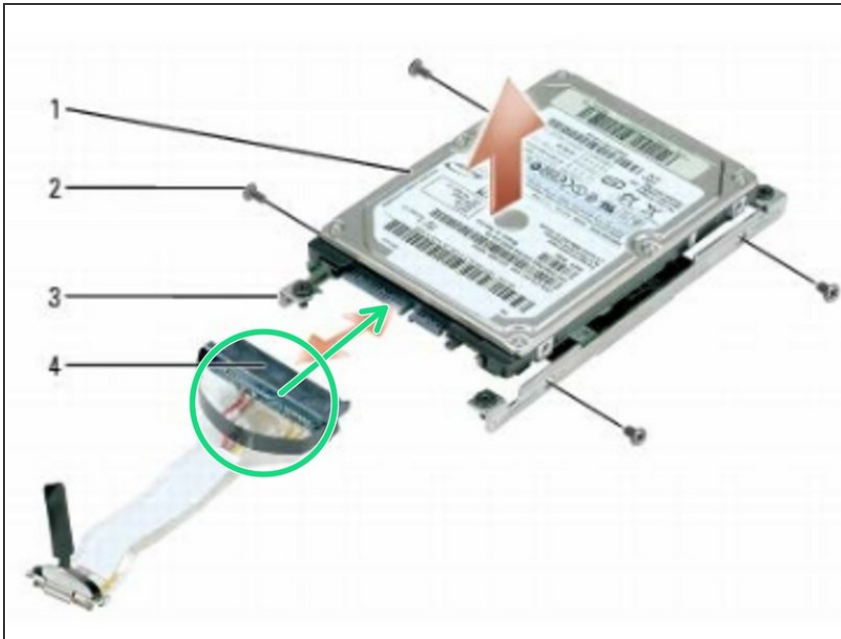
- Pull the strap on the hard drive cable to remove the data cable from the hard drive. Reserve this cable for use with the new hard drive.

Step 8 — Attach New Hard Drive to Bracket



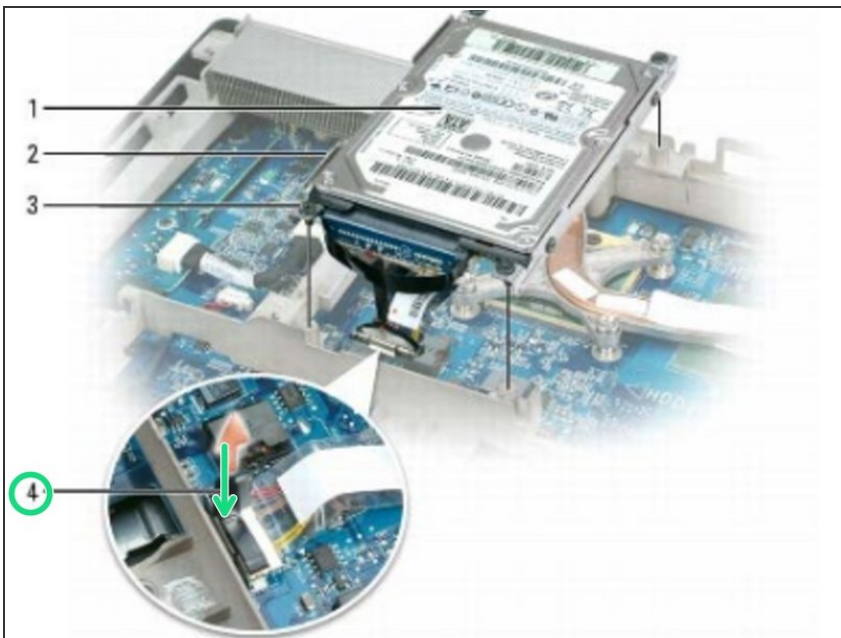
- Attach the new hard drive to the brackets using four M3 x 3-mm screws.

Step 9 — Connect To Data Cable



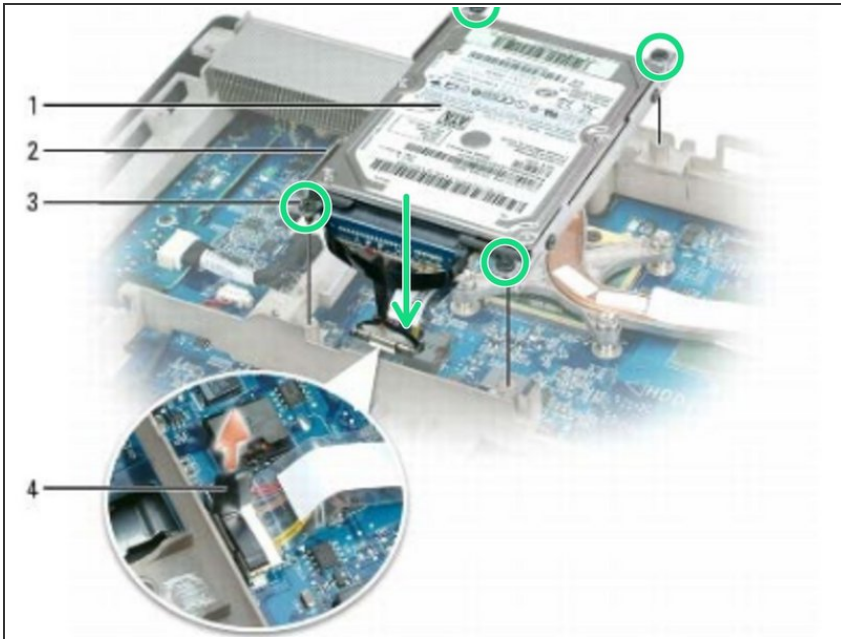
- Connect the data cable to the new hard drive.

Step 10 — Data Cable to System Board



- Connect the hard drive cable to the appropriate connector on the system board

Step 11 — Secure hard drive to system



- Align the captive screws in each corner of the hard drive with the holes in the frame and tighten the screws.