



# How to Reattach the Support Bracket in a Hamilton Beach 2-Slice Toaster

Repair the support bracket in your toaster, and make your toaster fully functional again.

Written By: Tori Mobley



## INTRODUCTION

In this guide, we will be demonstrating the repair of a support bracket that has detached from the moving bracket assembly in a Hamilton Beach toaster. When you are finished with this repair, your toaster will be fully functional again.

The support bracket is the part of a toaster that holds the bread. If the support bracket is broken, you will not be able lower bread into the toaster or lift it out using the toasting lever.

This repair requires very little background knowledge or repair experience. However, you will need some patience and a steady hand. It might be helpful to have an assistant help you complete this repair.



### TOOLS:

- [Phillips #1 Screwdriver](#) (1)
  - [Flashlight](#) (1)
-

## Step 1 — How to Reattach the Support Bracket in a Hamilton Beach 2-Slice Toaster



- Remove all five 5mm Phillips #1 screws from the bottom of the toaster.

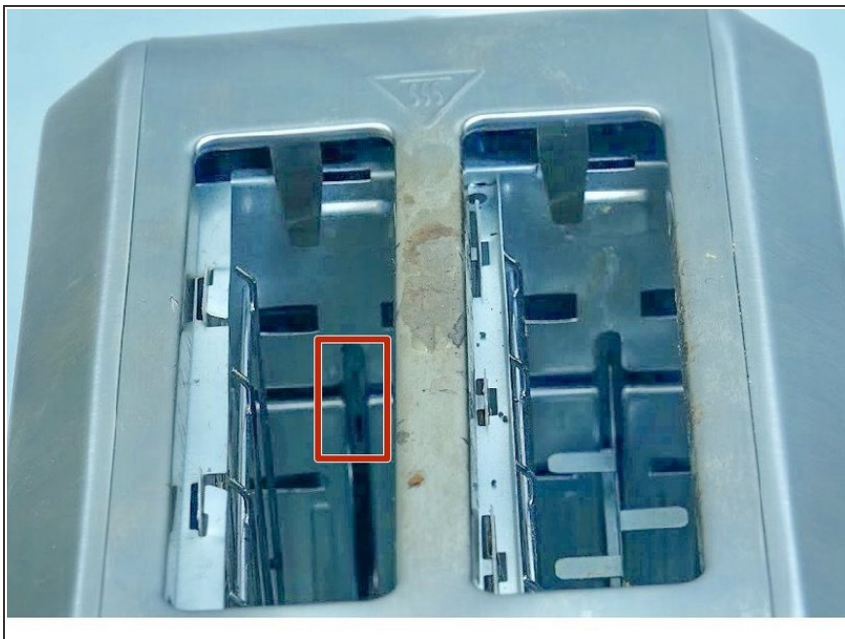
## Step 2



- Lift the top of the toaster from the bottom section of the toaster.

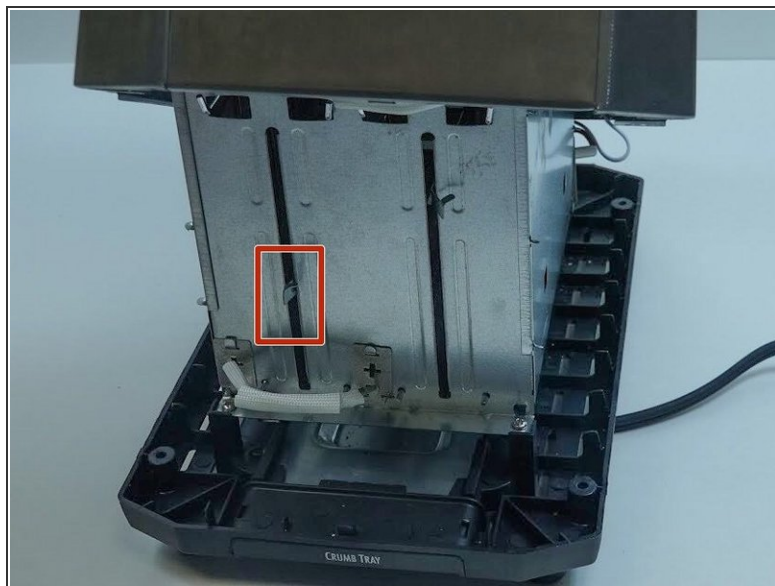
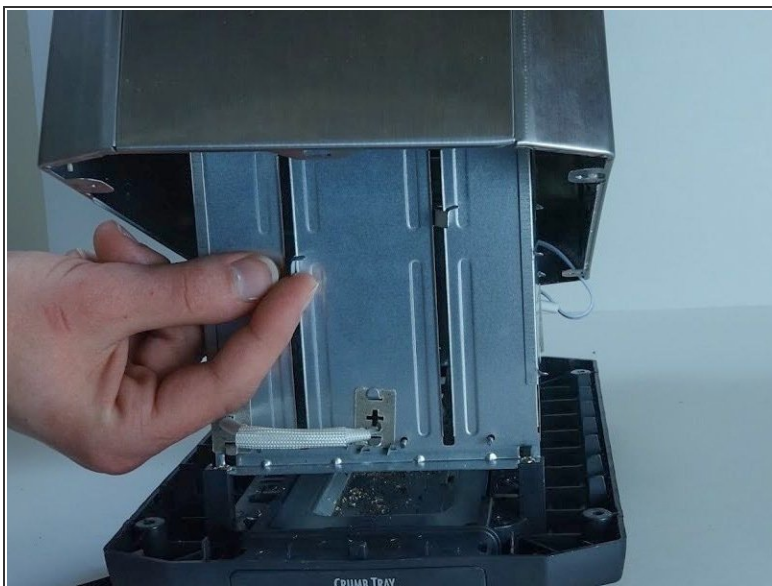
⚠ Do this carefully so that you don't damage the switch board.

### Step 3



- Look into the toaster and locate the two divots that the support bracket has detached from.

### Step 4



- Locate the detached support bracket.
- ⓘ From the back of the toaster (the side opposite the side of the toasting lever), you will see the broken support bracket sticking out.

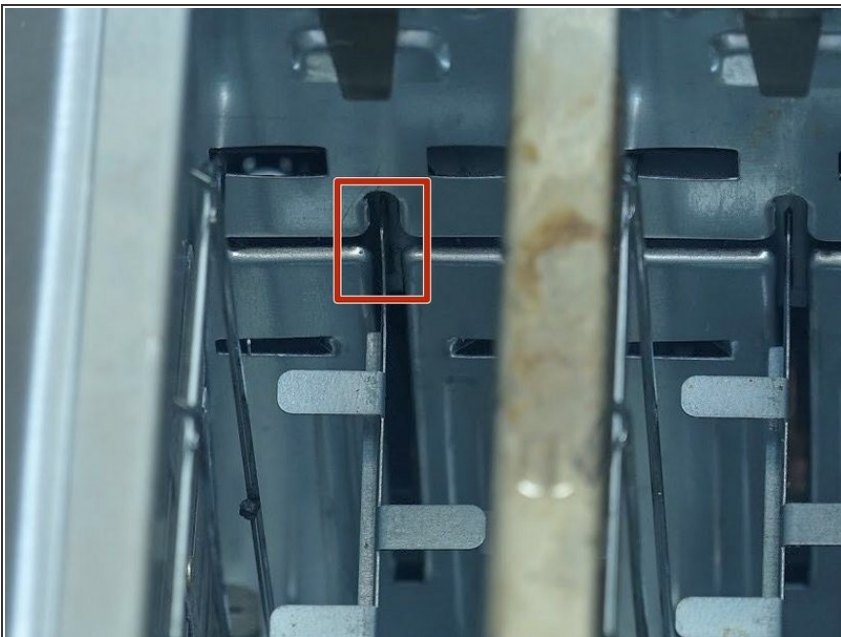


## Step 5



- Use the portion of the bracket that is sticking out of the back of the toaster to move the support bracket.
- Align the support bracket with the two divots on the moving bracket assembly.
- ⓘ In this particular model, the shell of the toaster cannot be completely removed. It might be helpful to have a helper hold up the shell of the toaster so that it is not in your way.

## Step 6



- Using moderate force, push the teeth of the support bracket into the divots on the moving bracket assembly.
- ★ If the teeth on the support bracket are damaged, further repair might be necessary in order for them to fit into the divots.

## Step 7



- Carefully lower the shell of the toaster back down to its base.
- Lift and lower the toasting lever a few times to ensure that the support bracket is firmly in place.

## Step 8



- Screw on the bottom of the toaster using all five 5mm Phillips #1 screws.

Follow these steps and your toaster will be as good as new!