



# Panasonic Lumix DMC-FX37 Disassembly

A simple guide on how to remove the front, back, and side panels of the camera. This will allow one to access the internals.

Written By: Jackson O'Donnell



# INTRODUCTION

If you have not disassembled a device similar to this in the past, here are a few tips:

- 1) Always place the screws you remove with their respective slots, this will prevent you from trying to insert a screw that is too big and causing internal damage. (A magnetic mat can help with this!)
- 2) Because this is a smaller device and you will be interacting with some of the circuit boards directly, you may wish to wear an anti-static wrist wrap to prevent damage.
- 3) Ribbon cables (named due to their shape) are quite delicate and should be handled gently if possible. We will be sure to warn you when dealing with these.

Otherwise, this guide will mainly be unscrewing screws.



## TOOLS:

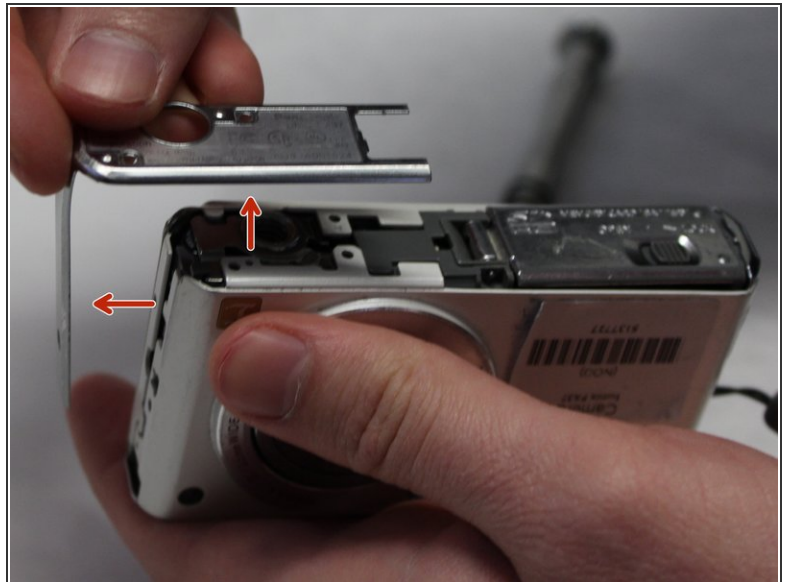
- [Spudger](#) (1)
  - [Phillips #000 Screwdriver](#) (1)
-

## Step 1 — Panasonic Lumix DMC-FX37 Disassembly



- Remove both of the 3 mm screws on the bottom of the camera connected to the side panel.

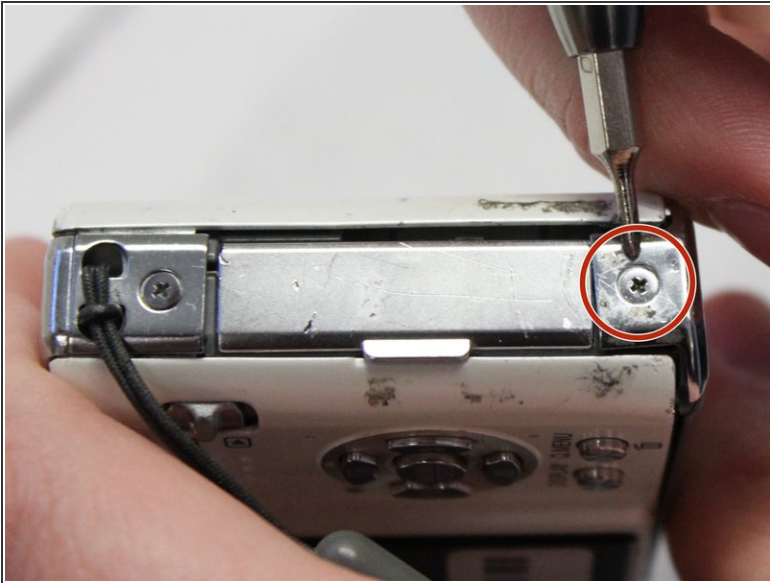
## Step 2



- Remove the remaining 3 mm screw holding on the side panel and remove the panel entirely.

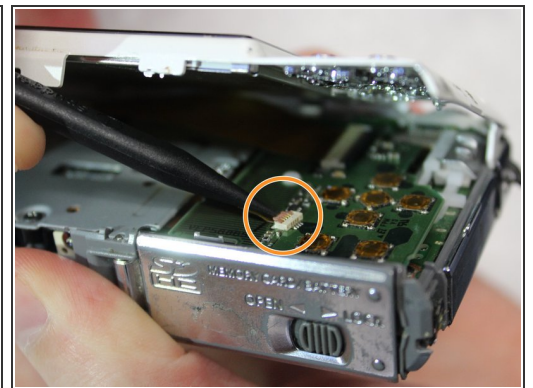
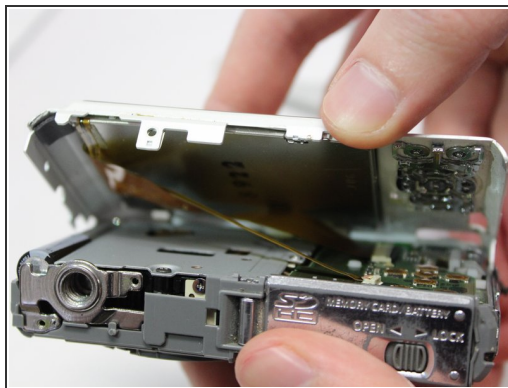
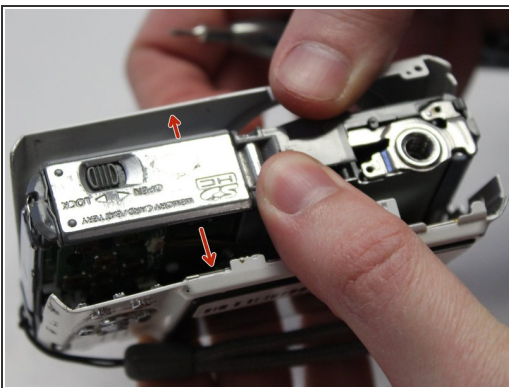


### Step 3



- On the opposite side of the camera, remove the two 3 mm screws.
- Remove the bottom side panel and place it with its respective 3 mm screw.

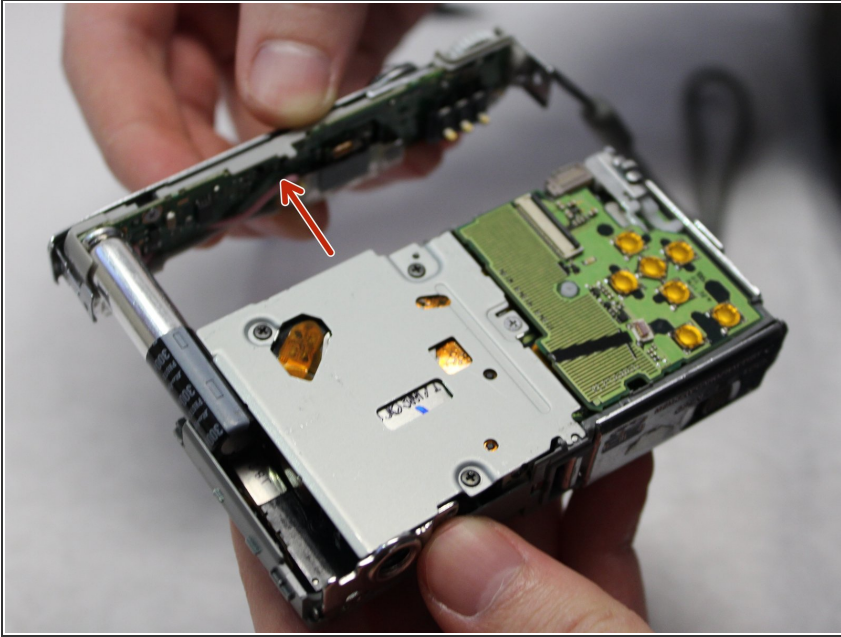
### Step 4



- Remove the front panel (the panel around the lens casing) from the camera.
- Remove the two ribbon cables connected to the back panel (the panel this the LCD screen) by lifting up on their respective tabs and gently pulling out the cord.
- ⚠ Caution: When removing the back panel, the two ribbon cables are relatively delicate and must both be disconnected before the panel can be entirely removed.
- Remove the back panel from the camera.

This document was generated on 2020-11-28 06:29:54 AM (MST).

## Step 5



- Remove the top control panel (connected to the flash battery) from the camera.
- ⚠ The top control panel is connected to the rest of the camera by a delicate multi-pin plug. Be careful as to not bend the pins!

To reassemble your device, follow these instructions in reverse order.