



# eMac Optical Drive Removal

Steps to follow if you'd like to replace or upgrade the optical drive in your eMac.

Written By: Chris Green



---

## INTRODUCTION

Steps to follow if you'd like to replace or upgrade the optical drive in your eMac.

---



### TOOLS:

- [Phillips #2 Screwdriver](#) (1)
  - [2.5 mm Hex Key](#) (1)
-


## Step 1 — Door Removal



- It should be noted that these guides are written based on a late-model eMac (2005, 1.42GHz, DDR). They will differ slightly from the older model eMacs that use PC-133 RAM.
- Lay the eMac screen-down on a flat surface. I've found it convenient to use a carpeted floor because the computer is so heavy.
- Remove the single phillips #2 screw on the RAM door, and remove the door
  - The screw is captive in the door, so don't worry about losing it.

## Step 2 — Bottom Screw Removal



 Before starting this process it's important to note that the eMac can have some seriously dangerous voltages inside of it, thanks to the CRT display. Before working on an eMac, you should unplug it, press the power button to clear any stored charge on the motherboard, and then let it sit for 24-hours (or more) to allow the CRT to discharge.

- You can read more about CRT safety procedures [here](#). If you aren't experienced with working on devices featuring a CRT, it's recommended that you don't proceed any further.
- On the bottom side of the eMac, remove the following screws:
  - A single 2.5mm hex screw
  - Two #2 phillips screws

### Step 3 — Top and Side Screws



- Remove two 2.5mm hex screws from each of the other sides of the computer.

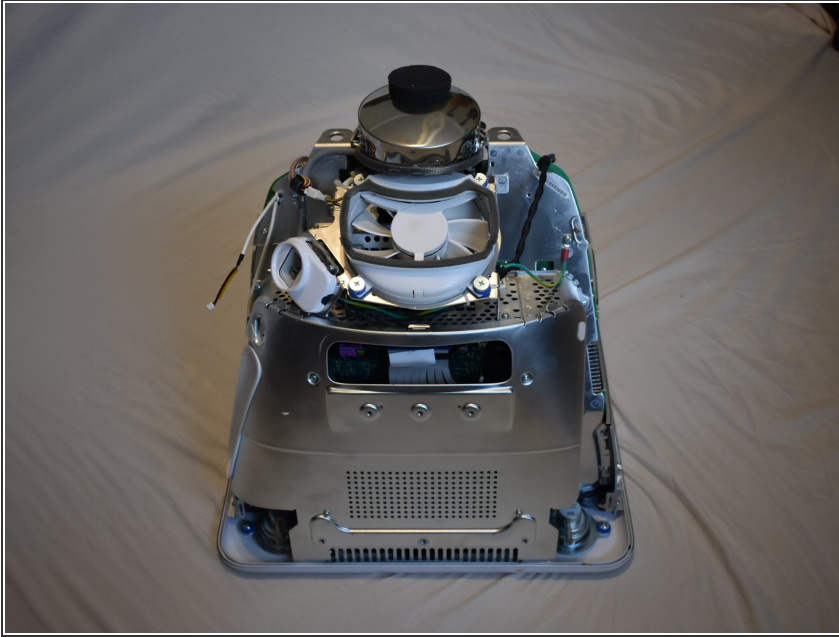
### Step 4 — Power Button Cable



- Now, the shell can almost be separated from the computer.
- ⚠ There is a cable that connects to the power button. This must be disconnected before removing the housing completely.
- Lift the housing enough to allow you to fit your hand through the access door, and disconnect the cable at the power button.

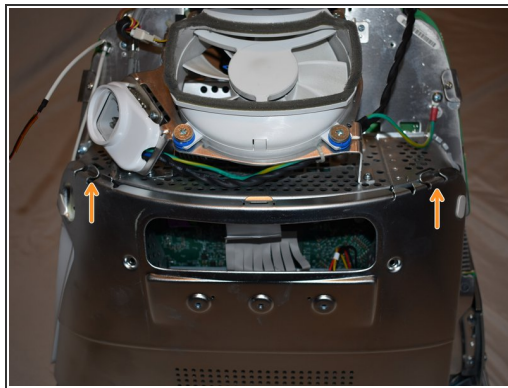
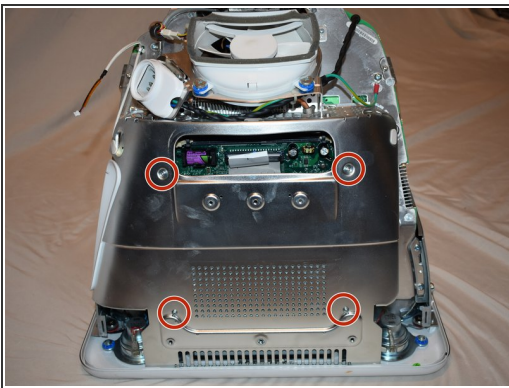


## Step 5 — Shell Removal



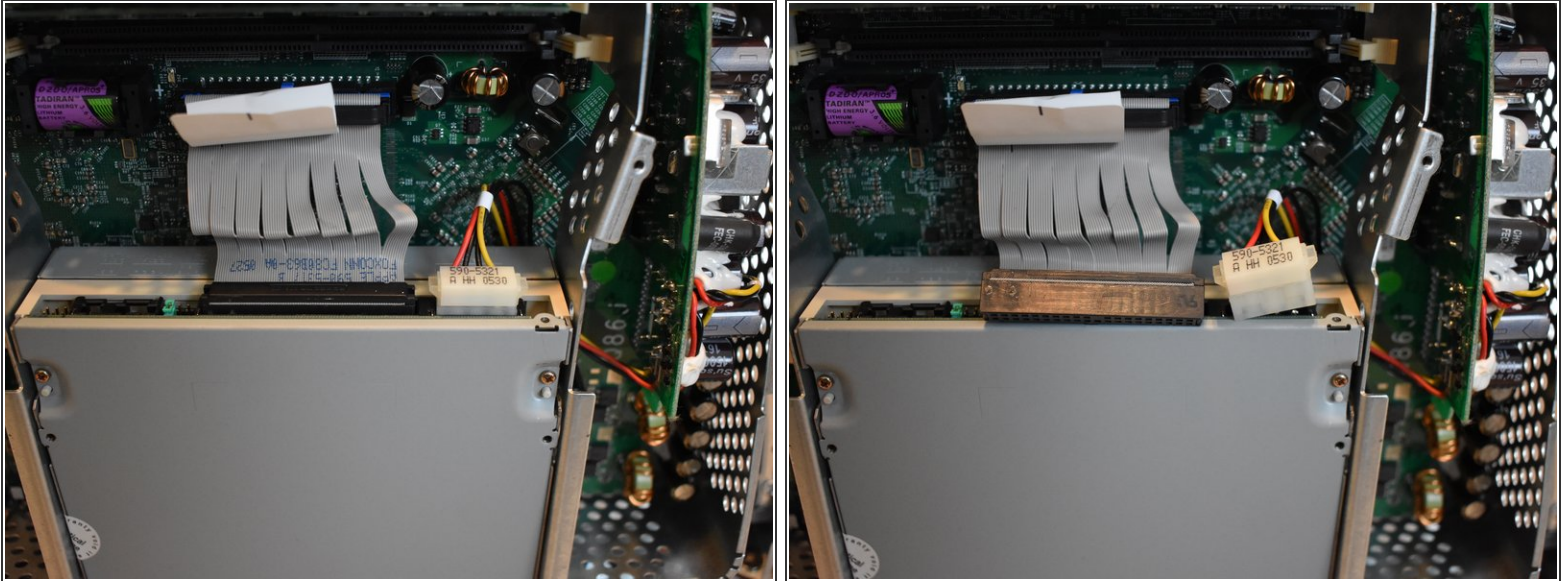
- Now the entire shell can be removed from the computer.

## Step 6 — Panel Removal



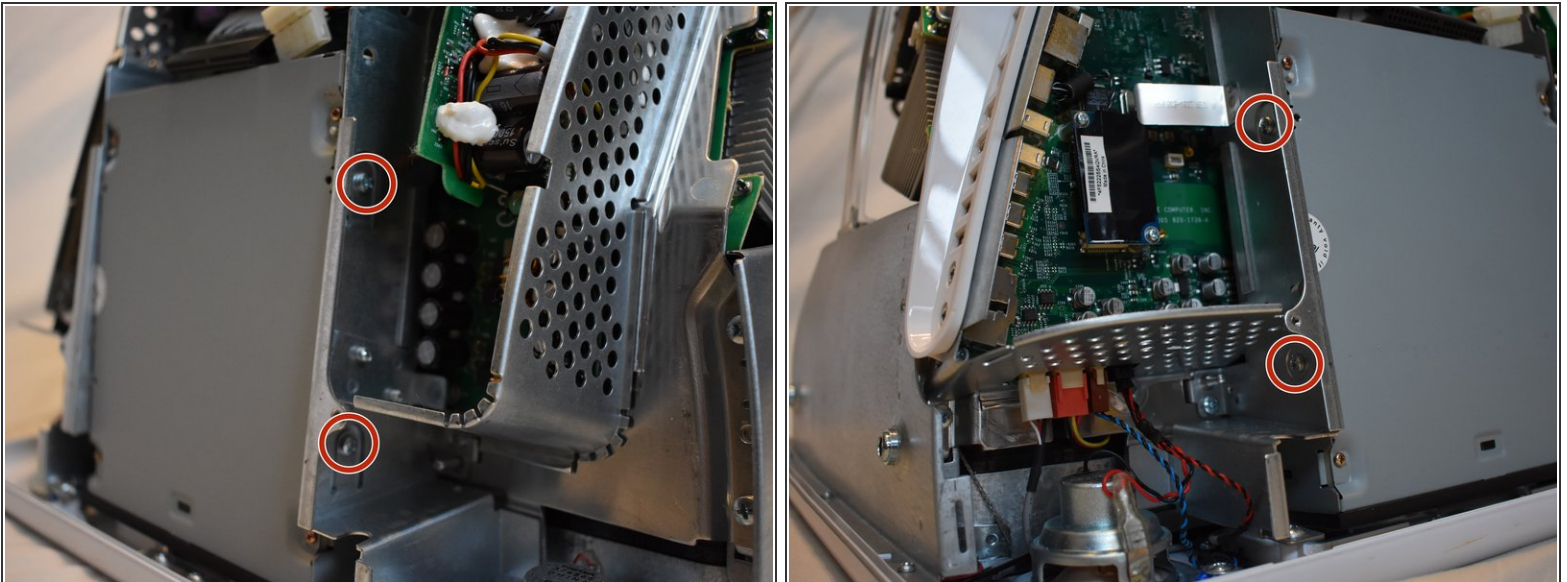
- The motherboard access panel is held on by 4 phillips #2 screws.
- Remove the screws, then use your fingers to pull on the top tabs to separate the panel from the computer frame.

## Step 7 — Cable Removal



- The eMac uses a standard 5.25" IDE optical drive. Most off-the-shelf drives should work as a replacement with minor modification. The jumper setting for the drive should be "CS".
- Start by disconnecting the IDE and power cables from the drive.

## Step 8 — Screw Removal



- The drive is held in by two phillips #2 screws on each side. Remove these.



## Step 9 — Drive Removal



- The drive should now come free.

To reassemble your device, follow these instructions in reverse order.