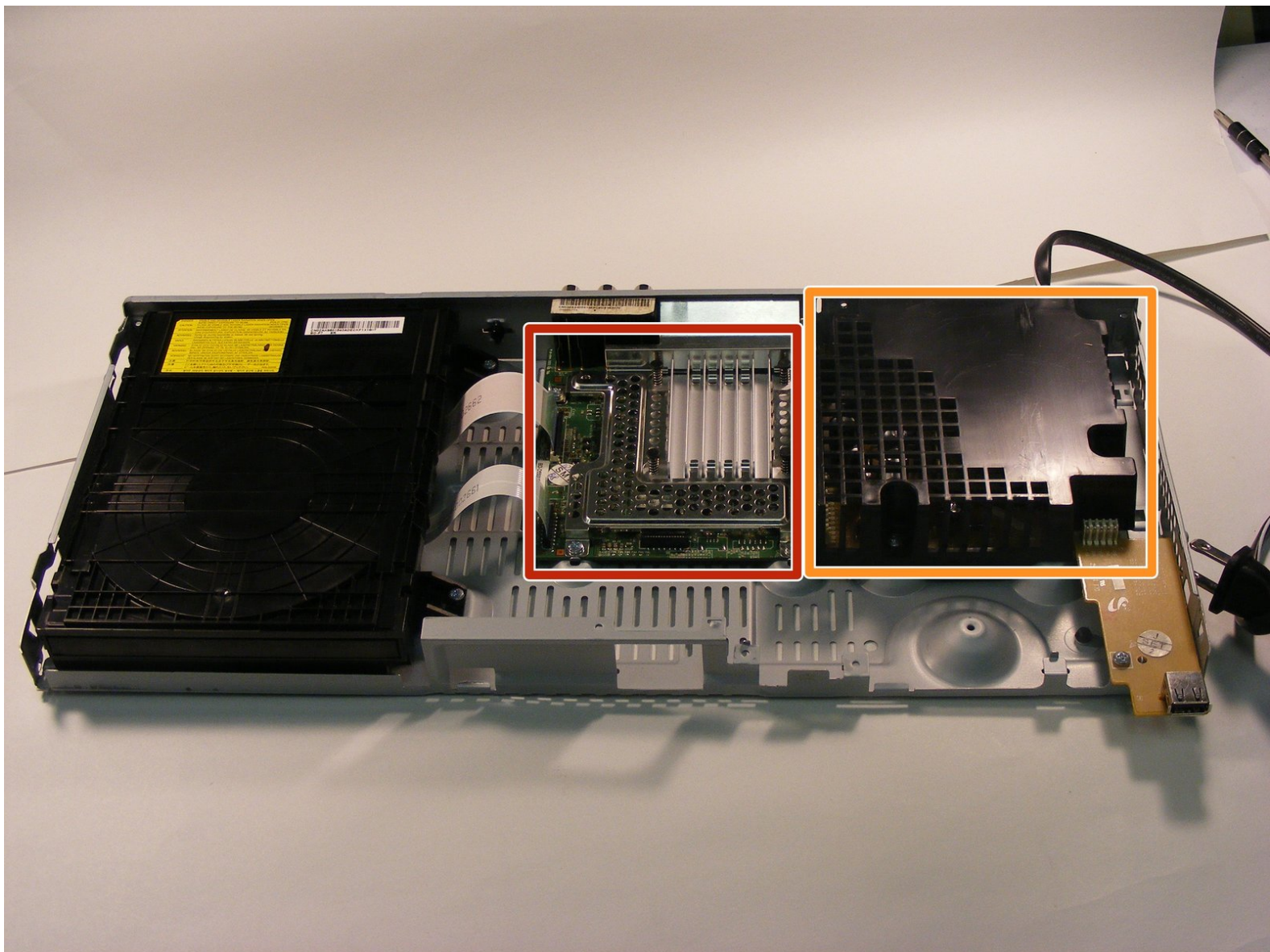




Samsung BD-D5500 Motherboard Replacement

A replacement guide for the Samsung BD-D5500 Motherboard and Power Supply. The motherboard acts a hub to which the other components in the player connect.

Written By: Trevor Neman



INTRODUCTION

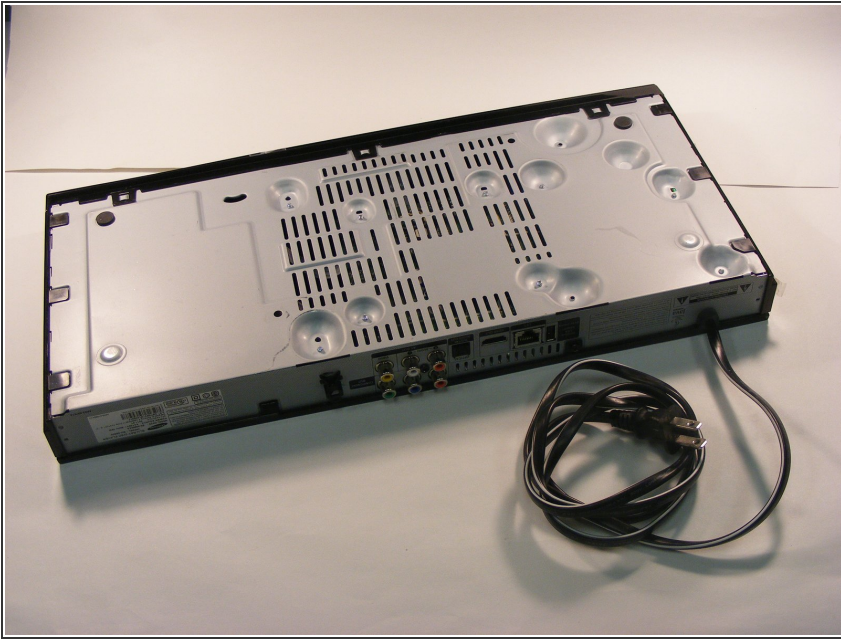
No special requirements are necessary other than a PH2 head screwdriver. Following this guide should help the user fix any problems with powering on the device or the device not responding to discs.



TOOLS:

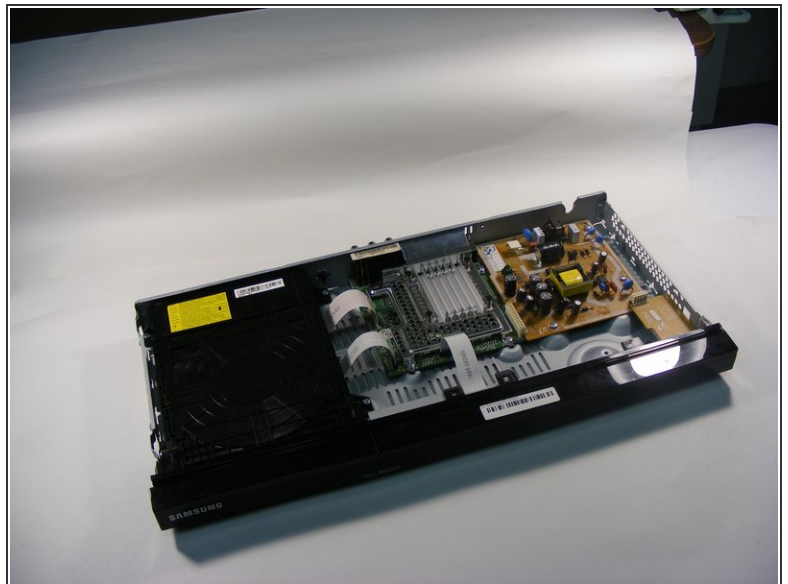
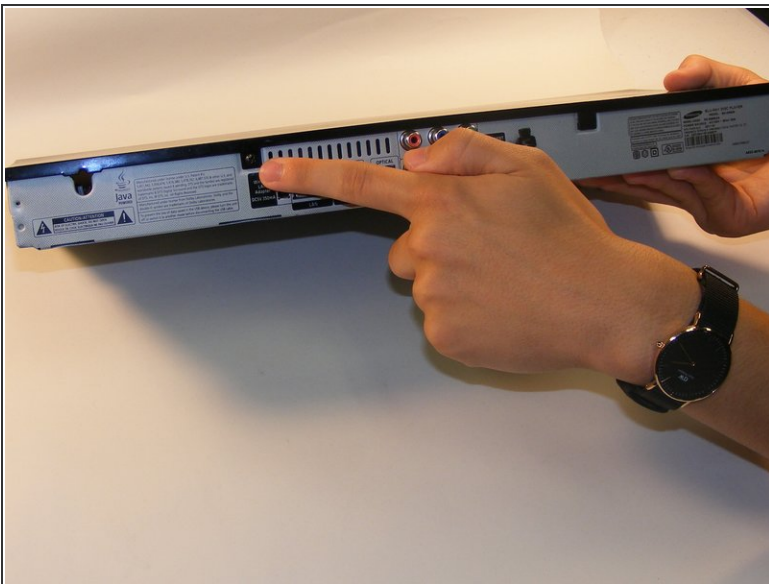
- [iFixit Opening Tool](#) (1)
 - [Spudger](#) (1)
 - [Phillips #2 Screwdriver](#) (1)
-

Step 1 — Samsung BD-D5500 Disassembly



- To begin, turn the device over so that the bottom is facing up. There are 9 black clips that attach the plastic body to the case. Remove these clips from the case.

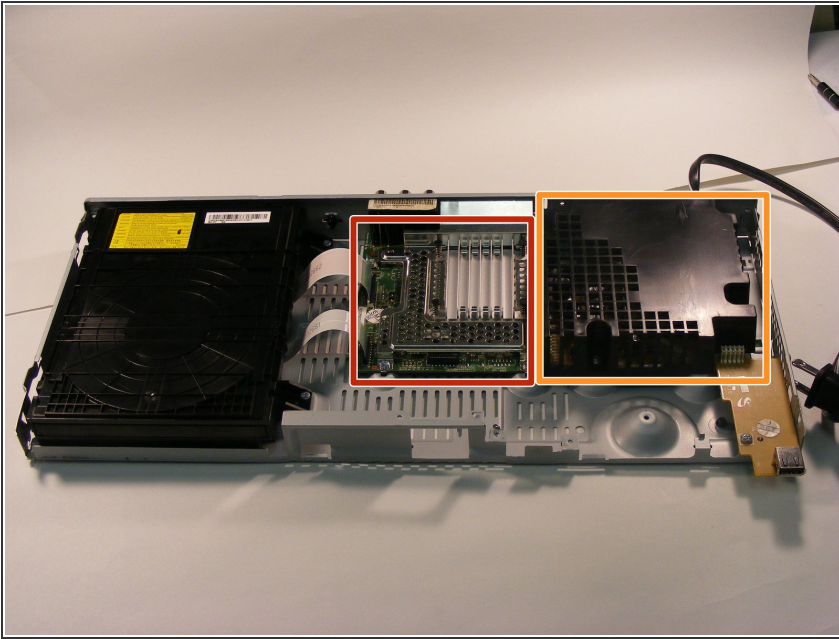
Step 2



- Use a Phillips #2 screwdriver to remove the screw that attaches the top cover to the rear of the device. This will allow you to remove the cover.

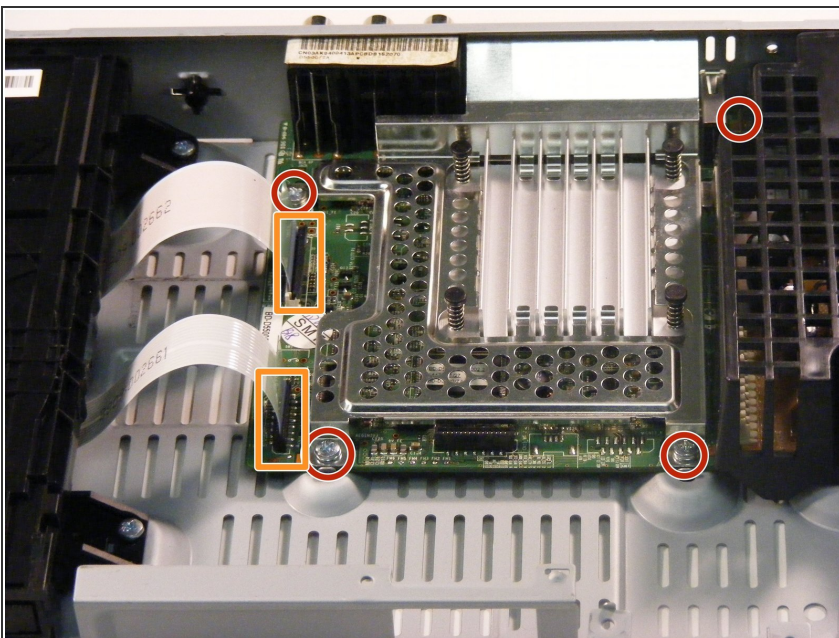
 This is how your device will look after you remove the top.

Step 3 — Motherboard



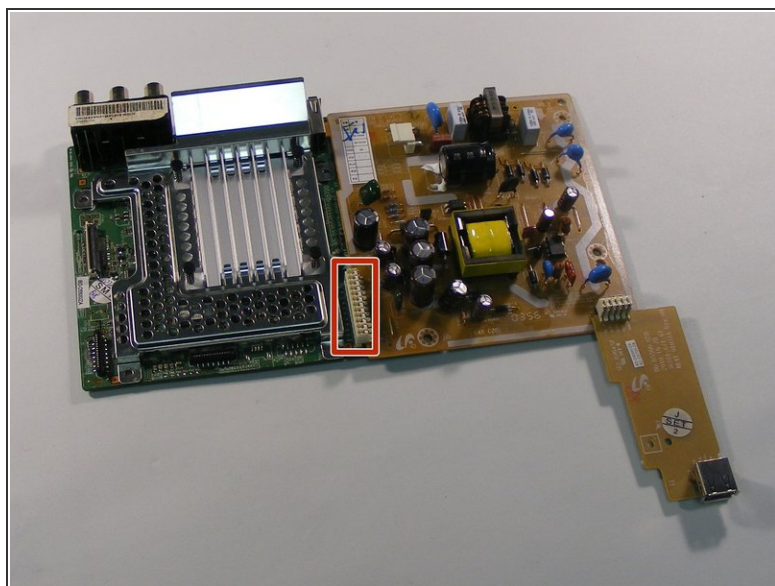
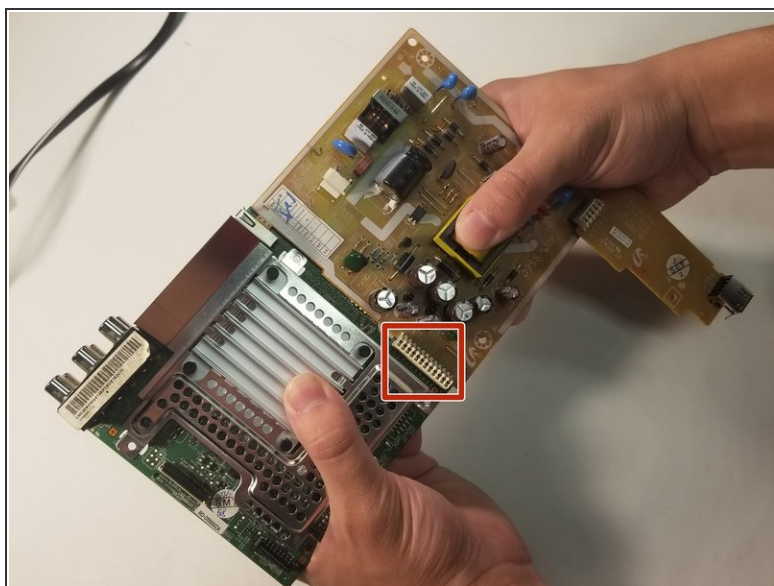
- Locate the motherboard within the red rectangle.
- Locate the power supply within the orange rectangle.

Step 4



- The screws securing the motherboard in are labeled with red circles and the wires are labeled with orange rectangles.
- Use your screwdriver with a PH2 sized head and unscrew these 1.2mm screws labeled with red circles.
- Detach the wires connected the motherboard from the disc drive that are labeled in orange.

Step 5



- Labeled with a red rectangle is the location where they are connected. Grab the motherboard in one hand and the power supply in the other, and pull the motherboard up and push the power supply down. The motherboard and power supply should then disconnect.

To reassemble your device, follow these instructions in reverse order.