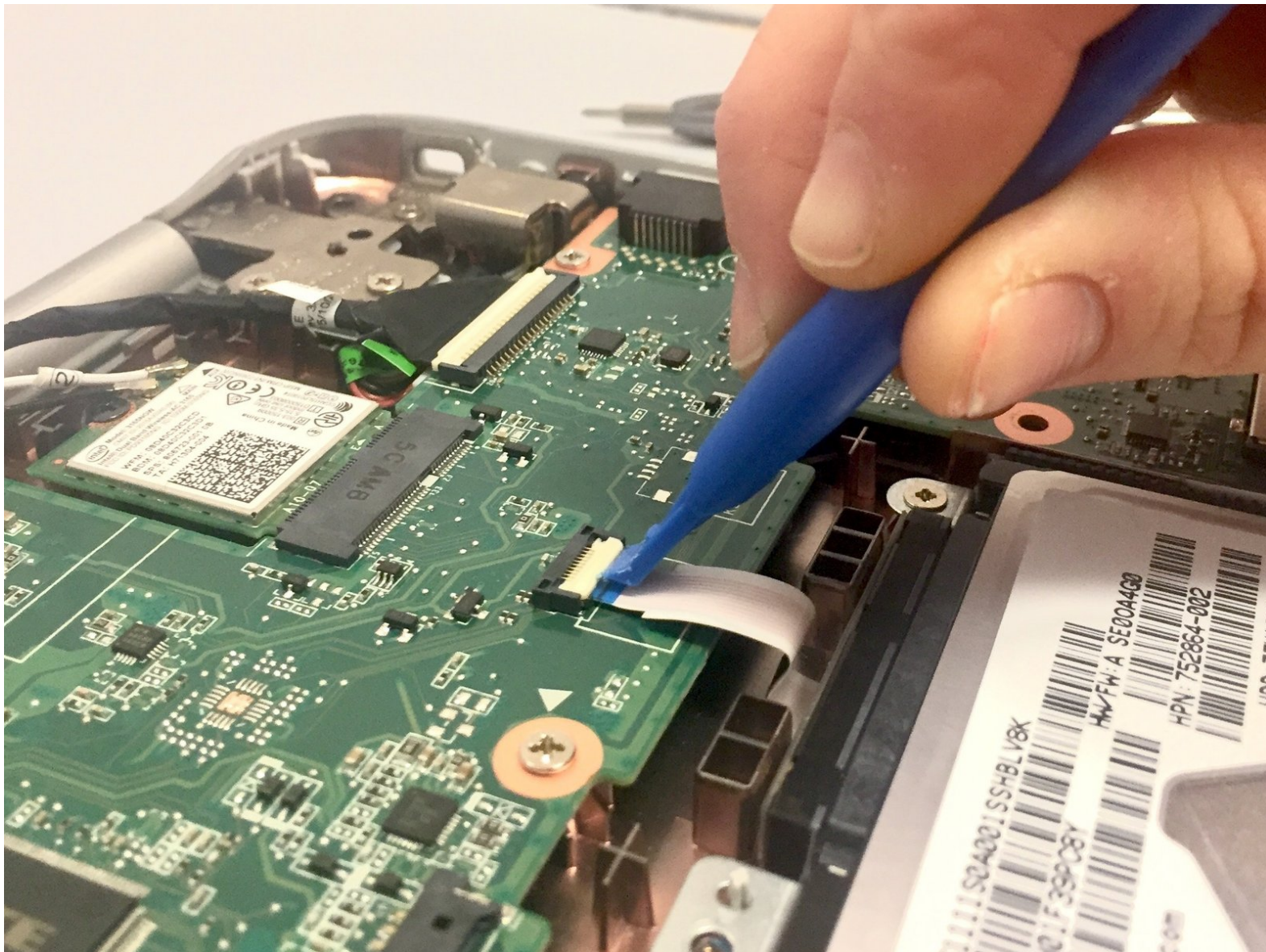




# HP Envy x360 15-u473cl Hard Drive Replacement

Replace your hard drive to add storage space or fix frequent "Blue Screen of Death" (BSOD) issues.

Written By: Maximillian McDonald



This document was generated on 2021-05-23 04:23:16 PM (MST).

# INTRODUCTION

The hard drive can wear out over time. This guide will show how to remove the hard drive inside the device.



## TOOLS:

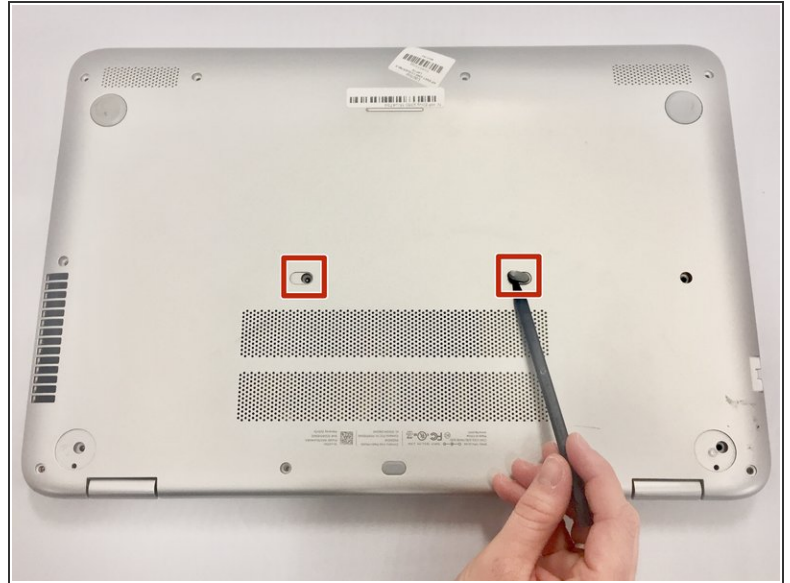
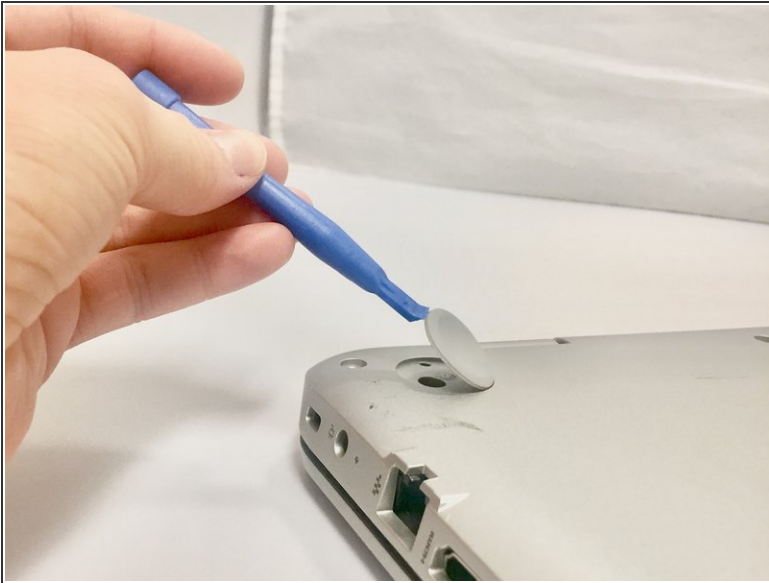
- [Spudger](#) (1)
- [iFixit Opening Tools](#) (1)
- [Phillips #0 Screwdriver](#) (1)
- [Phillips #00 Screwdriver](#) (1)



## PARTS:

- [1 TB SSD / Upgrade Bundle](#) (1)

## Step 1 — Battery



**i** Power off your laptop before beginning disassembly.

- Pry off the 2 rear rubber pads (closest to the laptop hinge) using the plastic opening tool to reveal two screws.
- Remove the 2 anti-tamper proof covers using the spudger to reveal two screws.

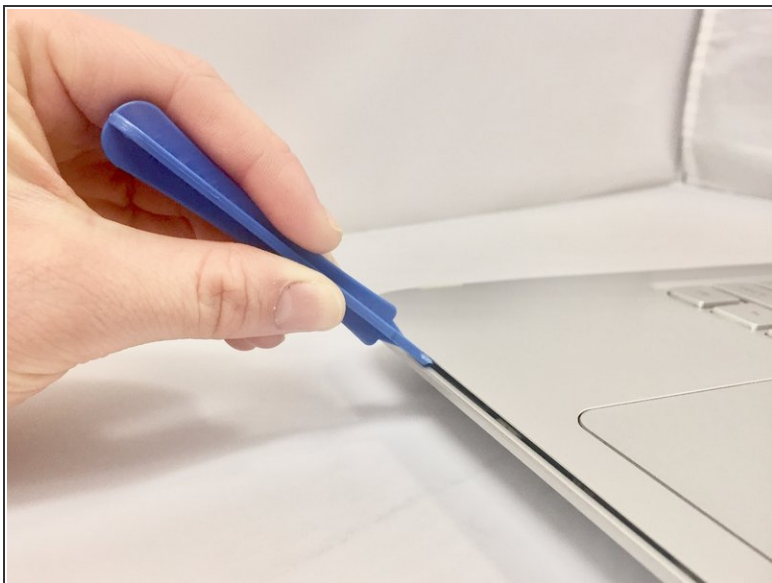
## Step 2



- Remove the fourteen 7mm screws using the Phillips #0 screwdriver from the bottom of the laptop.

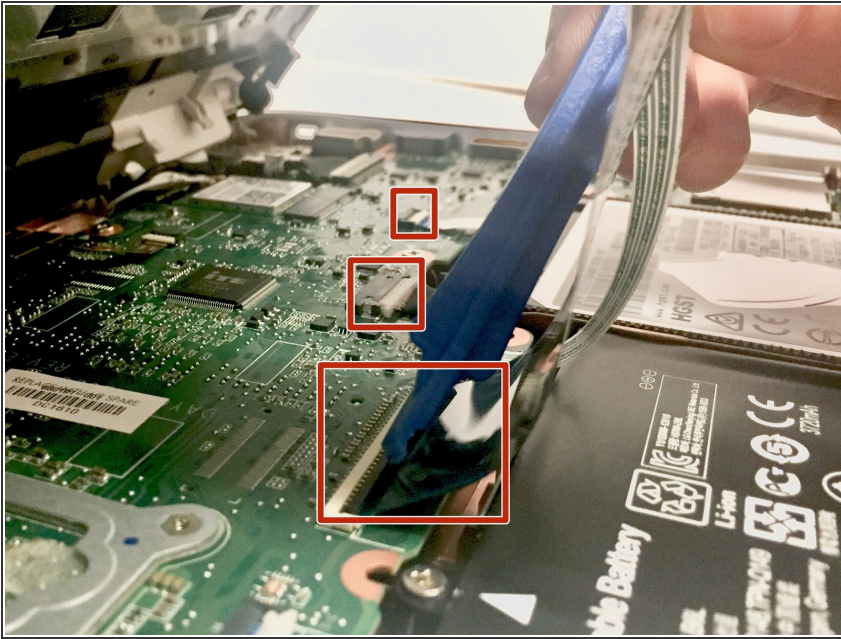


### Step 3



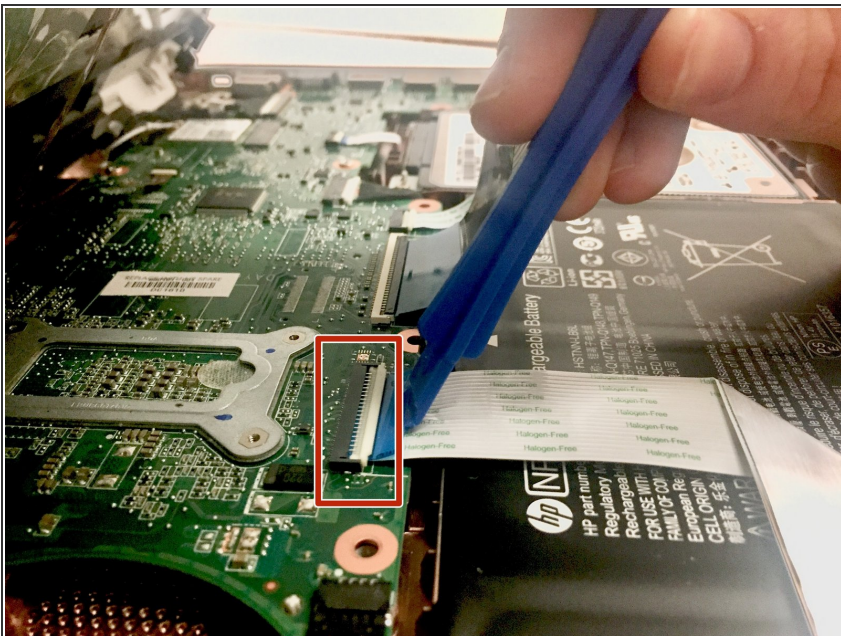
- Turn the device right side up and open the lid.
- Insert the plastic opening tool in between the keyboard plate and the base of laptop.
- Run the tool along seem, prying up as you go.
- Separate the keyboard plate from the base, lifting from the front.

## Step 4



- There are 3 ribbon cables (black, white, and copper color) connecting the computer to the keyboard plate. Disconnect the 3 ribbon cables using the plastic opening tool by prying up the latches holding each cable in place.
- Remove the keyboard plate from the device.

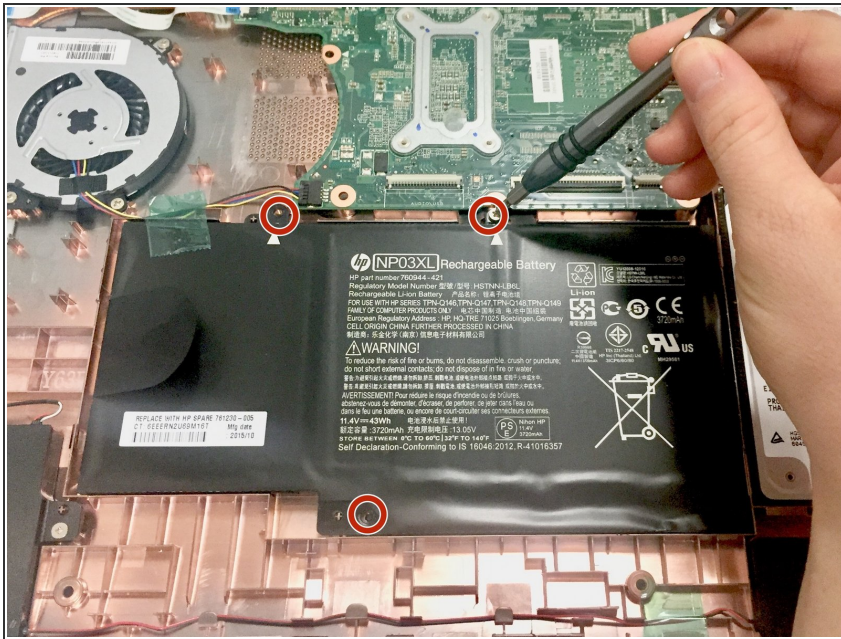
## Step 5



- Remove the thick white ribbon cable covering the battery using the plastic opening tool by prying up the latches attaching each end.

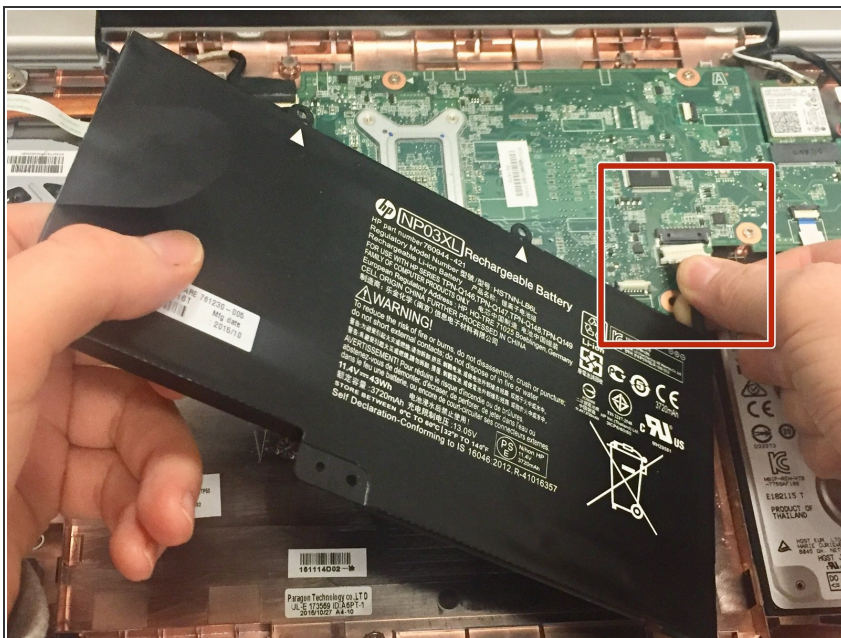


## Step 6



- Remove the three 4mm screws using the Phillips #0 screwdriver.

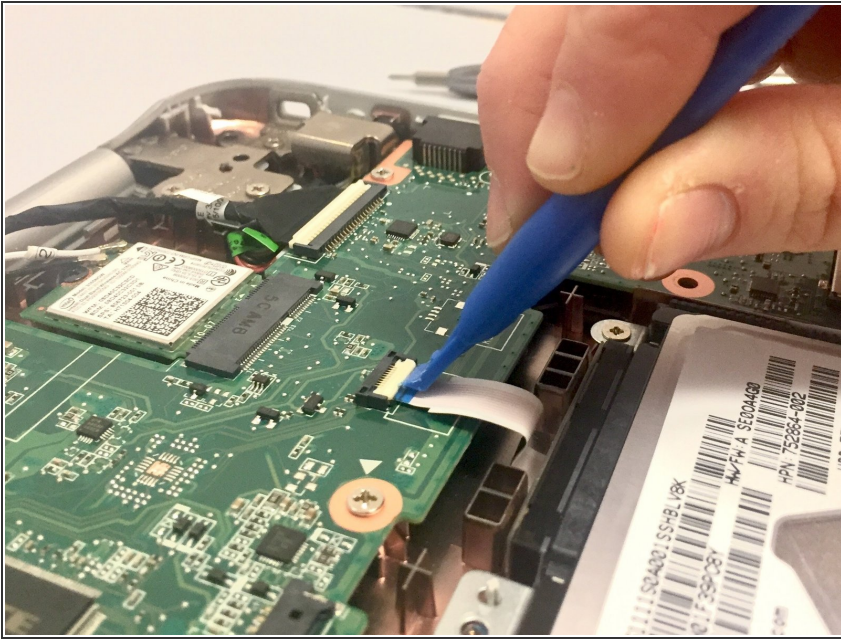
## Step 7



- Disconnect the battery from the motherboard.
- There may be tamper-proof tape holding the battery in place. Remove the tape if present.
- Remove the battery from the device.

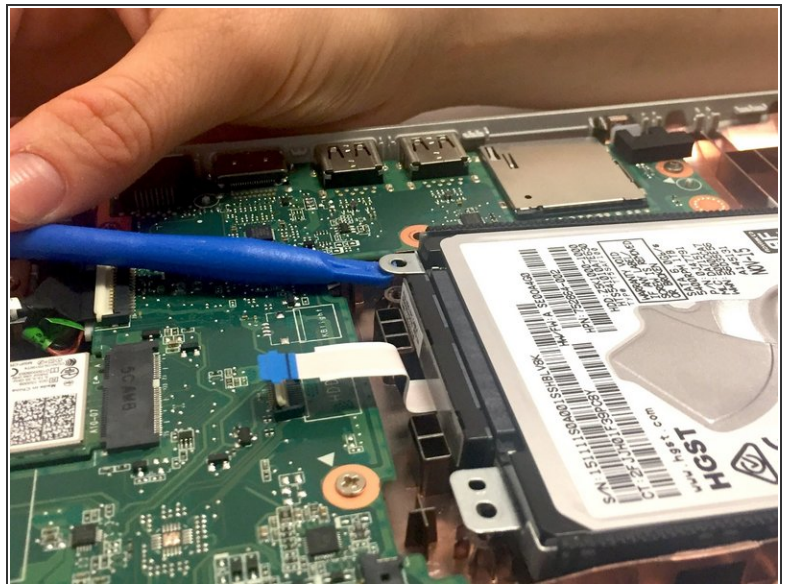
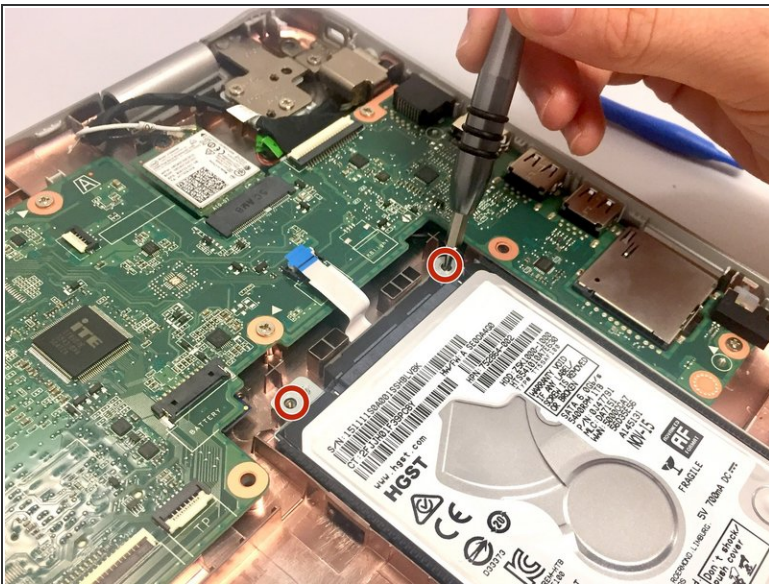


## Step 8 — Hard Drive



- On the back panel of the device, remove the four (4) M2.5xL6 screws at the top of the photo Phillips #0 screwdriver.
- Unscrew the three (3) screws at the bottom of the photo using a T5 Torx screwdriver.

## Step 9



- Remove the back cover by using the black spudger to lift up on the edges of the cover.
- Using a suction cup to assist in lifting the back cover.

## Step 10



- Use the Philips #0 screwdriver to remove six M2.x3.2 screws from the battery.

## Step 11



- Using the Philips #0 screwdriver, remove the final screw from the battery connected to the SSD storage unit.
- Lift and pull the front of the battery up and out (away from the connector) to remove.



## Step 12



- Lift and pull the front of the battery up and out (away from the connector) to remove.

## Step 13



- Using a Philips #0 screwdriver, remove the three M2x4 screws located around the cooling fan.



Be careful as the fan might be sharp in some places when removing it.

## Step 14



- Remove the connector clip with the tweezers.

## Step 15



- Remove the four spring loaded screws with a Philips #1 screwdriver.



## Step 16



- Remove the cooling fan.

To reassemble your device, follow these instructions in reverse order.