

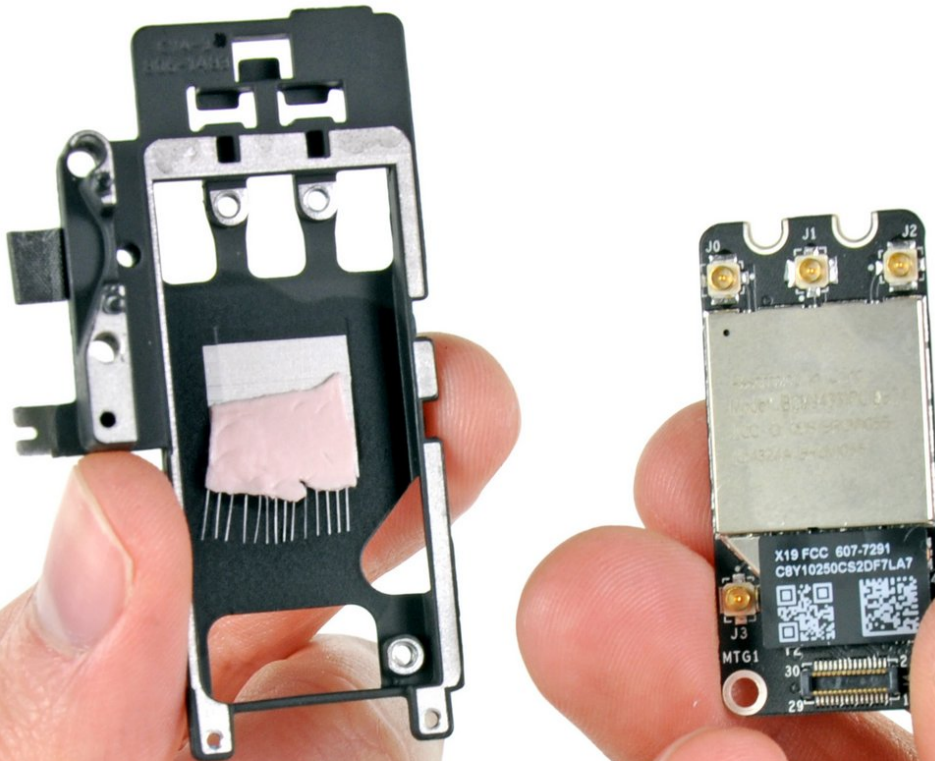


MacBook Pro 13" Unibody Mid 2012

AirPort/Bluetooth Board Replacement

Replace the AirPort and Bluetooth board on your Mid 2012 MacBook Pro 13" Unibody.

Written By: Andrew Optimus Goldheart



INTRODUCTION

Use this guide to replace a broken AirPort/Bluetooth board.



TOOLS:

- [Phillips #00 Screwdriver](#) (1)
- [Spudger](#) (1)



PARTS:

- [MacBook Pro Unibody \(Early 2011/Late 2011/Mid 2012\) Airport/Bluetooth Board](#) (1)
- [MacBook Pro 13" Unibody \(Model A1278 Early 2011 Late 2011 Mid 2012\) Airport Bluetooth Bracket](#) (1)
- [MacBook Pro 13" Unibody \(Early 2011/Late 2011/Mid 2012\) Airport/Bluetooth Cable](#) (1)

Step 1 — Lower Case



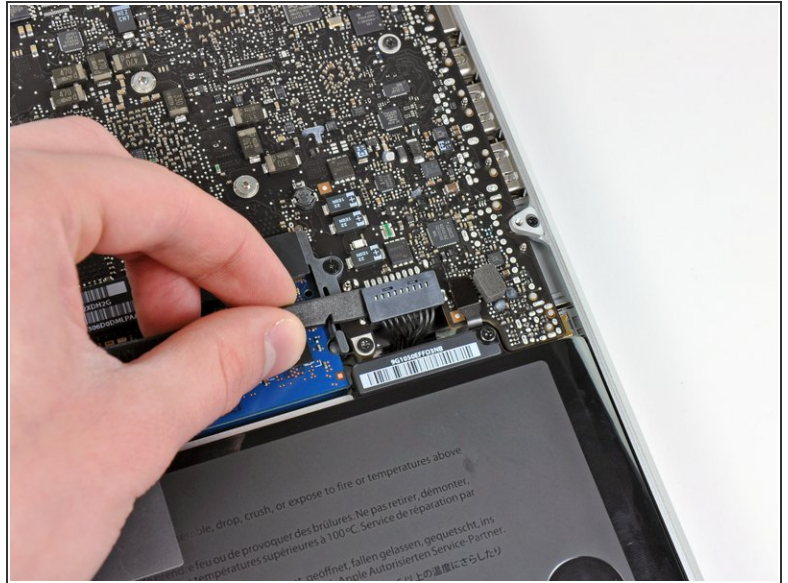
- Remove the following ten screws:
 - Three 14.4 mm Phillips #00 screws
 - Three 3.5 mm Phillips #00 screws
 - Four 3.5 mm shouldered Phillips #00 screws
- ⓘ When replacing the small screws, align them perpendicular to the slight curvature of the case (they don't go straight down).

Step 2



- Use your fingers to pry the lower case away from the body of the MacBook near the vent.
- Remove the lower case.

Step 3 — Battery Connection



- Use the edge of a spudger to pry the battery connector upwards from its socket on the logic board.
- ❗ It is useful to pry upward on both short sides of the connector to "walk" it out of its socket. Be careful with the corners of the connectors, they can be easily broken off.

Step 4



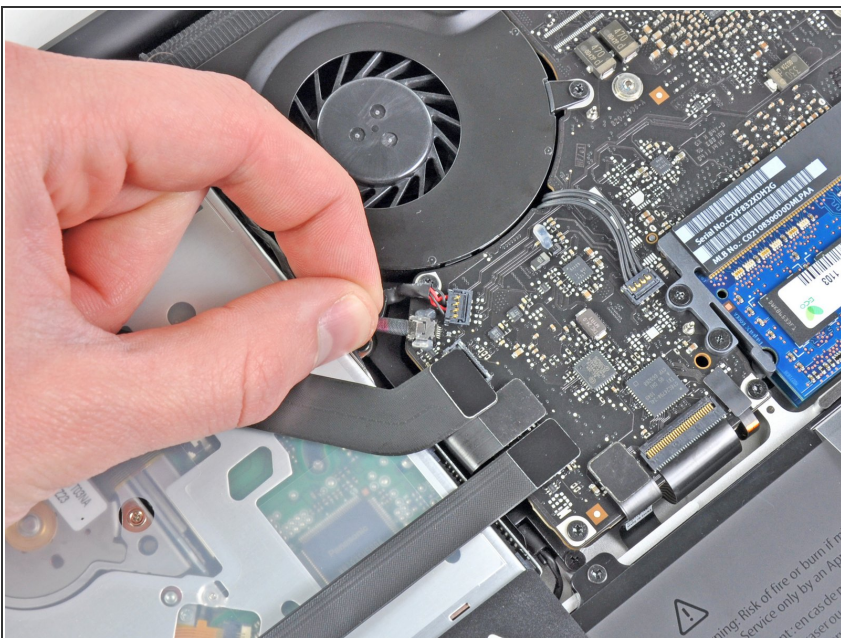
- Bend the battery cable slightly away from its socket on the logic board so it does not accidentally connect itself while you work.

Step 5 — AirPort/Bluetooth Assembly



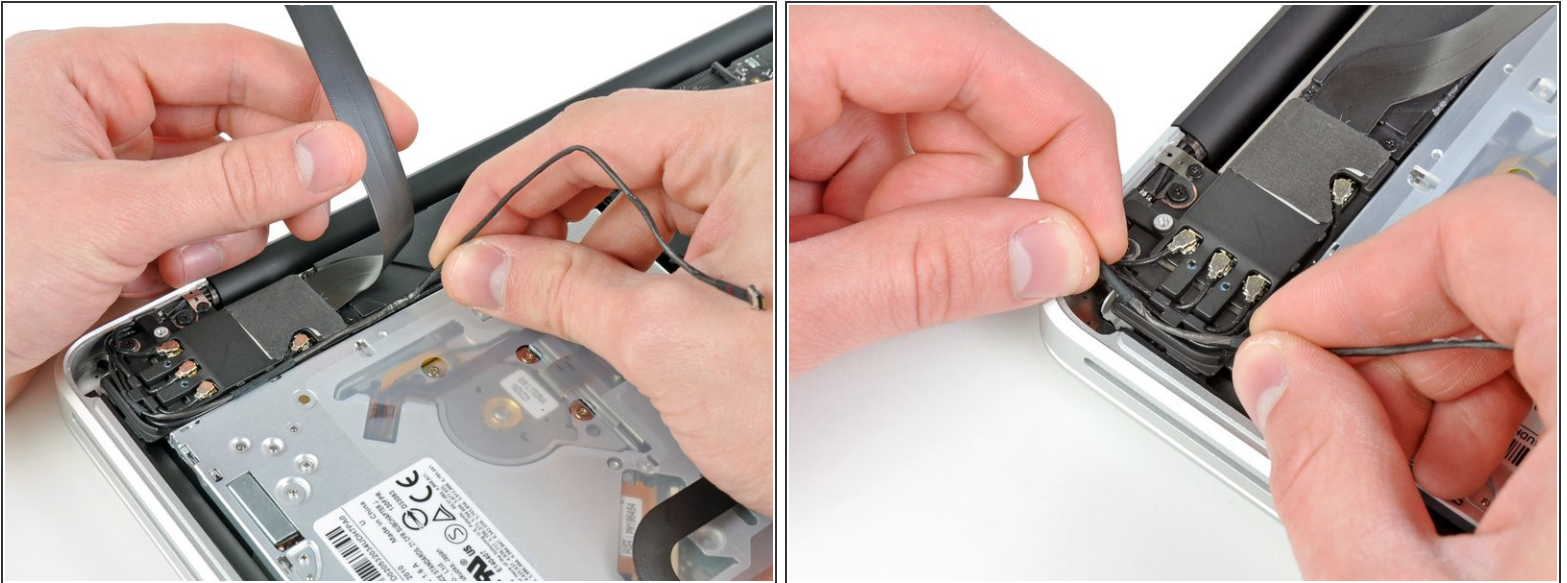
- Use the flat end of a spudger to pry the AirPort/Bluetooth ribbon cable connector up from its socket on the logic board.

Step 6



- Carefully pull the camera cable out of its socket on the logic board.
- ⚠ Pull the cable parallel to the face of the logic board. Pulling it upward may damage the logic board or the cable itself.

Step 7



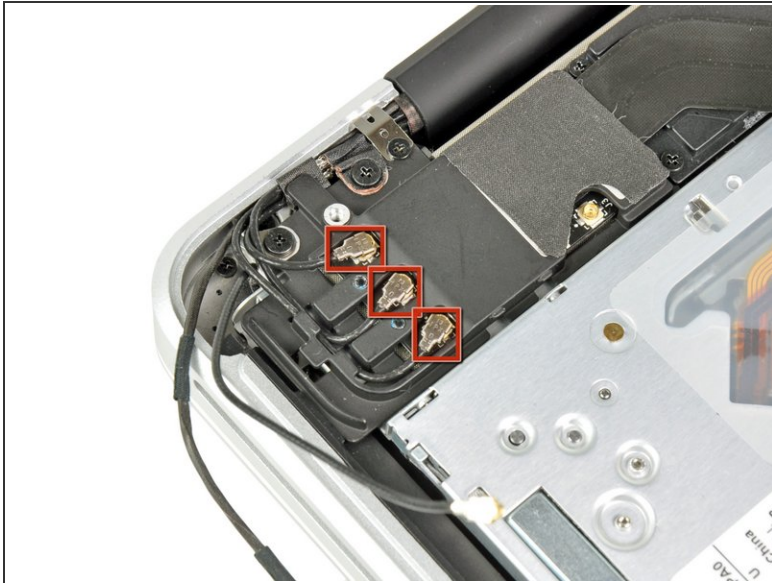
- Carefully move the AirPort/Bluetooth ribbon cable out of the way as you peel the camera cable off the adhesive securing it to the subwoofer and the AirPort/Bluetooth bracket.
- De-route the camera cable out from under the retaining finger molded into the AirPort/Bluetooth bracket.

Step 8



- Use the tip of a spudger to pry the antenna connector closest to the logic board up from its socket on the AirPort/Bluetooth board.
- De-route the antenna cable from under the finger molded into the AirPort/Bluetooth bracket.

Step 9



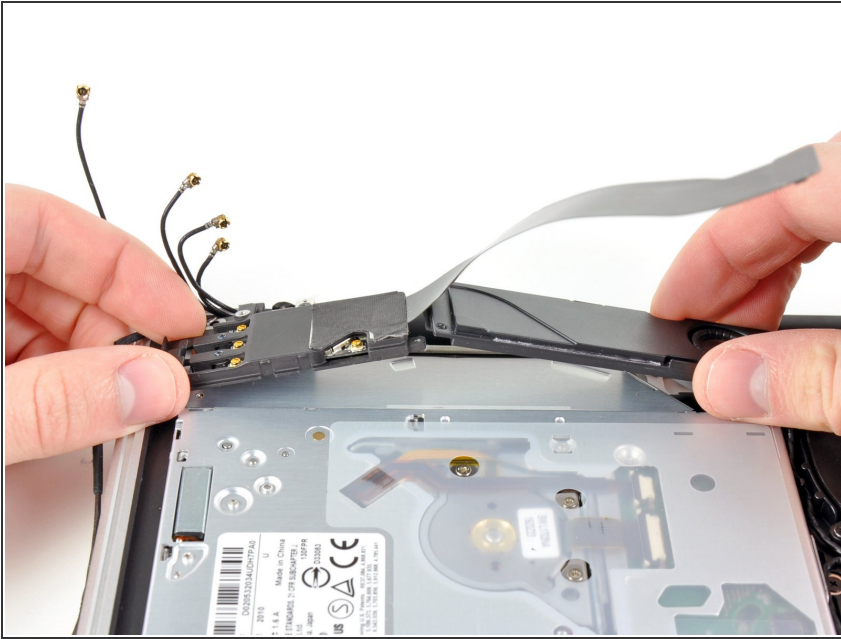
- Using the method described in the last step, disconnect the remaining three antenna connectors.
- De-route their cables from the slots cut in the AirPort/Bluetooth bracket.

Step 10



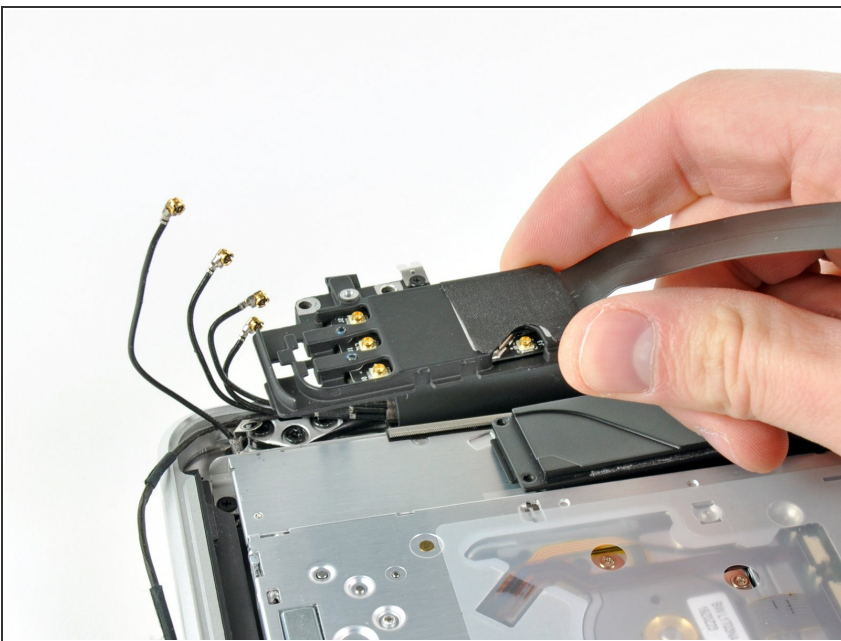
- Remove the following five screws:
 - Two 10.3 mm Phillips screws
 - Two 3.1 mm Phillips screws
 - One 5 mm Phillips screw

Step 11



- Pull the AirPort/Bluetooth assembly and the Subwoofer upward near the center of the side of the optical drive until they clear each other.

Step 12



- Remove the AirPort/Bluetooth assembly, minding the fragile antenna contact near the corner of the upper case.

Step 13 — AirPort/Bluetooth Board



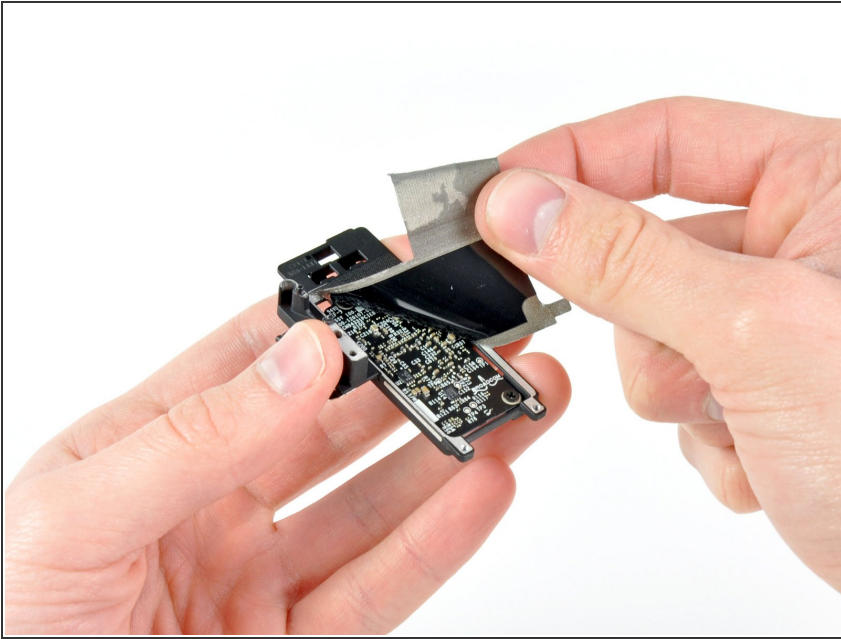
- Peel back the piece of EMI tape covering the AirPort/Bluetooth cable connector.

Step 14



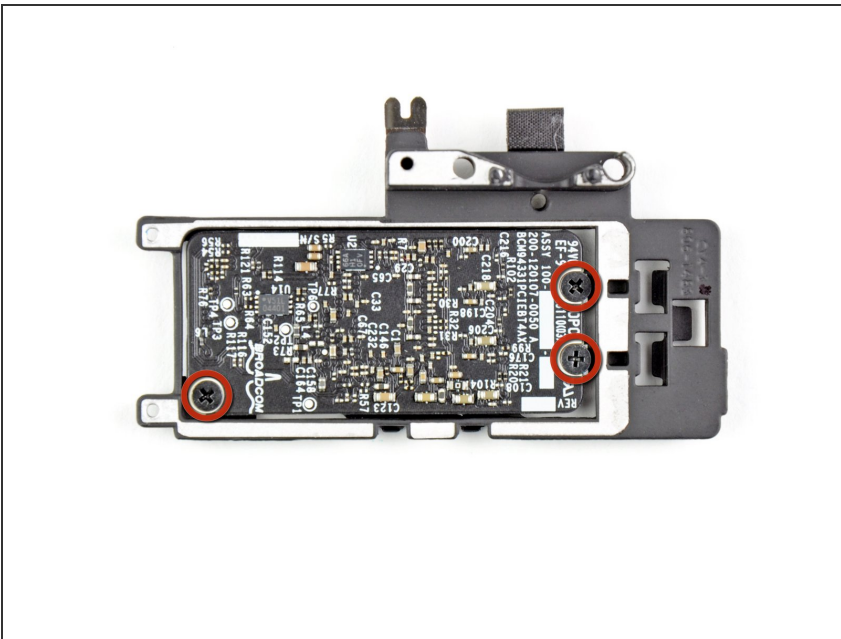
- Use the tip of a spudger to lift the AirPort/Bluetooth cable connector out of its socket on the AirPort/Bluetooth board.
- Remove the AirPort/Bluetooth cable.

Step 15



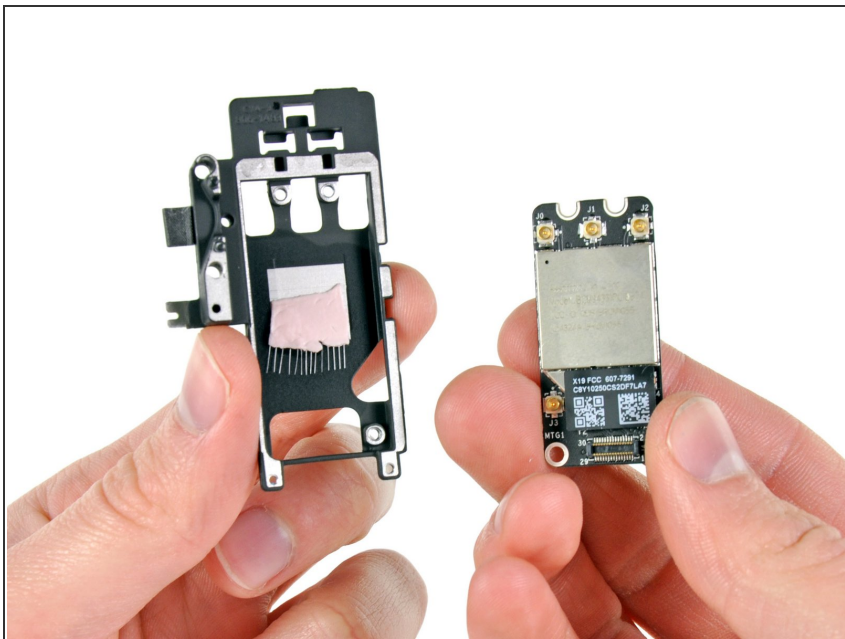
- Continue peeling the EMI tape off the bottom of the AirPort/Bluetooth bracket and remove it from the assembly.

Step 16



- Remove the three 3 mm Phillips screws securing the AirPort/Bluetooth board to its bracket.

Step 17



- Remove the AirPort/Bluetooth board from its bracket.
- ⓘ Be careful not to damage the pink thermal pad attached to the bracket.

To reassemble your device, follow these instructions in reverse order.