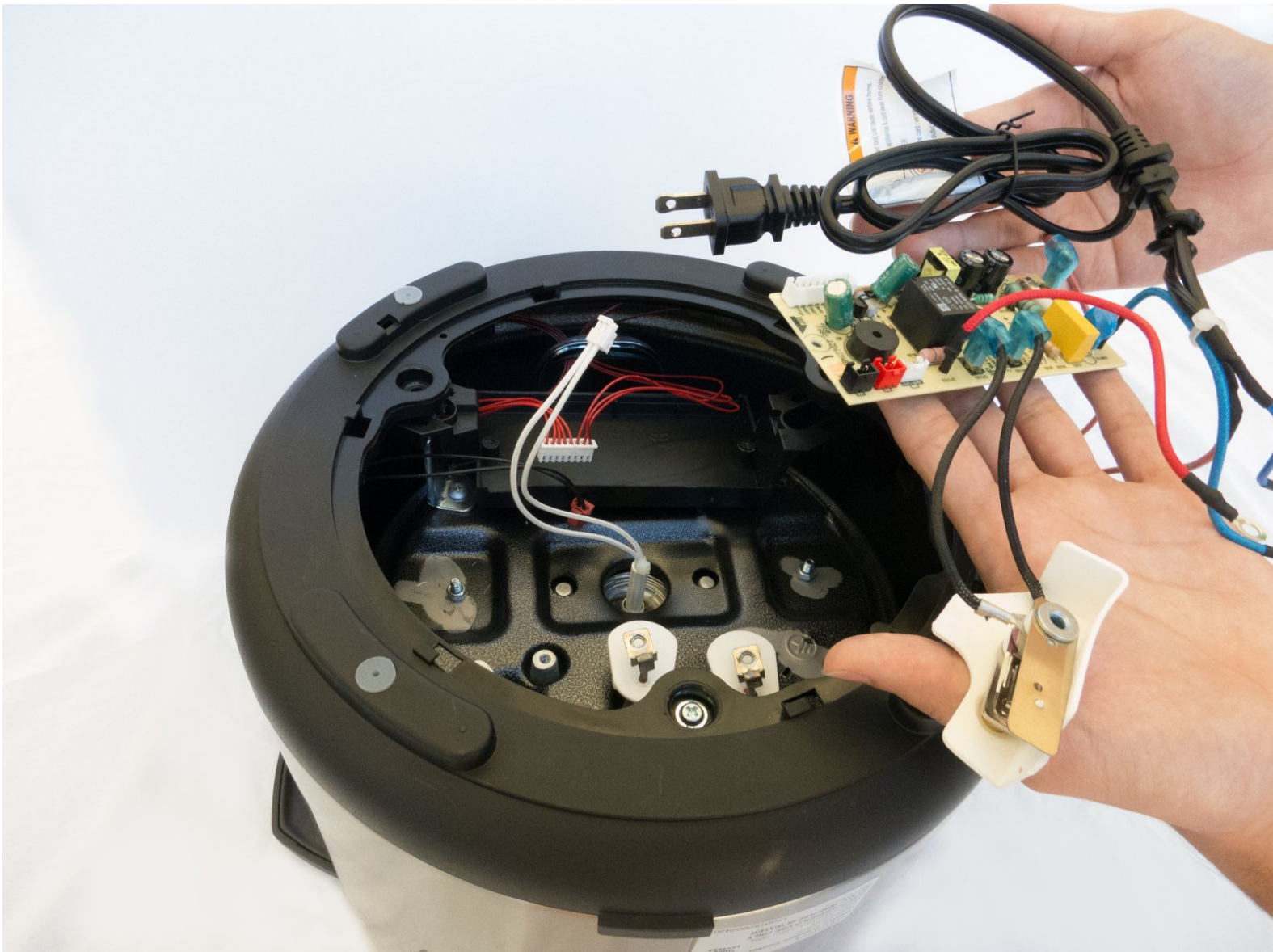




Insignia 6-Quart Pressure Cooker Circuit Board Replacement

How to remove the circuit board and power cord.

Written By: Savannah Webb



INTRODUCTION

Circuit boards may require replacement after consistent use. This guide will show how to remove the circuit board.



TOOLS:

- [Phillips #2 Screwdriver](#) (1)
 - [JIS #1](#) (1)
-

Step 1 — Circuit Board and Power Cord



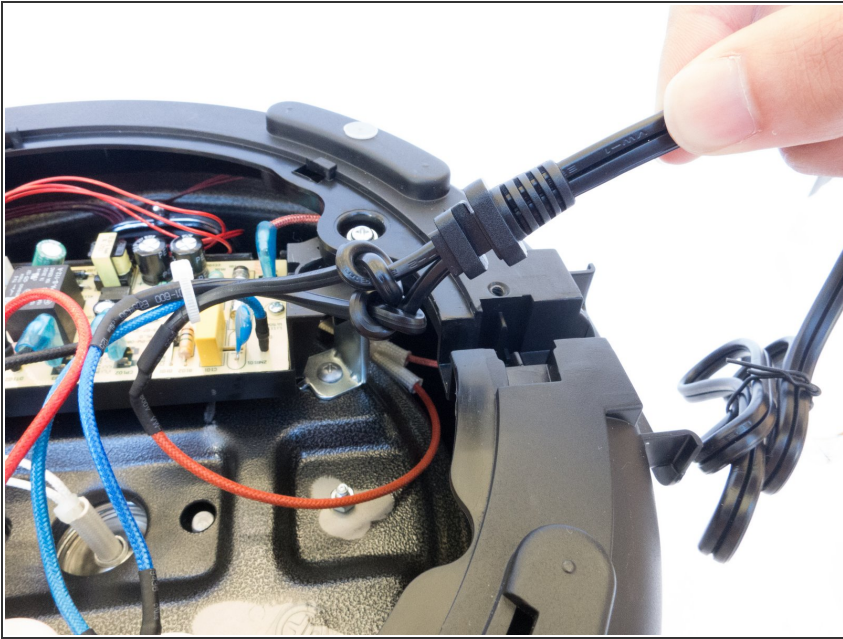
- Use a Phillips head #2 screwdriver to remove the 6mm screw.

Step 2



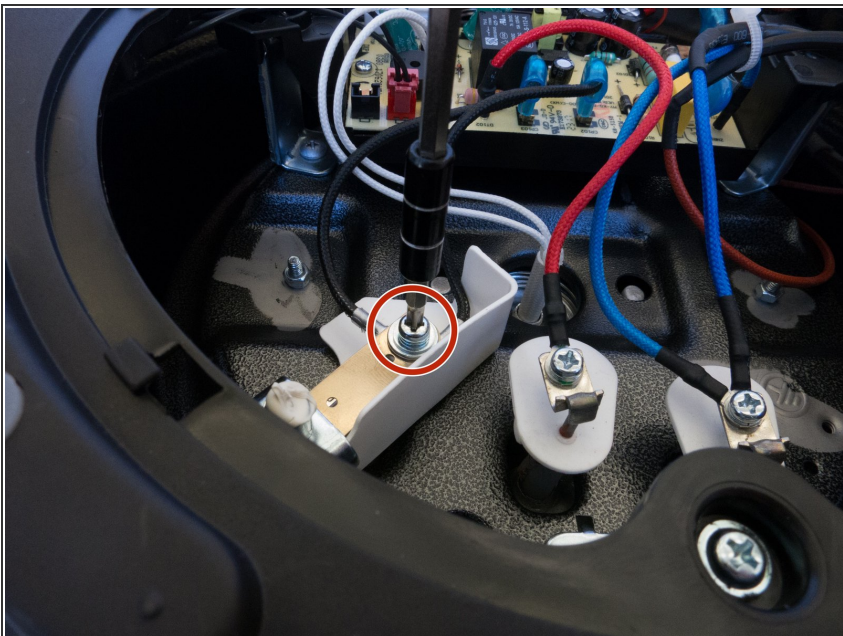
- Twist the light grey plastic until the holes align with the blockers.
- Remove the light grey plastic cover.

Step 3



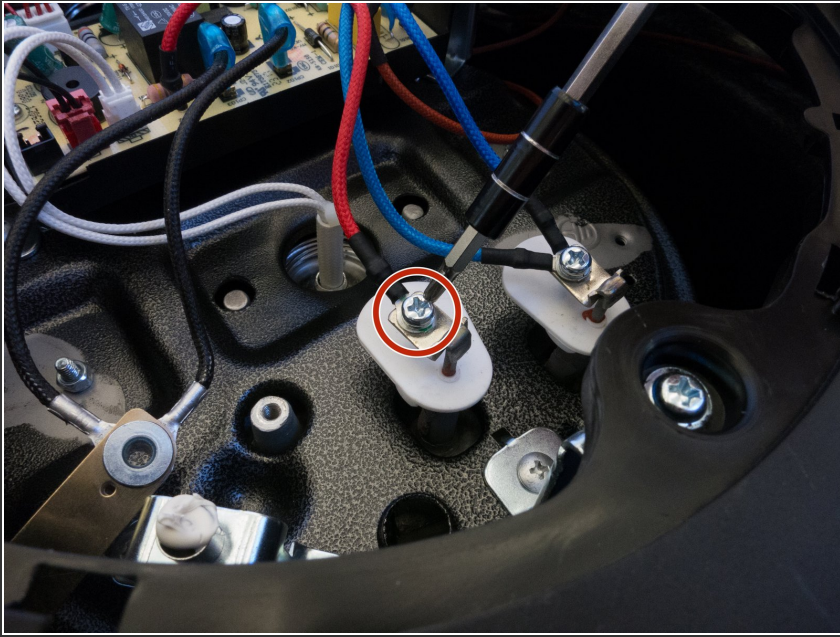
- Remove the power cord from the slot it is inserted in.

Step 4



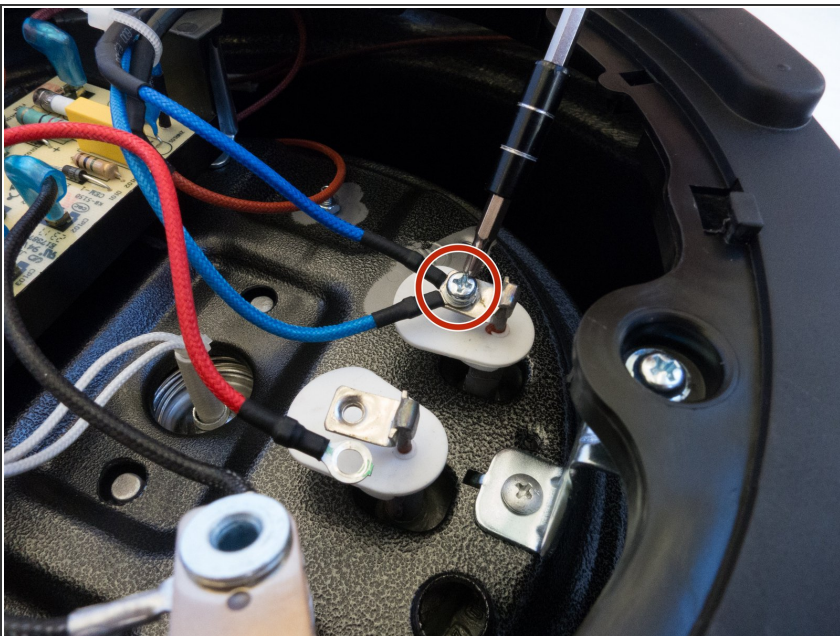
- Use a Phillips head #2 screwdriver to remove the 22mm screw connected to the black wire.

Step 5



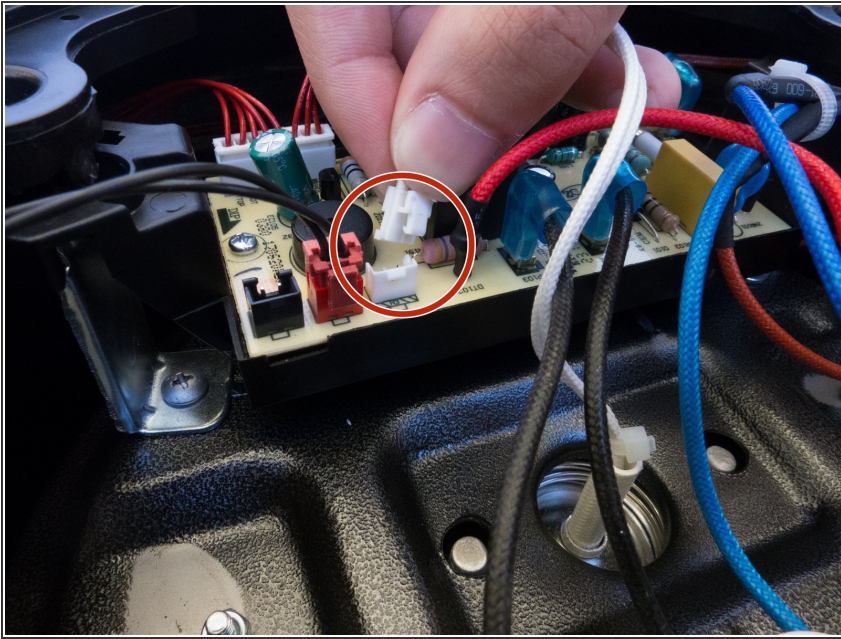
- Use a Phillips head #2 screwdriver to remove the 8mm screw and it's washer from the red wire.

Step 6



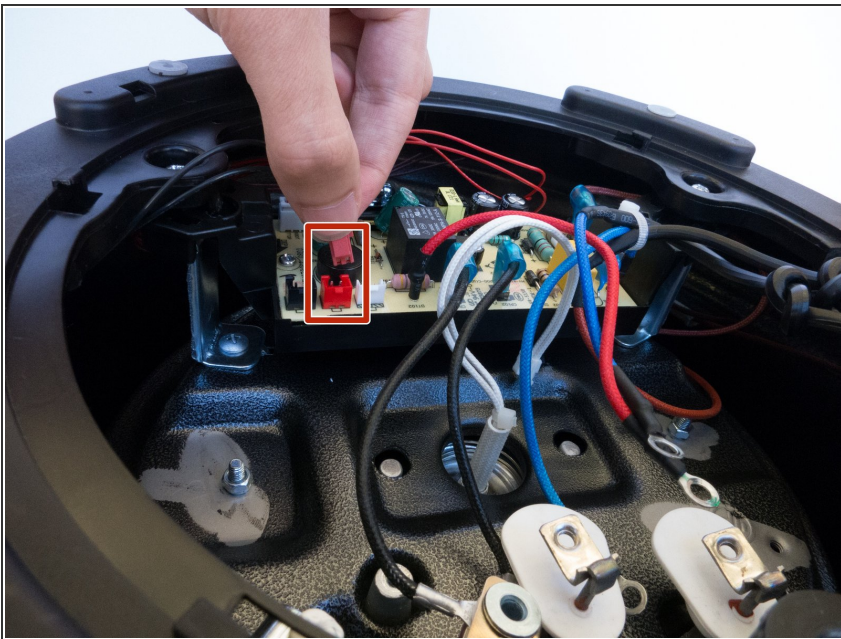
- Use a Phillips head #2 screwdriver to remove the 8mm screw and it's washer from the blue wire.

Step 7



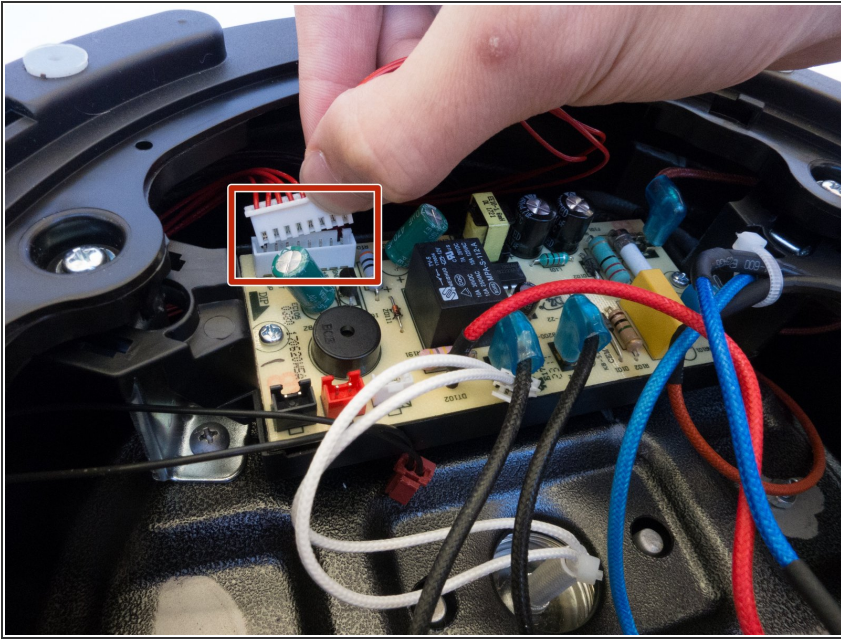
- Pinch the small white component connected to the circuit board.
- Once pinched, wiggle this component until it is disconnected.

Step 8



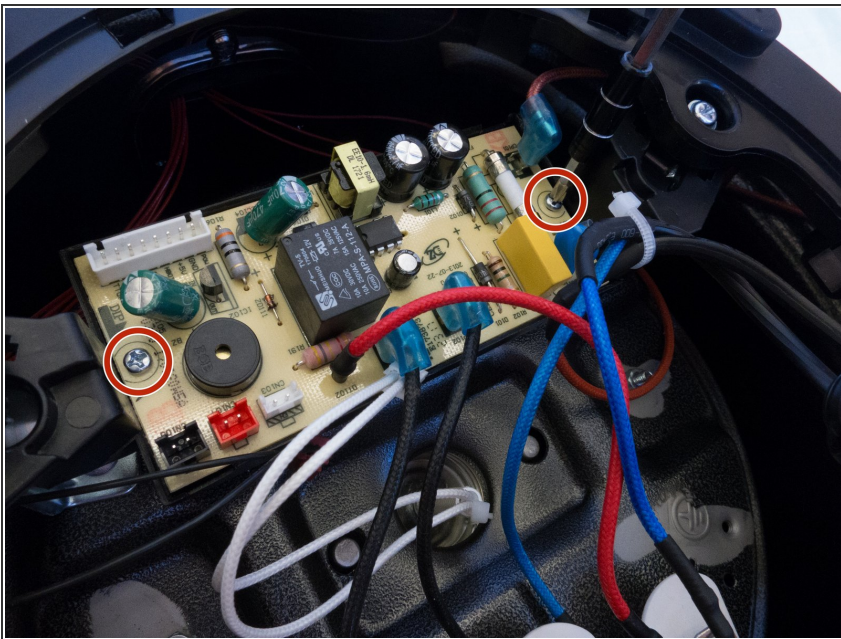
- Pinch the red component connected to the circuit board.
- Once pinched, wiggle this component until it is disconnected.

Step 9



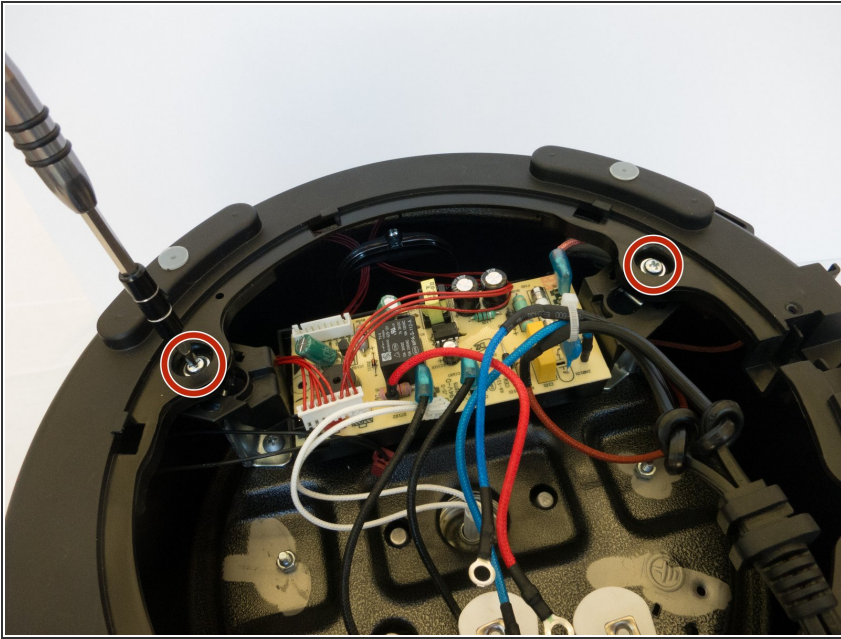
- Wiggle the wide white component until it is removed from the circuit board.

Step 10



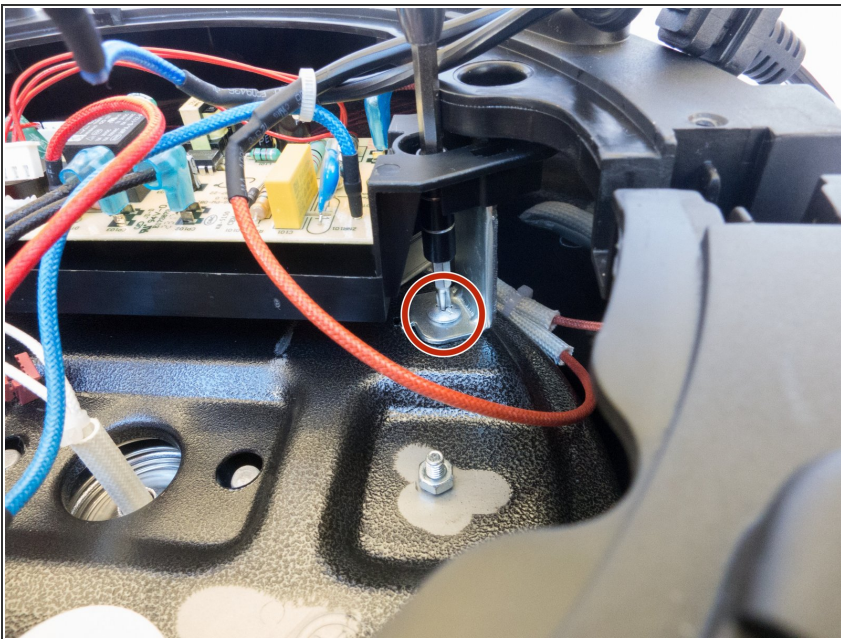
- Use a J1 head screwdriver to remove the 8mm screws from both sides of the circuit board.

Step 11



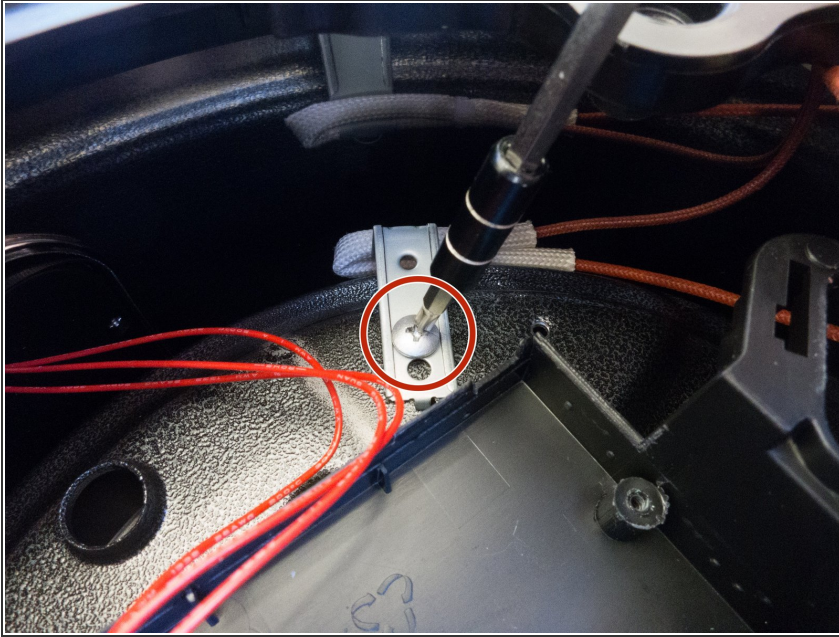
- Use a Phillips head #2 screwdriver to remove both 15mm screws from either side of the circuit board, indicated in the picture.

Step 12



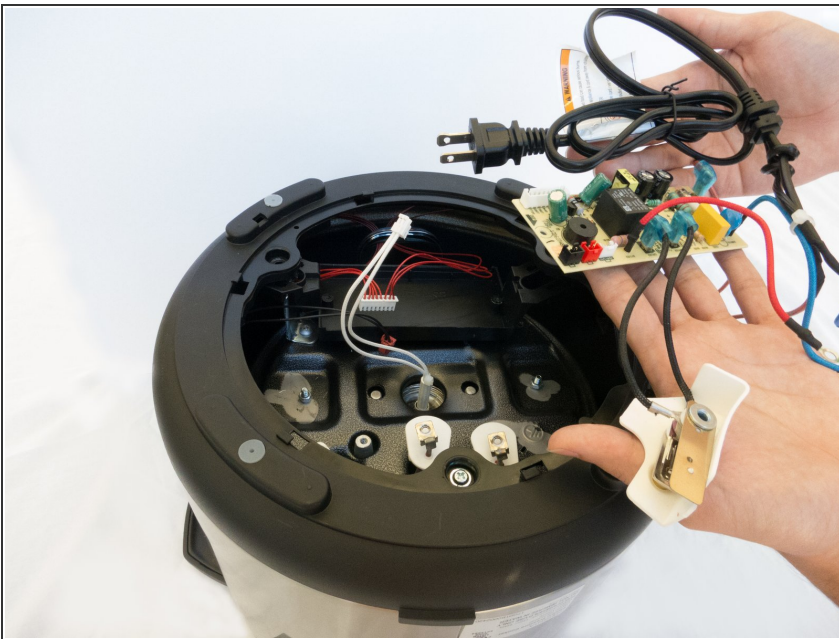
- Position the pressure cooker so that the circuit board is farther from you than the black, red, and blue wire connections.
- To the right of the board, use a Phillips head #2 screwdriver to remove the 6mm screw.

Step 13



- Use a Phillips head #2 screwdriver to remove the 6mm screw behind and to the right of the circuit board tray.

Step 14



- Remove and replace the circuit board.

To reassemble your device, follow these instructions in reverse order.