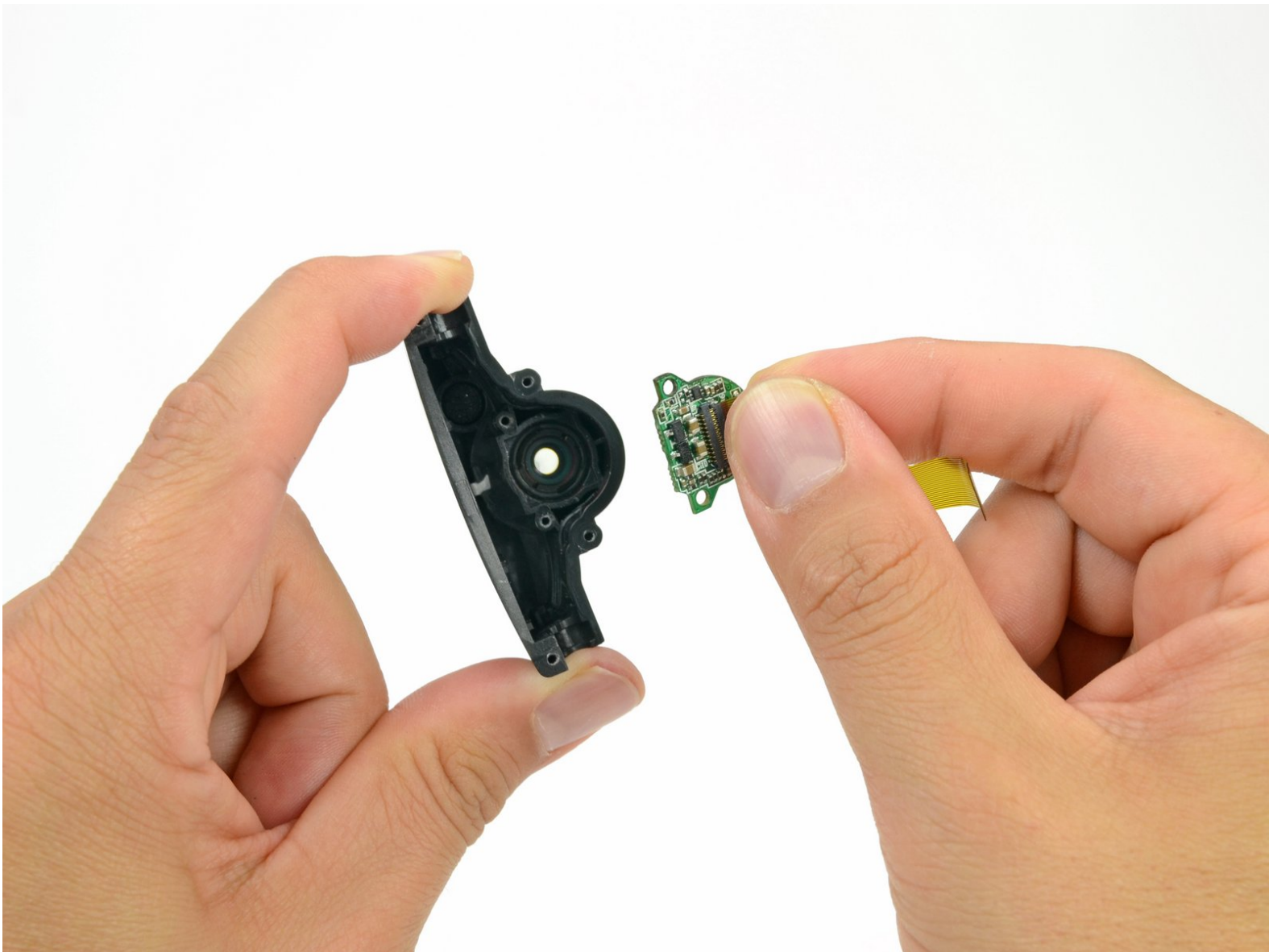




Zeal Optics iON Camera Sensor Replacement

Zeal Optics iON camera sensor replacement.

Written By: David Hodson



INTRODUCTION

Is a smattering of dead pixels totally harshing your videos' mellow? Replace that bad image sensor with a new one and get all of your resolution back.

TOOLS:

- [Phillips #00 Screwdriver](#) (1)
 - [Spudger](#) (1)
-

Step 1 — Lens



- i** In the next few steps, you will be releasing the clips that hold the lens in place. Do not try to completely remove the lens until all the clips have been released.
- Hold the iON in your hands with your thumbs on the clips next to the middle of the lens.
 - Pull the rubber housing apart to release the first two clips.

Step 2



- Grab the inside of the plastic nose rest with your thumb and index finger.
- Rotate the nose rest upwards until you feel that it is free from the lens.

Step 3



✦ Rotate the device 180 degrees.

- Grab the top of the goggle frame that holds the camera assembly.
- Rotate the frame outwards until you feel that the clips inside it are free.

Step 4



- While firmly holding the goggles with the palm of one hand, grab the top right corner of the frame and rotate it away from the lens.

Step 5



- i** The lens should now be barely attached to the frame. If it still feels firmly attached, repeat any necessary steps to free the clips.
- While holding the goggles in one hand, use the other to grab the lens from opposite ends, and rotate it out of the housing and away from any remaining clips.

Step 6 — Camera Assembly



- Remove the four 7.1 mm Phillips screws securing the camera housing to the goggle frame.

Step 7



- Peel back the rubber battery cover from the inner left side of the frame.
- While firmly holding the battery cover, pull the bottom of the strap mount cover up and off of the frame

Step 8




- Once the bottom is free, continue pulling to free the top of the strap mount cover from the frame.

Step 9



- Pull the battery out of its recess in the frame.

 The battery is connected to the entire camera assembly and cannot be completely removed by itself.

Step 10



- Peel the rubber keypad cover up from the inner right side of the frame.
- While firmly holding the keypad cover, pull the top of the strap mount cover up and off of the frame

Step 11



- Once the bottom is free, continue pulling to free the bottom of the strap mount cover from the frame.

Step 12




- Hold the strap mount cover away from the frame and remove the keypad.

Step 13



- Grab the viewfinder housing and pull it out of its recess.

 Just like the battery, the viewfinder housing is connected to the rest of the camera assembly and cannot be removed by itself.

Step 14



- Place one of your hands near the center of the frame with your thumb next to the camera housing.
- With your other hand, grab the camera housing and pull it up and out of the frame.

Step 15



- Remove the viewfinder assembly by pulling it through the opening in the top of the frame.

Step 16



- In the same manner described above, remove the battery from the frame.

Step 17 — Motherboard Assembly



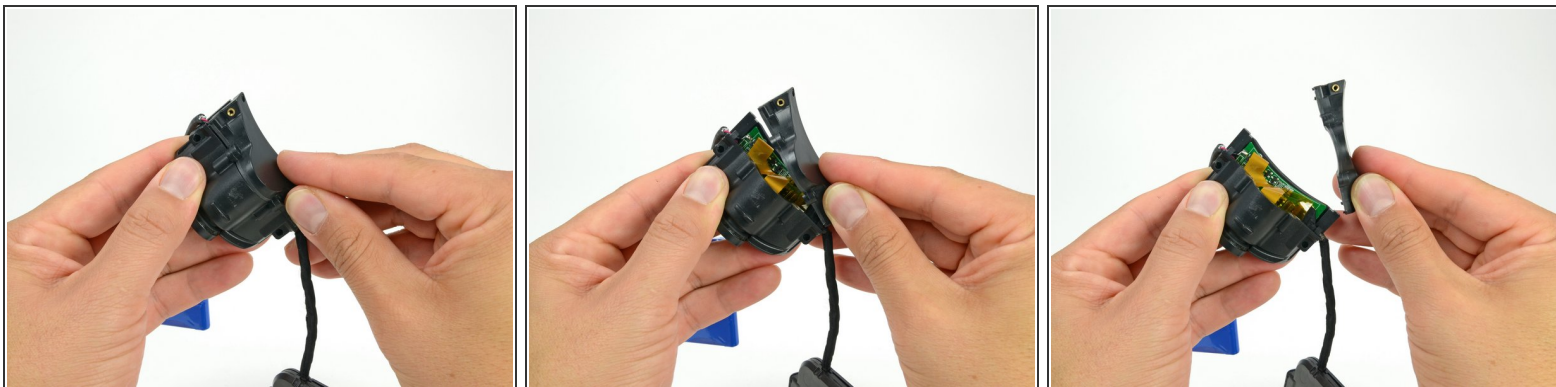
- Remove the following four screws securing the back cover of the camera housing:
 - two silver 8.5 mm screws,
 - two black 8.8 mm screws.

Step 18



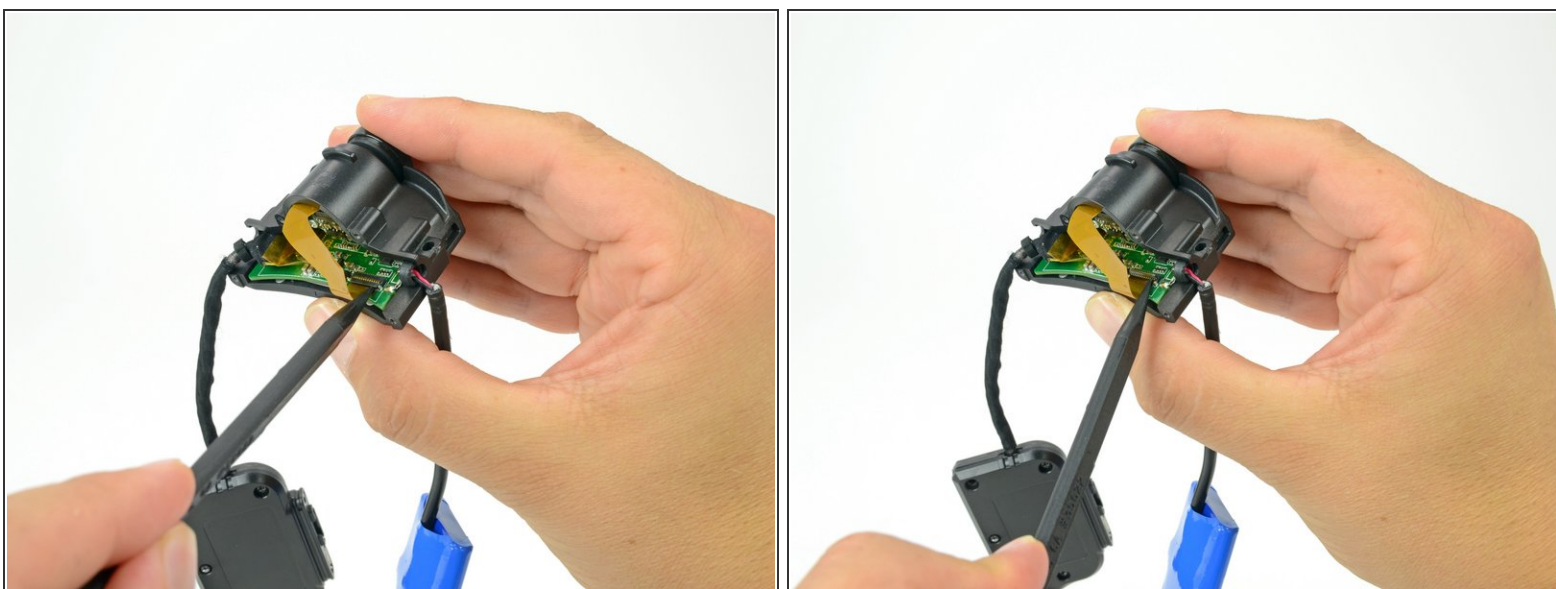
- Peel the white sticker off the bottom of the camera housing.

Step 19



- Lift the back cover off the camera housing and remove it.

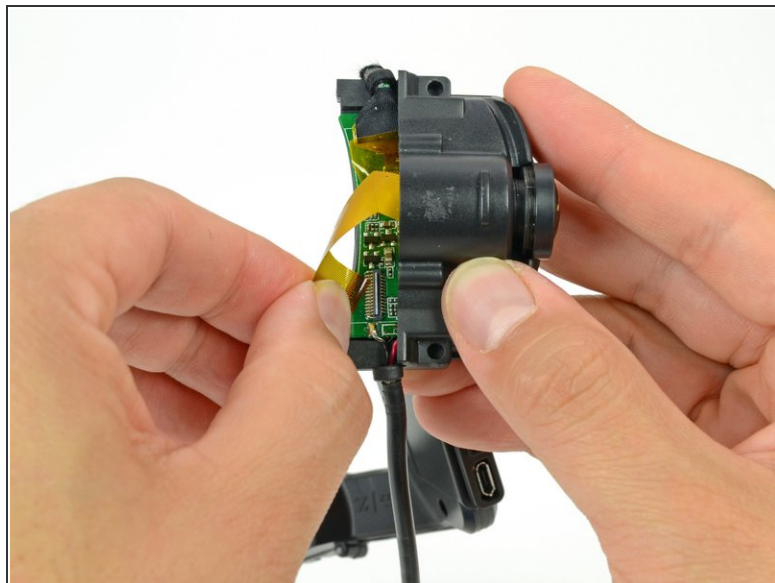
Step 20



- Use the tip of a spudger to pry up the retaining flap of the camera sensor cable ZIF connector on the motherboard.

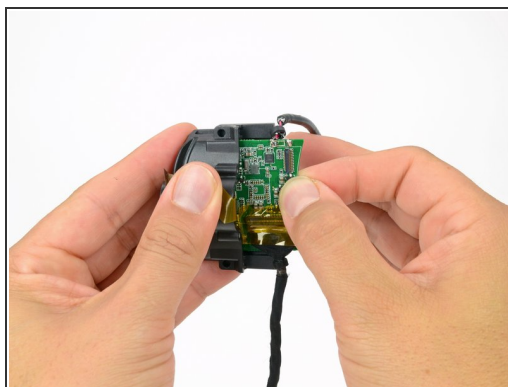
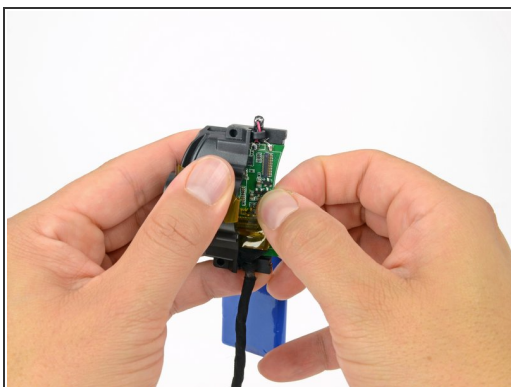
⚠ Be sure that you are prying up on the hinged flap, **not** the connector itself.

Step 21



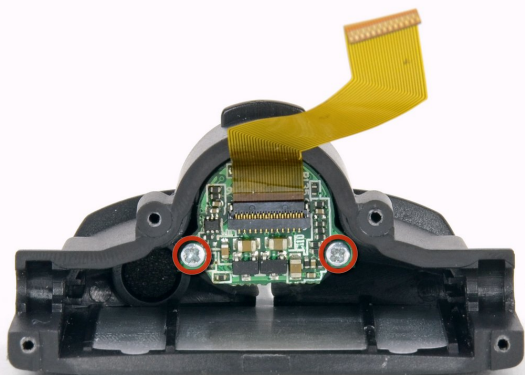
- Pull the camera sensor ribbon cable straight out of its connector on the motherboard.

Step 22



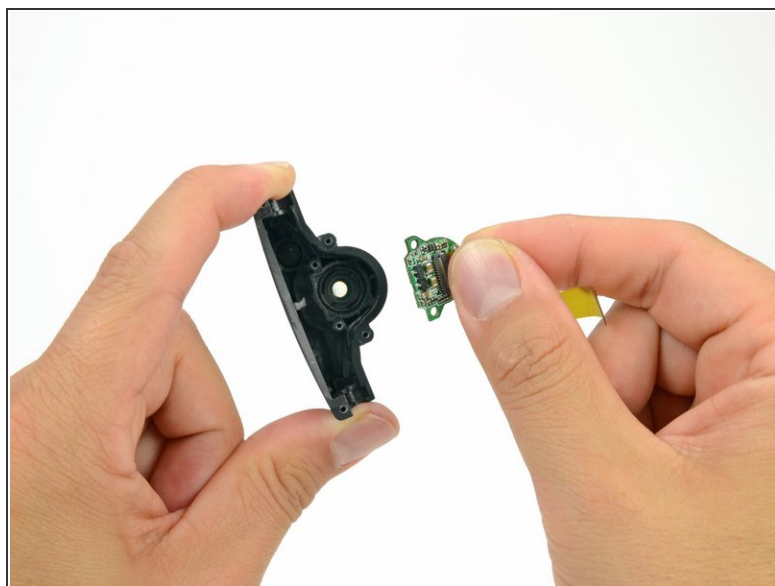
- Grab the edge of the motherboard and gently slide it out of the camera housing.
- ⓘ There may be some resistance due to the foam pad along the bottom of the camera housing.

Step 23 — Camera Sensor



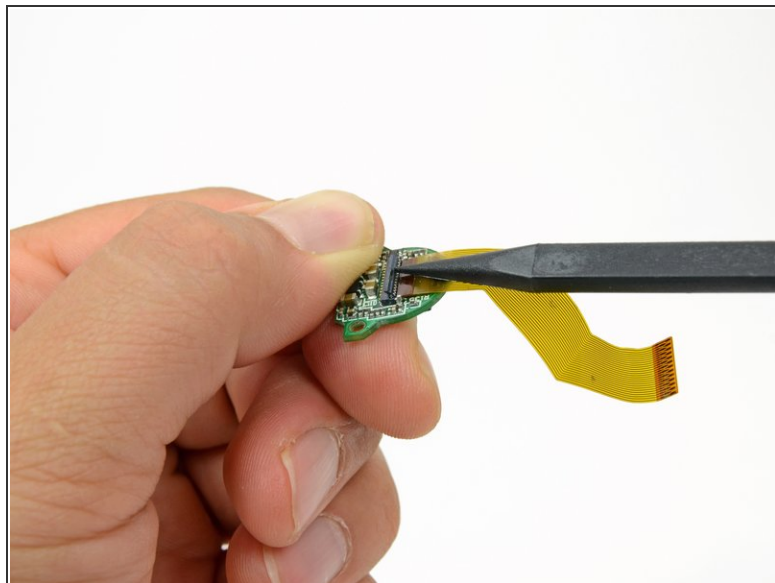
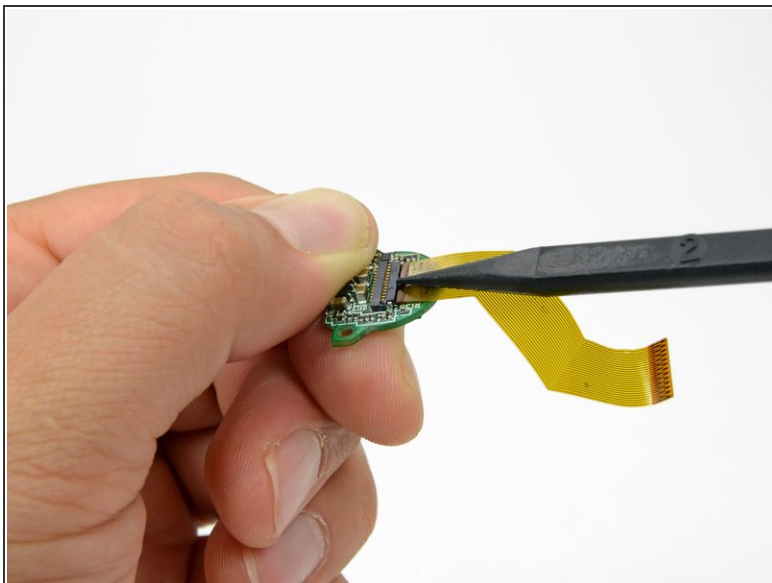
- Remove the two 9.3 mm screws securing the camera sensor board to the camera lens housing.

Step 24



- Grab the camera sensor ribbon cable and remove the sensor board from the camera lens housing.

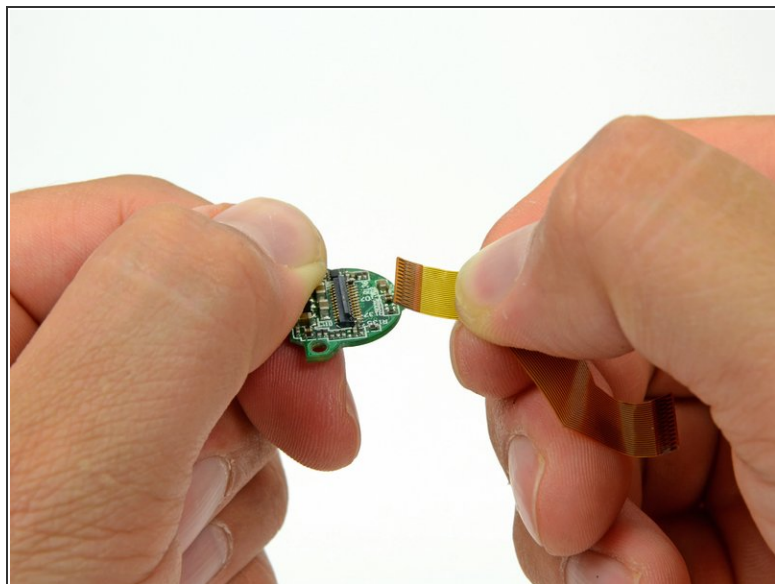
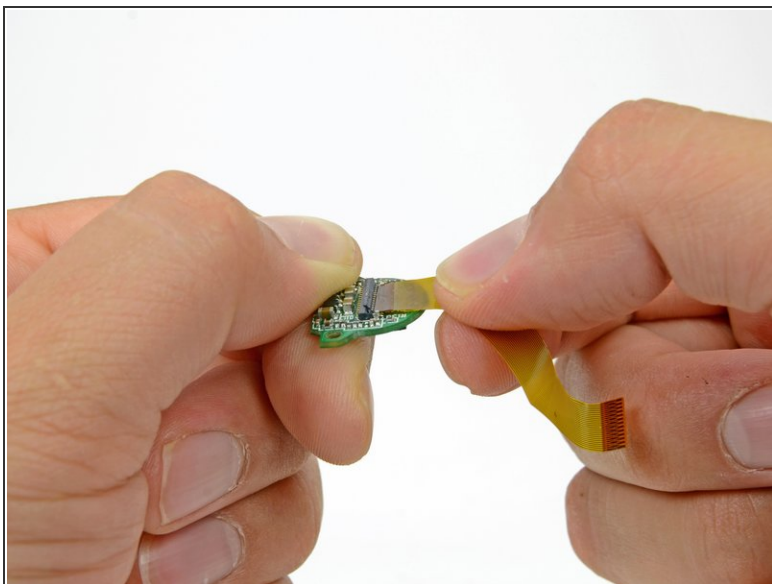
Step 25



- Use the tip of a spudger to flip up the locking tab on the camera sensor ribbon cable ZIF connector.

⚠ Be sure to pry up on the locking tab and not the connector itself.

Step 26



- Pull the camera sensor ribbon cable straight out of its socket on the camera sensor board.

To reassemble your device, follow these instructions in reverse order.