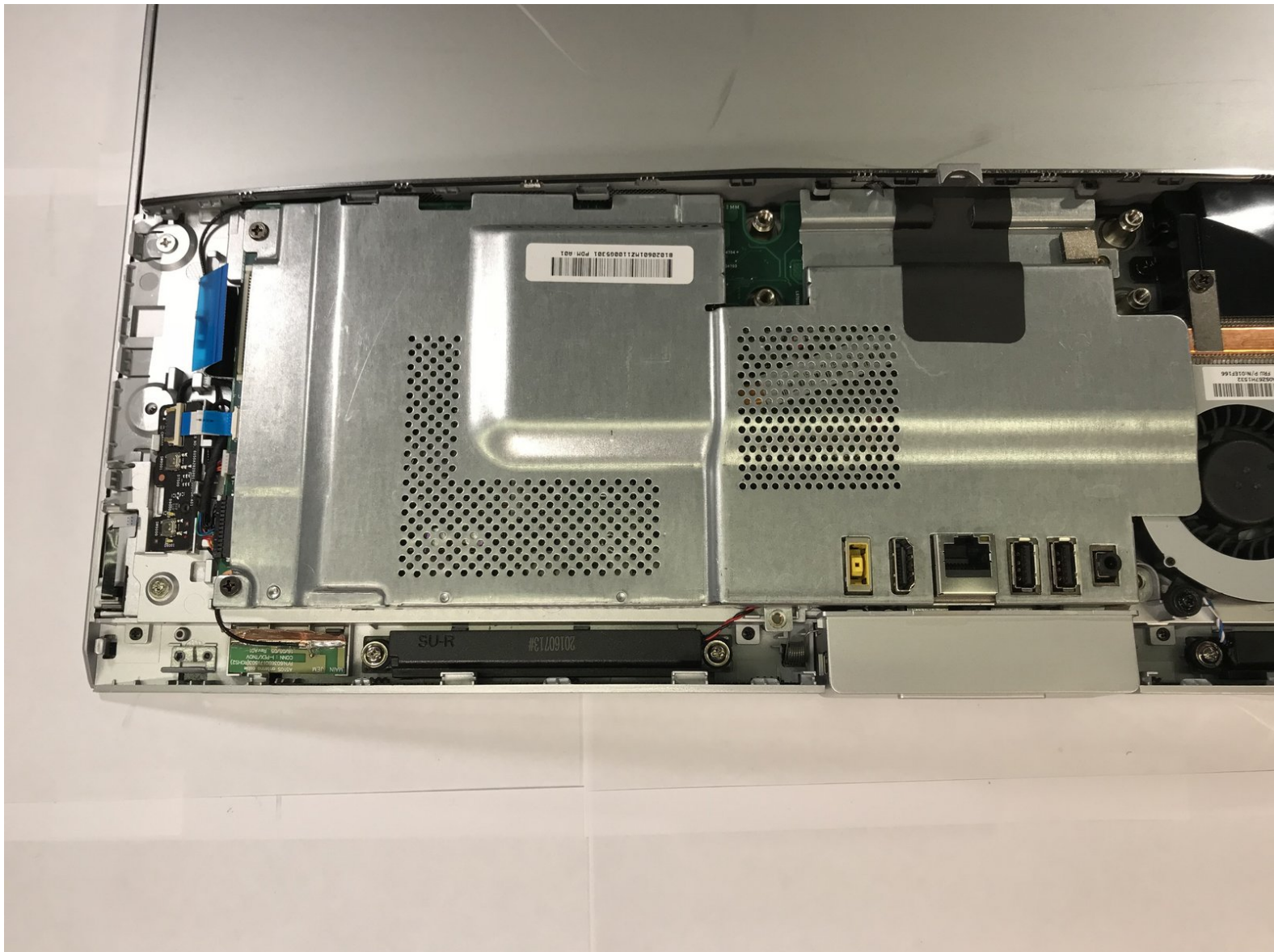




Lenovo IdeaCentre AIO 510S-23ISU EMI Cover Replacement

This guide will show you how to remove the EMI Cover to access the rest of the computer.

Written By: Jackson Blake



INTRODUCTION

This requires a Phillips head screwdriver.

TOOLS:

- [Phillips Head Screwdriver: Size PH1](#) (1)
 - [Spudger](#) (1)
-

Step 1 — Stand Base



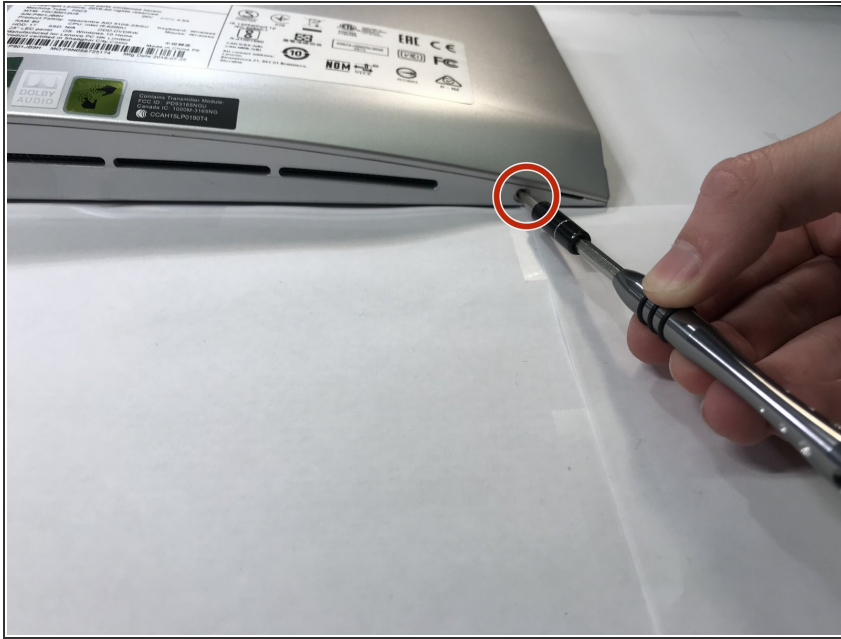
- Turn off the computer, unplug all cables, and let it cool down. Lay the computer flat on its screen.
- ⓘ Make sure that the work surface is flat and has nothing sharp on it.

Step 2



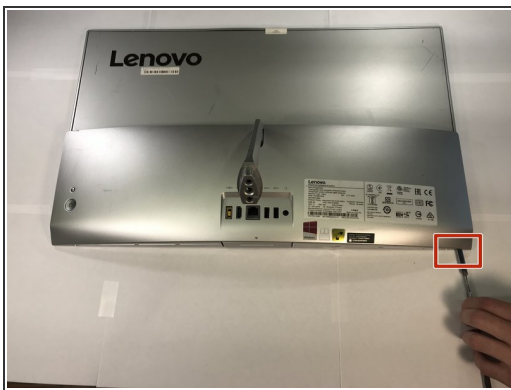
- Remove the monitor stand screw in the bottom of the stand, and remove the stand completely.

Step 3 — Back Cover



- Remove the two screws on the bottom of the computer, one on each side.

Step 4



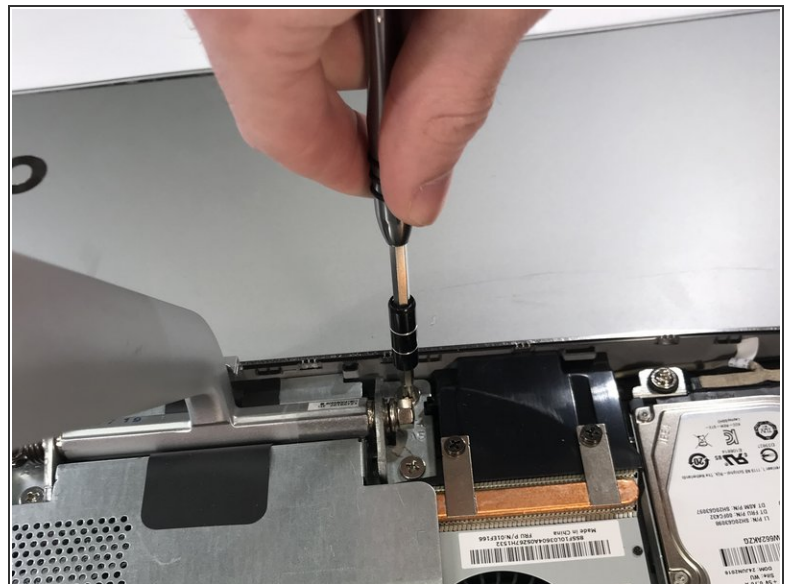
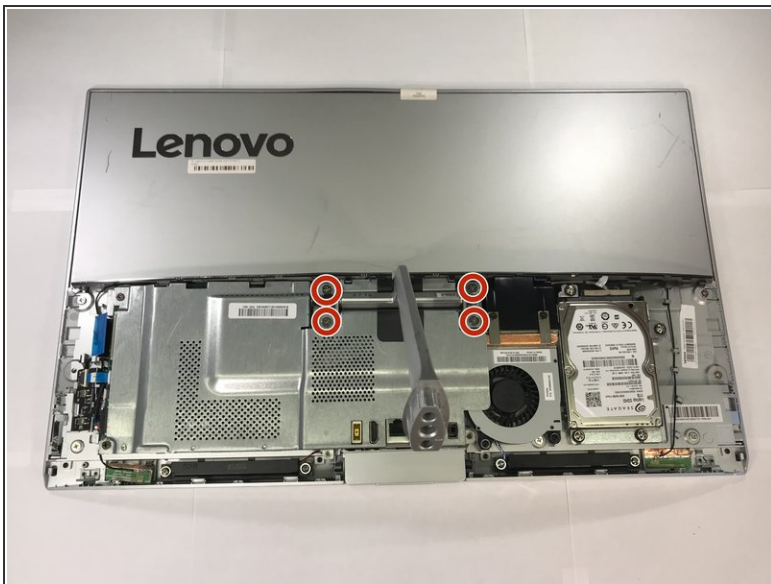
- Locate the slot on the right side of the computer next to the screw hole. Use a plastic opening tool or spudger to pry off the rear cover. (Don't be afraid to use a little force.)

Step 5



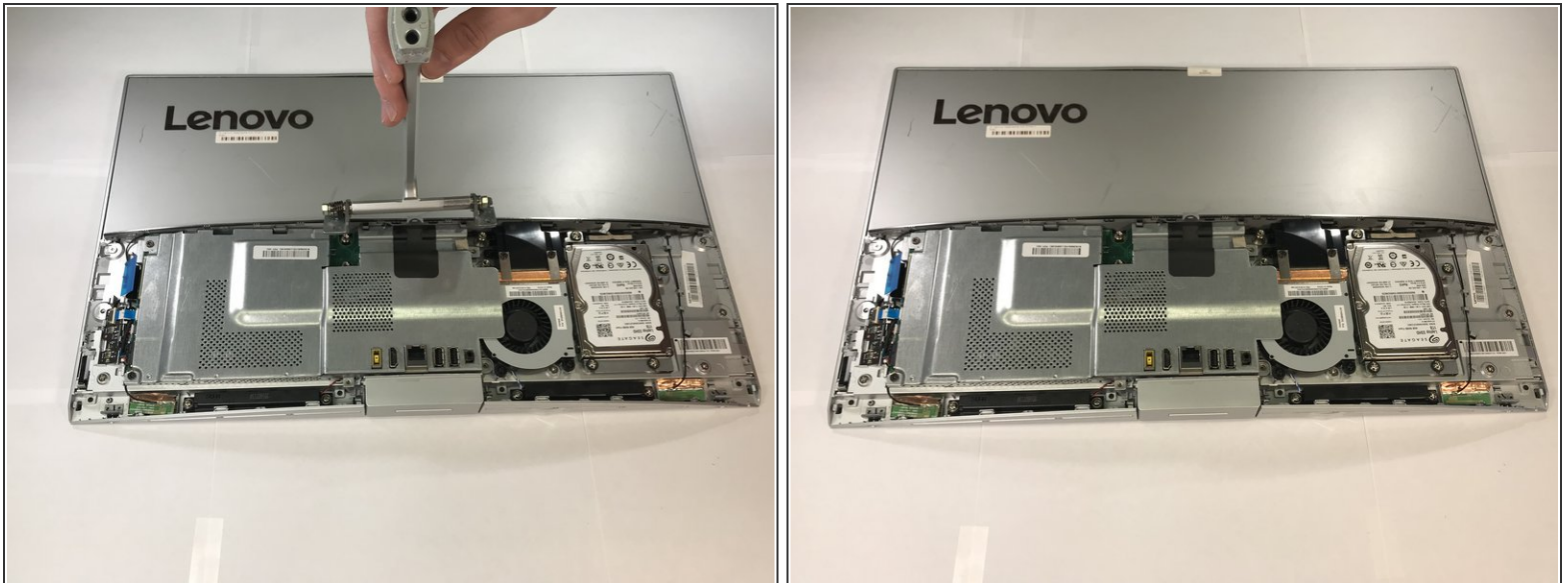
- Once it has been separated, lift to remove.

Step 6 — Arm Stand



- Remove the four screws that secure the arm stand.

Step 7



- Lift up to remove the arm stand.

Step 8 — EMI Cover



- Remove the 5 screws that secure the EMI cover.
- Remove the cover.

To reassemble your device, follow these instructions in reverse order.