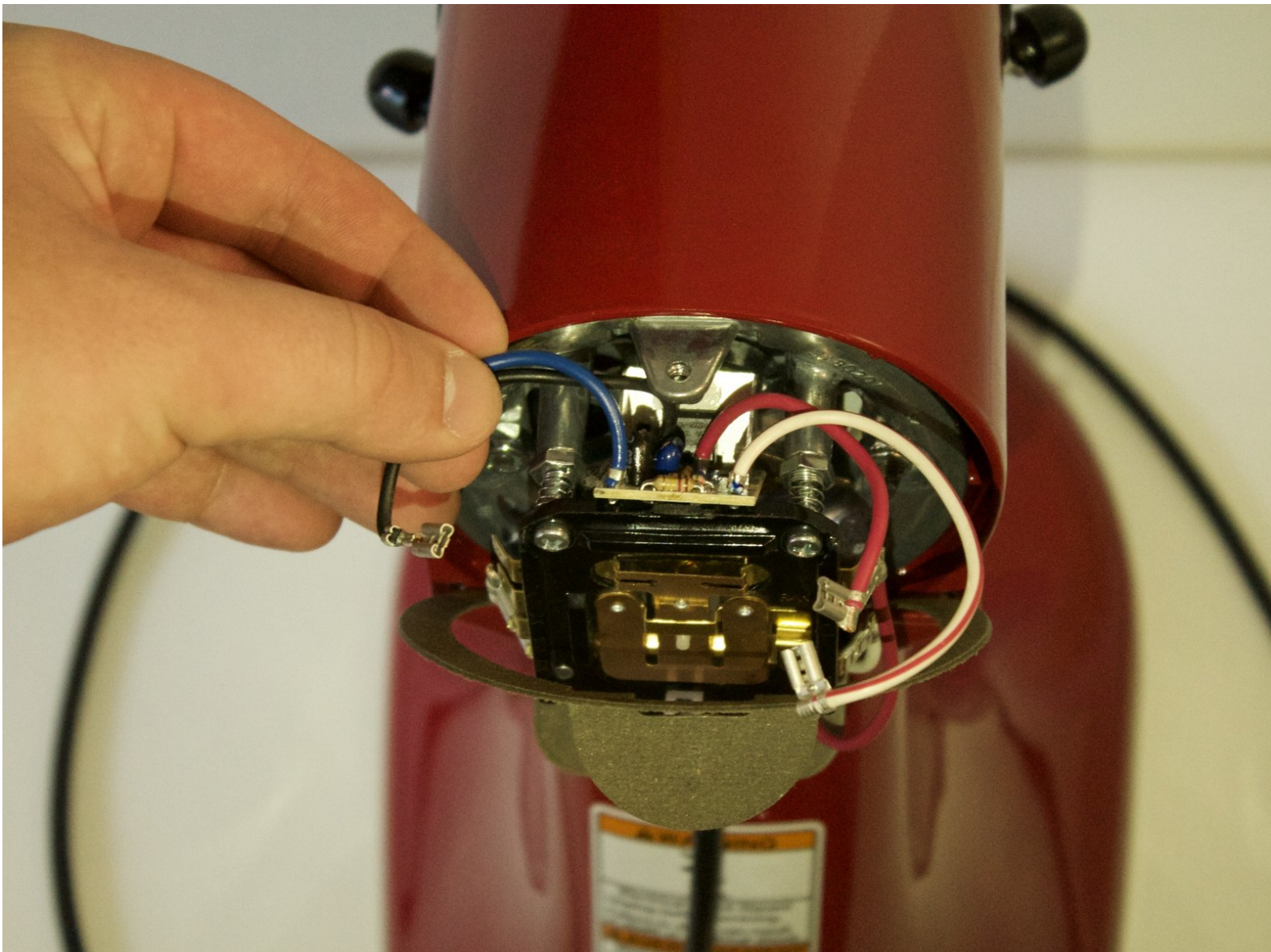




KitchenAid KSM150PSEB Circuit Board Replacement

How to replace circuit board on KitchenAid KitchenAid KSM150PSEB stand mixer if it isn't turning on or changing speeds.

Written By: Luke Leonard



INTRODUCTION

The circuit board is a small part inside the back of the mixer. It is fairly easy to get to and doesn't require many steps.



TOOLS:

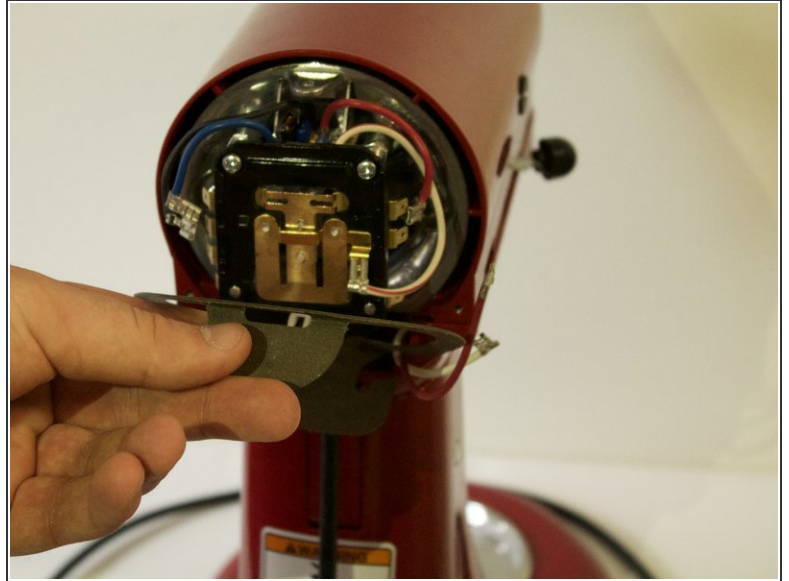
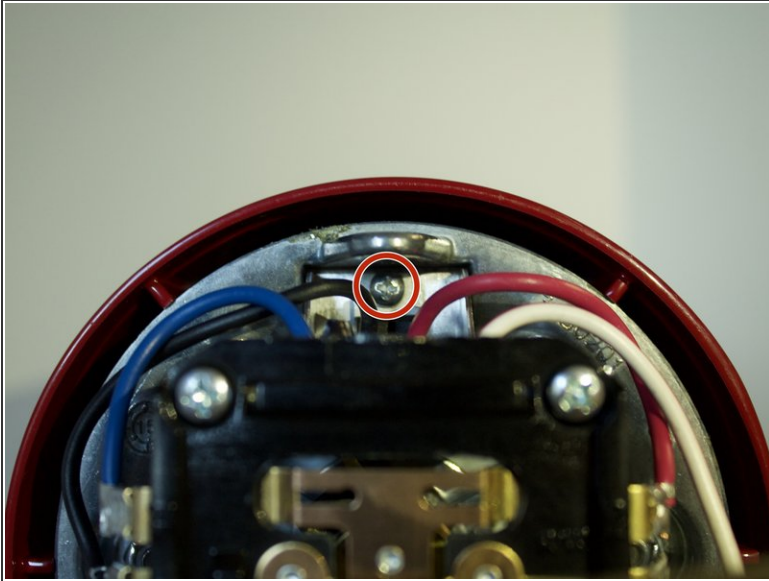
- [Phillips #1 Screwdriver](#) (1)
 - [Phillips #2 Screwdriver](#) (1)
 - [Large Needle Nose Pliers](#) (1)
-

Step 1 — Circuit Board



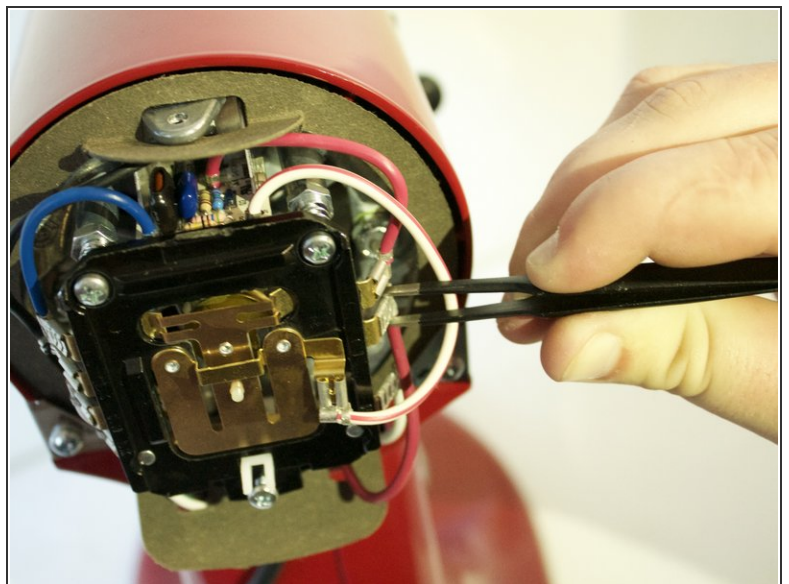
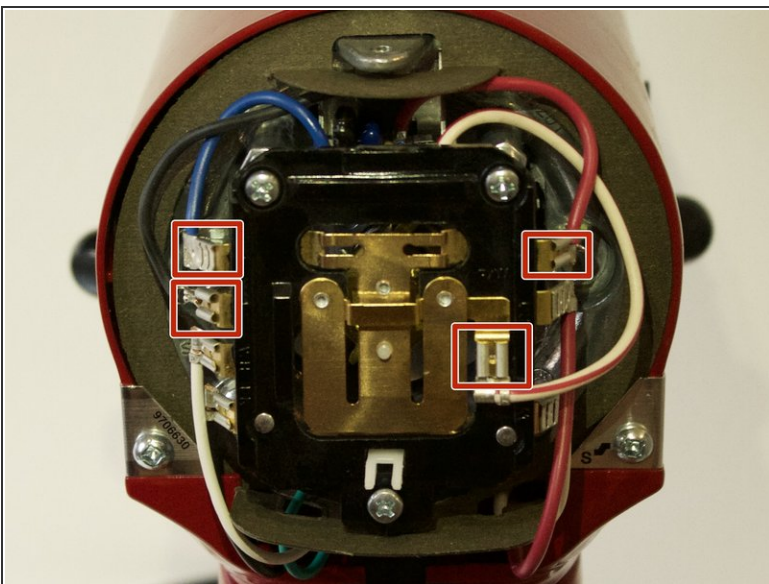
- Using a Phillips #2 screwdriver, remove the 10mm screw on the back cover by rotating it counterclockwise.
 - The back cover is now free. Remove it by pulling it back and up.
- ⚠ Ensure that the mixer is disconnected from any electrical source prior to removing the back cover.

Step 2



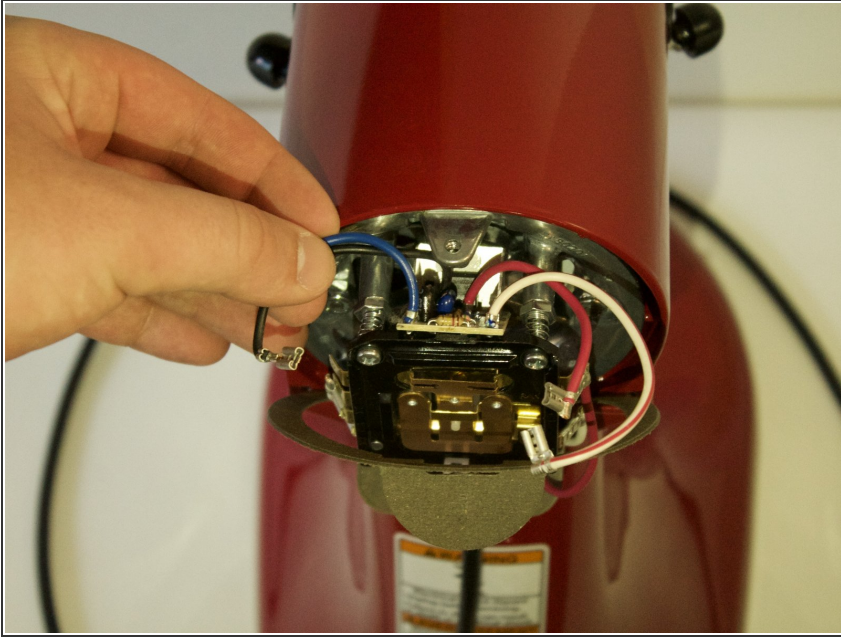
- Using a Phillips #1 screwdriver, remove the 9.5mm screw above the circuit board by rotating it counterclockwise.
- ⓘ If you can't see the screw, try pulling the seal down past the wires to make the screw more accessible.

Step 3



- Using pliers or tweezers, remove the connectors of the four wires attached to the circuit board.

Step 4



- Grab the wires and tilt the edge of the board up to lift the circuit board up and out.

To reassemble your device, follow these instructions in reverse order.