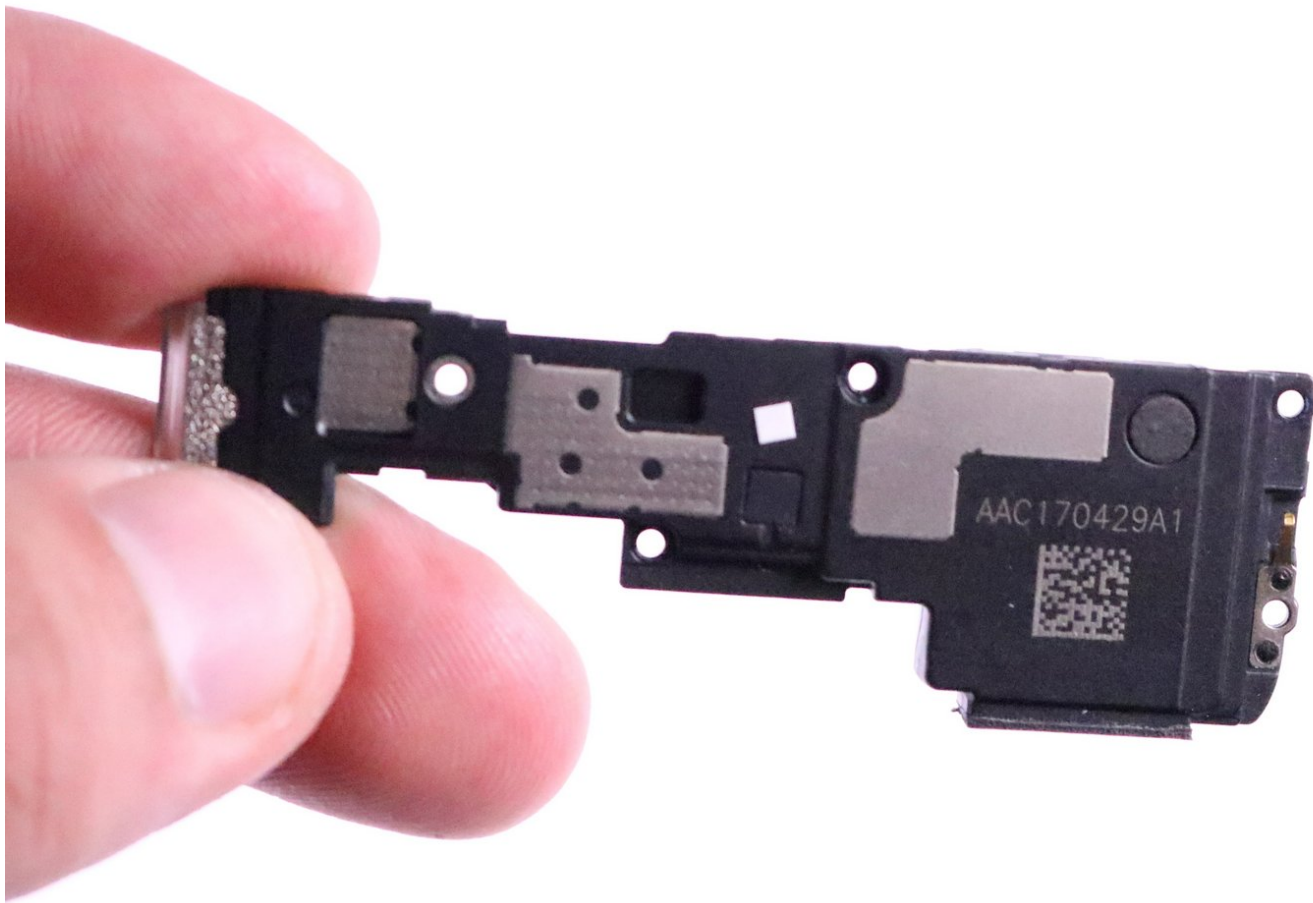




OnePlus 5 Speaker Replacement

This guide will give step-by-step directions on how to replace the loudspeaker on the One Plus 5.

Written By: Jose Velazquez



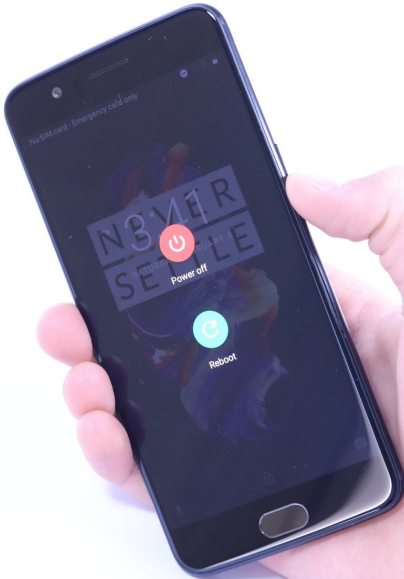
INTRODUCTION

This is a guide for replacing a faulty loudspeaker in the OnePlus 5. Replacing the loudspeaker does not void the OnePlus 5 warranty. No special skills are needed for this replacement.

TOOLS:

- [T2 Torx Screwdriver](#) (1)
 - [Suction Handle](#) (1)
 - [Spudger](#) (1)
 - [iFixit Opening Tools](#) (1)
 - [SIM Card Eject Tool](#) (1)
 - [Phillips #0 Screwdriver](#) (1)
-

Step 1 — Back Panel Replacement



- ❗ Always make sure to turn off the phone before attempting to replace a part.
- Power off the phone by holding down the rectangular power button on right side and pressing the red button that says "Power off."

Step 2



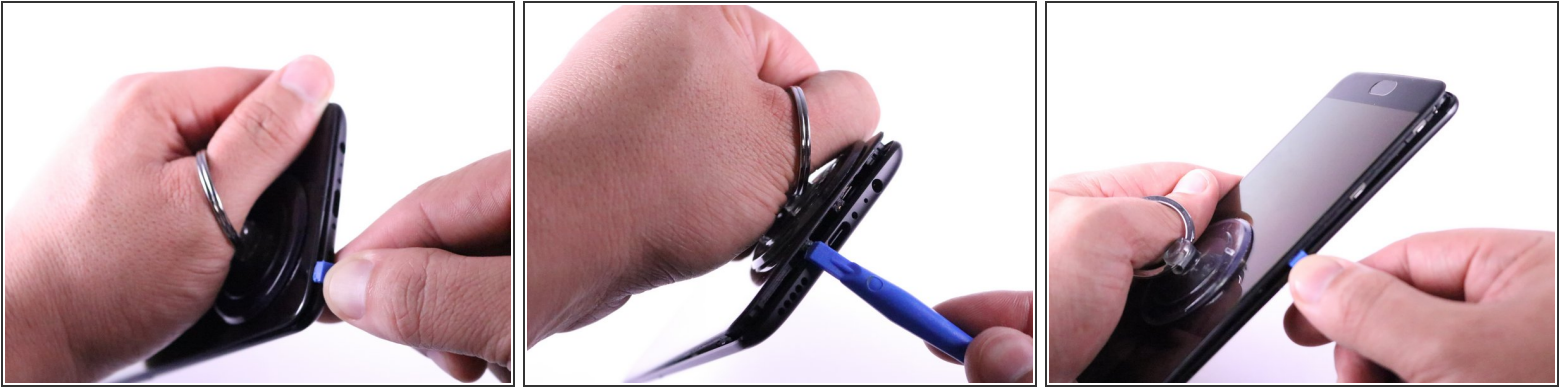
- Remove the two 1mm Torx #2 screws at the bottom of the phone by rotating the screwdriver counter-clockwise.

Step 3



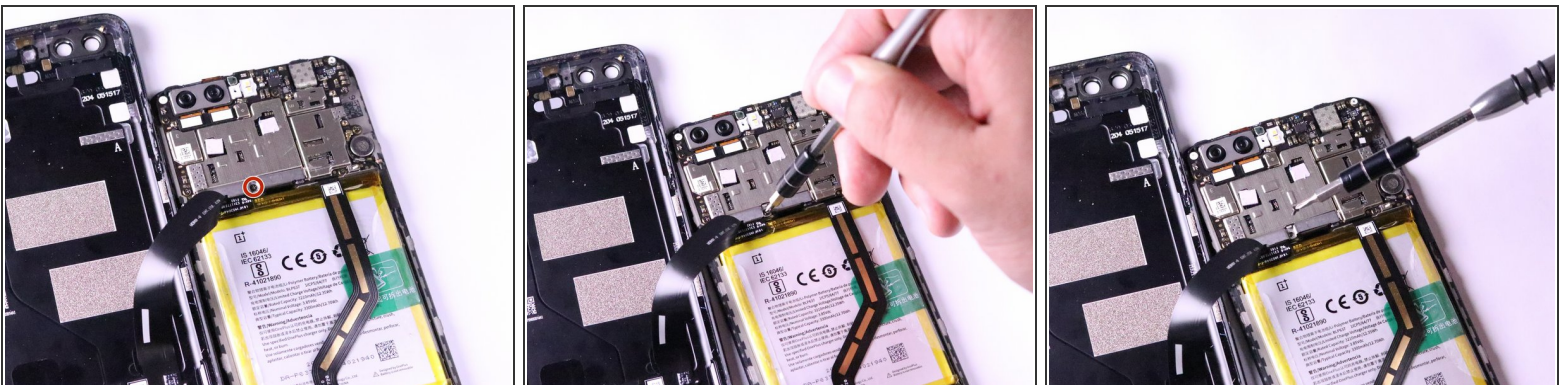
- Locate the sim card on the right side of the phone.
- Insert the SIM ejector screwdriver bit into the hole left of the sim card holder by applying pressure.
- ⓘ It is also okay to use the SIM card eject tool for this step.
- Remove the sim card holder by pulling it out with your fingers.

Step 4



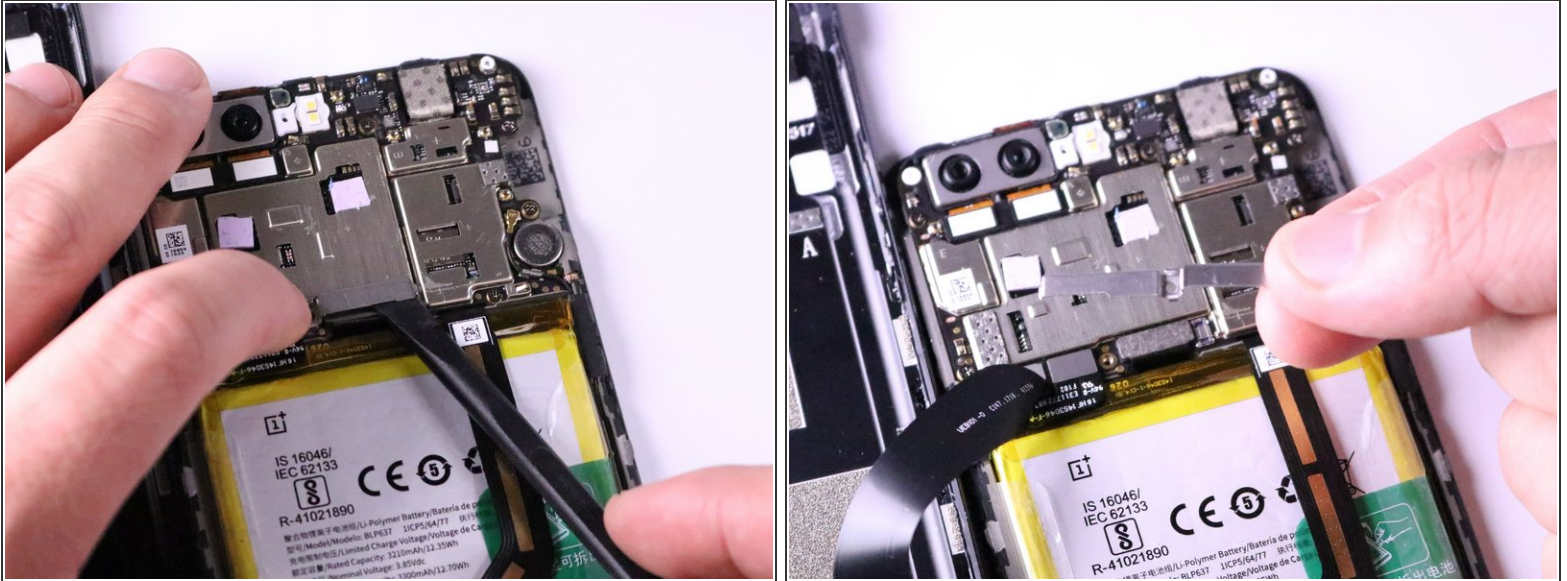
- Insert the plastic iFixit opening tool between the the plastic rim of the screen and the metal edge of the phone.
 - Place a suction cup on the screen to gain more leverage when separating the screen from the back plate.
 - Moving right to left around the phone, carefully pry the screen away from the back plate by wiggling the iFixit opening tool and pulling the suction cup in the opposite direction.
- ☒ When reassembling, apply pressure to the edges of the screen and back plate together until they pop back into place.

Step 5



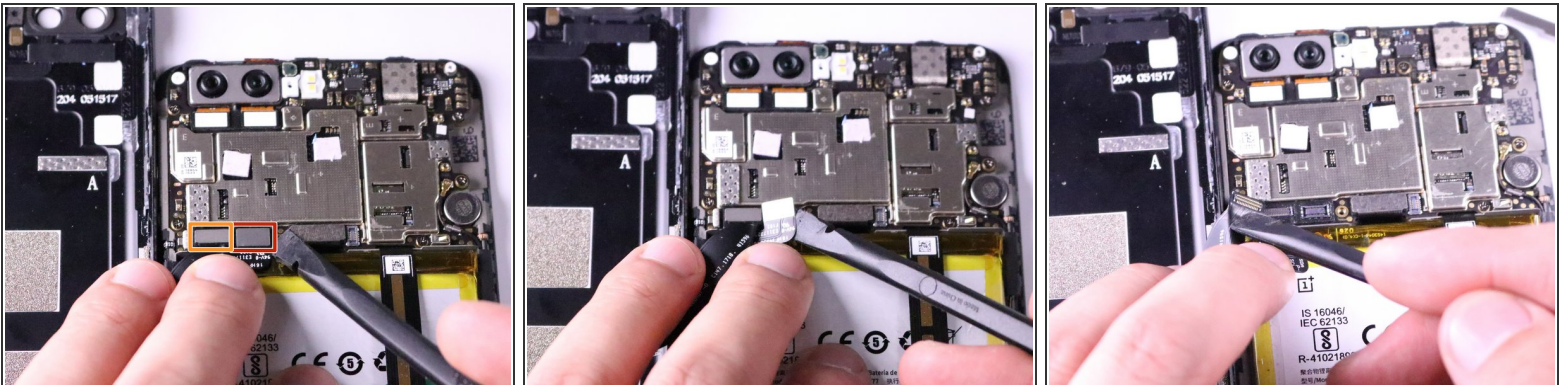
- Locate the metal connector cap on the upper half of the device directly above the battery.
- Remove the 1mm Phillips #0 screw from the metal connector cap by rotating the screwdriver counter-clockwise.

Step 6



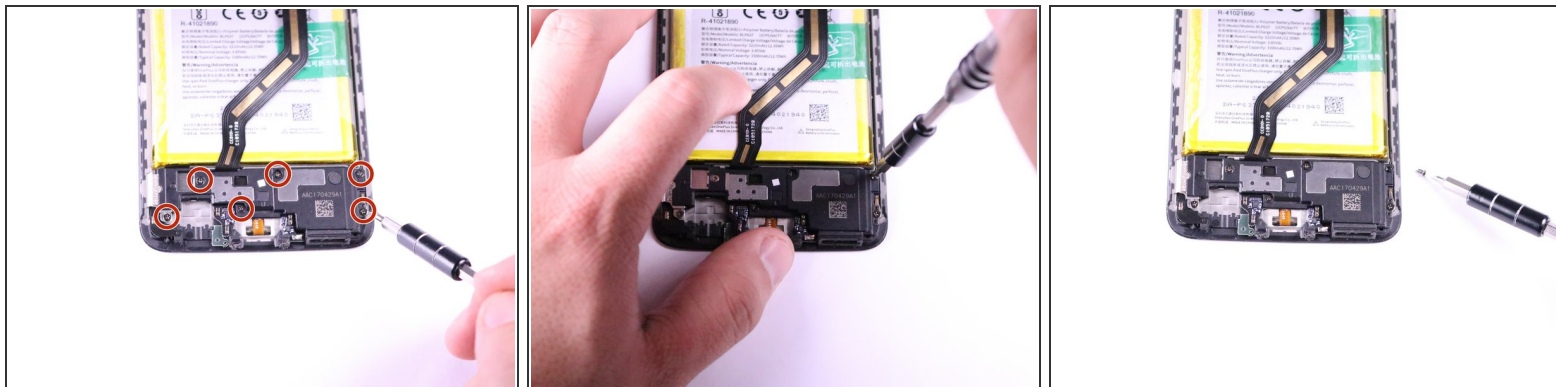
- Carefully pop out the metal connector cap with the nylon spudger and remove it by pulling up.

Step 7



- Locate the two connectors directly above the battery on the left side of the device.
- Remove the battery connector cable located to the right of the charging port connector cable using a nylon spudger by prying underneath it and popping it up.
- Remove the charging port connector cable to the left of the battery cable using a nylon spudger by prying underneath it and popping it up.

Step 8 — Loudspeaker



- Remove the six 1mm Phillips #0 screws by rotating the screwdriver counter-clockwise.

Step 9



- Remove the loudspeaker by gently pushing the spudger underneath it and prying it out.

To reassemble your device, follow these instructions in reverse order.