



LG V30 Battery Replacement

This guide will show you how to replace the...

Written By: Witrigs



INTRODUCTION

This guide will show you how to replace the battery in the LG V30 (and V30+) smartphone. If your battery is draining too quickly or has stopped charging fully, replacing the battery should alleviate your issues.

This guide involves removing the back cover of your device, so you will need replacement adhesive to reattach the back cover to the phone. This guide also involves removing the battery of your device, which is attached to the inside of the phone using adhesive. You will need replacement adhesive to reattach the battery to the inside of the phone.

Before disassembling your device, be sure the battery is charged below 25%. If accidentally punctured or damaged, the battery can catch fire and/or explode; if discharged below 25%, the chances of fire/explosion are decreased.

Alternatively, use this [LG V30 Battery Replacement video](#) to replace the battery in your LG V30 smartphone.

[video: <https://www.youtube.com/watch?v=TaiKUS4yWxs&t=6s>]



TOOLS:

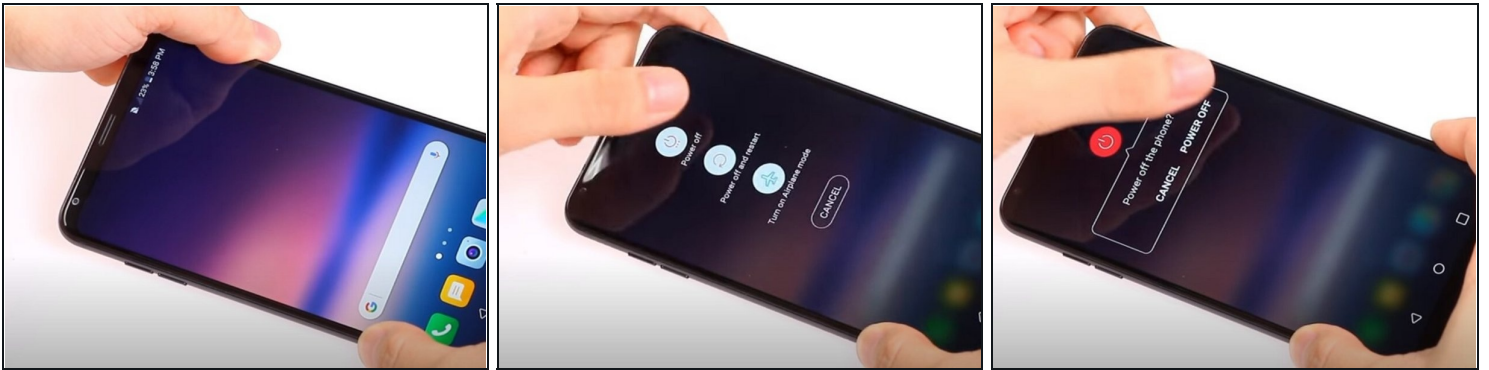
[Heat Gun](#) (1)
[Plastic Cards](#) (1)
[Phillips #000 Screwdriver](#) (1)
[Tweezers](#) (1)
[Spudger](#) (1)
[Suction Handle](#) (1)
[SIM Card Eject Tool](#) (1)



PARTS:

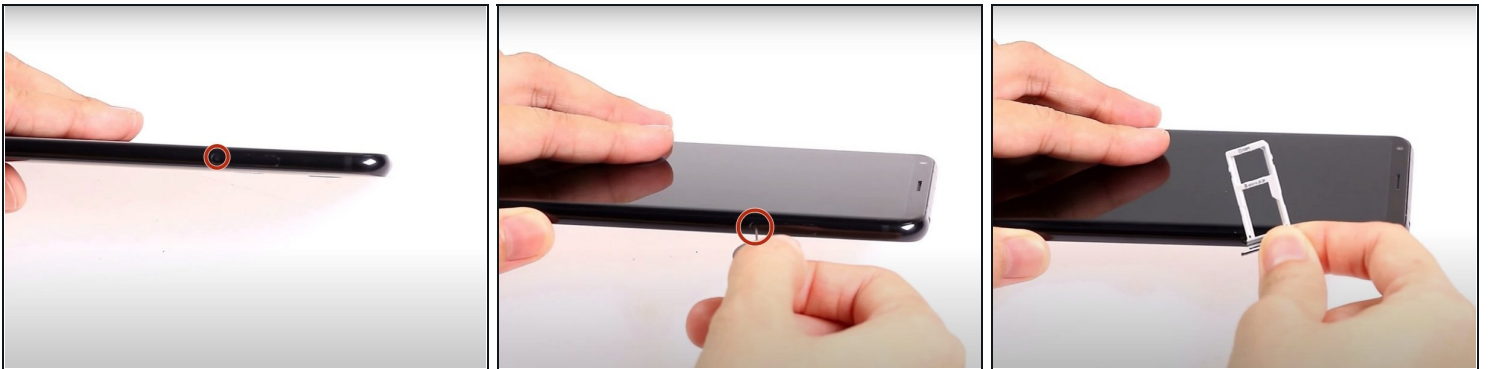
[LG V30 Battery](#) (1)

Step 1 — Power Off



- Drain the battery's charge below 25%.
- Power off the phone by pressing and holding the Power/Lock key on the backside of the phone for three seconds. Tap the Power Off option and Power Off to confirm.

Step 2 — Remove SIM Tray/Card



- Insert and gently push the SIM card ejector tool (or an unfolded paperclip) into the small hole on the left side of the phone.
 - Press gently to eject the SIM tray.
 - Remove the SIM card tray from the device.
- ☒ To reinsert the SIM card tray, orient the SIM card with the gold contacts facing up and the notch to the bottom right. Reinsert the SIM card by pressing the card gently into the SIM tray slot.

Step 3 — Heat Backing's Adhesive



- Use a heat gun to lightly heat the edges of the back to soften the adhesive that connects the back cover to the rest of the frame.

ⓘ An iFixit iOpener, hair dryer, or hot plate can also be used to heat the edges. See the [iOpener instructions guide](#) to learn how to use an iOpener.

⚠ Using a heat gun, hair dryer, or hot plate will make the metal frame rather hot to the touch, so handle it with care.

⚠ Be careful not to overheat the device –the OLED display, battery and other internal parts can be damaged by excessive heat. Approximately one minute should be enough to soften the adhesive.

Step 4



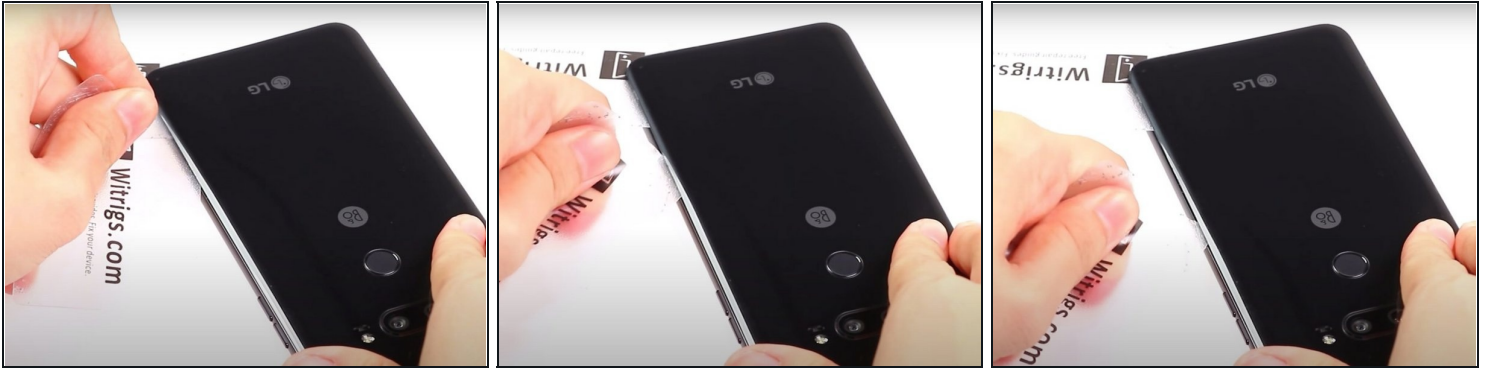
- Use a suction cup to lift up the back cover up.
- Insert the edge of a [plastic card](#) into the space created between the cover and frame.

Step 5



- Insert a second card where you have created an opening with the first card and slide it along the bottom edge of the phone.

Step 6



- Continue to slide the cards around the remaining three edges to release the adhesive.

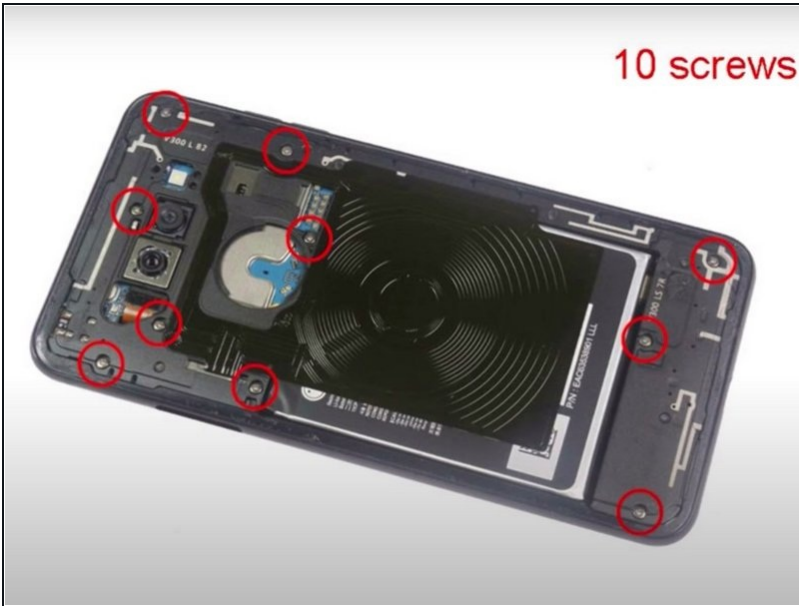
Step 7 — Remove Back Cover



- Carefully remove the back cover, making sure that the adhesive is sliced through on all sides.
- ⓘ Because this phone's backing is attached using adhesive, you will need to replace the adhesive when re-assembling the phone.

Step 8

10 screws



- Remove the ten Phillips #000 screws from the midframe.

Step 9



- Using a plastic spudger, pry up the midframe of the phone.

Step 10 — Remove Midframe



- Carefully pull the midframe from the rest of the phone's body.
- The midframe is connected to the main body with a small slot on the right side of the midframe. Carefully free the frame from this slot by gently wiggling and pulling outwards at the same time.

Step 11



- Use the plastic spudger to pry up the four press-fit connectors on the top portion of the motherboard.

Step 12 — Remove Speaker Assembly



- Pry up the speaker panel with a plastic spudger and remove it from the phone.

Step 13



- Use a heat gun to apply heat to the front face of the phone. This will soften the adhesive used to secure the phone's battery.

⚠ When using a heat gun or hair dryer to soften the adhesive, be careful not to overheat the battery. The hair dryer/heat gun will make the phone hot to the touch, so handle the phone with care.

- Alternatively, you can place a [heated iOpener](#) across the top of the battery for approximately three minutes to soften the adhesive holding the battery to the device.
- ① If you have multiple iOpeners, it is recommended to also put one on the screen side of the battery.

Step 14



- Insert a plastic card at the bottom edge of the battery
- Gently work the plastic card around the left side of the battery, separating the battery from its adhesive.

Step 15 — Remove Battery



- Use the plastic card to pry the battery upwards from its slot.
 - Use your fingers to lift the battery away from the phone.
- ⓘ Because this battery is attached using adhesive, you will need to replace the adhesive when installing a new battery.

To reassemble your device, follow these instructions in reverse order. After installing a new battery, run down its charge completely. Then, charge the battery fully. This will calibrate the new battery. Then, use the phone normally.