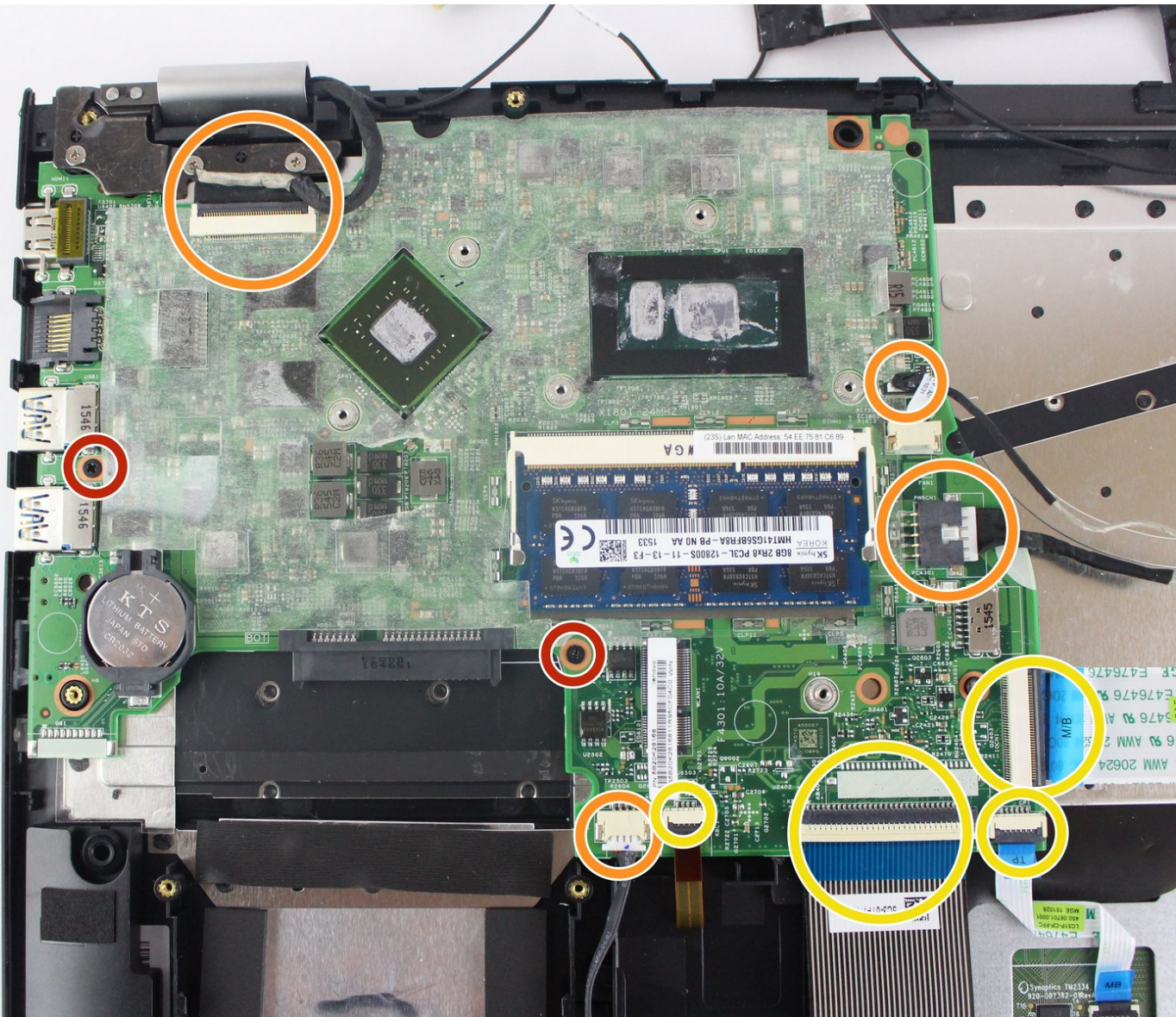




Lenovo Edge 2-1580 Motherboard Replacement

This guide describes a step to step progress to replace the Motherboard of a Lenovo Edge 2 - 1580 device.

Written By: Julian Escallon



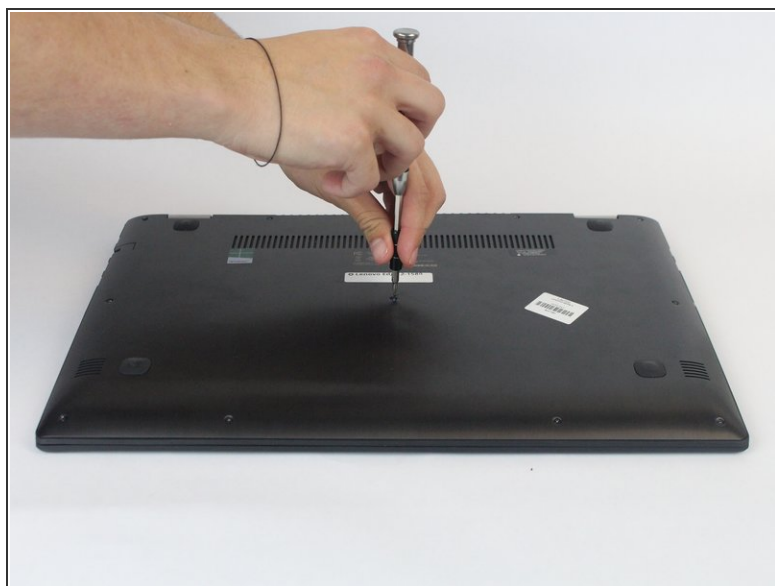
INTRODUCTION

The guide will show you how to remove the motherboard from the laptop. The process requires a lot of disarming, and a place to safely deposit screws is recommended.

TOOLS:

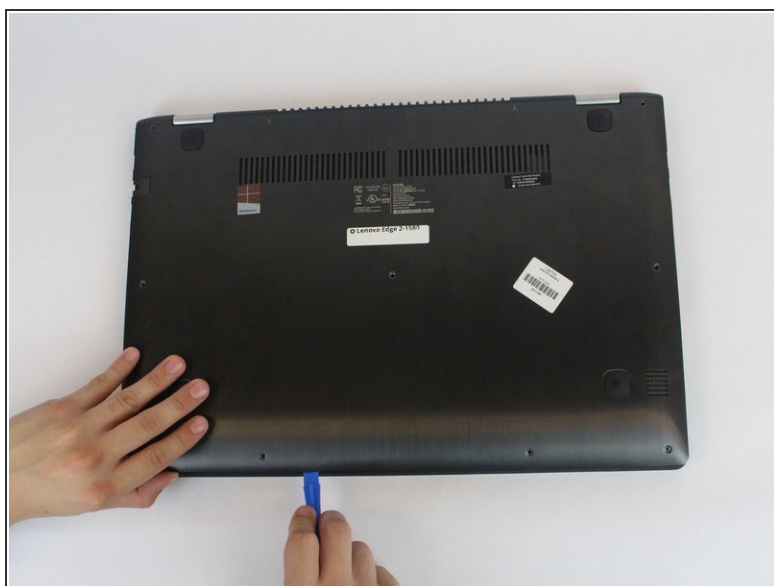
- [Phillips #0 Screwdriver](#) (1)
 - [iFixit Opening Tools](#) (1)
 - [Tweezers](#) (1)
-

Step 1 — Battery



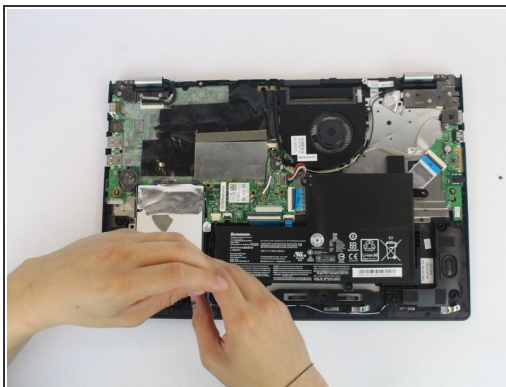
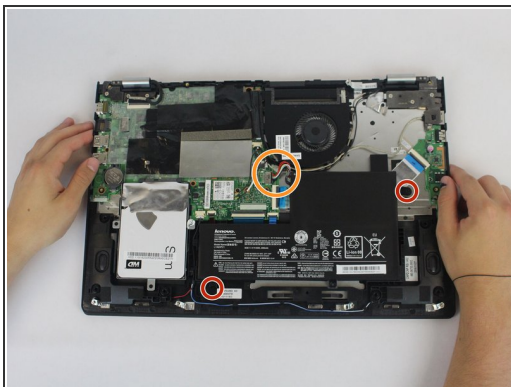
- Using the Phillips #0 screwdriver, remove the (11) eleven 5.4 mm screws from the back panel.

Step 2



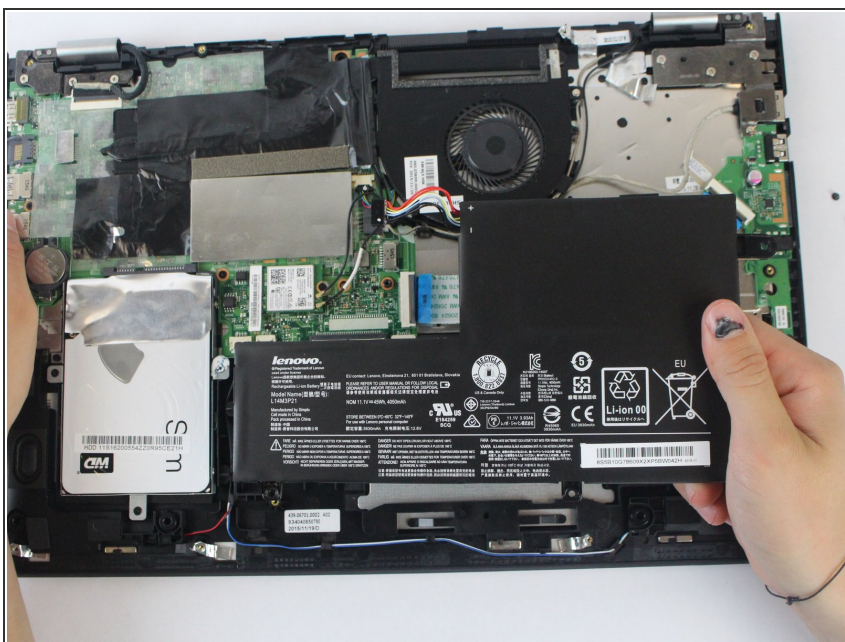
- Using a plastic opening tool, pull out the back panel from the laptop.

Step 3



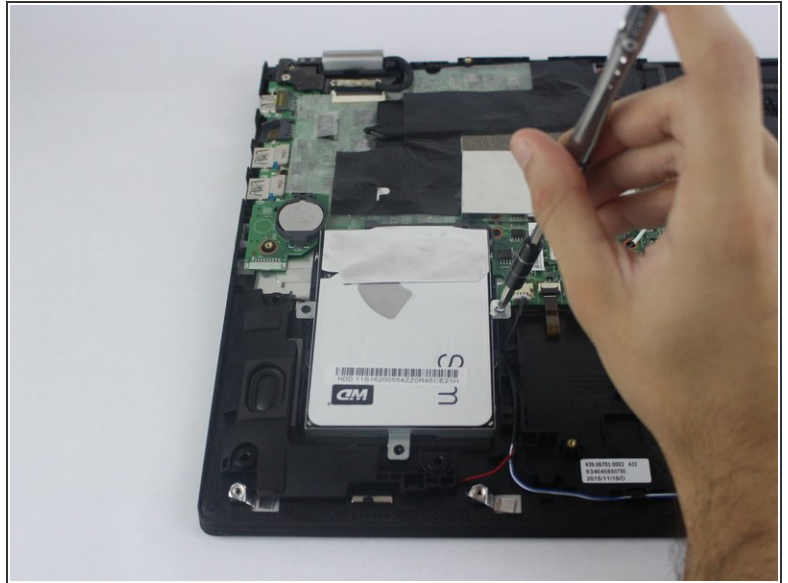
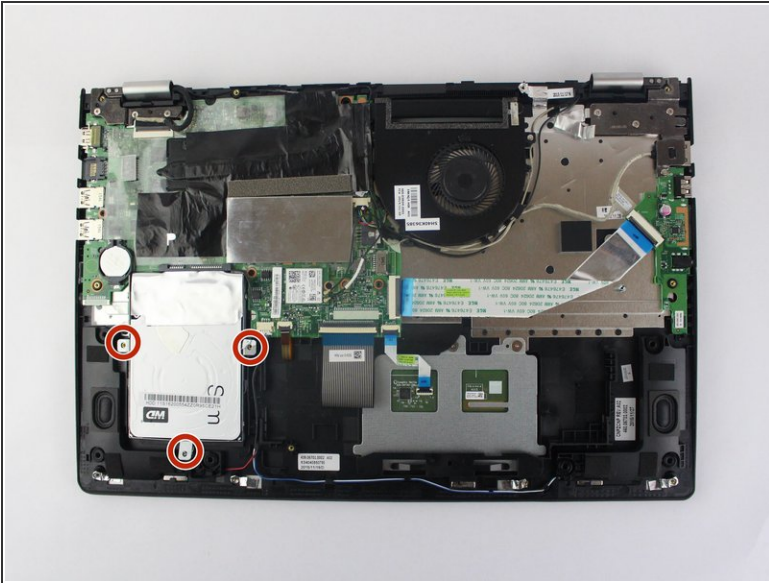
- Using the Phillips #0 screwdriver, remove the (2) 5.4 mm screws.
- Disconnect the battery connector from the motherboard.

Step 4



- Pull the battery outward and remove it from the rest of the laptop.

Step 5 — Hard drive



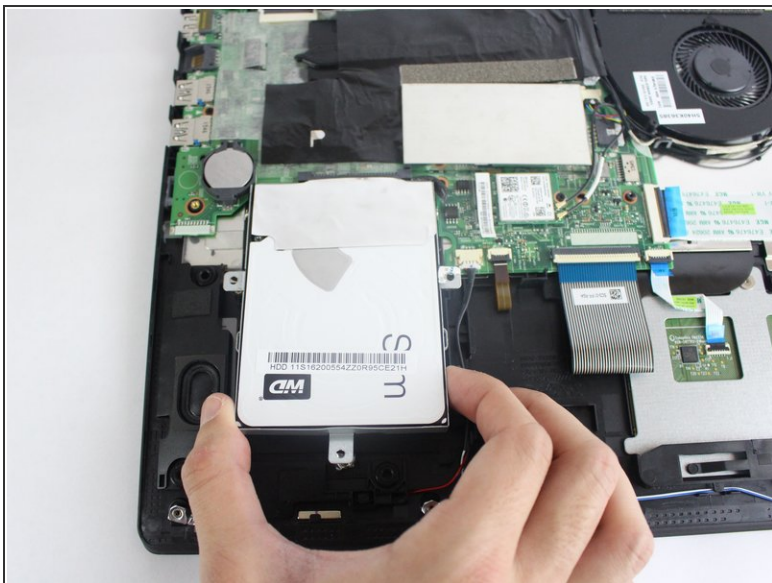
- Using the Phillips #0 screwdriver, remove the (3) three 3 mm screws.

Step 6



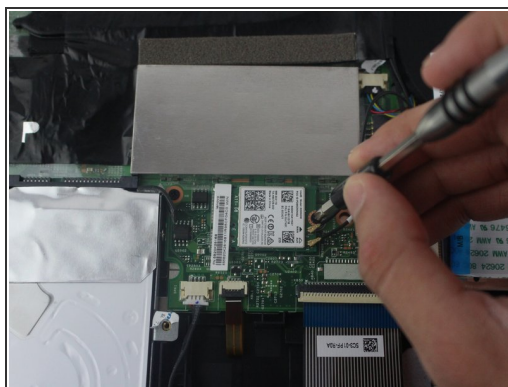
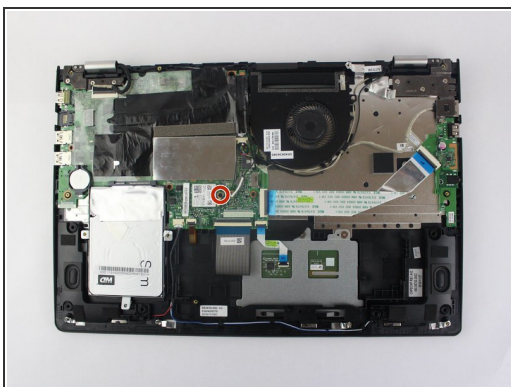
- Slide the drive away from the connector by applying pressure on the two side tabs where screws were removed. Use a plastic opening tool as a lever to lift the drive out.

Step 7



- Carefully, using your hand, remove the hard drive from the laptop.

Step 8 — Fan



- Remove the 5.4 mm Phillips #0 screw holding the Wireless Network Card.

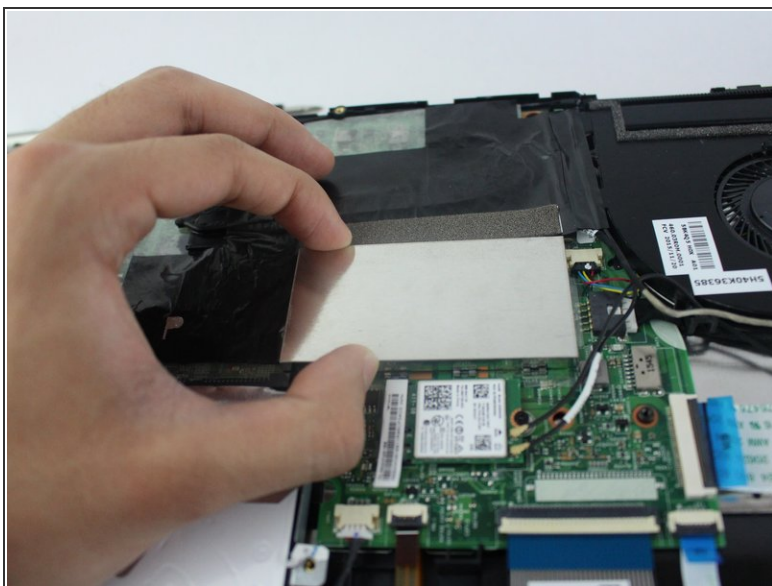
i The network card will pop up by itself.

Step 9



- Grab the network card and gently pull it out.

Step 10



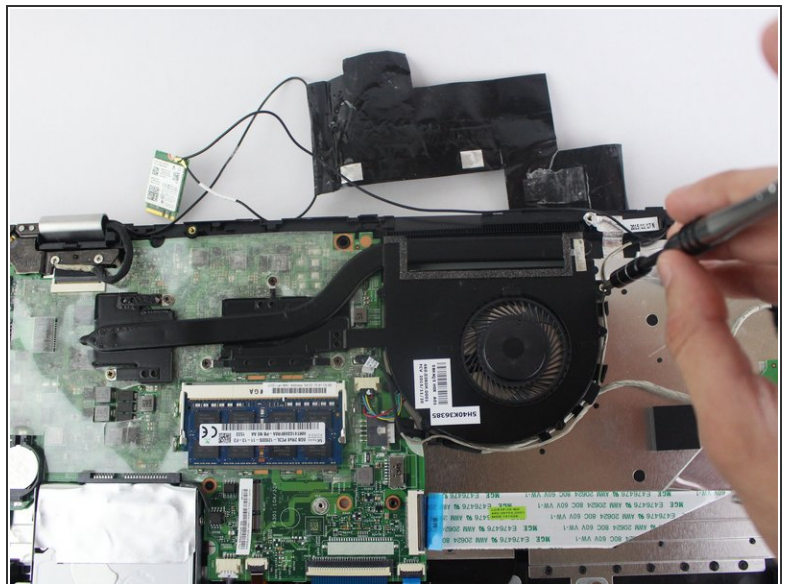
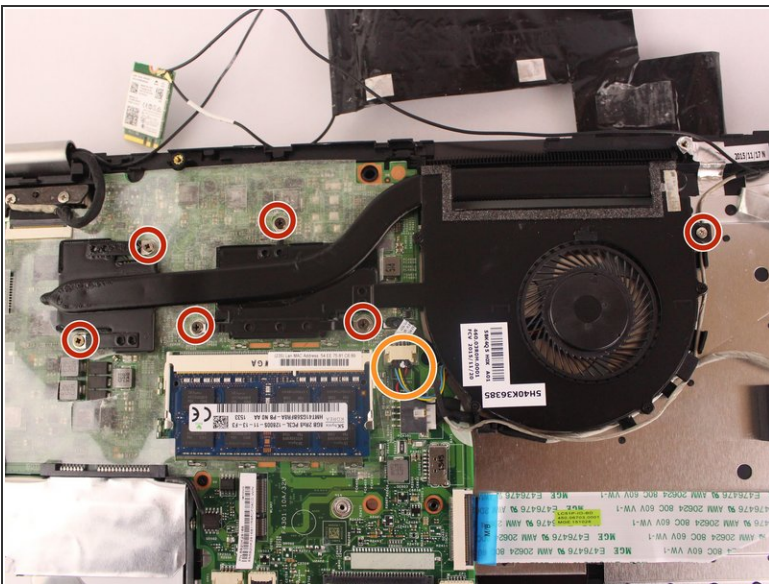
- Pull out the RAM metallic cover.

Step 11



- Grab the black insulating tape and pull it out.

Step 12



- Using the Phillips #0 screwdriver, remove the (6) six fan screws from the device.

(i) (5) Five copper and (1) one silver Phillips #0 5.4mm screws.

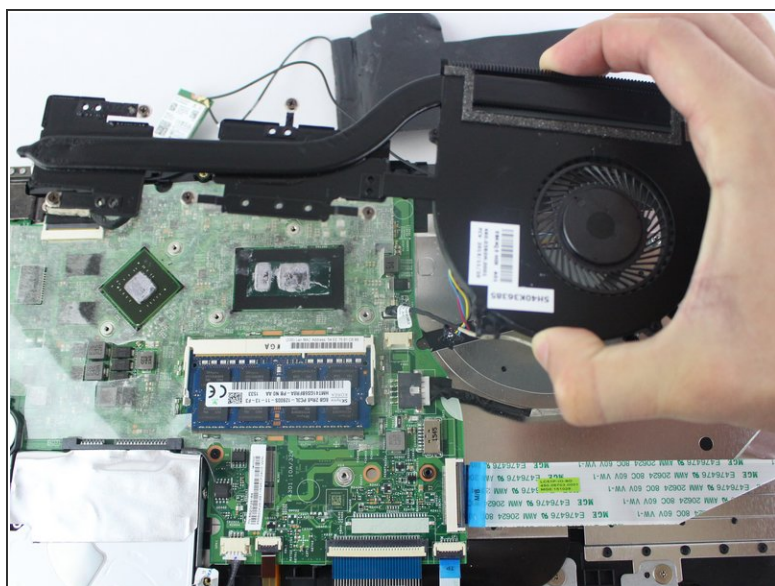
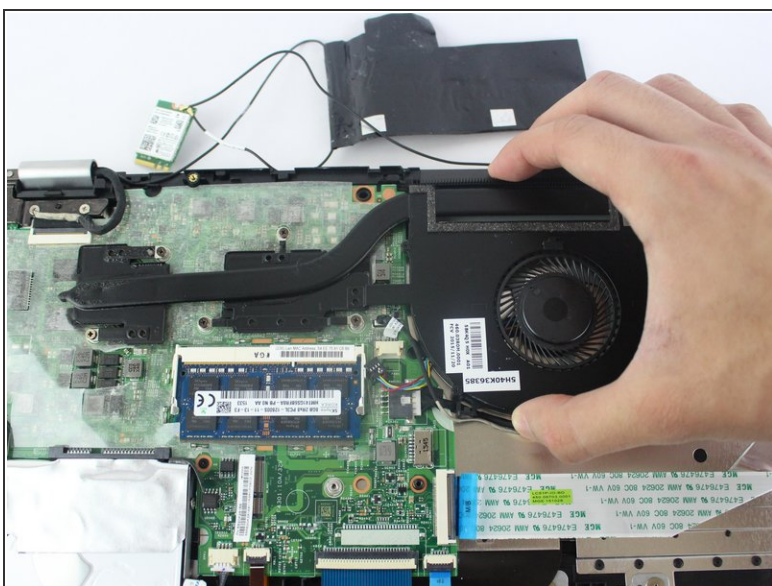
- Disconnect the fan from the motherboard.

Step 13



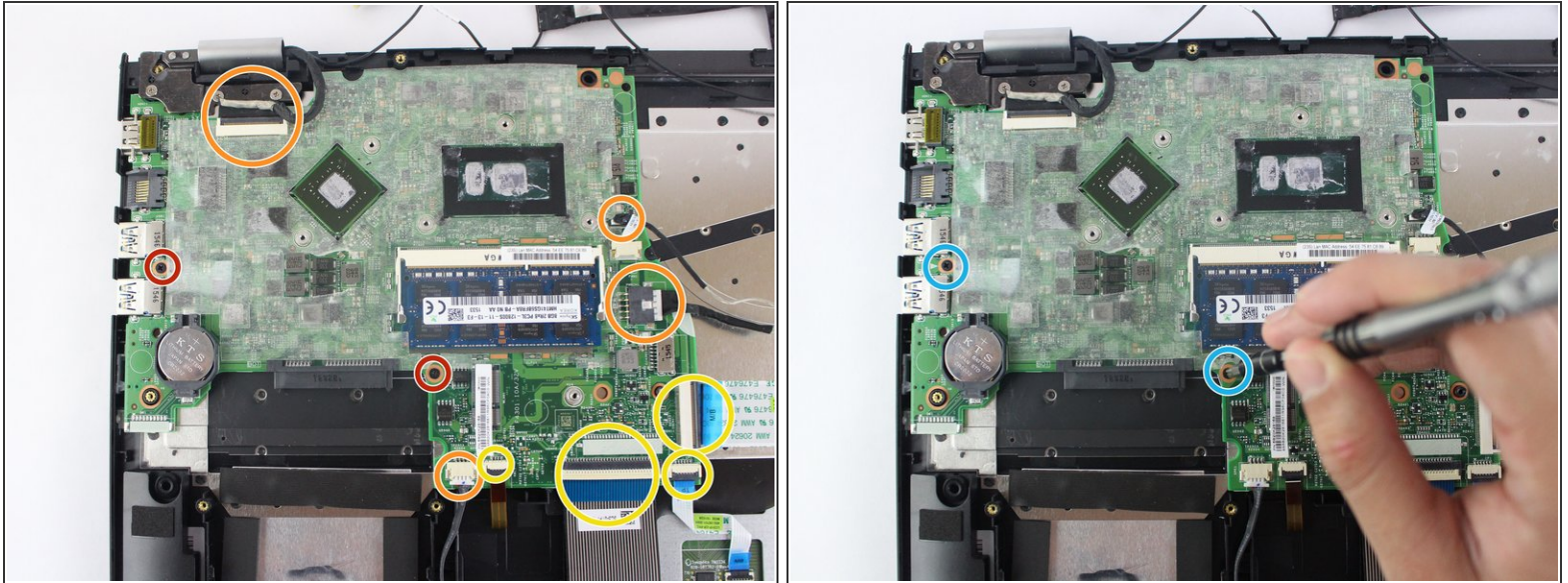
- Unplug the Fan connector from its socket on the motherboard.

Step 14



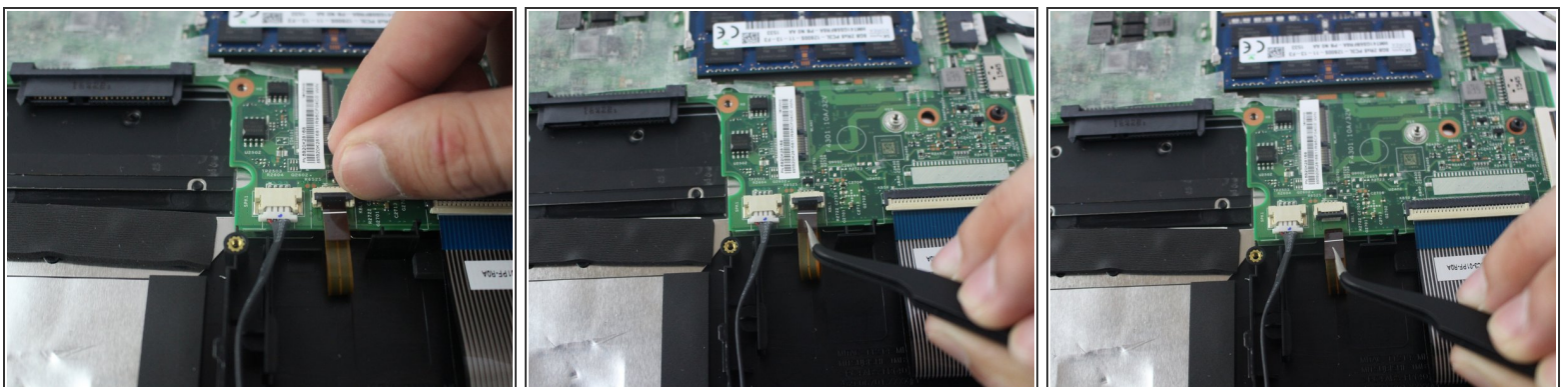
- Carefully remove the fan from the laptop.

Step 15 — Motherboard



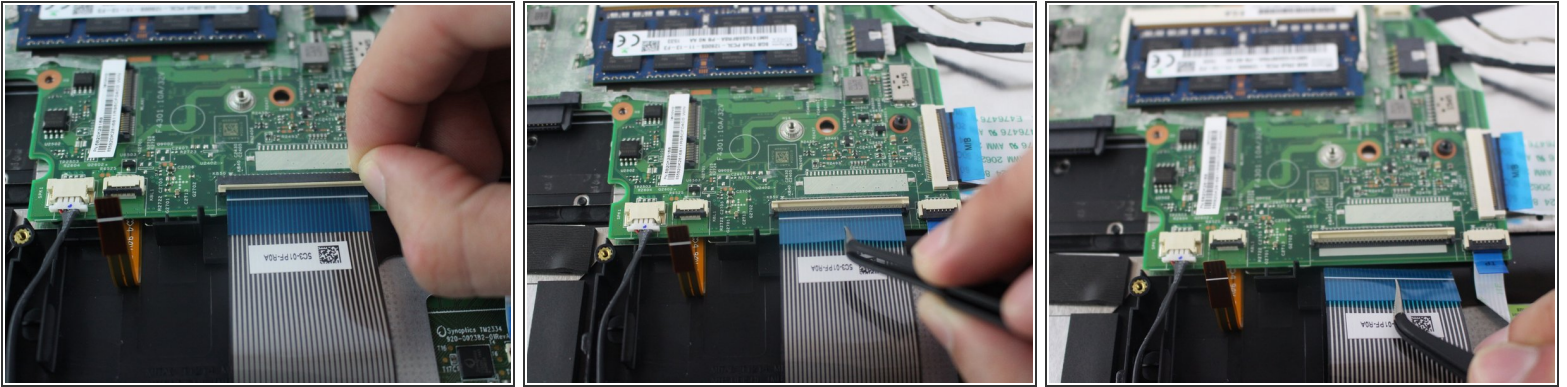
- Using the Phillips #0 screwdriver, remove the (2) two 5.4 mm Phillips screws.
- Disconnect these connectors from the motherboard.
- Disconnect the four ribbon cables from the motherboard.
- Unscrew and remove the (2) two Phillips #0 screws.

Step 16



- Lift up the black latch of the ribbon cable with the brown tab on top by holding the cable in to the motherboard.
- Grab the tab with a pair of pliers and pull out the cable.

Step 17



- Lift the beige latch of the ribbon cable with the blue tab by holding the cable in to the motherboard, and with a pair of tweezers, pull out the cable.

Step 18



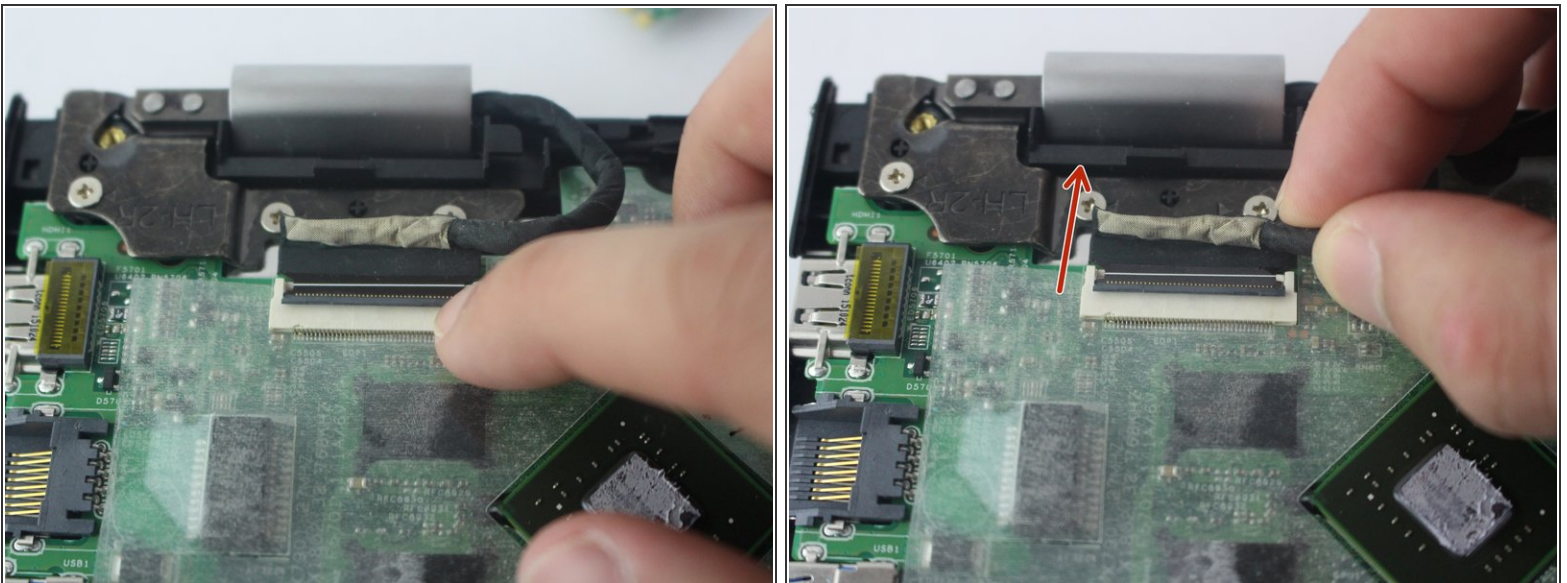
- Lift up the black latch of the ribbon cable with the blue tab at the lower right corner of the motherboard and disconnect it with a pair of tweezers.
- Grab the tab and pull out the cable.

Step 19



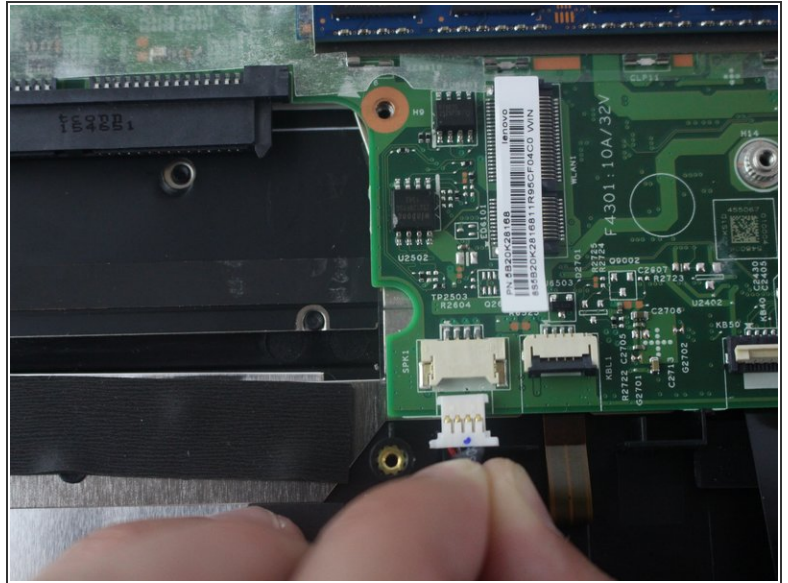
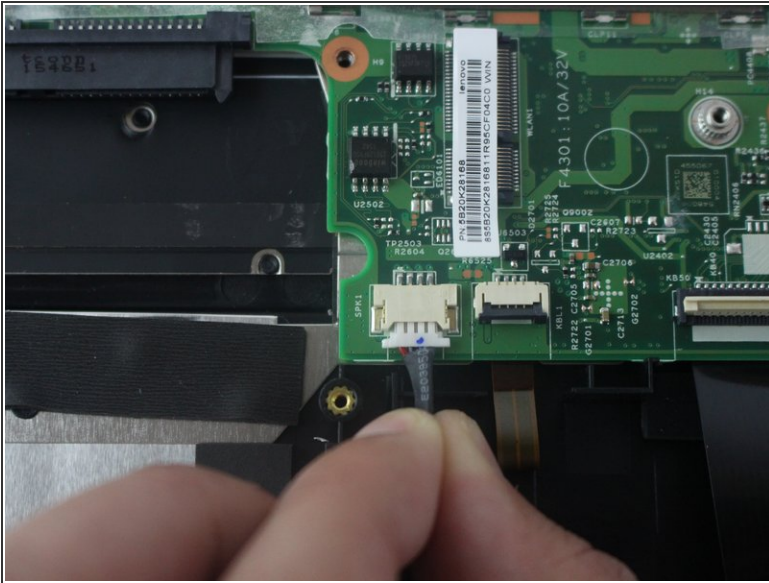
- Locate the last ribbon cable with a blue tab and lift the beige latch holding the cable in to the motherboard.
- With a pair of tweezers grab the tab and remove the cable.

Step 20



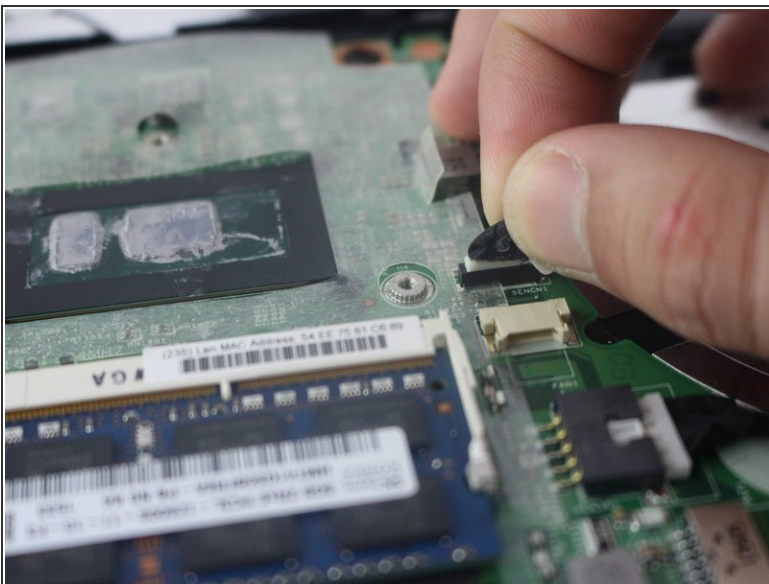
- Lift the black latch of the black connector at the top left corner of the motherboard by holding it in to the motherboard.
- Grab the cable and pull it outwards to remove it.

Step 21



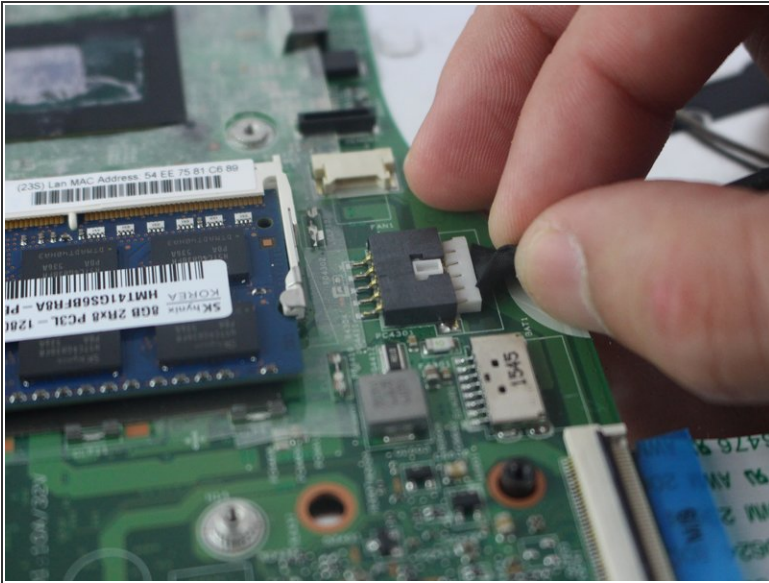
- Pull the wire besides the brown tab ribbon cable out and disconnect it.

Step 22



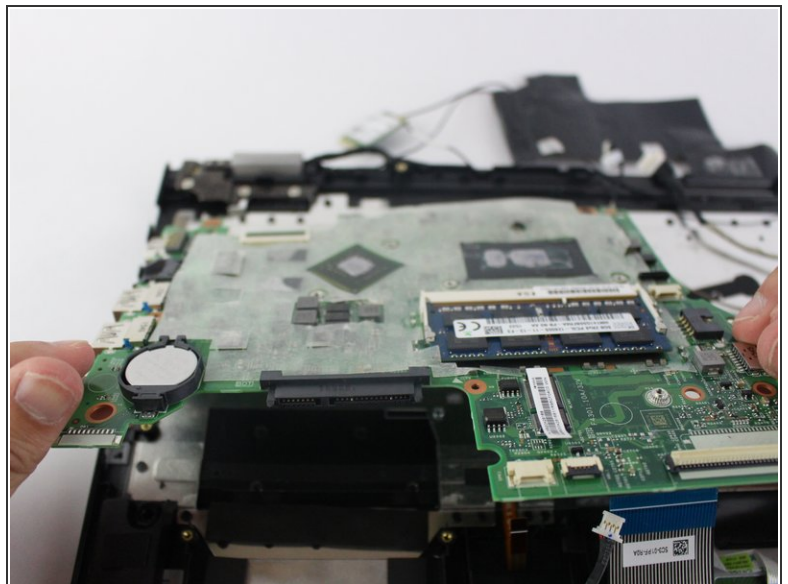
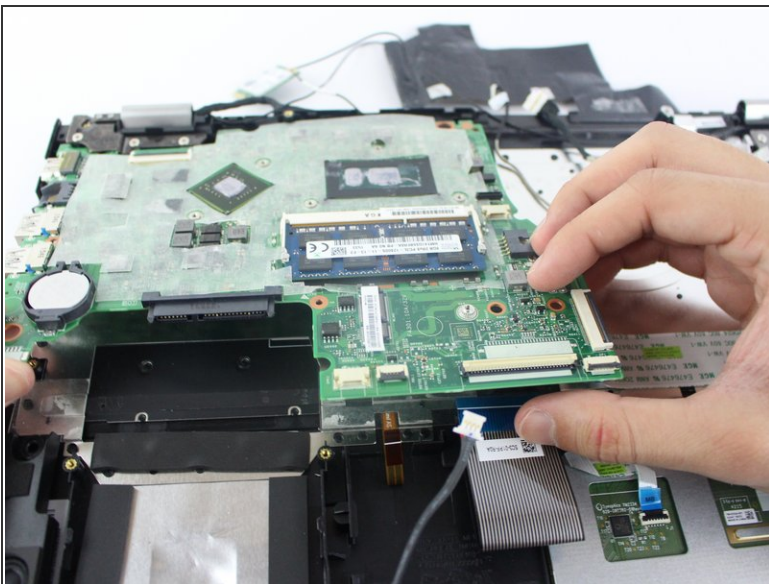
- Grab the small black connector by the RAM module and disconnect it from the motherboard.

Step 23



- Unplug the remaining connector besides the RAM module and remove it from the motherboard.

Step 24



- Gently grab the motherboard and pull it up lightly. Then pull it towards you and remove the motherboard.

To reassemble your device, follow these instructions in reverse order.