



Acer Aspire 4520-5464 WiFi Wireless Card Replacement

How to replace the WiFi Wireless Card of an Acer Aspire 4520-5464 laptop.

Written By: Byeloth Hermanson



INTRODUCTION

How to replace the WiFi Wireless Card of an Acer Aspire 4520-5464 laptop.



TOOLS:

- [Phillips #1 Screwdriver](#) (1)
-

Step 1 — Battery



- Shut down the computer and disconnect all external devices and cables.
- Flip the computer over.

Step 2



- Ensure that the battery compartment lock tab is in the unlocked position.
- Slide the sliding black tab away from the battery compartment.
- The inside edge of the battery should be released, causing it to slightly pop out of the compartment.

Step 3



- Grasp the inside edge of the battery and lift to fully detach the battery from the computer.

Step 4 — WiFi Wireless Card



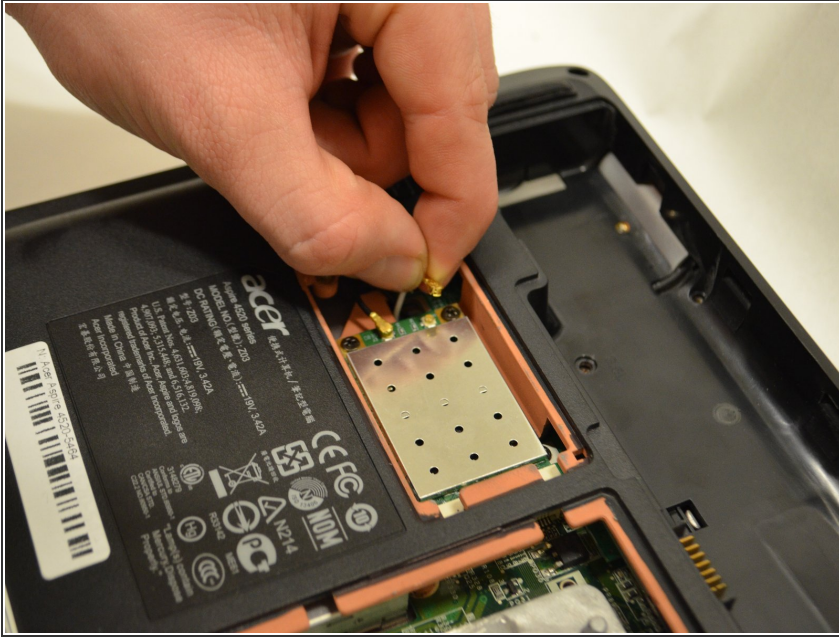
- Using the Phillips #1 screwdriver, remove the two 0.5mm screws from the smallest panel on the back of the computer.

☑ Set the screws aside.

- Lift up the panel using the indent located on the left side of the panel.

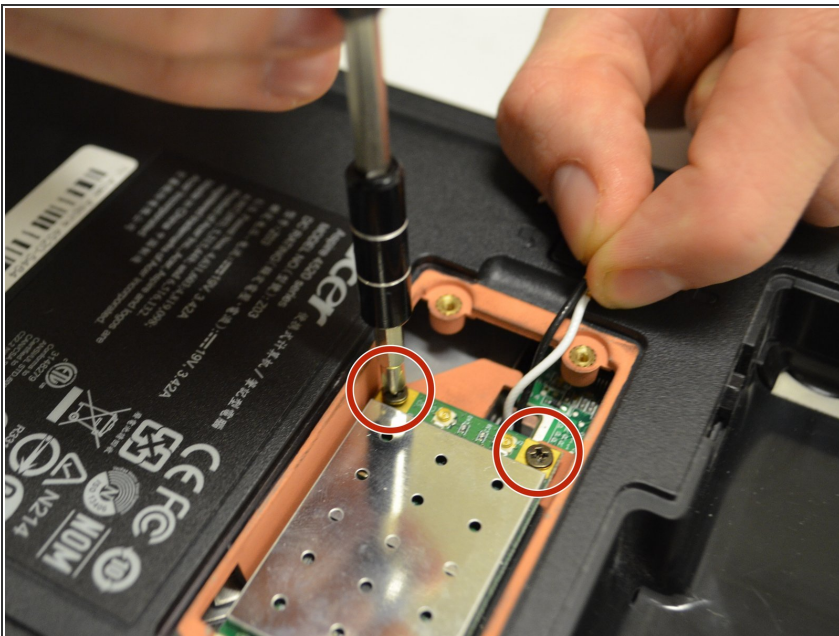
This document was generated on 2020-11-25 02:35:29 AM (MST).

Step 5



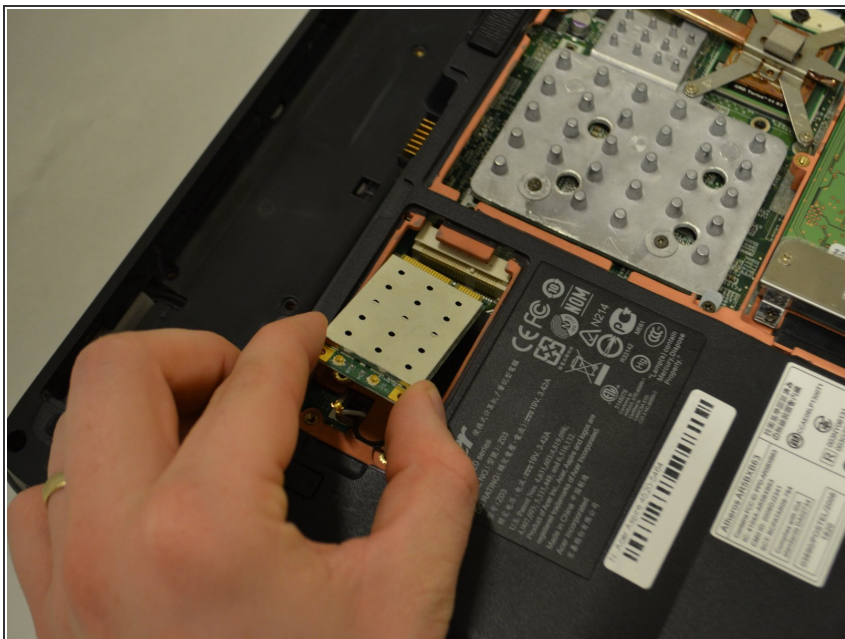
- Remove both the black and white wires by pinching the brass connectors and pulling up.

Step 6



- Remove the two 0.5mm Phillips #1 black screws located on the WiFi card.

Step 7



- Lift the WiFi card on the left side to remove it.

To reassemble your device, follow these instructions in reverse order with a new WiFi wireless card.